



# SUPPORTING NEWLY ARRIVED IMMIGRANTS AND FAMILIES

January 17, 2024

Ross Garmil, Supervisor of Education Programs  
Office of Bilingual Education and World Languages

[Ross.Garmil@nysed.gov](mailto:Ross.Garmil@nysed.gov)

<http://www.nysed.gov/bilingual-ed>



New York State  
EDUCATION DEPARTMENT  
Knowledge > Skill > Opportunity

# The Office of Bilingual Education and World Languages

**Our vision** is to provide leadership that embraces linguistically diverse learners to establish a Multilingual Society.

**Our mission** is to ensure that all New York State English Language Learners (ELLs) attain the highest level of academic success and that all Multilingual Learners (MLs) – which include ELLs, Former/Ever ELLs, World Languages students, and heritage speakers of World Languages – achieve the highest level of language proficiency in English and in one or more other languages.

**Priority One (1):**  
Standards and Instructional  
Support

**Priority Two (2):**  
Enforcement and Monitoring

**Priority Three (3):**  
Policy

**Priority Four (4):**  
Building Professional Capacity

# REGIONAL BILINGUAL EDUCATION RESOURCE NETWORKS

## NYS RBERN REGIONS

 CAPITAL DISTRICT 

 HUDSON VALLEY 

 LONG ISLAND 

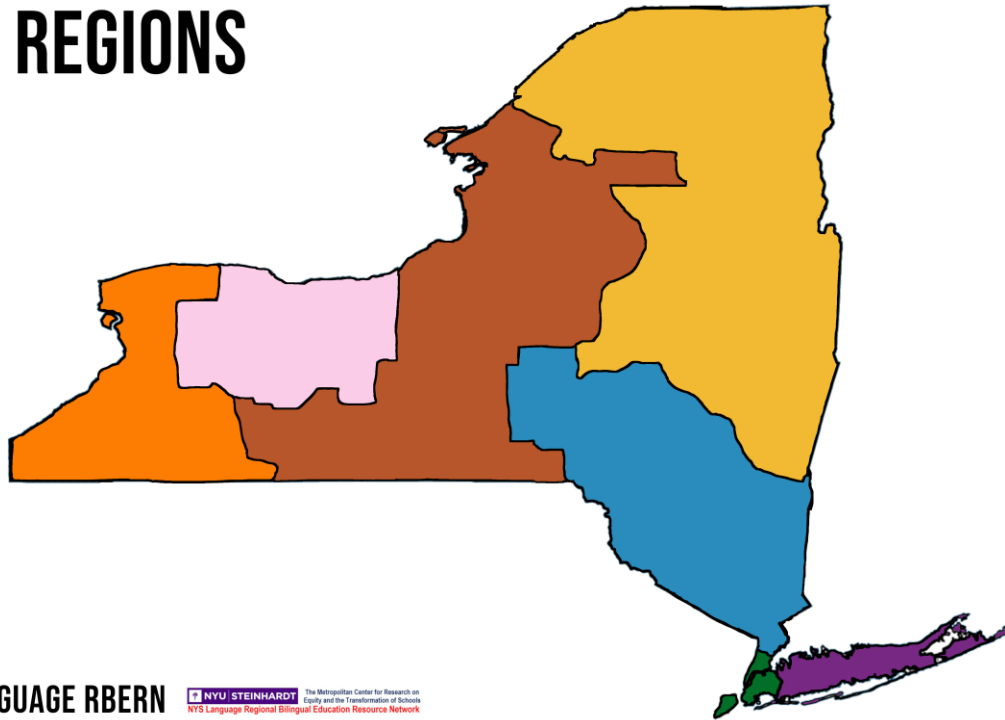
 MID-STATE 

 MIDWEST 

 NYC 

 WEST 

 ALL COLORS: STATEWIDE LANGUAGE RBERN  The Metropolitan Center for Research on Equity and the Transformation of Schools  
NYS Language Regional Bilingual Education Resource Network



- [Language RBERN \(Statewide\)](#)
- [Capital District RBERN](#)
- [Hudson Valley RBERN](#)
- [Long Island RBERN](#)
- [Mid-State RBERN](#)
- [Mid-West RBERN](#)
- [New York City RBERN](#)
- [West Region RBERN](#)



# REGIONAL BILINGUAL EDUCATION RESOURCE NETWORKS



## Supporting Newly Arrived Immigrant Students & Families (2-Part Series)

**Natasha Quiroga, Esq.**

**Natasha Quiroga (she/her/ella)** has spent 20 years advocating for the most vulnerable children, youth, and families as a lawyer, fundraiser, and executive director. She is the [Director of Education Policy and InsideSchools at the New School's Center for New York City Affairs](#) where she recently launched a project to help newly arrived migrant families navigate the NYC public school system. Natasha is also a consultant with [Immigrant Connections](#) and [English Learners Portal](#). She develops and teaches online courses on the legal journey facing immigrant children and youth and provides monthly immigration policy updates for educators, school administrators, and school staff.

### AUDIENCE

Administrators, Counselors, Parent Coordinators, ALL Teachers, CBO Members

Part 1: MONDAY / JANUARY 22, 2024 / 3PM-6PM

Part 2: MONDAY / FEBRUARY 5, 2024 / 3PM-5PM

- Explore the current situation facing newly arrived immigrant families to NYC/NYS
- Gain knowledge about the backgrounds of the families and their journeys to the U.S. and New York
- Develop strategies and explore resources for supporting immigrant students and families as they move through the immigration processGain an understanding about newly arrived students' previous educational experiences
- Learn how schools can prepare for and engage newly arrived immigrant families living in temporary housing to navigate the U.S. education system
- Explore best practices of how schools and community-based organizations can collaborate to support newly arrived immigrant families living in temporary housing



# REGIONAL BILINGUAL EDUCATION RESOURCE NETWORKS

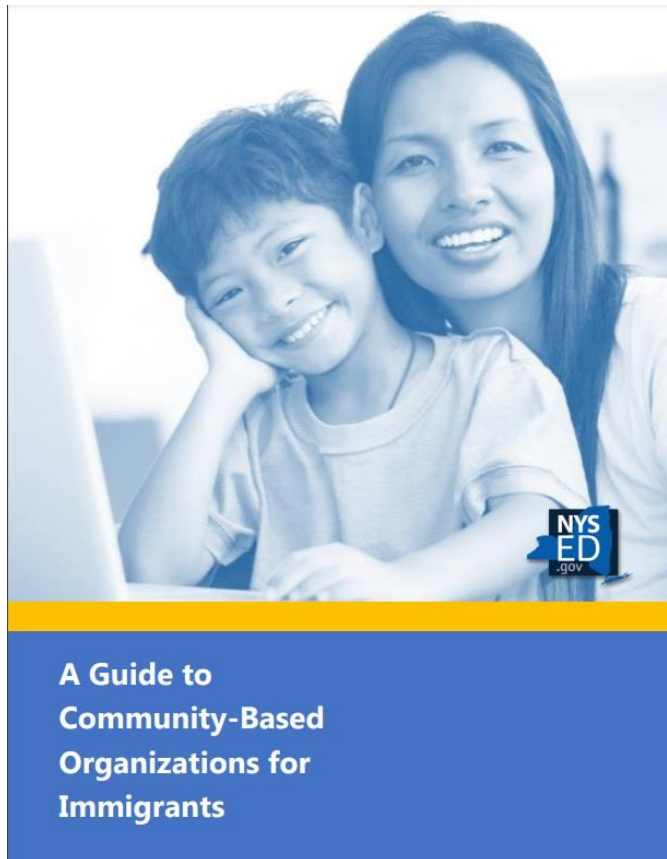
## PARENT RESOURCES





# REGIONAL BILINGUAL EDUCATION RESOURCE NETWORKS

## COMMUNITY-BASED ORGANIZATION GUIDES



- Advocacy and Community Engagement
- Health Care and Insurance
- Housing
- Labor and Employment
- Legal Services and Lawful Status
- Public Assistance
- Safety
- Youth and Education




# ASYLUM SEEKERS AND NEWCOMERS

## 2023-2024 INITIATIVES



- ELL Identification and Placement Flexibility
  - For districts with large numbers of newcomers in crisis
  - Extends deadline to 30 days
- Supplementary Teacher Certification Flexibility for ESOL and BE
  - Enables teachers to earn supplementary certification with content area tests alone
  - ESOL, Bilingual Extension, and content area certification for current ESOL teachers
- Title III Supplementary Awards
  - Awarded to LEAs with high numbers of newly arrived immigrant students in crisis
  - 65 districts and charter schools


# ASYLUM SEEKERS AND NEWCOMERS



**Civil Rights for  
Newcomers and Immigrants**

Office of Bilingual Education and World Languages  
<http://www.nysed.gov/bilingual-ed>

  New York State  
EDUCATION DEPARTMENT  
Knowledge & Skill & Opportunity

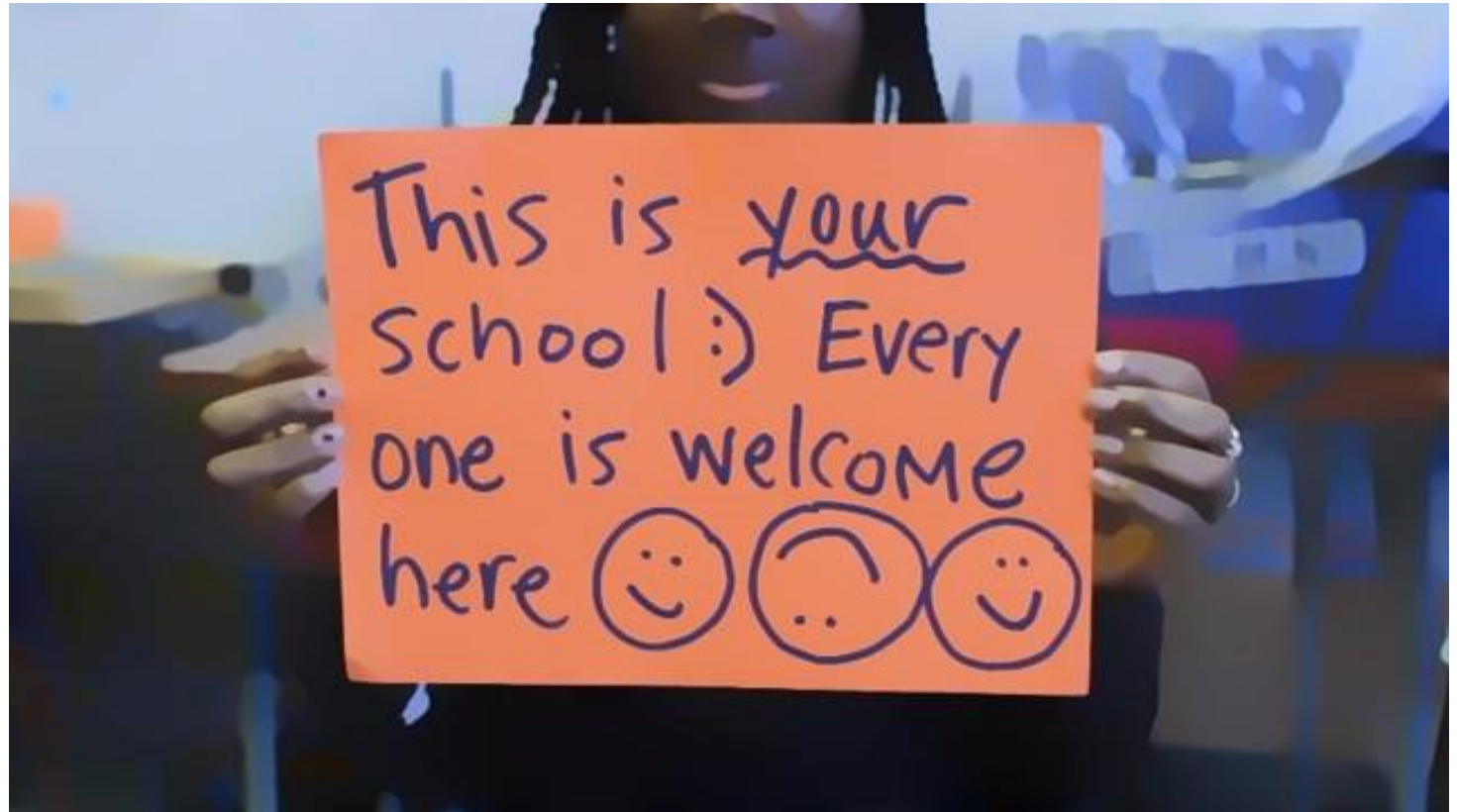
 Office of Bilingual Education and World Languages  
89 Washington Avenue, EB 301  
Albany, NY 12234

[Civil Rights for Newcomers and Immigrants](#)





# ASYLUM SEEKERS AND NEWCOMERS



[Supporting Immigrants in Schools Video Series](#)



# Thank you!

