

State Performance Plan Indicator 8: Parent Involvement



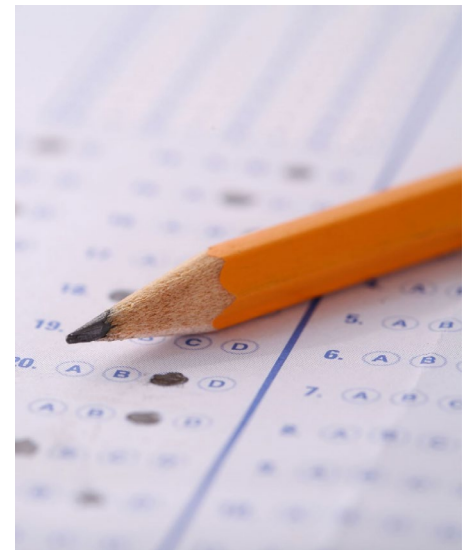
Percent of parents with a child receiving special education services who report that schools facilitated parent involvement as a means of improving services and results for children with disabilities.



The New York State Education Department (NYSED) values your involvement in the Individualized Education Program (IEP) meetings and other school activities/events relating to your child's education and would like to hear about your experience with your school district's efforts to partner with you.

NYSED is working with the Potsdam Institute for Applied Research (PIAR), an independent research firm located at the State University of New York (SUNY) at Potsdam, to collect the information. Each year, one sixth of the districts in the State plus the New York City Public Schools are required to collect and submit data. The school district provides a 25-question survey to the families of students with disabilities. Your answers to the survey are very important to NYSED. They will help identify how well school districts across the state work with parents in order to improve services and results for students with disabilities.

- The survey is multiple choice and takes 15 minutes to complete.
- You have the opportunity to complete one (1) survey per child receiving special education and related services.
- The survey is available either online or from your child's public school in a paper copy to be submitted using the provided postage-paid envelope.
- No one from your school district will see how you answered the questions.
- PIAR will compile the results of the surveys from all the parents who respond from your school.
- Your school district's results are posted on the public [NYSED Data website](#).



Questions and Answers

Why participate in the Parent Involvement Survey?

You are an important member of the committee on special education. By completing the survey, you can tell us how your child's school partners with you.

How is the data from the survey used by NYSED?

The results in this survey will help us plan improvements in our special education system and enrich school and parent partnerships to increase outcomes for students with disabilities.

Are my responses kept confidential?

Yes. Individual responses are reported anonymously and are not connected to you or your child.

Am I required to do the survey?

No. Participation is voluntary. We appreciate your time to complete the survey as the information that is gathered provides feedback for the Department to enhance parent involvement.

Do I have to answer all the questions on the survey?

At least 15 of the 25 questions must be answered for your survey to be counted.

Can I take both the online and paper survey?

No. To ensure accurate data, please select one (1) method, online or paper.

I have a paper survey and have more than one child receiving special education, should I make a copy?

No. Please ask your child's school for another copy of the paper survey for your other child. Surveys are individually coded for data purposes but are not linked to a specific student.

What do I do if I need the Parent Involvement Survey in a different language or mode?

The surveys are printed in English and Spanish, and made available on paper in Russian, Simplified Chinese, Haitian Creole, Bengali, Arabic, Korean, Yiddish, and Urdu. NYSED requires the school districts to provide translations to ensure that parents who do not read or understand one of these languages have an opportunity to participate in the survey.

Whom do I contact with questions on how to complete the survey?

You may contact PIAR at SUNY Potsdam directly at 888-419-2698 (toll free) or 315-267-3466 or send an e-mail to parentsurvey@potsdam.edu (link sends e-mail) or the NYSED Office of Special Education Policy Unit at 518-473-2878 or speced@nysed.gov.