

## The International Big Picture Learning Credential

A passport to the world



Big Picture  
EDUCATION AUSTRALIA

Big Picture  
LEARNING AUSTRALIA

THE UNIVERSITY OF  
MELBOURNE

Guide for Parents

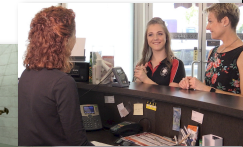
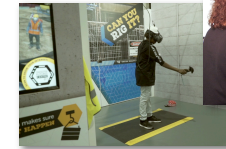


## Who is the IBPLC for?

The **International Big Picture Learning Credential** is awarded to Big Picture students at the end of Year 12. It uses NEW measures of success to recognise the varied capacities, qualities and achievements of your children when they graduate.

It is for ALL students on pathways to:

- Employment
- Training college
- Apprenticeship
- University



2

## How is the IBPLC different?

The IBPLC is a non-ATAR credential, that uses evidence of student work to support judgements about your child's achievements.

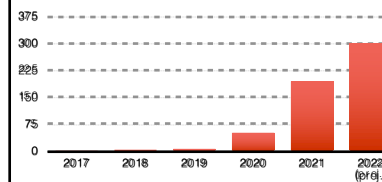
It uses assessment processes that are:

- 100% anchored in the Big Picture design
- clearly linked to the Learning Goals
- about what students *know*, *can do*, *make*, *say* and *write*
- based on student work (rather than on one-size fits all exams)
- based on the judgements of teachers who know students well



3

## IBPLC GRADUATES IN AUSTRALIA



## OF 2021 IBPLC GRADUATES...

**100%** who applied to university received offers

**83%** said their destination after school was linked to their interest

## IBPLC INTERNATIONAL 2022

**44** schools

**800** students

• USA  
• Australia  
• Kenya  
• Barbados  
in a

## Fast Facts:

- Developed by BPEA within Big Picture schools
- Accepted by 14+ partner universities around Australia
- Warranted by the Assessment Research Centre at the University of Melbourne



## The Big Picture Design for Learning

### passion

Each student has a personalised learning plan endorsed by their family and designed around their interests and passions, with links to the curriculum.



Students take courses and work on a variety of projects in areas of personal interest that they design and manage.



Students learn in small groups of 17 known as an 'advisory' where there is a culture of belonging, support and respect.



They also complete practical projects while on internship with an expert mentor in the community, to gain experience in a field of interest.



Students collect evidence of their learning in a portfolio and regularly present their work at a public exhibition to teachers, mentors, peers and family. This is the basis of their assessment throughout school.



The International Big Picture Learning Credential is an education passport awarded to all senior students on pathways to employment, training and university.

## The 6 Learning Goals

### KNOWING HOW TO LEARN

The goal is to be curious, with a drive to explore and be open to doing hard work; to understand that there are many ways of learning, knowing and making meaning in the world. It includes valuing learning from and with others inside and outside of school.

### QUANTITATIVE REASONING

The goal is to learn to use the skills, concepts and logic of mathematics to understand and interpret situations, solve problems and take action in life, learning and work.

### COMMUNICATION

The goal is to learn to be a great communicator: to understand your audience; to write, read, speak and listen well; to use technology and artistic expression (visual arts, music, dance and theatre) to communicate. It includes, where possible, another language.

### PERSONAL QUALITIES

The goal is to strive to be the best person you can be; to demonstrate respect and empathy for others; take responsibility be self-aware and act with courage and compassion; to reflect on your achievements and progress; to strive for personal and civic improvement.

### EMPIRICAL REASONING

The goal is to learn through experimentation; to use evidence based on observation, experience and a logical process to understand, make decisions and to evaluate hypotheses.

### SOCIAL REASONING

The goal is to learn to see diverse perspectives; to understand social issues; to explore ethics; to analyse and understand social systems and to look at issues historically and culturally. It includes learning to take responsible action to address inequality.

## In Years 11 & 12 students work on...

1. Senior Project / Thesis



2. Out-Learning Summary



3. Autobiography



4. Post-School Plan

5. Social Action Project

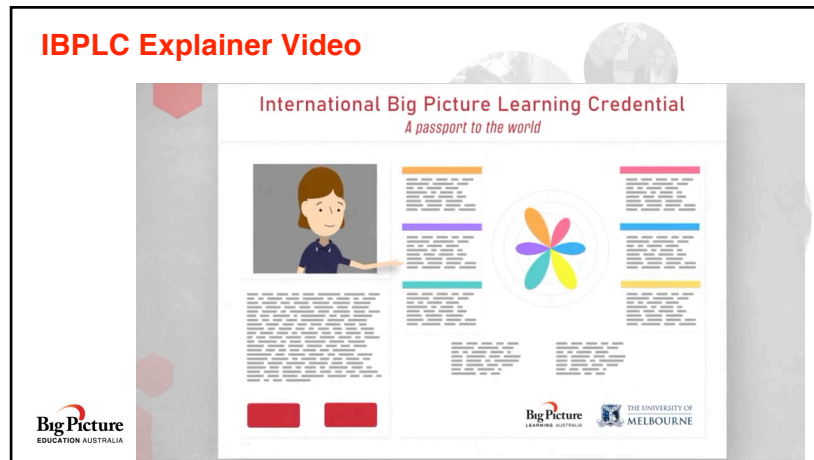
6. Series of Learning Plans

7. Evidence from Exhibitions

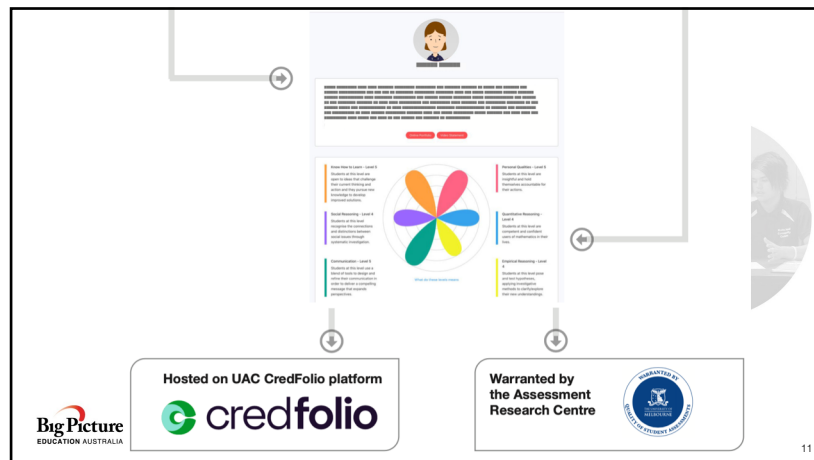
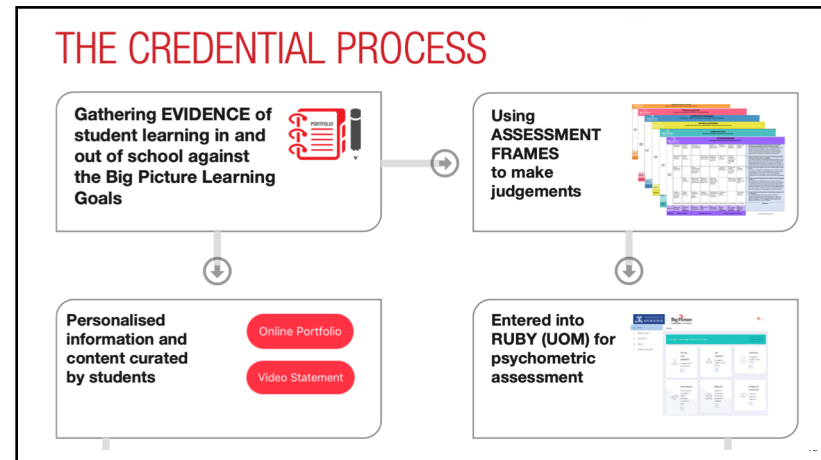
8. Other certificates, courses or work



## IBPLC Explainer Video

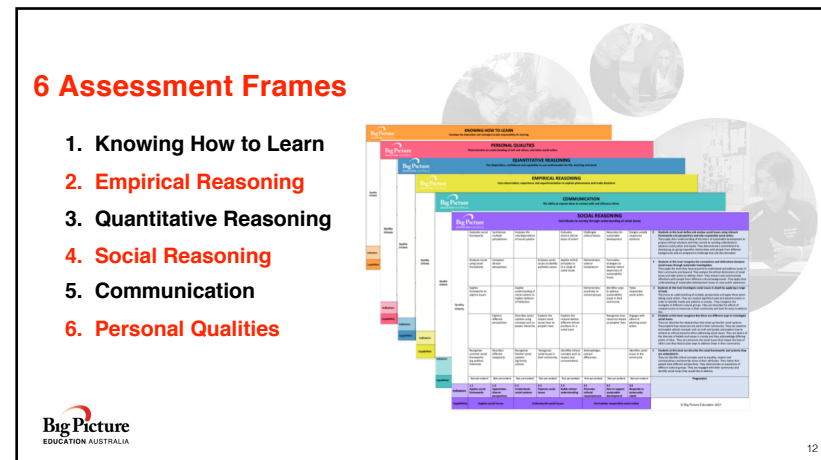


## THE CREDENTIAL PROCESS



## 6 Assessment Frames


1. Knowing How to Learn
2. Empirical Reasoning
3. Quantitative Reasoning
4. Social Reasoning
5. Communication
6. Personal Qualities



**Emma's Learner Profile**

## International Big Picture Learning Credential


*A passport to the world*



**Emma Black**

Emma is a Yoga enthusiast and qualified instructor currently based in the northern suburbs of Wollongong. Living on the coast has fostered a passion and love for the ocean and surfing, which she has recently combined with her Yoga teaching to encourage the wider community to adopt positive physical, mental and spiritual approaches to life. Emma has her own Yoga business - FreeOM Yoga which has allowed her to turn her passion into a career and she regularly helps support others through her Yoga classes and retreats. She loves educating the local community on the benefits of Yoga and mindful living. Emma is well known for her mindful and balanced life as well as her enthusiasm and desire to advocate for Environmental and Animal Conservation. Through her yoga classes and retreats, not only does Emma encourage her students to take after themselves but to extend the practice of mindful living into all areas of their life in order to help conserve the natural environment.

**Video statement**



**What do these levels mean?**

**Students at this level are highly motivated and strategic about their learning.**

**Students at this level recognise the connections and distinctions between social issues through systematic investigation.**

**Students at this level use a blend of tools to design and refine their communication in order to deliver a compelling message that respects perspectives.**

**Students at this level are insightful and hold themselves accountable for their actions.**

**Students at this level are competent and confident users of mathematics in their lives.**

**Students at this level systematically refine hypotheses to develop authentic knowledge from their investigations.**

**Achievements:**

- Founder of FreeOM Yoga
- Completion of 500 hr Diploma of Yoga
- Completion of University of Wollongong Masters with High Distinction
- Completion of University of Wollongong Chemistry Bridging Course
- Playing Violin for the Sinfonia Symphonic Orchestra

**Real World Experiences:**

- Kiama Health Temple
- On Point Fitness Studio
- KinKao Yoga

**Big Picture EDUCATION AUSTRALIA**

**THE UNIVERSITY OF MELBOURNE**

17

## The Benefits of Personalised Assessment:

Puts the 'person' back into educational assessment

Students have choice in how they are represented

Offers meaningful insights to employers, TAFE and universities

Students are not reduced to a single numerical score



## Response of Stakeholders to the IBPLC

Offers meaningful, accessible information to end-users in the wider community



*The promise of this credential on university panels is the opportunity to replace the need for the interview. The Learner Profile, many say, speaks for itself.*

Professor John Fischetti, Pro-Vice Chancellor  
The University of Newcastle

**Big Picture EDUCATION AUSTRALIA**



**The new credential...**

**New measures of success for your child**

