

Malverne Senior High School: Successful Schools (Student Report)



Building People and Organizations

New York: PO Box 130 Pittsford, New York 14534 // **Florida:** PO Box 720 Naples, Florida 34102

(585) 264-0886 www.plcassociates.com

Report Key



Building People and Organizations

1. Shaded areas indicate totals of SA/A and VI/I as follows: Green-75% or greater. Yellow- 50%-74. Red- less than 50%.
2. SA=Strongly Agree, A=Agree, S=Somewhat, D=Disagree, SD= Strongly Disagree, NA=No Answer.
3. VI=Very Important, I=Important, SI=Somewhat Important, MI=Minimally Important, NI=Not Important, NA=No Answer.
4. The Scaled Score (SS) is an average of the point values assigned to each response: SA/VI=5, A/I=4, S/SI=3, D/MI=2, SD/NI=1. NA answers have no weight. Res is # responses for those who answered the question.
5. Commentary is unedited with exception of data redacted by the organization. (Provided in a separate report.)
6. Men of Color (MOC) for this program evaluation include: Black/African American, Hispanic/Latino and American Indian/Alaska Native.

Check In

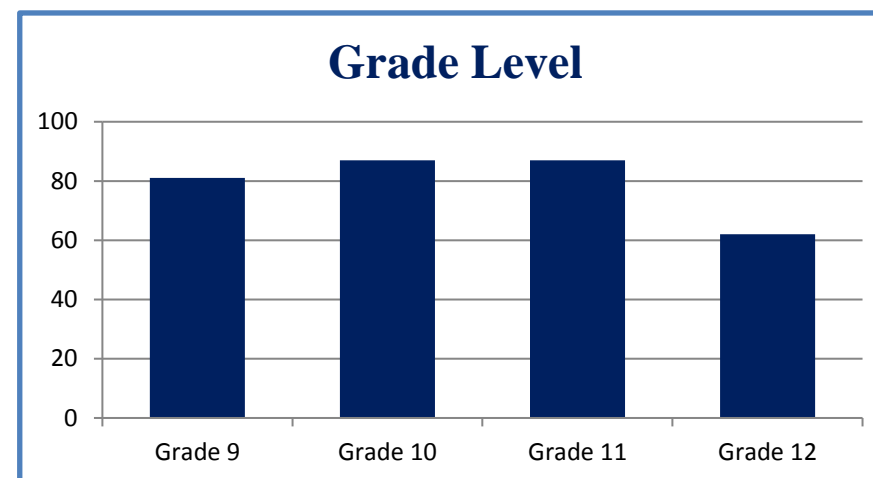
Reponse Rates

All Students: 317/539 **59%**

MOC: 104/226 **46%**

Grade Level

Grade 9 81
Grade 10 87
Grade 11 87
Grade 12 62

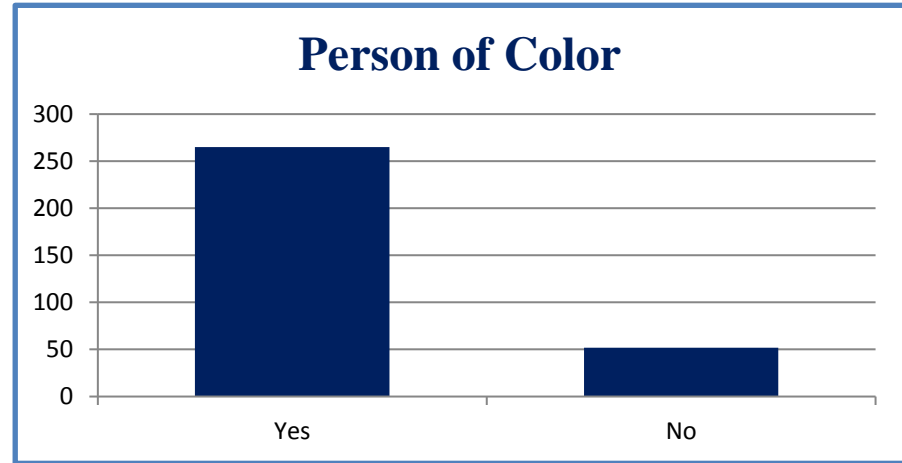


Check In

Person of Color

Yes 265

No 52



Ethnicity

Black/African American 130

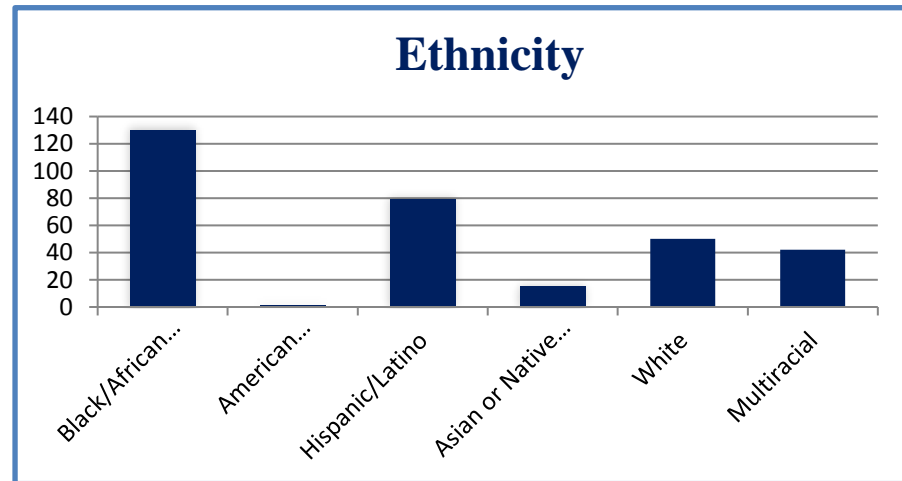
American Indian/Alaska Native 1

Hispanic/Latino 79

Asian or Native Hawaiian/Other Pacific Islander 15

White 50

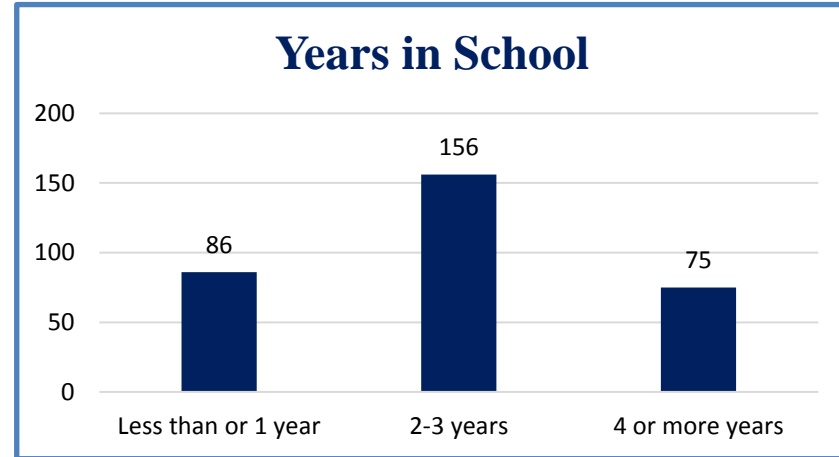
Multiracial 42



Check In

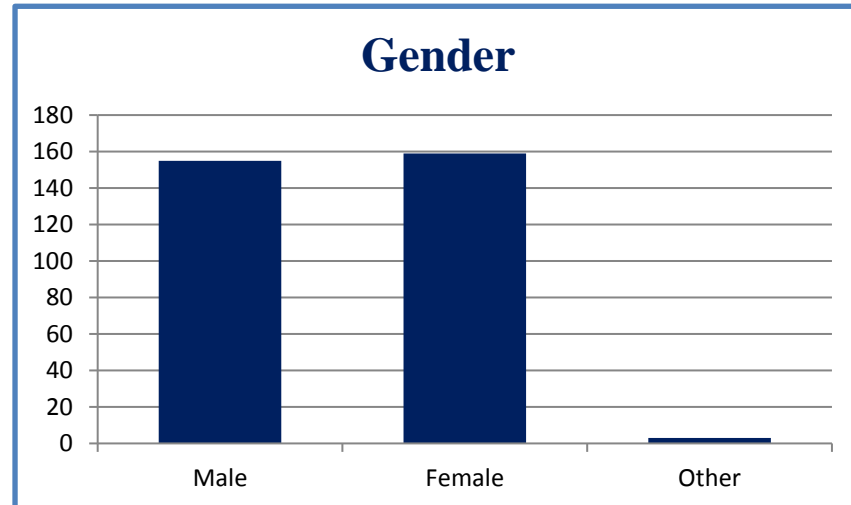
Years in School

Less than or 1 year 86
2-3 years 156
4 or more years 75



Gender

Male 155
Female 159
Other 3



Successful Schools

All - My experience in this school:	SA/A	SA	A	S	D	SD	SS	Res	NA
1. This school is specifically set up to meet my needs.	58.4%	15.2%	43.2%	33.5%	4.5%	3.5%	3.62	310	7
2. My academics/skills/learning has improved.	75.0%	29.5%	45.5%	20.5%	1.3%	3.2%	3.97	312	2
3. My self-image (how I present myself to others) has improved.	65.6%	28.2%	37.3%	26.0%	4.2%	4.2%	3.81	308	8
4. I am gaining the determination and perseverance needed to be successful.	67.2%	26.6%	40.6%	23.1%	6.2%	3.6%	3.81	308	6
5. I have increased pride in my background/heritage/culture.	62.8%	30.4%	32.4%	24.2%	8.5%	4.4%	3.76	293	24
6. My confidence and self-esteem (feelings about myself) has increased significantly.	53.5%	22.8%	30.7%	32.3%	8.6%	5.6%	3.56	303	13
7. I am ready for what comes after high school – college and career.	53.2%	26.1%	27.1%	34.1%	8.0%	4.8%	3.62	314	1
8. I am on “the right path” - not engaging in risky behaviors (drugs, alcohol, violence...).	83.2%	60.5%	22.7%	12.0%	2.9%	1.9%	4.37	309	8
9. My teachers care consistently about me doing my best.	68.7%	33.2%	35.5%	23.5%	4.8%	2.9%	3.91	310	5
10. My teachers make learning interesting and fun.	42.4%	17.5%	24.8%	40.4%	9.6%	7.6%	3.35	314	2
11. My teachers encourage students to fully participate in class, giving time to share ideas, explain answers, and ask questions.	65.4%	29.4%	35.9%	27.2%	4.5%	2.9%	3.84	309	6
12. Our classes stay focused; we do not waste time and work well together - students and teachers.	38.2%	6.5%	31.7%	42.7%	12.9%	6.1%	3.19	309	8
13. When I don't understand something, my teachers re-explain things in a way that I am not embarrassed.	59.5%	22.7%	36.8%	28.9%	7.6%	3.9%	3.67	304	12
14. My teachers encourage us to use our "thinking skills" as they challenge us to persevere (keep trying) in our learning.	73.2%	28.7%	44.5%	20.0%	3.5%	3.2%	3.92	310	6
15. My teachers summarize what we learn everyday and help us to connect ideas.	50.3%	19.7%	30.6%	37.4%	7.4%	4.8%	3.53	310	7

Successful Schools



Successful Schools

Men of Color (MOC) - My experience in this school:	SA/A	SA	A	S	D	SD	SS	Res	NA
1. This school is specifically set up to meet my needs.	59.2%	12.6%	46.6%	32.0%	3.9%	4.9%	3.58	103	1
2. My academics/skills/learning has improved.	71.6%	25.5%	46.1%	23.5%	2.0%	2.9%	3.89	102	0
3. My self-image (how I present myself to others) has improved.	69.6%	30.4%	39.2%	23.5%	3.9%	2.9%	3.90	102	1
4. I am gaining the determination and perseverance needed to be successful.	63.1%	21.4%	41.7%	23.3%	7.8%	5.8%	3.65	103	0
5. I have increased pride in my background/heritage/culture.	63.0%	31.0%	32.0%	24.0%	8.0%	5.0%	3.76	100	4
6. My confidence and self-esteem (feelings about myself) has increased significantly.	64.7%	25.5%	39.2%	23.5%	8.8%	2.9%	3.75	102	2
7. I am ready for what comes after high school – college and career.	51.0%	21.2%	29.8%	33.7%	9.6%	5.8%	3.51	104	0
8. I am on “the right path” - not engaging in risky behaviors (drugs, alcohol, violence...).	82.2%	55.4%	26.7%	8.9%	5.0%	4.0%	4.25	101	3
9. My teachers care consistently about me doing my best.	63.1%	27.2%	35.9%	28.2%	2.9%	5.8%	3.76	103	1
10. My teachers make learning interesting and fun.	37.5%	10.6%	26.9%	41.3%	12.5%	8.7%	3.18	104	0
11. My teachers encourage students to fully participate in class, giving time to share ideas, explain answers, and ask questions.	66.3%	21.8%	44.6%	22.8%	5.9%	5.0%	3.72	101	1
12. Our classes stay focused; we do not waste time and work well together - students and teachers.	37.6%	5.0%	32.7%	44.6%	8.9%	8.9%	3.16	101	3
13. When I don't understand something, my teachers re-explain things in a way that I am not embarrassed.	63.4%	14.9%	48.5%	25.7%	6.9%	4.0%	3.63	101	3
14. My teachers encourage us to use our "thinking skills" as they challenge us to persevere (keep trying) in our learning.	73.3%	22.8%	50.5%	15.8%	5.0%	5.9%	3.79	101	3
15. My teachers summarize what we learn everyday and help us to connect ideas.	53.4%	14.6%	38.8%	35.9%	4.9%	5.8%	3.51	103	1

Successful Schools

All - Factors most important for my success/coming to school:	VI/I	VI	I	SI	MI	NI	SS	Res	NA
1. The way teachers teach and are available when I need help.	88.2%	54.7%	33.4%	7.4%	1.7%	2.7%	4.36	296	8
2. Being surrounded by students who have similar thinking and want to be successful.	77.1%	39.7%	37.4%	14.8%	3.4%	4.7%	4.04	297	7
3. The curriculum and its relevance to me and my future plans - college and career.	82.2%	51.2%	31.0%	12.8%	0.7%	4.4%	4.24	297	5
4. Safe place where people really care about me.	74.2%	45.4%	28.8%	18.0%	3.1%	4.7%	4.07	295	9
5. Opportunities to participate in athletics, sports, extra-curricular activities, after school and community events.	79.5%	51.7%	27.9%	13.8%	3.4%	3.4%	4.21	298	7
6. The positive and encouraging environment of the school with adult role models.	80.7%	40.5%	40.2%	13.2%	3.4%	2.7%	4.13	296	7
7. My family supporting me and saying education is important.	81.9%	52.5%	29.4%	11.7%	2.3%	4.0%	4.24	299	6
8. Opportunities to participate in decisions about the school, where staff "listens to us."	76.0%	46.2%	29.8%	17.5%	3.4%	3.1%	4.13	292	10
9. Opportunities for Advanced Placement (AP)/College Credit Courses, IB.	80.8%	51.4%	29.5%	11.6%	3.1%	4.5%	4.20	292	11
10. Having mentors and "people to go to" when I have problems to work through.	78.4%	46.3%	32.1%	14.9%	2.4%	4.4%	4.14	296	9

Successful Schools

Men of Color (MOC) - Factors most important for my success/coming to school:	VI/I	VI	I	SI	MI	NI	SS	Res	NA
1. The way teachers teach and are available when I need help.	84.5%	49.5%	35.1%	10.3%	1.0%	4.1%	4.25	97	1
2. Being surrounded by students who have similar thinking and want to be successful.	76.0%	37.5%	38.5%	12.5%	4.2%	7.3%	3.95	96	2
3. The curriculum and its relevance to me and my future plans - college and career.	78.9%	43.2%	35.8%	11.6%	1.1%	8.4%	4.04	95	1
4. Safe place where people really care about me.	78.1%	41.7%	36.5%	14.6%	3.1%	4.2%	4.08	96	2
5. Opportunities to participate in athletics, sports, extra-curricular activities, after school and community events.	75.5%	49.0%	26.5%	13.3%	4.1%	7.1%	4.06	98	1
6. The positive and encouraging environment of the school with adult role models.	76.3%	28.9%	47.4%	15.5%	4.1%	4.1%	3.93	97	1
7. My family supporting me and saying education is important.	78.6%	40.8%	37.8%	12.2%	3.1%	6.1%	4.04	98	1
8. Opportunities to participate in decisions about the school, where staff "listens to us."	68.8%	35.4%	33.3%	20.8%	5.2%	5.2%	3.89	96	2
9. Opportunities for Advanced Placement (AP)/College Credit Courses, IB.	75.3%	44.1%	31.2%	11.8%	5.4%	7.5%	3.99	93	5
10. Having mentors and "people to go to" when I have problems to work through.	74.7%	37.9%	36.8%	13.7%	4.2%	7.4%	3.94	95	4

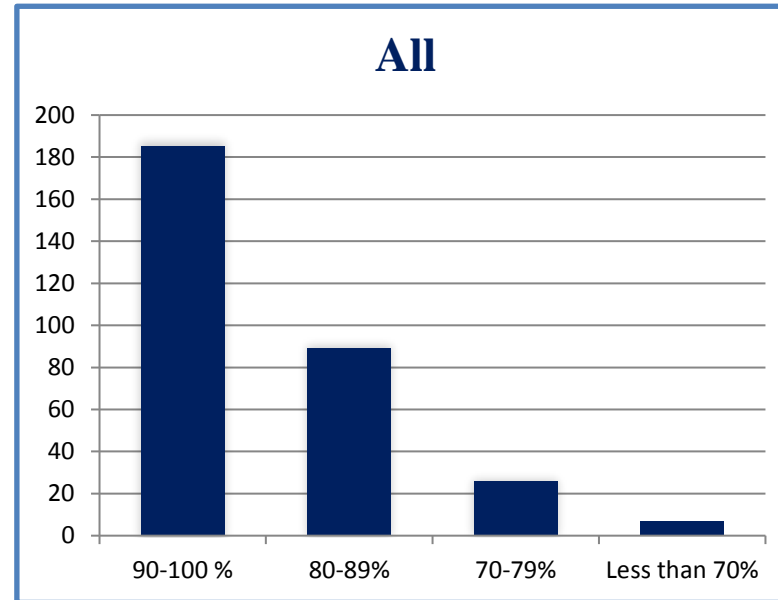
Successful Schools

How sure are you (give us a percentage) that you will graduate from high school and be successfully prepared for College and/or Career?

90-100 %	185
80-89%	89
70-79%	26
Less than 70%	7

Response Rates (# above divided by 307)

185	60%
89	29%
26	8%
7	2%



Successful Schools

How sure are you (give us a percentage) that you will graduate from high school and be successfully prepared for College and/or Career?

90-100 %	51
80-89%	33
70-79%	15
Less than 70%	1

Response Rates (# above divided by 100)

51	51%
33	33%
15	15%
1	1%

