



# New York State PORTRAIT OF A GRADUATE

## Student

### NEED-TO-KNOW

The New York State Portrait of a Graduate outlines the skills and qualities you will build to succeed in life after high school. The Portrait supports your ability to thrive in college, careers, and as an engaged citizen in today's world.



### *Growing as a Learner*

The Portrait supports your growth in every way. You will grow academically, socially, emotionally, and culturally. Growth in all of these areas will better prepare you for college, careers, and life as an engaged citizen. The Portrait supports your success beyond high school graduation.

### *Centered on You!*

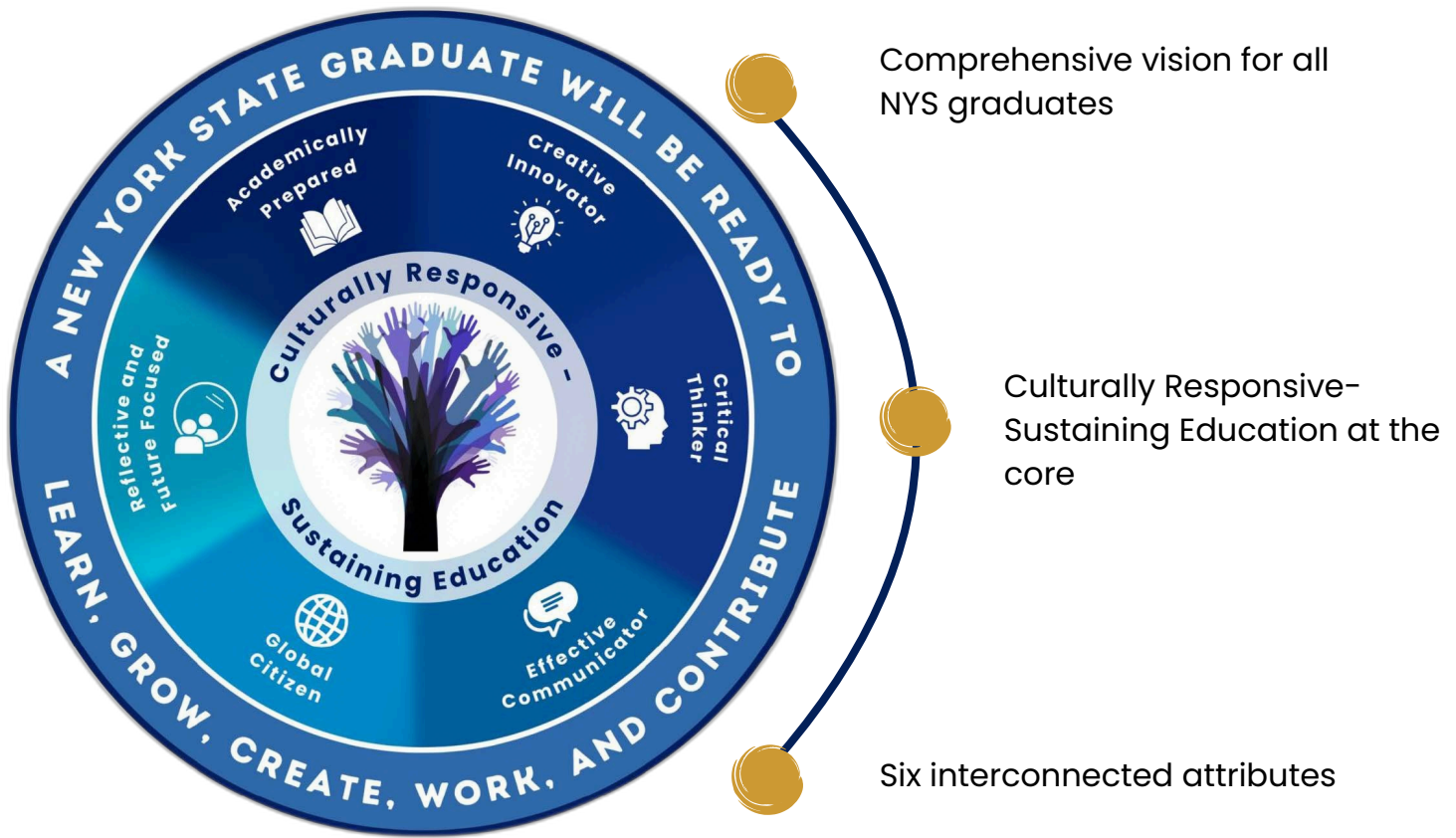
You are the core of the Portrait. Educators and leaders will work to make you feel seen, heard, and valued at school. Educational communities will strive to create a learning environment where you can thrive. Your voice matters – the Portrait will help you create the future you desire.

### *Authentic Application*

Portrait skills – such as communication, collaboration, and critical thinking – will be embedded into real-world projects, interdisciplinary units, and work based learning. You will be encouraged to apply these skills in ways that reflect your experiences and aspirations.

## *Your Performance in the Portrait*

Your school will use varied strategies to assess your achievement and progress in the Portrait. Strategies may include performance tasks, portfolios, projects, and presentations of learning.



## *What Can I Do Now?*

Discuss the Portrait with your family, teachers, and administrators. Visit the Department's Portrait of a Graduate webpage using the QR code below for additional guidance related to the Portrait.



New York State

## **PORTRAIT OF A GRADUATE**

[nysed.gov/grad-measures](https://nysed.gov/grad-measures)  
[GradMeasures@nysed.gov](mailto:GradMeasures@nysed.gov)

