



New York State PORTRAIT OF A GRADUATE

School Board

NEED-TO-KNOW

The New York State Portrait of a Graduate outlines a shared vision for student success, emphasizing holistic development, culturally responsive practices, and future readiness. School Board members are essential in bringing this vision to life through local policy and resource allocation.



Local Relevance

Anchor local goals and planning to ensure resource allocation supports the Portrait and in turn the NYS Learning Standards, the NYS Social-Emotional Learning Benchmarks, and the NYS Culturally Responsive-Sustaining Education Framework.

CR-SE at the Core

Culturally Responsive-Sustaining Education (CR-SE) is at the core of the Portrait. Adopt inclusive curricula and district-wide policies that recognize and value students' diverse identities, languages, and experiences as strengths.

Authentic Application

Design local policies that intentionally integrate Portrait skills into meaningful, real-world learning experiences. Advocate for policies that empower students to develop future-ready skills in ways that honor their lived experiences and align with their personal aspirations.

Student Performance

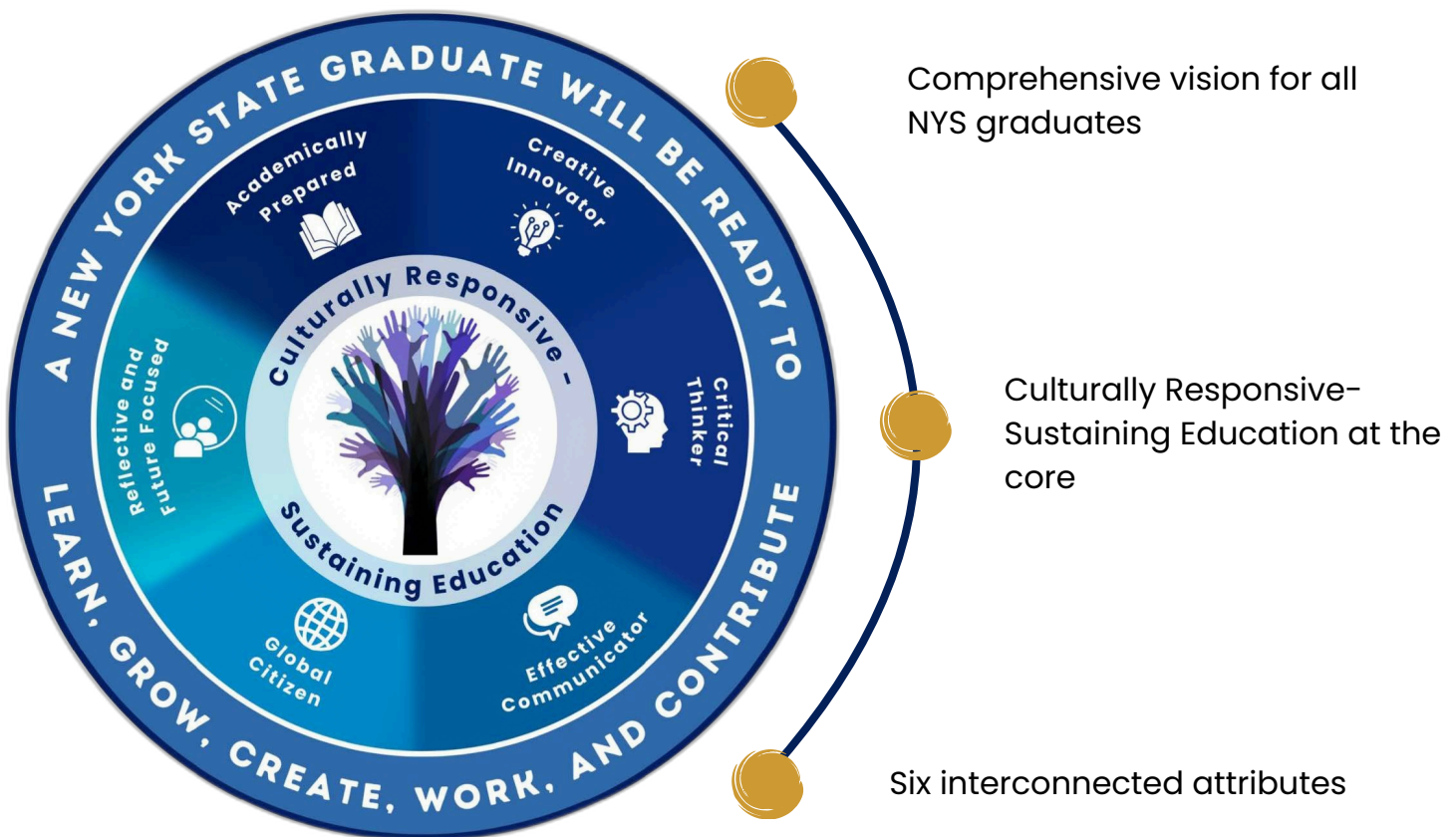
Adopt policies that require varied strategies to assess student achievement and progress in the attributes of the Portrait. Formative, interim, and summative strategies can include performance tasks, portfolios, projects, and presentations of learning.

Shared Values

The Portrait was designed with input from students, families, educators, leaders, and communities across New York State. The Portrait reflects our shared values for children: to be ready to learn, grow, create, work, and contribute.

Strategic Alignment

Connect Portrait attributes to your local community by adopting educational policies that prioritize local issues, reflect student interests, and foster strong partnerships with community stakeholders.



What Can I Do Now?

Visit the Department's Portrait of a Graduate webpage using the QR code below for additional guidance related to the Portrait.



New York State

PORTRAIT OF A GRADUATE

nysed.gov/grad-measures
GradMeasures@nysed.gov

