



New York State PORTRAIT OF A GRADUATE

Parent

NEED-TO-KNOW

The New York State Portrait of a Graduate outlines what your child will gain from their P-12 education to support their ability to thrive in college, careers, and as an engaged citizen in today's world. The Portrait supports your child's success beyond high school graduation.



Whole-Child Development

The Portrait supports your child's growth in every way. Your child will grow academically, socially, emotionally, and culturally. The emphasis on whole-child development will better prepare your child for college, careers, and life as an engaged citizen.

Equity and Belonging

Culturally Responsive-Sustaining Education (CR-SE) is at the core of the Portrait. Educators and leaders will work to make your child feel seen, heard, and valued at school. Educational communities will strive to create a learning environment where your child can thrive.

Authentic Application

Portrait skills – such as communication, collaboration, and critical thinking – will be embedded into real-world projects, interdisciplinary units, and work based learning. Your child will be encouraged to apply these skills in ways that reflect their lived experiences and aspirations.

Shared Values

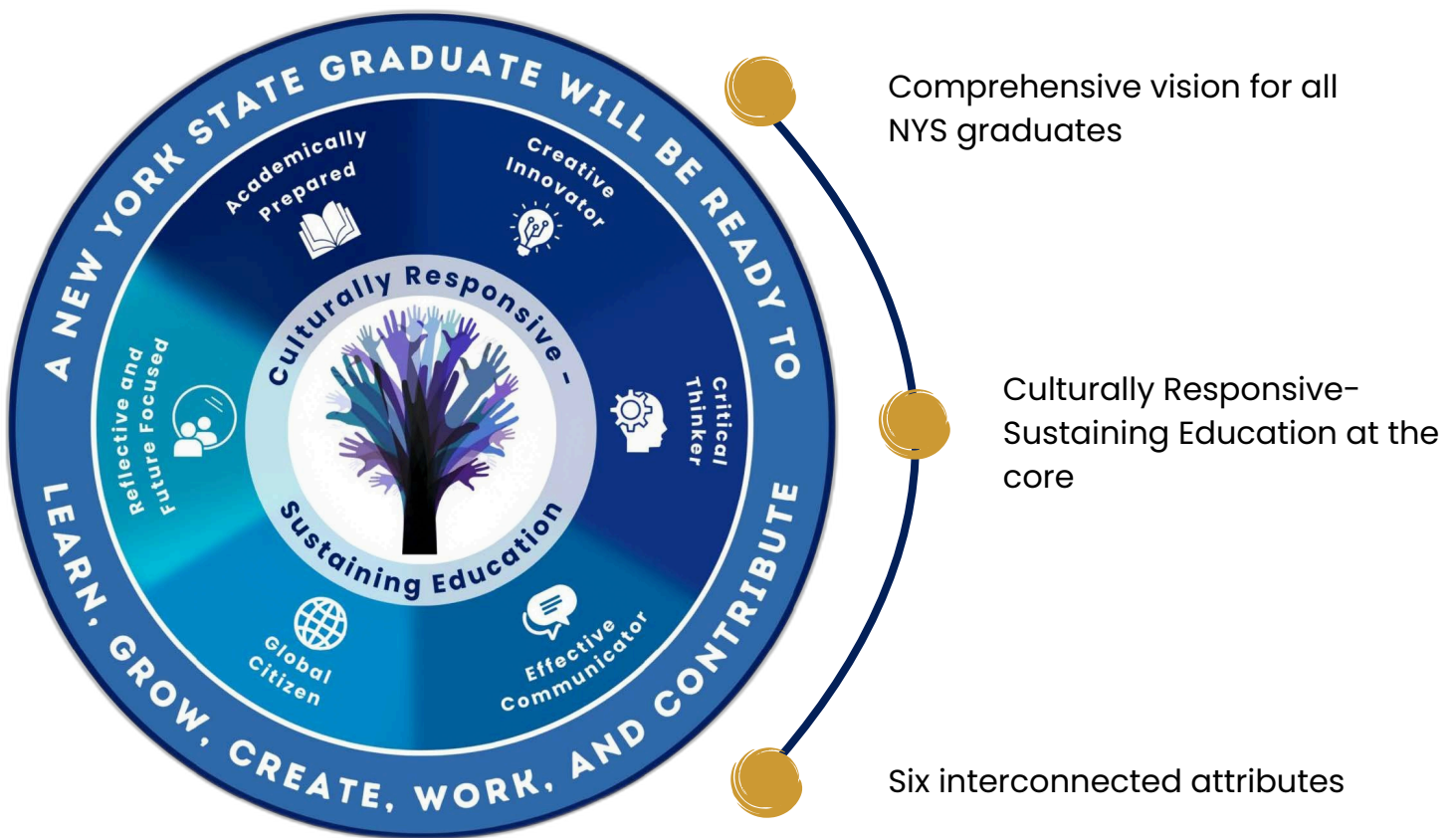
The Portrait was designed with input from students, families, educators, leaders, and communities across New York State. The

Portrait reflects our shared values for children: to be ready to learn, grow, create, work, and contribute.

Your Child's Performance

Schools will use varied strategies to assess your child's achievement and progress in the attributes of the Portrait.

Strategies may include performance tasks, portfolios, projects, and presentations of learning.



What Can I Do Now?

Discuss the Portrait with your child, their teachers, and administrators. Visit the Department's Portrait of a Graduate webpage using the QR code below for additional guidance related to the Portrait.



New York State

PORTRAIT OF A GRADUATE

nysed.gov/grad-measures
GradMeasures@nysed.gov

