



New York State PORTRAIT OF A GRADUATE

Educator

NEED-TO-KNOW

The New York State Portrait of a Graduate outlines a shared vision for student success, emphasizing holistic development, culturally responsive practices, and future readiness. All P-12 educators are essential in bringing this vision to life through relationships, instruction, and assessment.



Local Relevance

The Portrait supports inclusive, interdisciplinary, and evidence-based instruction imperative to all New York State schools and learning environments. Connect Portrait attributes to your classroom, school, and community. Use local issues, student interests, and partnerships to bring the Portrait to life.

CR-SE at the Core

Culturally Responsive-Sustaining Education (CR-SE) is at the core of the Portrait. Affirm students' identities and experiences through inclusive curricula and classroom practices. Recognize and value students' diverse identities, languages, and experiences as strengths.

Authentic Application

Embed Portrait skills – such as communication, collaboration, and critical thinking – into real-world projects, interdisciplinary units, and work based learning. Encourage students to apply these skills in ways that reflect their lived experiences and aspirations. Foster future ready skills in the classroom.

Student Performance

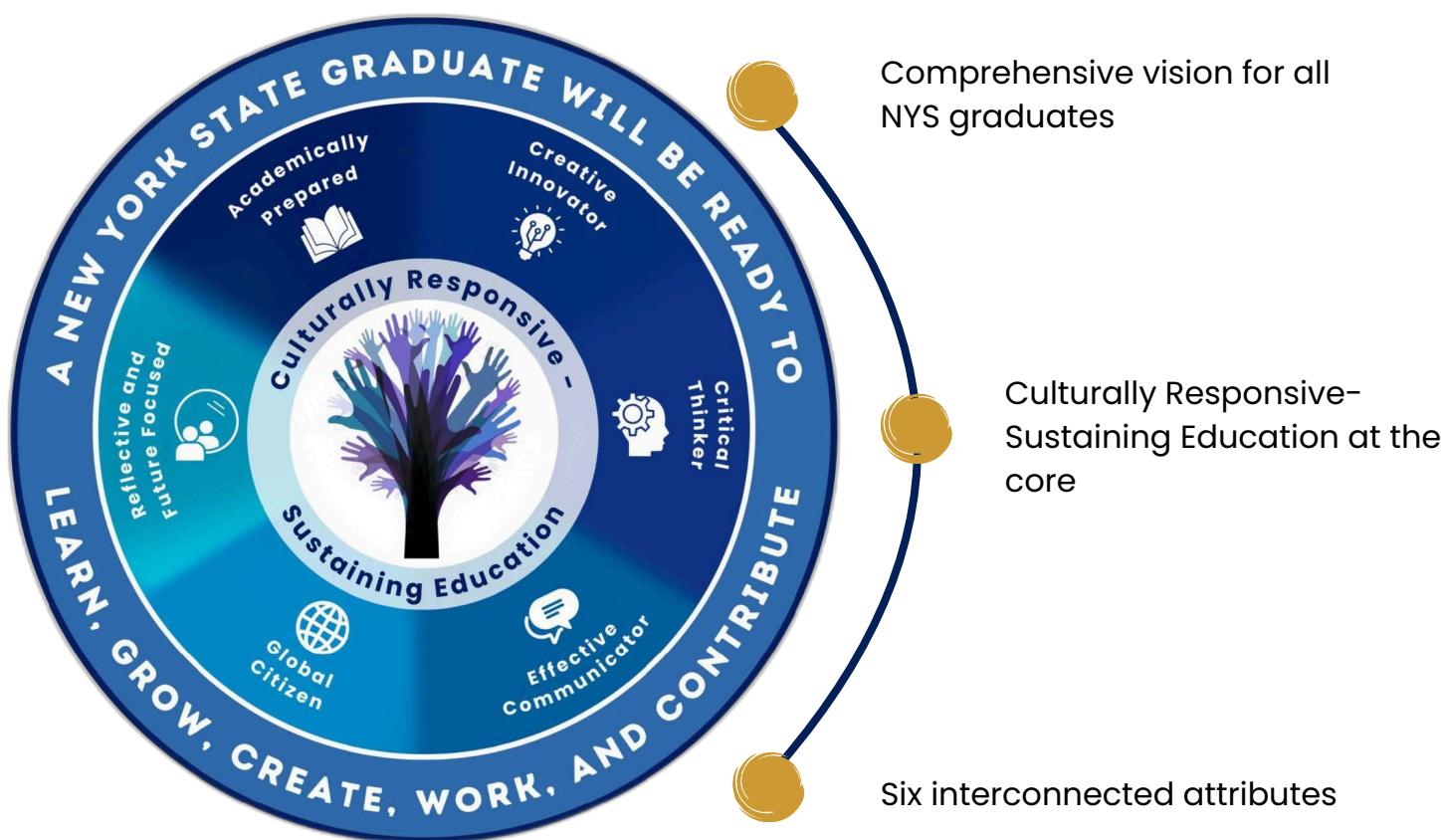
Use varied strategies to assess student achievement and progress in the attributes of the Portrait. Formative, interim, and summative strategies can include performance tasks, portfolios, rubric-based projects and more traditional assessments like classroom quizzes.

Intentional Alignment

Design instruction that aligns the Portrait with the NYS Learning Standards, the NYS Social-Emotional Learning Benchmarks, and the NYS Culturally Responsive-Sustaining Education Framework.

Shared Responsibility

Success depends not only on teachers, but also administrators, families, and community partners. Work collaboratively to co-design learning experiences and share strategies that support implementation of the Portrait across classrooms, schools, and communities.



What Can I Do Now?

Visit the Department's Portrait of a Graduate webpage using the QR code below for additional guidance related to the Portrait.



New York State

PORTRAIT OF A GRADUATE

nysed.gov/grad-measures
GradMeasures@nysed.gov

