



New York State PORTRAIT OF A GRADUATE

Administrator

NEED-TO-KNOW

The New York State Portrait of a Graduate outlines a shared vision for student success, emphasizing holistic development, culturally responsive practices, and future readiness. Administrators are essential in bringing this vision to life through setting the vision, aligning systems and practices, and creating a culture where the attributes of the Portrait are intentionally developed and celebrated.



Local Relevance

The Portrait supports inclusive, interdisciplinary, and evidence-based instruction imperative to all New York State schools and learning environments. Use local issues, student interests, and partnerships to bring the Portrait to life and connect Portrait attributes to your school, district, and community.

CR-SE at the Core

Culturally Responsive-Sustaining Education (CR-SE) is at the core of the Portrait. Affirm students' identities and experiences through inclusive curricula and building- and district-wide practices. Support educators' ability to recognize and value students' diverse identities, languages, and experiences as strengths.

Authentic Application

Ensure Portrait skills – such as communication, collaboration, and critical thinking – are embedded into real-world projects, interdisciplinary units, and work based learning. Encourage educators to provide students opportunities to develop future ready skills in ways that reflect their lived experiences and aspirations.

Student Performance

Support educators' use of varied strategies to assess student achievement and progress in the attributes of the Portrait. Formative, interim, and summative strategies can include performance tasks, portfolios, projects, and presentations of learning.

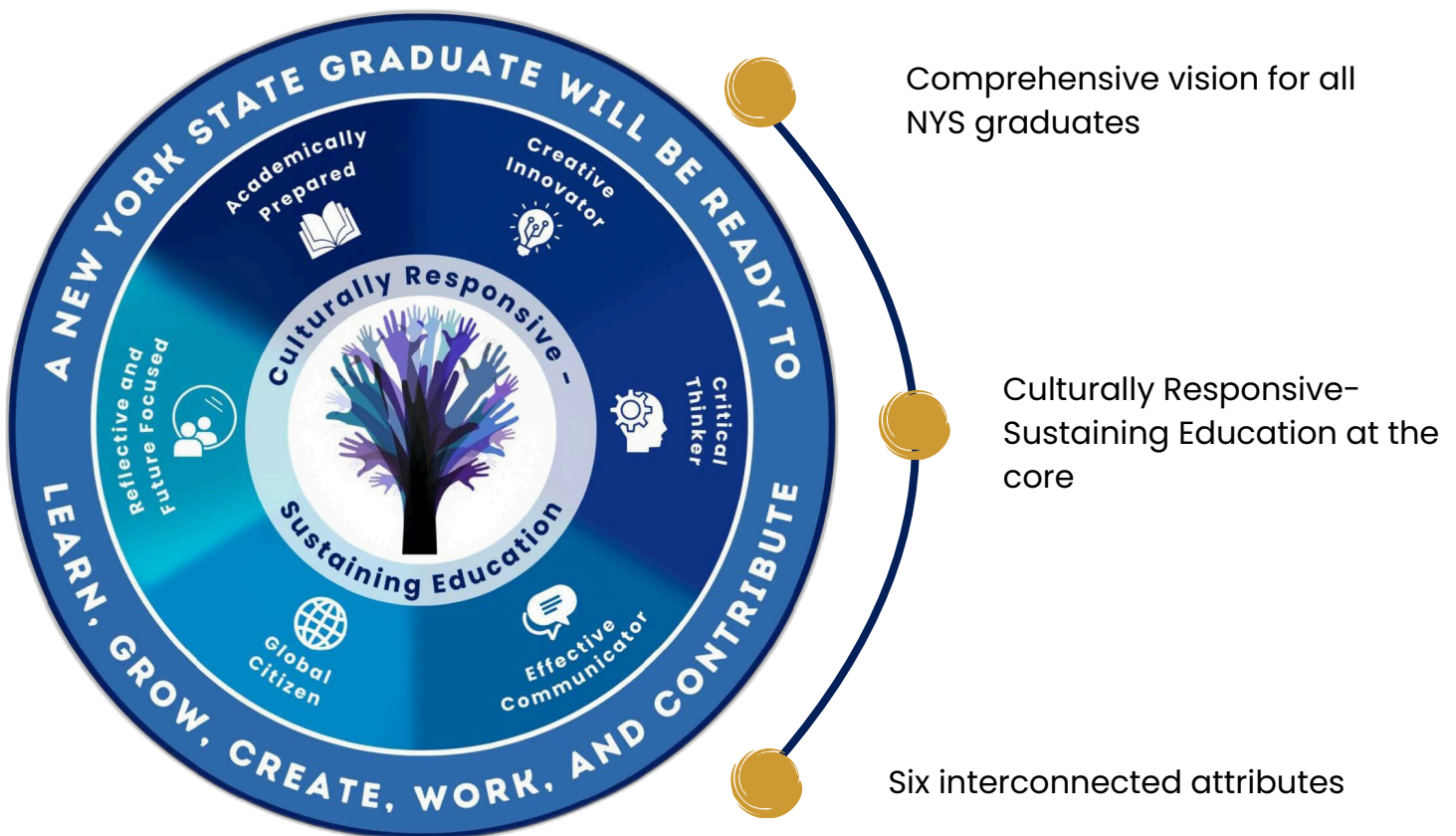
Intentional Alignment

Ensure instruction aligns the Portrait with the NYS Learning Standards, the NYS Social-Emotional Learning Benchmarks, and the NYS Culturally Responsive-Sustaining Education Framework.

Shared Responsibility

Success depends not only on administrators, but also teachers, families, students, and community partners.

Work collaboratively to facilitate learning experiences and strategies that support implementation of the Portrait across classrooms, schools, and communities.



What Can I Do Now?

Visit the Department's Portrait of a Graduate webpage using the QR code below for additional guidance related to the Portrait.



New York State

PORTRAIT OF A GRADUATE

nysed.gov/grad-measures
GradMeasures@nysed.gov

