

Application: Math, Engineering, and Science Academy Charter High School

Gretchen Liga - gliga@csbm.com
2021-2022 Annual Report

Entry 1 School Info and Cover Page

Completed Oct 6 2022

Instructions

Required of ALL Charter Schools

Each Annual Report begins with a completed School Information and Cover Page. The information is collected in a survey format within Annual Report portal. When entering information in the portal, some of the following items may not appear, depending on your authorizer and/or your responses to related items.

Entry 1 School Information and Cover Page

(New schools that were not open for instruction for the 2021-2022 school year are not required to complete or submit an annual report this year).

Please be advised that you will need to complete this cover page (including signatures) before all of the other tasks assigned to you by your school's authorizer are visible on your task page. While completing this cover page task, please ensure that you select the correct authorizer **(as of June 30, 2022)** or you may not be assigned the correct tasks.

BASIC INFORMATION

a. SCHOOL NAME

(Select name from the drop down menu)

MATH, ENGINEERING AND SCIENCE ACADEMY CHARTER HIGH SCHOOL 800000076137

a1. Popular School Name

MESA

b. CHARTER AUTHORIZER (As of June 30th, 2021)

Please select the correct authorizer as of June 30, 2022 or you may not be assigned the correct tasks.

BOARD OF REGENTS

d. DISTRICT / CSD OF LOCATION

CSD #32 - BROOKLYN

e. DATE OF INITIAL CHARTER

12/2012

f. DATE FIRST OPENED FOR INSTRUCTION

8/2013

c. School Unionized

Is your charter school unionized?

No

f. APPROVED SCHOOL MISSION (Regents, NYCDOE, and Buffalo BOE authorized schools only)

MISSION STATEMENT

Math, Engineering, and Science Academy (MESA) Charter High School will provide a rigorous education that equips each student with the ability to succeed in life and in college. MESA students will develop a passion for science, technology, engineering, and mathematics, and through an intensive college readiness program, develop critical thinking and self-advocacy.

g. KEY DESIGN ELEMENTS (Regents, NYCDOE, and Buffalo BOE authorized schools only)

KEY DESIGN ELEMENTS (Briefly describe each Key Design Elements (KDE) as presented in the schools approved charter. KDEs are those general aspects of the school that are innovative or unique to the school’s mission and goals, are core to the school’s overall design, and are critical to its success.

KDE 1	Four-year College Bound program helps each student develop a meaningful and actionable postsecondary plan.
KDE 2	Academic focus on STEM fields, including STEMblock, where students take project-based courses (i.e. Bridge Building or Ecosystem Study) around STEM projects taught by Math for America instructors.
KDE 3	Daily 9th Grade Writing Seminar supplements ELA in developing college-ready reading and writing.
KDE 4	Strong support for teaching staff, including Principal and Instructional Coach, a built-in common planning period, and minimal administrative duties for teachers besides instruction and advisory.
KDE 5	Strong focus on school culture and family engagement, including full-time School Culture Coordinator and daily Advisory
KDE 6	Weekly effort grades in each class reinforce habits of success, such as respect, punctuality,

	engagement, and effort
KDE 7	Explicit focus on family and community engagement, including summer home visits for every single student, parent and student orientations, and yearround parent satisfaction surveys
KDE 8	Year-round calendar make for more reasonable use of time, allows for enrichment instruction, and minimizes loss of knowledge and skill over the summer
KDE 9	(No response)
KDE 10	(No response)

Need additional space for variables

No

h. SCHOOL WEB ADDRESS (URL)

<https://www.mesacharter.org/>

i. Total Approved Charter Enrollment for 2021-2022 School Year (exclude Pre-K program enrollment)

500

j. Total Enrollment on June 30, 2022 (exclude Pre-K program enrollment)

488

k. Grades Served during the 2021-2022 School Year (exclude Pre-K program students)

Check all that apply

Grades Served	9, 10, 11, 12
---------------	---------------

l1. DOES THE SCHOOL CONTRACT WITH A CHARTER OR EDUCATIONAL MANAGEMENT ORGANIZATION?

No

FACILITIES INFORMATION

m. FACILITIES

Will the school maintain or operate multiple sites in 2022-2023?

No, just one site.

MATH, ENGINEERING AND SCIENCE ACADEMY CHARTER HIGH SCHOOL 800000076137

School Site 1 (Primary)

m1. SCHOOL SITES

Please provide information on Site 1 for the upcoming school year.

	Physical Address	Phone Number	District/CSD	Grades to be Served at Site for coming year (K-5, 6-9, etc.)	Receives Rental Assistance for Which Grades (If yes, enter the appropriate grades. If no, enter No).
Site 1	231 Palmetto Street, Brooklyn, NY 11221	718-282-7426	NYC CSD 32	9-12	No

m1a. Please provide the contact information for Site 1.

	Name	Title	Work Phone	Alternate Phone	Email Address
School Leader	Lauren Rawles	School Director	718-282-7426		lrawles@mesacharter.org
Operational Leader	Emily Davidian	Director of Operations	718-282-7426		edavidian@mesacharter.org
Compliance Contact	Lauren Rawles	School Director	718-282-7426		lrawles@mesacharter.org
Complaint Contact	Lauren Rawles	School Director	718-282-7426		lrawles@mesacharter.org
DA A Coordinator	Shannon Sarthou	Counseling Department Leader and Senior Clinical Social Worker	718-282-7426		ssarthou@mesacharter.org
Phone Contact for After Hours Emergencies	Lauren Rawles	School Director	718-282-7426		lrawles@mesacharter.org

m1b. Is site 1 in public (co-located) space or in private space?

Co-located Space

m1c. Please list the terms of your current co-location.

	Date school will leave current co-location	Is school working with NYCDOE to expand into current space?	If so, list year expansion will occur.	Is school working with NYCDOE to move to separate space?	If so, list the proposed space and year planned for move	School at Full Capacity at Site
Site 1	N/A	No		No		Yes

IF LOCATED IN PRIVATE SPACE IN NYC OR IN DISTRICTS OUTSIDE NYC

m1d. Upload a current Certificate of Occupancy (COO) and the annual Fire Inspection Report for school site 1 if located in private space in NYC or located outside of NYC .

Certificate of Occupancy and Fire Inspection. Provide a copy of a current and non-expired certificate of occupancy (if outside NYC or in private space in NYC). For schools that are not in district space (NYC co-locations), provide a copy of a current and non-expired certificate of occupancy, and a copy of the current annual fire inspection results, which should be dated on or after July 1, 2021.

- **Fire inspection certificates must be updated annually. For the upcoming school year 2022-2023, the fire inspection certificate must be dated after July 1, 2021.**
- **If the fire inspection certificate is dated after the August 1, 2022 submission of the Annual Report, please submit the new certificate with the Annual Report entries due on November 1, 2022.**

Site 1 Certificate of Occupancy (COO)

Site 1 Fire Inspection Report

CHARTER REVISIONS DURING THE 2021-2022 SCHOOL YEAR

n1. Were there any revisions to the school’s charter during the 2021-2022 school year? (Please include approved or pending material and non-material charter revisions).

No

o. Has your school's Board of Trustee's approved a budget for the 2021-2022 FY?

Yes

ATTESTATIONS

p. Individual Primarily Responsible for Submitting the Annual Report. (To write type in a phone number with an extension, please use this format: 123-456-7890-3. The dash and number 3 at the end of the phone number refers to the individual's phone extension. Do not type in the work extension or the abbreviation for it just the dash and the extension number after the phone number).

Name	Lauren Rawles
Position	School Director
Phone/Extension	718-282-7426
Email	lrawles@mesacharter.org

p. Our signatures (Executive Director/School Leader/Head of School and Board President) below attest that our school has reviewed, understands and will comply with the employee clearance and fingerprint requirements as outlined in Entry 10 and found in the [NYSED CSO Fingerprint Clearance Oct 2019 Memo](#). Click **YES to agree.**

Responses Selected:

Yes

q. Our signatures (Executive Director/School Leader/Head of School and Board President) below attest that all of the information contained herein is truthful and accurate and that this charter school is in compliance with all aspects of its charter, and with all pertinent Federal, State, and local laws, regulations, and rules. We understand that if any information in any part of this report is found to have been deliberately misrepresented, that will constitute grounds for the revocation of our charter. Click **YES** to agree and then use the mouse on your PC or the stylus on your mobile device to sign your name).

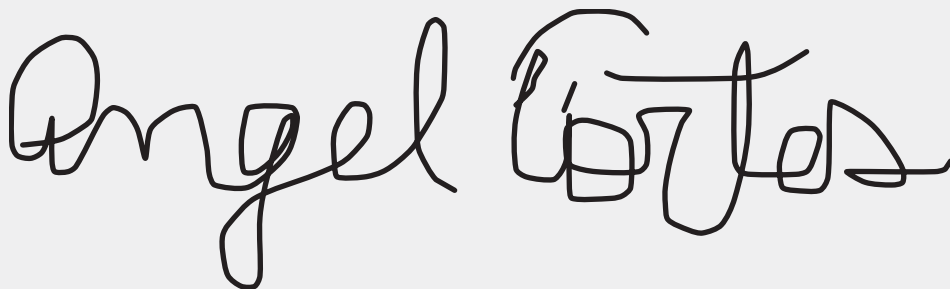
Responses Selected:

Yes

Signature, Head of Charter School

A handwritten signature in black ink on a light gray background. The signature is highly stylized and cursive, appearing to read "H. [unclear]".

Signature, President of the Board of Trustees

A handwritten signature in black ink on a light gray background. The signature is cursive and clearly legible, reading "Angel Cortes".

Date

Jul 31 2022

Thank you.



Entry 3 Progress Toward Goals

Completed Oct 6 2022

Instructions

Regents, NYCDOE, and Buffalo BOE-Authorized Charter Schools ONLY

The following tables reflect formatting in the online portal required for Board of Regents, NYCDOE, and Buffalo BOE authorized charter schools only. These charter schools should report all Progress Toward Charter Goals as per their currently approved charters no later than **November 1, 2022**.

PLEASE NOTE: This is a required task, and it is marked optional for administrative purposes only.

Entry 3 Progress Toward Goals

PROGRESS TOWARD CHARTER GOALS

Regents, NYCDOE, and Buffalo BOE-Authorized Charter Schools ONLY

Complete the tables provided. List each goal and measure as contained in the school's currently approved charter, and indicate whether the school has met or not met the goal. Please provide information for all goals no later than November 2, 2022.

MATH, ENGINEERING AND SCIENCE ACADEMY CHARTER HIGH SCHOOL 800000076137

1. ACADEMIC STUDENT PERFORMANCE GOALS

Regents, NYCDOE, and Buffalo BOE-Authorized Charter Schools ONLY

The following tables reflect formatting in the online portal required for Board of Regents, NYCDOE, and Buffalo BOE authorized charter schools only. These charter schools should report all Progress Toward Charter Goals as per their currently approved charters no later than **November 1, 2022**.

2021-2022 Progress Toward Attainment of Academic Goals

	Academic Student Performance Goal	Measure Used to Evaluate Progress Toward Attainment of Goal	Goal - Met, Not Met or Unable to Assess	If not met, describe efforts the school will take to meet goal. If unable to assess goal, type N/A for Not Applicable
Academic Goal 1	The school will maintain an Accountability Status of Good Standing	ESSA Accountability Designation	Met	
Academic Goal 2	The school's proficiency rates, based on cohort ELA and Mathematics outcomes will be at least one standard deviation above the mean for schools with the same grade configuration and similar population of students identified as economically disadvantaged, students with disabilities and English language learners.	Comparative Proficiency Rates	Unable to Assess	Not Applicable.
Academic Goal 3	The school will exceed the state average of Annual Regents testing outcomes for every tested subject for all	Annual Regents testing outcomes for every tested subject for all students	Unable to Assess	Not Applicable. NYS proficiency outcomes are not yet available.

	students.			
Academic Goal 4	The school will exceed the state average of Annual Regents testing outcomes for every tested subject by subgroup.	Subgroup Annual Regents Outcomes	Unable to Assess	Not Applicable. NYS proficiency outcomes are not yet available.
Academic Goal 5	The school will exceed the state average for Cohort Regents testing outcomes for ELA, mathematics, science, Global History and US History for all students.	Aggregate Total Cohort Regents Testing Outcomes	Unable to Assess	Not Applicable. We do not know state proficiency outcomes. US History Regents was not administered by NYS.
Academic Goal 6	The school will exceed the state average for Cohort Regents testing outcomes for ELA, mathematics, science, Global History and US History by subgroup.	Subgroup Total Cohort Regents Testing Outcomes	Unable to Assess	Not Applicable. NYS proficiency outcomes are not yet available.
Academic Goal 7	The 4-year and 5-year graduation rate for all students will meet or exceed 80%	Aggregate Cohort Graduation Rate	Met	Goal met. The four year graduation rate for the 2018 cohort was 93%, and the five year graduation rate for the 2017 cohort was 94%
				Goal met for economically

Academic Goal 8	The 4-year and 5-year graduation rate for students identified as economically disadvantaged, students with disabilities, and English language learners will meet or exceed 80%.	Subgroup Cohort Graduation Rate	Met	<p>disadvantaged and; partially met for ELL.</p> <p>2022 Cohort 4 year rate ED—93% SWD—90% ELL—74%*</p> <p>2021 Cohort 5 year rate: ED—94% SWD—85%* ELL—95%**</p> <p>**MESA’s internal calculations differ from NYSED, which has a 77% rate. We are not sure where the difference comes from **NYSED has MESA listed as enrolling zero ELLs for this cohort. We are not sure why this is the case.</p>
Academic Goal 9	The percentage of all students in a cohort that have passed 3 out of 5 Regents exams required for graduation by their 3rd year of high school will meet or exceed 75%.	Aggregate On-Track to Graduate	Met	
	The percentage of cohort by			

Academic Goal 10	subgroup that has passed 3 out of 5 Regents exams required for graduation by their 3rd year of high school will meet or exceed 75%.	Subgroup On-Track to Graduate	Met	
------------------	---	-------------------------------	-----	--

2. Do have more academic goals to add?

Yes

2021-2022 Progress Toward Attainment of Academic Goals

	Academic Student Performance Goal	Measure Used to Evaluate Progress Toward Attainment of Goal	Goal - Met, Not Met or Unable to Assess	2019-2020 progress toward attainment of goal Met/Not Met/Unable to Assess During Due to Closure
Academic Goal 11	The percentage of students in a 4-year and 5-year cohort that remain enrolled in the school until they graduate from the high school program will meet or exceed 85%.	Aggregate Student Persistence	Met	
	The percentage of students identified as economically disadvantaged, students with disabilities, and			

Academic Goal 12	English language learners in a 4-year and 5-year cohort that remain enrolled in the school until they graduate from the high school program will meet or exceed 85%.	Subgroup Student Persistence	Met	
Academic Goal 13				
Academic Goal 14				
Academic Goal 15				
Academic Goal 16				
Academic Goal 17				
Academic Goal 18				
Academic Goal 19				
Academic Goal 20				

3. Do have more academic goals to add?

No

4. ORGANIZATION GOALS

For the 2021-2022 school year, any organization goals that cannot be evaluated due to school closure resulting in a lack of data and changes in testing, surveying, and other usual practices should be reported as “N/A”.

2021-2022 Progress Toward Attainment of Organization Goals

	Organizational	Measure Used to	Goal - Met, Not	If not met,
--	----------------	-----------------	-----------------	-------------

	Goal	Evaluate Progress	Met, or Unable to Assess	describe efforts the school will take to meet goal. If unable to assess goal, type N/A for Not Applicable
Org Goal 1	<p>Benchmark 2: Teaching and Learning</p> <p>School leaders have systems in place designed to cultivate shared accountability and high expectations and that lead to students' well-being, improved academic outcomes, and educational success. The school has rigorous and coherent curriculum and assessments that are aligned to the Common Core Learning Standards (CCLS) for all students. Teachers engage in strategic practices and decision-making in order to address the gap between what students know and need to learn so that all students experience consistent high</p>	<p>Performance Framework key indicators for curriculum, instruction, assessment and program evaluation, and supports for diverse learners.</p>	<p>Met</p>	<p>MESA uses a standards-based grading framework to ensure that all instruction is aligned with CCLS. MESA instructional leaders conduct regular professional development, coaching, observation, and critical friends groups to ensure consistent implementation of instruction.</p>

	<p>levels of engagement, thinking and achievement.</p>			
Org Goal 2	<p>Benchmark 3: Culture, Climate, and Family Engagement The school has systems in place to support students' social and emotional health and to provide for a safe and respectful learning environment. Families, community members and school staff work together to share in the responsibility for student academic progress, social-emotional growth, and well-being. Families and students are satisfied with the school's academics and the overall leadership and management of the school.</p>	<p>Performance Framework key indicators for Behavior Management and Safety, Family Engagement and Communication, and Social-Emotional Support</p>	Met	<p>MESA has four social-emotional counselors or social workers, for a ratio of one dedicated mental health professional for every 120 students. MESA implements a robust advisory curriculum designed to support students' mental health, and a full-time family coordinator to engage parents and address their concerns. MESA's student retention far exceeds the district of location across all subgroups, speaking to the high level of satisfaction that families have with the school.</p>
	<p>Benchmark 6: Board Oversight and Governance The board of trustees provides</p>			

Org Goal 3	<p>competent stewardship and oversight of the school while maintaining policies, establishing performance goals, and implementing systems to ensure academic success, organizational viability, board effectiveness and faithfulness to the terms of its charter.</p>	<p>Performance Framework key indicators for effective board practices</p>	<p>Met</p>	<p>MESA's board is a diverse array of professionals who meet monthly, as well as in committee, and oversee the governance and operation of the school.</p>
Org Goal 4	<p>Benchmark 7: Organizational Capacity The school has established a well-functioning organizational structure and clearly delineated roles for staff, management, and board members. The school has systems and protocols that allow for the successful implementation, evaluation, and improvement of its academic program and operations.</p>	<p>Performance Framework key indicators for School Leadership, Professional Climate, and Contractual Relationships</p>	<p>Met</p>	<p>Staff retention has averaged 84% over the last three years, creating consistency for students and speaking to the level of satisfaction amongst the staff.</p>
	<p>Benchmark 8: Mission and Key Design Elements</p>	<p>Performance</p>		

Org Goal 5	The school is faithful to its mission and has implemented the key design elements outlined in its charter.	Framework key indicators for faithfulness of implementation of mission and school design	Met	
Org Goal 6	<p>Benchmark 9: Enrollment, Recruitment, and Retention</p> <p>The school is meeting or making annual progress toward meeting the enrollment plan outlined in its charter and its enrollment and retention targets for students with disabilities, English language learners, and students who are eligible applicants for the free and reduced priced lunch program; or has demonstrated that it has made extensive good faith efforts to attract, recruit, and retain such students.</p>	Enrollment and Retention Rates and Performance Framework key indicators for good faith efforts	Met	<p>MESA has made progress in these areas but has struggled to enroll a comparable number of English Language Learners and Students with Disabilities despite multiple good faith efforts and outreach. MESA continues to engage in multiple ways with the community to enroll ELLs and SWD. It is worth noting that several other high schools in the district have lower ELL enrollment than MESA does. Nevertheless, MESA continues to work towards improvement in this area. As part of its renewal application, MESA will be requesting a set-aside lottery preference for ELLs and SWD.</p>

Org Goal 7	Benchmark 10: Legal Compliance The school has complied with applicable laws, regulations, and the provisions of its charter.	Performance Framework key indicators	Met	
Org Goal 8				
Org Goal 9				
Org Goal 10				
Org Goal 11				
Org Goal 12				
Org Goal 13				
Org Goal 14				
Org Goal 15				
Org Goal 16				
Org Goal 17				
Org Goal 18				
Org Goal 19				
Org Goal 20				

5. Do have more organizational goals to add?

(No response)

6. FINANCIAL GOALS

2021-2022 Progress Toward Attainment of Financial Goals

	Financial Goals	Measure Used to Evaluate Progress	Goal - Met, Not Met, or Partially Met	If not met, describe efforts the school will take to meet goal.
Financial Goal 1	<p>Benchmark 4: Financial Condition</p> <p>The school is in sound and stable financial condition as evidenced by performance on key financial indicators.</p>	<p>NYSED Fiscal dashboard and audited financial statements</p>	Met	
Financial Goal 2	<p>Benchmark 5: Financial Management</p> <p>The school operates in a fiscally sound manner with realistic budgets pursuant to a long-range financial plan, appropriate internal controls and procedures, and in accordance with state law and generally accepted accounting practices.</p>	<p>Performance Framework key indicators for fiscal procedures</p>	Met	
Financial Goal 3				
Financial Goal 4				
Financial Goal 5				

7. Do have more financial goals to add?

No

Thank you.

Entry 4 - Audited Financial Statements

Completed Oct 31 2022

Required of ALL Charter Schools

ALL SUNY-authorized charter schools must upload the financial statements and related documents in PDF format into the SUNY Epicenter system no later than **November 1, 2022**. SUNY CSI will forward to NYSED CSO. **SUNY-authorized charter schools** are asked to ensure that security features such as password protection are turned off.

ALL Regents, NYCDOE, and Buffalo BOE-authorized charter schools must upload final, audited financial statements to the [Annual Report Portal](#) no later than **November 1, 2022**. Upload the independent auditor's report, any advisory and/or management letter, and the internal controls report as one submission, combined into a PDF file, ensuring that security features such as password protections are removed from all school uploaded documents.

PLEASE NOTE: This task appears as visible and optional task in the online portal until August 1 2022 but will be identified as a required task thereafter and due on November 1, 2022. This is a required task, and it is marked optional for administrative purposes only.

[MESA Charter High School FST with Mgmt Ltr](#)

Filename: MESA Charter High School FST with jXaepRI.pdf Size: 593.2 kB

Entry 4b - Audited Financial Report Template (BOR/NYC/BOE)

Completed Nov 1 2022

Instructions - Regents-Authorized Charter Schools ONLY

Regents-authorized schools must download and complete the Excel spreadsheet entitled "Audited Financial Report Template" from the online portal or the [2021-2022 Annual Reports](#) webpage. Upload the completed file in Excel format and submit by **November 1, 2022**.

EDUCATION CORPORATIONS WITH MORE THAN ONE SCHOOL SHOULD COMPLETE THE EXCEL SPREADSHEET FOR THE EDUCATION CORPORATION AS A WHOLE, NOT FOR THE INDIVIDUAL SCHOOLS. PLEASE SUBMIT THE SAME EXCEL SPREADSHEET FOR EACH OF THE SCHOOLS.

PLEASE NOTE: This is a required task, and it is marked optional for administrative purposes only.

[MESA Annual Financial Statement Audit Report](#)

Filename: MESA Annual Financial Statement opinMgF.xlsx Size: 83.3 kB

Entry 4c - Additional Financial Documents

Completed Nov 1 2022

Instructions - Regents, NYCDOE and Buffalo BOE authorized schools must upload financial documents and submit by **November 1, 2022**. The items listed below should be uploaded, with an explanation if not applicable or available. For example, a "federal Single Audit was not required because the school did not expend federal funds of more than the \$750,000 Threshold."

1. Advisory and/or Management letter
2. Federal Single Audit
3. CSP Agreed-Upon Procedure Report
4. Evidence of Required Escrow Account for each school^[1]
5. Corrective Action Plan for Audit Findings and Management Letter Recommendations

^[1] Note: For BOR schools chartered or renewed after the 2017-2018 school year, the escrow account per school is \$100,000.

PLEASE NOTE: This is a required task, and it is marked optional for administrative purposes only.

MESA Charter High School Mgmt Ltr

Filename: MESA Charter High School Mgmt Ltr.pdf Size: 142.3 kB

12

Filename: 12. JuneBankStatement.6377.FY22.MESACS.pdf Size: 84.4 kB

MESA Entry 4C

Filename: MESA Entry 4C.pdf Size: 101.6 kB

Entry 4d - Financial Services Contact Information

Completed Oct 27 2022

Regents, NYCDOE, and Buffalo BOE authorized schools should enter financial contact information directly into the form within the portal by **November 1, 2022**.

Form for "Financial Services Contact Information"

1. School Based Fiscal Contact Information

	School Based Fiscal Contact Name	School Based Fiscal Contact Email	School Based Fiscal Contact Phone
	Arthur Samuels	asamuels@mesacharter.org	718-282-7426

2. Audit Firm Contact Information

	School Audit Contact Name	School Audit Contact Email	School Audit Contact Phone	Years Working With This Audit Firm
	Gus Saliba, PKF O'Connor Davies			5

3. If applicable, please provide contact information for the school's outsourced financial services firm.

	Firm Name	Contact Person	Mailing Address	Email	Phone	Years With Firm
	Charter School Business Management	Heather Blumberg	237 West 35th Street, Suite 101, New York, NY 10001			10

Entry 5 - Fiscal Year 2022-2023 Budget

Completed Oct 31 2022

SUNY-authorized charter schools should download the [2022-23 Budget and Quarterly Report Template and the 2022-23 Budget Narrative Questionnaire](#) from the SUNY website and upload the completed template into Epicenter. SUNY CSI will forward to NYSED CSO. **Due November 1, 2022.**

Regents, NYCDOE, and Buffalo BOE authorized charter schools should upload a copy of the school's FY22 Budget using the [2022-2023 Budget Template](#) in the portal or from the Annual Report website. **Due November 1, 2022.**

The assumptions column should be completed for all revenue and expense items unless the item is self-explanatory. Where applicable, reference the page number or section in the application narrative that indicates the assumption being made. For instance, student enrollment would reference the applicable page number in Section I, C of the application narrative.

PLEASE NOTE: This is a required task, and it is marked optional for administrative purposes only.

MESA_final-2022-2023-ar-budget-template

Filename: MESA final 2022 2023 ar budget template.xlsx **Size:** 38.5 kB

Entry 6 - Board of Trustees Disclosure of Financial Interest Form

Completed Oct 6 2022

Due on August 1, 2022, each member of the charter school's Board of Trustees who served on a charter school education corporation governing one or more charter schools for any period during the 2021-2022 school year must complete and sign a [Trustee Disclosure of Financial Interest Form](#). Acceptable signature formats include:

- Digitally certified PDF signature (i.e., DocuSign)
- Manual signature (1. download to print, 2. manually sign, 3. scan signed document to PDF, and 4. upload into portal)

All completed forms must be collected and uploaded in .PDF format for each individual member. **The education corporation is responsible for completing the form for trustees who left the board during the reporting year.**

Forms completed from past years will not be accepted. **Only the latest version of the form** (updated in April, 2022) is acceptable.).

Trustees serving on an education corporation that governs more than one school are not required to complete a separate disclosure for each school governed by the education corporation. In the Disclosure of Financial Interest Form, trustees must disclose information relevant to any of the schools served by the governing education corporation.

Colavito, Eve

Filename: Colavito Eve.pdf **Size:** 375.1 kB

Martig, Adria

Filename: Martig Adria.pdf **Size:** 409.9 kB

Mancini, Chet

Filename: Mancini Chet.pdf **Size:** 424.5 kB

Patterson, Agatha Financial Disclosure 2022

Filename: Patterson Agatha Financial Disclosure 2022.pdf **Size:** 606.6 kB

Lipstein, Jeremy

Filename: Lipstein Jeremy.pdf **Size:** 630.3 kB

Ryan, Maureen

Filename: Ryan Maureen.pdf **Size:** 1.7 MB

[Rubio, Raul](#)

Filename: Rubio Raul.pdf **Size:** 1.2 MB

[Ward Gaffney, Kym](#)

Filename: Ward Gaffney Kym.pdf **Size:** 2.1 MB

[Pierre, Jacques](#)

Filename: Pierre Jacques.pdf **Size:** 323.8 kB

[Cortes Angel disclosure rev](#)

Filename: Cortes Angel disclosure rev.pdf **Size:** 401.1 kB

Entry 7 BOT Membership Table

Completed Oct 6 2022

Instructions

Required of ALL charter schools

ALL charter schools or education corporations governing multiple schools must complete the Board of Trustees Membership Table within the online portal. Please be sure to include and identify parents who are members of the Board of Trustees and indicate whether parents are voting or non-voting members.

Entry 7 BOT Table

1. SUNY-AUTHORIZED charter schools are required to provide information for VOTING Trustees only.
2. REGENTS, NYCDOE, and BUFFALO BOE-AUTHORIZED charter schools are required to provide information for all --VOTING and NON-VOTING-- trustees.

MATH, ENGINEERING AND SCIENCE ACADEMY CHARTER HIGH SCHOOL 800000076137

Authorizer:

Who is the authorizer of your charter school?

Board of Regents

1. 2021-2022 Board Member Information (Enter info for each BOT member)

	Trustee Name	Trustee Email Address	Position on the Board	Committee Affiliations	Voting Member Per By-Laws (Y/N)	Number of Terms Served	Start Date of Current Term (MM/DD/YYYY)	End Date of Current Term (MM/DD/YYYY)	Board Meetings Attended During 2021-2022
1	Angel Cortes		Vice Chair	Executive	Yes	4	06/15/2021	06/15/2023	12
2	Chester Mancini		Secretary	Executive; Finance	Yes	4	06/15/2021	06/15/2023	12
3	Agatha Patterson		Treasurer	Executive; Finance	Yes	2	09/24/2021	09/24/2023	10
4	Jacques Pierre		Trustee/Member	Executive; Education	Yes	3	07/22/2022	07/22/2024	9
5	Raul Rubio		Trustee/Member	Executive	Yes	5	06/15/2022	06/15/2024	6
6	Maureen Ryan		Chair	Executive	Yes	5	06/15/2022	06/15/2024	11
7	Kim Ward Gaffney		Trustee/Member	Executive	Yes	2	07/22/2022	07/22/2024	10

8	Eve Colavito		Trustee/Member	Executive; Education	Yes	3	06/15/2021	11/30/2021	5 or less
9	Jeremy Lipstein		Trustee/Member	Executive; Finance	Yes	2	06/15/2021	11/30/2021	5 or less

1a. Are there more than 9 members of the Board of Trustees?

Yes

1b. Board Member Information

	Trustee Name	Trustee Email Address	Position on the Board	Committee Affiliations	Voting Member Per By-Laws (Y/N)	Number of Terms Served	Start Date of Current Term (MM/DD/YYYY)	End Date of Current Term (MM/DD/YYYY)	Board Meetings Attended During 2021-2022
10	Adria Martig		Trustee/Member	Executive	Yes	2	06/15/2021	04/30/2022	6
11									
12									
13									
14									
15									

1c. Are there more than 15 members of the Board of Trustees?

No

2. INFORMATION ABOUT MEMBERS OF THE BOARD OF TRUSTEES

1. SUNY-AUTHORIZED charter schools provide response relative to VOTING Trustees only.
2. REGENTS, NYCDOE, and BUFFALO BOE-AUTHORIZED charter schools provide a response relative to all trustees.

a. Total Number of BOT Members on June 30, 2022	7
b.Total Number of Members Added During 2021-2022	0
c. Total Number of Members who Departed during 2021-2022	3
d.Total Number of members, as set in Bylaws, Resolution or Minutes	15

3. Number of Board meetings held during 2021-2022

12

4. Number of Board meetings scheduled for 2022-2023

12

Total number of Voting Members on June 30, 2022:

7

Total number of Voting Members added during the 2021-2022 school year:

0

Total number of Voting Members who departed during the 2021-2022 school year:

3

Total Maximum Number of Voting members in 2021-2022, as set by the board in bylaws, resolution, or minutes:

15

Total number of Non-Voting Members on June 30, 2022:

0

Total number of Non-Voting Members added during the 2021-2022 school year:

0

Total number of Non-Voting Members who departed during the 2021-2022 school year:

0

Total Maximum Number of Non-Voting members in 2021-2022, as set by the board in bylaws, resolution or minutes:

0

Board members attending 8 or fewer meetings during 2021-2022

1

Thank you.

Entry 8 Board Meeting Minutes

Completed Oct 6 2022

Instructions - Required of Regents, NYCDOE, and Buffalo BOE Authorized Schools ONLY

Schools must upload a complete set of monthly board meeting minutes (July 2021-June 2022), which should match the number of meetings held during the 2021-2022 school year, as indicated in the above table. The minutes provided must be the final version approved by the school's Board of Trustees and may be uploaded individually or as one single combined file. Board meeting minutes must be submitted by **August 1, 2022**.

4

Filename: 4. October 2021.pdf **Size:** 558.0 kB

7

Filename: 7. January 2022.pdf **Size:** 554.2 kB

5

Filename: 5. November 2021.pdf **Size:** 560.2 kB

3

Filename: 3. September 2021.pdf **Size:** 522.6 kB

1

Filename: 1. July 2021.pdf **Size:** 537.7 kB

8

Filename: 8. February2022.pdf **Size:** 533.7 kB

[2](#)

Filename: 2. August 2021.pdf Size: 524.1 kB

[12](#)

Filename: 12. June Minutes 2022.docx.pdf Size: 529.7 kB

[11](#)

Filename: 11. May 2022.pdf Size: 529.0 kB

[9](#)

Filename: 9. March 2022.pdf Size: 533.9 kB

[6](#)

Filename: 6. December 2021.pdf Size: 553.8 kB

[10](#)

Filename: 10. April 2022.pdf Size: 527.2 kB

Entry 9 Enrollment & Retention

Completed Oct 6 2022

Instructions for submitting Enrollment and Retention Efforts

Required of ALL Charter Schools

Describe the good faith efforts the charter school has made in 2021-2022 toward meeting targets to attract and retain the enrollment of Students with Disabilities (SWDs), English Language Learners (ELLs), and students who are economically disadvantaged. In addition, describe the school’s plans for meeting or making progress toward meeting its enrollment and retention targets in 2022-2023.

Entry 9 Enrollment and Retention of Special Populations

Recruitment/Attraction Efforts Toward Meeting Targets

	Describe Recruitment Efforts in 2021-2022	Describe Recruitment Plans in 2022-2023
	In 2021-22, 78% of the total student body was economically disadvantaged based on	

<p>Economically Disadvantaged</p>	<p>eligibility for free and reduced price lunch, falling short of the target by 12.6 percentage points. However, this percentage includes only those students who returned lunch forms, and we suspect that the percentage would be significantly closer to the target if more forms had been returned. Our recruitment efforts focused on economically disadvantaged students included:</p> <ul style="list-style-type: none"> • An ongoing relationship with the Bushwick Community Partnership Program to recruit students in foster care • Outreach at food banks and free health care facilities • Vanguard mailings focused on specific zip codes in underserved communities, and • Assistance with completion of the Meal program application, as needed. 	<p>In 2022-23, we will continue the strategies already in place, but increase our recruitment efforts in targeted neighborhoods with higher concentrations of economically disadvantaged families. In addition, we will establish incentives and initiatives to encourage families to complete and return the lunch forms.</p>
<p>English Language Learners</p>	<p>This past year, 16% of MESA's students were English Language Learners, missing the target by 2.2 percentage points. Recruitment strategies for this population of students were are follows:</p> <ul style="list-style-type: none"> • All recruitment and application materials were printed in both English and Spanish • Translators were available at all Open Houses and community outreach events • School officials cultivated relationships with several organizations that serve recent immigrants • Vanguard mailings were done in both English and Spanish. 	<p>MESA's ELL enrollment is somewhat misleading as each year a number of students identified as ELL at the beginning of the year are declassified. MESA is proud its high-quality services have allowed these students to achieve proficiency in English, resulting in our high declassification rate. It is unfortunate that this instructional achievement has resulted in the optics of lower ELL enrollment. MESA is fully committed to enrolling English Language Learners at a rate that is comparable to CSD 32.</p>

Students with Disabilities	<p>In 2021-22, 16% of MESA's students were classified as Students with Disabilities, 1.7 percentage points below the target. To recruit these students, the following strategies were used:</p> <ul style="list-style-type: none"> • School officials met with the Committee on Special Education (CSE) for CSD 32 to inform them about the school and provide them with promotional materials for parents • School leaders established relationships with the Special Education Coordinators and middle schools in the community • The ICT model was stressed at all Open Houses and school visits • Promotional materials listed special supports available for students with special needs. 	<p>In addition to continuing the current strategies in place, MESA will increase its outreach to middle schools in the community to provide more information on the programs we offer for students with special needs. In addition, we will make sure that recruitment materials highlight the record of success we have had working with Students with Disabilities and our high graduation rates. The school's external affairs team will support this work by visiting additional community organizations and schools and reaching out to families to answer questions and inviting students for a shadow day at the school.</p>
----------------------------	--	---

Retention Efforts Toward Meeting Targets

	Describe Retention Efforts in 2021-2022	Describe Retention Plans in 2022-2023
Economically Disadvantaged	<p>To retain FRPL students, we ensured that all parents were informed of the lunch program at the beginning of the school year and provided support to any families who needed assistance completing the paperwork or fully understanding the program. In addition, we covered program costs such as college visit expenses and AT testing fees for all students and families who are unable to afford the expense.</p>	<p>MESA's retention of economically disadvantaged students is close to 100%. Therefore, we will continue the efforts in place in 2022-23.</p>
	To retain English Language	

<p>English Language Learners</p>	<p>Learners, MESA provided an extensive array of services and supports, including a full-time certified ELL teacher afterschool and weekend instruction, Audible books, and extra office hours for counselors and advisors. School representatives conducted home visits or one-on-one intake sessions with each ELL student and his/her family prior to the beginning of the school year. MESA closely monitored each students' progress through ongoing assessments and regularly communicated this progress to students and families. Additional parent engagement opportunities were also provided for families of English Language Learners.</p>	<p>MESA has continually demonstrated a strong record of retention for English Language Learners and will therefore continue to utilize the strategies from 2021-22 in the coming year. If student assessment data, teacher observation, or parental feedback point to a need for additional services, the school will make appropriate and necessary program revisions.</p>
<p>Students with Disabilities</p>	<p>To retain Students with Disabilities, MESA provided all mandated special education services through ICT classrooms and SETT instruction, and supplemented this instruction with extensive student supports, such as afterschool and weekend instruction and extra office hours for counselors and advisors. School representatives conducted home visits or one-on-one intake sessions with each SPED student and his/her family prior to the beginning of the school year. MESA closely monitored each student's progress through ongoing assessments and regularly communicated this progress to students and families. Additional parent engagement opportunities were also provided for families of</p>	<p>As with FRPL-eligible and ELL students, MESA's retention of Students with Disabilities is high. As both students and families are very satisfied with the services provided and the strides the students are making, no substantive changes are planned for the coming year. Should students demonstrate the need for additional services, they will be provided.</p>

Entry 10 - Teacher and Administrator Attrition

Completed Oct 6 2022

Form for "Entry 10 - Teacher and Administrator Attrition" Revised to Employee Fingerprint Requirements Attestation

A. TEACH System - Employee Clearance

Charter schools must ensure that all prospective employees^[1] receive clearance through [the NYSED Office of School Personnel Review and Accountability](#) (OSPRA) prior to employment. **This includes paraprofessionals and other school personnel who are provided or assigned by the district of location, or related/contracted service providers.** After an employee has been cleared, schools are required to maintain proof of such clearance in the file of each employee. For the safety of all students, charter schools must take immediate steps to terminate the employment of individuals who have been denied clearance. Once the employees have been terminated, the school must terminate the request for clearance in the TEACH system.

In the Annual Report, charter schools are asked to confirm that all employees have been cleared through the NYSED TEACH system; and, if denied clearance, confirm that the individual or employee has been removed from the TEACH system, and is not employed by the school.

^[1] Employees who must be cleared include, but are not limited to, teachers, administrative staff, janitors, security personnel and cafeteria workers, and other staff who are present when children are in the school building. **This includes paraprofessionals and other school personnel that are provided or assigned by the district of location, as well as related/contracted service providers.** See NYSED memorandum dated October 1, 2019 at <http://www.nysed.gov/common/nysed/files/programs/charter-schools/employeefingerprintoct19.pdf> or visit the NYSED website at: <http://www.highered.nysed.gov/tsei/ospra/fingerprintingcharts.html> for more information regarding who must be fingerprinted. Also see, 8 NYCRR §87.2.

B. Emergency Conditional Clearances

Emergency Conditional Clearances

Charter schools are **strongly discouraged** from using the emergency conditional clearance provisions for prospective employees. This is because the school must request clearance through NYSED TEACH, and the school's emergency conditional clearance of the employee terminates automatically once the school receives notification from NYSED regarding the clearance request. Status notification is provided for all prospective employees through the NYSED TEACH portal within 48 hours after the clearance request is submitted. Therefore, at most, a school's emergency conditional clearance will be valid for only 48 hours after approval by the board.

Schools are not permitted to renew or in any way re-establish a prospective employee's emergency conditional clearance after status notification is sent by NYSED through the TEACH portal.

Schools are asked to attest that they have reviewed and understand these requirements. More information can be found in the memo at [NYSED CSO Employee Clearance and Fingerprint Memo 10-2019](#).

Attestation

Responses Selected:

I hereby attest that the school has reviewed, understands, and will comply with these requirements.

Entry 11 Percent of Uncertified Teachers

Completed Oct 6 2022

Instructions

Required of Regents, NYCDOE, and Buffalo BOE Authorized Charter Schools ONLY

The table below reflects the information collected through the online portal for compliance with New York State Education Law 2854(3)(a-1) for teaching staff qualifications. Uncertified teachers are those not certified pursuant to the State Certification Requirements established by the NYSED Commissioner of Education.

Enter the relevant full-time equivalent (FTE) count of teachers in each column. For example, a school with 20 full-time teachers and 5 half-time teachers would have an FTE count of 22.5.

Entry 11 Uncertified Teachers

School Name:

Instructions for Reporting Percent of Uncertified Teachers

Required of Regents, NYCDOE, and Buffalo BOE Authorized Charter Schools

The table below reflects the information collected through the online portal for compliance with New York State Education Law 2854(3)(a-1) for teaching staff qualifications. Uncertified teachers are those not certified pursuant to the State Certification Requirements established by the NYSED Commissioner of Education. Enter the relevant full-time equivalent (FTE) count of teachers in each column. For example, a school with 20 full-time teachers and 5 half-time teachers would have an FTE count of 22.5.

If more than one line applies to a teacher, please include in only one FTE uncertified category. Please do not include paraprofessionals, such as teacher aides.

CATEGORY A. 30% OR 5 UNCERTIFIED TEACHERS WHICHEVER IS LESS

	FTE Count
i. FTE count of uncertified teacher with at least three years of elementary, middle or secondary classroom teaching experience (as of June 30, 2022)	5
ii. FTE count of uncertified teachers who are tenured or tenure track college faculty (as of June 30, 2022)	0
iii. FTE count of uncertified teachers with two years of Teach for America experience (as of June 30, 2022)	0
iv. FTE count of uncertified teachers with exceptional business, professional, artistic, athletic, or military experience (as of June 30, 2022)	0
Total Category A: 5 or 30% whichever is less	5.0

CATEGORY B. PLUS FIVE UNCERTIFIED TEACHERS IN MATHEMATICS, SCIENCE, COMPUTER SCIENCE, TECHNOLOGY OR CAREER AND TECHNICAL EDUCATION.

	FTE Count
i. Mathematics	5
ii. Science	0
iii. Computer Science	0
. Technology	0
. Career and Technical Education	0
Total Category B: not to exceed 5	5.0

CATEGORY C: PLUS 5 ADDITIONAL UNCERTIFIED TEACHERS

	FTE Count
i. FTE count of uncertified teacher with at least three years of elementary, middle or secondary classroom teaching experience (as of June 30, 2022)	2
ii. FTE count of uncertified teachers who are tenured or tenure track college faculty (as of June 30, 2022)	0
iii. FTE count of uncertified teachers with two years of Teach for America experience (as of June 30, 2022)	0
. FTE count of uncertified teachers with exceptional business, professional, artistic, athletic, or military experience (as June 30, 2022)	3
Total Category C: not to exceed 5	5.0

TOTAL FTE COUNT OF UNCERTIFIED TEACHERS (Sum of Categories A, B AND C)

(Include teachers who do not fit in one of these categories or if did fit would exceed the numerical limits for that category)

	FTE Count
Total	15

CATEGORY D: TOTAL FTE COUNT OF UNCATEGORIZED, UNCERTIFIED TEACHERS

(Include teachers who do not fit in one of these categories or if did fit would exceed the numerical limits for that category)

	FTE Count
Total Category D	18

CATEGORY E: TOTAL FTE COUNT OF CERTIFIED TEACHERS

	FTE Count
Total Category E	11

CATEGORY F: TOTAL FTE COUNT OF ALL TEACHERS

Please do not include paraprofessionals, such as teacher aides.

	FTE Count
Total Category F	44

Thank you.



Entry 12 Organization Chart

Completed Oct 6 2022

Instructions

Required of Regents, NYCDOE, and Buffalo BOE Authorized Charter Schools ONLY

Upload the 2021-2022 **Organization Chart**. The organization chart should include position titles and reporting relationships. Employee names should **not** appear on the chart.

MESA Org chart for SY 21-22

Filename: MESA Org chart for SY 21 22.pdf **Size:** 94.1 kB

Entry 13 School Calendar

Completed Oct 6 2022

Instructions for submitting School Calendar

Required of ALL Charter Schools

If the charter school has a tentative calendar based on available information and guidance at the time, please submit with the August 1, 2022 submission. Charter schools must upload a final school calendar into the portal and may do so at any time but no later than **September 15, 2022**.

School calendars must meet the [minimum instructional requirements](#) as required of other public schools *"... unless the school's charter requires more instructional time than is required under the regulations."*

Board of Regents-authorized charter schools also are required to submit school calendars that clearly indicate the start and end date of the instructional year AND the number of instructional hours and/or instructional days for each month. See an example of a calendar showing the requested information. Schools are encouraged to use a calendar template and ensure there is a monthly tally of instructional days.

PLEASE NOTE: This is a required task, and it is marked optional for administrative purposes only.

MESA Charter High School 2022- 2023 Calendar v2

Filename: MESA Charter High School 2022 202 LciFoR8.pdf **Size:** 240.6 kB

Entry 14 Links to Critical Documents on School Website

Completed Oct 6 2022

Instructions

Required of ALL Charter Schools noting that SUNY-authorized charter schools are not required to submit item 5: Authorizer-approved DASA policy and NYSED-Approved School Discipline Policy

By law, each charter school is required to maintain certain notices and policies listed on its website. Please insert the [link](#) from the school's website for each of the items:

1. Current Annual Report (i.e., 2021-2022 Annual Report);[\[1\]](#)
2. Board meeting notices, agendas and documents;
3. New York State School Report Card;
4. Authorizer-approved DASA Policy and NYSED-Approved School Discipline Policy **(For Regents, NYCDOE, and Buffalo BOE-Authorized Charter Schools ONLY)**;

5. District-wide safety plan, not a building level safety plan (as per the September 2021 [Emergency Response Plan Memo](#));
6. Authorizer-approved FOIL Policy; and
7. Subject matter list of FOIL records. (Example: See [NYSED Subject Matter List](#))

[1] Each charter school is required to make the Annual Report publicly available by August 1 and to post on their respective charter school website. Each school should post an updated and complete version to include accountability data and financial statements that are not or may not be available until after the August deadline (i.e., Repost when financials have been submitted in November.)

Form for Entry 14 Links to Critical Documents on School Website

School Name: Math, Engineering, and Science Academy Charter High School

Required of ALL Charter Schools noting that SUNY-authorized charter schools are not required to submit item 4: Authorizer-approved DASA policy and NYSED-Approved School Discipline Policy

By law, each charter school is required to maintain certain notices and policies listed on its website. Please insert the link from the school’s website for each of the items:

	Link to Documents
1. Current Annual Report (i.e., 2021-2022 Annual Report)	https://www.mesacharter.org/apps/pages/index.jsp?uREC_ID=1129923&type=d&pREC_ID=2209852
2. Board meeting notices, agendas and documents	https://www.mesacharter.org/apps/pages/index.jsp?uREC_ID=1129414&type=d&pREC_ID=1399948
3. New York State School Report Card	https://data.nysed.gov/essa.php?year=2021&instid=800000076137
4. Authorizer-approved DASA Policy and NYSED-Approved School Discipline Policy (For Regents, NYCDOE, and Buffalo BOE-Authorized Charter Schools ONLY)	https://4.files.edl.io/6865/09/14/19/001146-9bf26b3e-294b-41b7-8202-d83422e1ec8f.pdf
5. District-wide safety plan, not a building level safety plan (as per the September 2021 Emergency Response Plan Memo	https://4.files.edl.io/92e1/03/29/22/215008-d5d5ac0e-e28d-48c0-966f-41b5bc9b9210.pdf
6. Authorizer-approved FOIL Policy	https://4.files.edl.io/d865/07/16/20/144634-ef781aa5-93d1-4235-b8e8-01c21b7cbc2d.pdf
7. Subject matter list of FOIL records. (Example: See NYSED Subject Matter List)	https://4.files.edl.io/fee8/07/30/20/150713-ce4b6292-a3ca-4366-bfad-b0ef22050b7a.pdf

Thank you.



**Math, Engineering, and Science Academy (MESA)
Charter High School**

Financial Statements

June 30, 2022 and 2021

Financial Statements and
Uniform Guidance Schedules
Together With Independent Auditors' Report

June 30, 2022 and 2021

TABLE OF CONTENTS	Page
Independent Auditors' Report	
FINANCIAL STATEMENTS	
Statements of Financial Position	4
Statements of Activities	5
Statements of Functional Expenses	7
Statements of Cash Flows	9
Notes to Financial Statements	10
UNIFORM GUIDANCE SCHEDULES AND REPORTS	
Schedule of Expenditures of Federal Awards	17
Notes to Schedule of Expenditures of Federal Awards	18
Report on Internal Control Over Financial Reporting and on Compliance and Other Matters Based on an Audit of Financial Statements Performed in Accordance With <i>Government Auditing Standards</i>	
Report on Compliance for Each Major Federal Program and Report on Internal Control Over Compliance Required by the Uniform Guidance	
Schedule of Findings and Questioned Costs	24

Independent Auditors' Report

Board of Trustees
Math, Engineering, and Science Academy (MESA)
Charter High School

Report on the Audit of the Financial Statements

Opinion

We have audited the accompanying financial statements of Math, Engineering, and Science Academy (MESA) Charter High School (a nonprofit organization), which comprise the statements of financial position as of June 30, 2022 and 2021, and the related statements of activities, functional expenses and cash flows for the years then ended, and the related notes to the financial statements.

In our opinion, the financial statements referred to above present fairly, in all material respects, the financial position of MESA Charter High School as of June 30, 2022 and 2021, and the changes in its net assets and its cash flows for the years then ended in accordance with accounting principles generally accepted in the United States of America.

Basis for Opinion

We conducted our audits in accordance with auditing standards generally accepted in the United States of America and the standards applicable to financial audits contained in *Government Auditing Standards*, issued by the Comptroller General of the United States. Our responsibilities under those standards are further described in the Auditors' Responsibilities for the Audit of the Financial Statements section of our report. We are required to be independent of MESA Charter High School and to meet our other ethical responsibilities, in accordance with the relevant ethical requirements relating to our audits. We believe that the audit evidence we have obtained is sufficient and appropriate to provide a basis for our audit opinions.

Responsibilities of Management for the Financial Statements

Management is responsible for the preparation and fair presentation of the financial statements in accordance with accounting principles generally accepted in the United States of America, and for the design, implementation, and maintenance of internal control relevant to the preparation and fair presentation of financial statements that are free from material misstatement, whether due to fraud or error.

In preparing the financial statements, management is required to evaluate whether there are conditions or events, considered in the aggregate, that raise substantial doubt about the School's ability to continue as a going concern within one year after the date that the financial statements are available to be issued.

Auditors' Responsibilities for the Audit of the Financial Statements

Our objectives are to obtain reasonable assurance about whether the financial statements as a whole are free from material misstatement, whether due to fraud or error, and to issue an auditors' report that includes our opinion. Reasonable assurance is a high level of assurance but is not absolute assurance and therefore is not a guarantee that an audit conducted in accordance with generally accepted auditing standards and *Government Auditing Standards* will always detect a material misstatement when it exists. The risk of not detecting a material misstatement resulting from fraud is higher than for one resulting from error, as fraud may involve collusion, forgery, intentional omissions, misrepresentations, or the override of internal control. Misstatements are considered material if there is a substantial likelihood that, individually or in the aggregate, they would influence the judgment made by a reasonable user based on the financial statements.

In performing an audit in accordance with generally accepted auditing standards and *Government Auditing Standards*, we:

- Exercise professional judgment and maintain professional skepticism throughout the audit.
- Identify and assess the risks of material misstatement of the financial statements, whether due to fraud or error, and design and perform audit procedures responsive to those risks. Such procedures include examining, on a test basis, evidence regarding the amounts and disclosures in the financial statements.
- Obtain an understanding of internal control relevant to the audit in order to design audit procedures that are appropriate in the circumstances, but not for the purpose of expressing an opinion on the effectiveness of MESA Charter High School's internal control. Accordingly, no such opinion is expressed.
- Evaluate the appropriateness of accounting policies used and the reasonableness of significant accounting estimates made by management, as well as evaluate the overall presentation of the financial statements.
- Conclude whether, in our judgment, there are conditions or events, considered in the aggregate, that raise substantial doubt about MESA Charter High School's ability to continue as a going concern for a reasonable period of time.

We are required to communicate with those charged with governance regarding, among other matters, the planned scope and timing of the audit, significant audit findings, and certain internal control related matters that we identified during the audit.

Report on Supplementary Information

Our audits were conducted for the purpose of forming an opinion on the financial statements as a whole. The accompanying schedule of expenditures of federal awards, as required by Title 2 U.S. Code of Federal Regulations Part 200, *Uniform Administrative Requirements, Cost Principles, and Audit Requirements for Federal Awards*, is presented for purposes of additional analysis and is not a required part of the financial statements. Such information is the responsibility of management and was derived from and relates directly to the underlying accounting and other records used to prepare the financial statements. The information has been subjected to the auditing procedures applied in the audit of the financial statements and certain additional procedures, including comparing and reconciling such information directly to the underlying accounting and other records used to prepare the financial statements or to the financial statements themselves, and other additional procedures in accordance with auditing standards generally accepted in the United States of America. In our opinion, the information is fairly stated in all material respects in relation to the financial statements as a whole

Other Reporting Required by Government Auditing Standards

In accordance with *Government Auditing Standards*, we have also issued our report dated October 25, 2022, on our consideration of MESA Charter High School's internal control over financial reporting and on our tests of its compliance with certain provisions of laws, regulations, contracts, and grant agreements and other matters. The purpose of that report is solely to describe the scope of our testing of internal control over financial reporting and compliance and the results of that testing, and not to provide an opinion on the effectiveness of MESA Charter High School's internal control over financial reporting or on compliance. That report is an integral part of an audit performed in accordance with *Government Auditing Standards* in considering MESA Charter High School's internal control over financial reporting and compliance.

PKF O'Connor Davies, LLP

Harrison, New York
October 25, 2022

**Math, Engineering, and Science Academy (MESA)
Charter High School**

Statements of Financial Position

	June 30,	
	2022	2021
ASSETS		
Current Assets		
Cash	\$ 5,042,221	\$ 4,563,009
Grants and contracts receivable	1,036,102	248,324
Prepaid expenses and other current assets	54,266	97,336
Total Current Assets	6,132,589	4,908,669
Property and equipment, net	227,682	196,461
Restricted cash	76,858	76,781
	\$ 6,437,129	\$ 5,181,911
 LIABILITIES AND NET ASSETS		
Current Liabilities		
Accounts payable and accrued expenses	\$ 216,861	\$ 130,711
Accrued payroll and payroll taxes	373,695	387,609
Refundable advances	9,045	-
Total Current Liabilities	599,601	518,320
Paycheck Protection Program Loan payable	-	1,138,700
Total Liabilities	599,601	1,657,020
Net assets		
Without donor restrictions	5,830,028	3,499,934
With donor restrictions	7,500	24,957
Total Net Assets	5,837,528	3,524,891
	\$ 6,437,129	\$ 5,181,911

See notes to financial statements

**Math, Engineering, and Science Academy (MESA)
Charter High School**

Statement of Activities
Year Ended June 30, 2022

	<u>Without Donor Restrictions</u>	<u>With Donor Restrictions</u>	<u>Total</u>
REVENUE AND SUPPORT			
State and local per pupil operating revenue	\$ 9,100,763	\$ -	\$ 9,100,763
Federal grants	1,308,708	-	1,308,708
State grants	33,067	-	33,067
Contributions and grants	116,237	223,000	339,237
Other income	25,502	-	25,502
Net assets released from restrictions	<u>240,457</u>	<u>(240,457)</u>	<u>-</u>
Total Revenue and Support	<u>10,824,734</u>	<u>(17,457)</u>	<u>10,807,277</u>
EXPENSES			
Program Services			
Regular education	7,027,037	-	7,027,037
Special education	<u>1,570,314</u>	<u>-</u>	<u>1,570,314</u>
Total Program Services	8,597,351	-	8,597,351
Supporting Services			
Management and general	936,418	-	936,418
Fundraising	<u>99,571</u>	<u>-</u>	<u>99,571</u>
Total Expenses	<u>9,633,340</u>	<u>-</u>	<u>9,633,340</u>
Gain on forgiveness of Paycheck Protection Program loan	<u>1,138,700</u>	<u>-</u>	<u>1,138,700</u>
Change in Net Assets	2,330,094	(17,457)	2,312,637
NET ASSETS			
Beginning of year	<u>3,499,934</u>	<u>24,957</u>	<u>3,524,891</u>
End of year	<u>\$ 5,830,028</u>	<u>\$ 7,500</u>	<u>\$ 5,837,528</u>

See notes to financial statements

**Math, Engineering, and Science Academy (MESA)
Charter High School**

Statement of Activities
Year Ended June 30, 2021

	Without Donor Restrictions	With Donor Restrictions	Total
REVENUE AND SUPPORT			
State and local per pupil operating revenue	\$ 8,829,243	\$ -	\$ 8,829,243
Federal grants	468,026	-	468,026
State grants	39,210	-	39,210
Contributions and grants	110,658	96,404	207,062
Other income	56,370	-	56,370
Net assets released from restrictions	<u>85,247</u>	<u>(85,247)</u>	<u>-</u>
Total Revenue and Support	<u>9,588,754</u>	<u>11,157</u>	<u>9,599,911</u>
EXPENSES			
Program Services			
Regular education	6,509,722	-	6,509,722
Special education	<u>1,297,303</u>	<u>-</u>	<u>1,297,303</u>
Total Program Services	7,807,025	-	7,807,025
Supporting Services			
Management and general	767,972	-	767,972
Fundraising	<u>53,017</u>	<u>-</u>	<u>53,017</u>
Total Expenses	<u>8,628,014</u>	<u>-</u>	<u>8,628,014</u>
Change in Net Assets	960,740	11,157	971,897
NET ASSETS			
Beginning of year	<u>2,539,194</u>	<u>13,800</u>	<u>2,552,994</u>
End of year	<u>\$ 3,499,934</u>	<u>\$ 24,957</u>	<u>\$ 3,524,891</u>

See notes to financial statements

**Math, Engineering, and Science Academy (MESA)
Charter High School**

Statement of Functional Expenses
Year Ended June 30, 2022

	No. of Positions	Program Services			Supporting Services		
		Regular Education	Special Education	Total	Management and General	Fundraising	Total
Personnel Services Costs							
Administrative staff personnel	10	\$ 245,826	\$ 94,983	\$ 340,809	\$ 465,725	\$ 58,479	\$ 865,013
Instructional personnel	63	3,478,012	706,032	4,184,044	-	-	4,184,044
Non-instructional personnel	12	859,390	233,478	1,092,868	14,390	-	1,107,258
Total Personnel Services Costs	85	4,583,228	1,034,493	5,617,721	480,115	58,479	6,156,315
Fringe benefits and payroll taxes							
Retirement		1,216,269	275,201	1,491,470	129,204	15,737	1,636,411
Legal services		131,866	29,837	161,703	14,007	1,706	177,416
Accounting / audit services		-	-	-	18,448	-	18,448
Other purchased / professional / consulting services		-	-	-	39,250	-	39,250
Repairs and maintenance		86,499	16,292	102,791	179,370	15,563	297,724
Insurance		8,013	1,813	9,826	852	104	10,782
Supplies / materials		56,594	12,805	69,399	6,013	732	76,144
Non-capitalized equipment / furnishings		457,507	90,049	547,556	18,432	902	566,890
Staff / professional development		11,592	2,344	13,936	487	60	14,483
Student and staff recruitment		107,449	24,312	131,761	11,414	1,390	144,565
Technology		45,850	10,272	56,122	4,600	560	61,282
Office expense		147,627	33,403	181,030	15,682	1,910	198,622
Depreciation and amortization		69,195	15,656	84,851	7,350	894	93,095
Other		104,839	23,722	128,561	11,137	1,357	141,055
		509	115	624	57	177	858
Total Expenses		\$ 7,027,037	\$ 1,570,314	\$ 8,597,351	\$ 936,418	\$ 99,571	\$ 9,633,340

See notes to financial statements

**Math, Engineering, and Science Academy (MESA)
Charter High School**

Statement of Functional Expenses
Year Ended June 30, 2021

	No. of Positions	Program Services			Supporting Services		
		Regular Education	Special Education	Total	Management and General	Fundraising	Total
Personnel Services Costs							
Administrative staff personnel	8	\$ 250,433	\$ 90,118	\$ 340,551	\$ 356,825	\$ 36,847	\$ 734,223
Instructional personnel	58	3,658,190	602,917	4,261,107	-	-	4,261,107
Non-instructional personnel	10	558,430	204,505	762,935	19,085	192	782,212
Total Personnel Services Costs	<u>76</u>	<u>4,467,053</u>	<u>897,540</u>	<u>5,364,593</u>	<u>375,910</u>	<u>37,039</u>	<u>5,777,542</u>
Fringe benefits and payroll taxes		1,241,615	249,471	1,491,086	104,483	10,295	1,605,864
Retirement		145,244	29,183	174,427	12,223	1,204	187,854
Legal services		4,569	918	5,487	23,194	38	28,719
Accounting / audit services		-	-	-	31,750	-	31,750
Other purchased / professional / consulting services		35,420	5,784	41,204	184,013	157	225,374
Insurance		53,651	10,780	64,431	4,515	445	69,391
Supplies / materials		214,659	33,200	247,859	2,697	266	250,822
Non-capitalized equipment / furnishings		919	185	1,104	77	8	1,189
Staff / professional development		7,285	2,208	9,493	772	773	11,038
Student and staff recruitment		16,610	3,197	19,807	1,186	117	21,110
Technology		157,424	31,630	189,054	13,246	1,305	203,605
Office expense		22,814	4,584	27,398	1,919	189	29,506
Depreciation and amortization		132,285	26,579	158,864	11,132	1,097	171,093
Other		10,174	2,044	12,218	855	84	13,157
Total Expenses		<u>\$ 6,509,722</u>	<u>\$ 1,297,303</u>	<u>\$ 7,807,025</u>	<u>\$ 767,972</u>	<u>\$ 53,017</u>	<u>\$ 8,628,014</u>

See notes to financial statements

**Math, Engineering, and Science Academy (MESA)
Charter High School**

Statements of Cash Flows

	Year Ended June 30,	
	2022	2021
CASH FLOWS FROM OPERATING ACTIVITIES		
Change in net assets	\$ 2,312,637	\$ 971,897
Adjustments to reconcile change in net assets to net cash from operating activities		
Depreciation and amortization	141,055	171,093
Gain on forgiveness of Paycheck Protection Program loan	(1,138,700)	-
Changes in operating assets and liabilities		
Grants and contracts receivable	(787,778)	87,372
Prepaid expenses and other current assets	43,070	(53,303)
Accounts payable and accrued expenses	86,150	(10,709)
Accrued payroll and payroll taxes	(13,914)	(165,585)
Refundable advances	9,045	-
Net Cash from Operating Activities	651,565	1,000,765
 CASH FLOWS FROM INVESTING ACTIVITIES		
Purchase of property and equipment	(172,276)	(17,493)
Net Change in Cash and Restricted Cash	479,289	983,272
 CASH AND RESTRICTED CASH		
Beginning of year	4,639,790	3,656,518
End of year	\$ 5,119,079	\$ 4,639,790

See notes to financial statements

**Math, Engineering, and Science Academy (MESA)
Charter High School**

Notes to Financial Statements
June 30, 2022 and 2021

1. Organization and Tax Status

Math, Engineering, and Science Academy (MESA) Charter High School (the “School”) is a New York State, not-for-profit educational corporation that was incorporated to operate a Charter School pursuant to Article 56 of the Education Law of the State of New York. The School was granted a provisional charter on December 11, 2012 valid for a term of five years and renewable upon expiration by the Board of Regents of the University of the State of New York. On March 12, 2018, the charter was renewed for an additional five years expiring on June 30, 2023. The School’s mission is to provide ninth to twelfth grade students with a rigorous education that equips each student with the ability to succeed in life and in college. The School serves students living in Bushwick and the surrounding communities in Brooklyn. Classes commenced in August 2013 and the School provided education to approximately 489 students in the ninth through twelfth grades during the 2021-2022 academic year.

The School has an agreement with the New York City Department of Education (“NYCDOE”) to share public school space at no annual cost. The School occupies approximately 20,880 square feet on two floors of a public school building. The School also shares the gymnasium, auditorium and cafeteria with two public schools, of which the School’s share is approximately 11,000 square feet. The School is not responsible for rent, utilities, custodial services, and school safety services other than those required for days and times the School operates outside of the traditional NYCDOE schedule. The School was unable to determine a value for the contributed space and related services and did not record any value for use of donated facilities and services.

The New York City Department of Education provides free lunches directly to some of the School’s students. Such costs are not included in these financial statements. The School covers the cost of lunches for children not entitled to the free lunches. The Office of Pupil Transportation provides free transportation to some of the students.

Except for taxes that may be due for unrelated business income, the School is exempt from federal income taxes under Section 501(c)(3) of the Internal Revenue Code and from state and local income taxes under comparable laws.

2. Summary of Significant Accounting Policies

Basis of Presentation and Use of Estimates

The accompanying financial statements have been prepared in accordance with accounting principles generally accepted in the United States of America (“U.S. GAAP”), which requires management to make estimates and assumptions that affect the reported amounts of assets and liabilities and disclosure of contingent assets and liabilities at the date of the financial statements and the reported amounts of revenues and expenses during the reporting period. Accordingly actual results could differ from those estimates.

**Math, Engineering, and Science Academy (MESA)
Charter High School**

Notes to Financial Statements
June 30, 2022 and 2021

2. Summary of Significant Accounting Policies (continued)

Net Assets Presentation

Resources for various purposes are classified for accounting and reporting purposes into net asset categories established according to nature and purpose as follows:

Net Assets Without Donor Restrictions – Net assets available for use in general support of the School’s operations and not subject to donor or grantor restrictions. Net assets without donor restrictions may be used at the discretion of the School’s management and Board of Trustees.

Net Assets With Donor Restrictions – Net assets subject to donor or grantor imposed restrictions for specific activities of the School or to be used at some future date. Some donor-imposed restrictions are temporary in nature, such as those that will be met by the passage of time or other events specified by the donor. Other donor-imposed restrictions are perpetual in nature, where the donor stipulates that resources be maintained in perpetuity. Donor-imposed restrictions are released when a restriction expires, that is, when the stipulated time has elapsed, when the stipulated purpose for which the resource was restricted has been fulfilled, or both.

Restricted Cash

Under the provisions of its charter, the School established an escrow account to pay for legal and audit expenses that would be associated with a dissolution, should it occur.

The following table provides a reconciliation of cash and restricted cash reported within the statements of financial position to the amounts presented in the statements of cash flows for the years ended June 30:

	<u>2022</u>	<u>2021</u>
Cash	\$ 5,042,221	\$ 4,563,009
Restricted cash	<u>76,858</u>	<u>76,781</u>
	<u>\$ 5,119,079</u>	<u>\$ 4,639,790</u>

Property and Equipment

The School follows the practice of capitalizing all expenditures for property and equipment with costs in excess of \$1,000. Leasehold improvements are amortized over the shorter of the term of the lease, inclusive of all renewal periods, which are reasonably assured, or the estimated useful life of the asset which is three to five years. Purchased property and equipment are recorded at cost at the date of acquisition. Minor costs of maintenance and repairs are expensed as incurred. All property and equipment purchased with government funding is capitalized, unless the government agency retains legal title to such assets, in which case it is expensed as incurred.

**Math, Engineering, and Science Academy (MESA)
Charter High School**

Notes to Financial Statements
June 30, 2022 and 2021

2. Summary of Significant Accounting Policies (continued)

Property and Equipment (continued)

Depreciation and amortization is recognized on the straight-line method over the estimated useful lives of such assets as follows:

Computers	3 years
Equipment	5 years
Furniture and fixtures	7 years
Software	3 years

Property and equipment are reviewed for impairment if the use of the asset significantly changes or another indicator of possible impairment is identified. If the carrying amount for the asset is not recoverable, the asset is written down to its fair value. There were no asset impairments for the years ended June 30, 2022 and 2021.

Refundable Advances

The School records certain government operating revenue as refundable advances until related services are performed, at which time they are recognized as revenue.

Revenue and Support

Revenue from the state and local governments resulting from the School's charter status and based on the number of students enrolled is recorded when services are performed in accordance with the charter agreement. Federal and other state and local funds are recorded when expenditures are incurred and billable to the government agency.

Contributions are recognized when the donor makes a promise to give to the School that is, in substance, unconditional. Grants and other contributions of cash are reported as net assets with donor restrictions if they are received with donor stipulations. Restricted contributions and grants that are made to support the School's current year activities are recorded as net assets without donor restrictions. Contributions of assets other than cash are recorded at their estimated fair value at the date of donation.

Functional Expense Allocation

The majority of expenses can generally be directly identified with the program or supporting service to which they relate and are charged accordingly. Other expenses by function have been allocated among program and supporting services classifications on the basis of periodic time and expense studies and other basis as determined by management of the School to be appropriate.

Accounting for Uncertainty in Income Taxes

The School recognizes the effect of income tax positions only if those positions are more likely than not to be sustained. Management has determined that the School had no uncertain tax positions that would require financial statement recognition or disclosure. The School is no longer subject to examinations by the applicable taxing jurisdictions for years prior to June 30, 2019.

**Math, Engineering, and Science Academy (MESA)
Charter High School**

Notes to Financial Statements
June 30, 2022 and 2021

2. Summary of Significant Accounting Policies (continued)

Subsequent Events Evaluation by Management

Management has evaluated subsequent events for disclosure and/or recognition in the financial statements through the date that the financial statements were available to be issued, which date is October 25, 2022.

3. Grants and Contracts Receivable

Grants and contracts receivable consist of federal, state, city entitlements and grants. The School expects to collect these receivables within one year. Management has assessed the need for an allowance for doubtful accounts and has determined that such an allowance is not necessary.

4. Property and Equipment

Property and equipment, net consisted of the following at June 30:

	2022	2021
Computers	\$ 367,217	\$ 344,874
Equipment	702,275	639,546
Furniture and fixtures	197,139	197,139
Leasehold improvements	142,303	162,089
Software	870	73,947
	<u>1,409,804</u>	<u>1,417,595</u>
Accumulated depreciation and amortization	<u>(1,182,122)</u>	<u>(1,221,134)</u>
	<u>\$ 227,682</u>	<u>\$ 196,461</u>

Assets with a cost basis and accumulated depreciation of \$180,067 and \$61,470 were disposed of during the years ended June 30, 2022 and 2021.

5. Liquidity and Availability of Financial Assets

Financial assets available for general expenditure, that is, without donor or other restrictions limiting their use within one year of the statement of financial position date, are comprised of the following at June 30:

**Math, Engineering, and Science Academy (MESA)
Charter High School**

Notes to Financial Statements
June 30, 2022 and 2021

5. Liquidity and Availability of Financial Assets (continued)

	2022	2021
Cash	\$ 5,042,221	\$ 4,563,009
Grants and contracts receivable	1,036,102	248,324
	6,078,323	4,811,333
Less amounts unavailable for general expenditures:		
Net assets with donor restrictions	(7,500)	(24,957)
	\$ 6,070,823	\$ 4,786,376

As part of the School's liquidity management plan, the status of grants and contracts receivable is monitored regularly and any excess cash is invested in highly liquid instruments until it is required for operational use. The School will continue to rely on funding received from the New York City Department of Education to cover its future operating costs (see Note 9).

6. Net Assets With Donor Restrictions

Net assets with donor restrictions consisted of the following at June 30:

	2022	2021
COVID-19 emergency relief	\$ -	\$ 14,000
CLEP programming	-	10,957
Opportunity network	7,500	-
	\$ 7,500	\$ 24,957

Following are net assets released from donor restrictions by satisfying the purpose specified by the donor for the years ended June 30:

	2022	2021
COVID-19 emergency relief	\$ 14,000	\$ 49,704
COVID-19 education research and intervention initiative	-	25,000
CLEP programming	10,957	5,543
Building biodiversity with bioinformatics project	-	5,000
Opportunity network	62,500	-
Tutoring and mentoring program	25,000	-
13th grade initiative and pilot programming	125,000	-
Fellowship program	3,000	-
	\$ 240,457	\$ 85,247

**Math, Engineering, and Science Academy (MESA)
Charter High School**

Notes to Financial Statements
June 30, 2022 and 2021

7. Paycheck Protection Program Loan Payable

On April 15, 2020, the School qualified for and received a loan pursuant to the Paycheck Protection Program ("PPP"), a program implemented by the U.S. Small Business Administration ("SBA") under the Coronavirus Aid, Relief, and Economic Security Act ("CARES Act"), from a qualified PPP lender, for an aggregate principal and interest amount of \$1,138,700 (the "PPP Loan"). The PPP Loan bore interest at a fixed rate of 1.0% per annum, with the first six months of interest deferred, had a term of five years, and was unsecured and guaranteed by the SBA. The principal amount of the PPP Loan was subject to forgiveness under the PPP upon the School's request to the extent that the PPP Loan proceeds were used to pay expenses permitted by the PPP, including payroll costs, covered rent and mortgage obligations, and covered utility payments incurred by the School. The School applied for full forgiveness of the PPP Loan with respect to these covered expenses. On July 1, 2021, the PPP Loan was forgiven in full by the SBA. The loan forgiveness of \$1,138,700 is included on the accompanying statement of activities under gain of forgiveness of Paycheck Protection Program loan.

8. Concentration of Credit Risk

Financial instruments that potentially subject the School to concentrations of credit and market risk consist principally of cash on deposit with financial institutions, which from time to time may exceed the Federal Deposit Insurance Corporation ("FDIC") limit. The School does not believe that a significant risk of loss due to the failure of a financial institution presently exists. As of June 30, 2022 and 2021, approximately \$4,900,000 and \$4,400,000 of cash was maintained with an institution in excess of FDIC limits.

9. Concentration of Revenue and Support

The School receives a substantial portion of its revenue and support from the New York City Department of Education. For the years ended June 30, 2022 and 2021, the School received approximately 76% and 92% of its total revenue and support from the New York City Department of Education. If the charter school laws were modified, reducing or eliminating these revenues, the School's finances could be materially adversely affected.

10. Employee Benefit Plan

The School maintains a pension plan qualified under Internal Revenue Code 401(k), for the benefit of its eligible employees. Under the plan, the School matched up to 4% of the employees' salary. Total employer match for the years ended June 30, 2022 and 2021 amounted to \$170,184 and \$181,354.

11. Contingency

Certain grants and contracts may be subject to audit by the funding sources. Such audits might result in disallowances of costs submitted for reimbursement. Management is of the opinion that such cost disallowances, if any, will not have a material effect on the accompanying financial statements. Accordingly, no amounts have been provided in the accompanying financial statements for such potential claims.

**Math, Engineering, and Science Academy (MESA)
Charter High School**

Notes to Financial Statements
June 30, 2022 and 2021

12. Risks and Uncertainties

The School's operations and financial performance may be affected by the recent COVID-19 outbreak which has spread globally and is expected to adversely affect economic conditions throughout the world. If the outbreak continues and conditions worsen, the School may experience a disruption in operations as well as a decline in revenue activities. Economic uncertainty is related to the potential reduction and/or delays in state and local per pupil operating revenue, shortfalls and variations in enrollment, and operational and other changes that could increase expenses. The outbreak may adversely affect the School's activities, financial condition, results of operations, and cash flows. Management is closely monitoring the impact of COVID-19 and believes the School is taking appropriate actions to mitigate the negative impact. However, management is unable to estimate the financial impact, if any, related to this matter.

* * * * *

**Math, Engineering, and Science Academy (MESA)
Charter High School**

Uniform Guidance
Schedules and Reports

June 30, 2022

Math, Engineering, and Science Academy (MESA) Charter High School

Schedule of Expenditures of Federal Awards
Year Ended June 30, 2022

Federal Grantor/Pass-Through Grantor/ Program or Cluster Title	Federal Assistance Listing Number	Pass-Through Entity Identifying Number	Provided to Subrecipients	Total Federal Expenditures
<u>U.S. Department of Education</u>				
Pass-Through New York State Education Department:				
Title I Grants to Local Educational Agencies	84.010	0021225005	\$ -	\$ 178,002
English Language Acquisition State Grants	84.365	0293225005	-	10,184
Supporting Effective Instruction State Grants (Formerly Improving Teacher Quality State Grants)	84.367	0147225005	-	26,778
Student Support and Academic Enrichment Program Education Stabilization Fund/Elementary and Secondary School Emergency Relief Fund II	84.424	0204225005	-	13,287
Education Stabilization Fund/Elementary and Secondary School Emergency Relief Fund II	84.425D	5891215005	-	341,587
Secondary School Emergency Relief Fund ARP	84.425U	5880215005	-	619,505
Total U.S. Department of Education			-	<u>1,189,343</u>
Total Expenditures of Federal Awards			-	<u>\$ 1,189,343</u>

See independent auditors' report and notes to schedule of expenditures of federal awards

Math, Engineering, and Science Academy (MESA) Charter High School

Notes to Schedule of Expenditures of Federal Awards
Year Ended June 30, 2022

1. Basis of Presentation

The accompanying schedule of expenditures of federal awards (the "Schedule") includes the federal award activity of Math, Engineering, and Science Academy (MESA) Charter High School (the "School"), under programs of the federal government for the year ended June 30, 2022. The information in this Schedule is presented in accordance with the requirements of Title 2 U.S. *Code of Federal Regulations Part 200, Uniform Administrative Requirements, Cost Principles, and Audit Requirements for Federal Awards* ("Uniform Guidance"). Because the Schedule presents only a selected portion of the operations of the School, it is not intended to and does not present the financial position, changes in net assets or cash flows of the School.

2. Summary of Significant Accounting Policies

Expenditures reported on the Schedule are reported on the accrual basis of accounting. Such expenditures are recognized following the cost principles contained in the Uniform Guidance, wherein certain types of expenditures are not allowable or are limited as to reimbursement.

3. Indirect Cost Rate

The School has elected not to use the 10-percent de minimis indirect cost rate allowed under the Uniform Guidance.

Report on Internal Control Over Financial Reporting and on Compliance and Other Matters Based on an Audit of Financial Statements Performed in Accordance With Government Auditing Standards

Independent Auditors' Report

**Board of Trustees
Math, Engineering, and Science Academy (MESA) Charter High School**

We have audited, in accordance with the auditing standards generally accepted in the United States of America and the standards applicable to financial audits contained in *Government Auditing Standards* issued by the Comptroller General of the United States, the financial statements of Math, Engineering, and Science Academy (MESA) Charter High School (the "School") (a nonprofit organization), which comprise the statement of financial position as of June 30, 2022, and the related statements of activities, functional expenses, and cash flows for the year then ended, and the related notes to the financial statements, and have issued our report thereon dated October 25, 2022.

Report on Internal Control Over Financial Reporting

In planning and performing our audit of the financial statements, we considered the School's internal control over financial reporting (internal control) as a basis for designing audit procedures that are appropriate in the circumstances for the purpose of expressing our opinion on the financial statements, but not for the purpose of expressing an opinion on the effectiveness of the School's internal control. Accordingly, we do not express an opinion on the effectiveness of the School's internal control.

A *deficiency in internal control* exists when the design or operation of a control does not allow management or employees, in the normal course of performing their assigned functions, to prevent, or detect and correct, misstatements on a timely basis. A *material weakness* is a deficiency, or a combination of deficiencies, in internal control, such that there is a reasonable possibility that a material misstatement of the entity's financial statements will not be prevented, or detected and corrected, on a timely basis. A *significant deficiency* is a deficiency, or a combination of deficiencies, in internal control that is less severe than a material weakness, yet important enough to merit attention by those charged with governance.

Our consideration of internal control was for the limited purpose described in the first paragraph of this section and was not designed to identify all deficiencies in internal control that might be material weaknesses or significant deficiencies. Given these limitations, during our audit we did not identify any deficiencies in internal control that we consider to be material weaknesses. However, material weaknesses or significant deficiencies may exist that were not identified.

Report on Compliance and Other Matters

As part of obtaining reasonable assurance about whether the School's financial statements are free from material misstatement, we performed tests of its compliance with certain provisions of laws, regulations, contracts, and grant agreements, noncompliance with which could have a direct and material effect on the financial statements. However, providing an opinion on compliance with those provisions was not an objective of our audit, and accordingly, we do not express such an opinion. The results of our tests disclosed no instances of noncompliance or other matters that are required to be reported under *Government Auditing Standards*.

Purpose of this Report

The purpose of this report is solely to describe the scope of our testing of internal control and compliance and the results of that testing, and not to provide an opinion on the effectiveness of the entity's internal control or on compliance. This report is an integral part of an audit performed in accordance with *Government Auditing Standards* in considering the entity's internal control and compliance. Accordingly, this communication is not suitable for any other purpose.

PKF O'Connor Davies, LLP

Harrison, New York
October 25, 2022



**Report on Compliance for Each Major Federal Program and Report on Internal Control
Over Compliance Required by the Uniform Guidance**

Independent Auditors' Report

**Board of Trustees
Math, Engineering, and Science Academy (MESA) Charter High School**

Report on Compliance for Each Major Federal Program

Opinion on Each Major Federal Program

We have audited Math, Engineering, and Science Academy (MESA) Charter High School (the "School") compliance with the types of compliance requirements identified as subject to audit in the OMB *Compliance Supplement* that could have a direct and material effect on each of the School's major federal programs for the year ended June 30, 2022. The School's major federal programs are identified in the summary of auditors' results section of the accompanying schedule of findings and questioned costs.

In our opinion, the School complied, in all material respects, with the types of compliance requirements referred to above that could have a direct and material effect on each of its major federal programs for the year ended June 30, 2022.

Basis for Opinion on Each Major Federal Program

We conducted our audit of compliance in accordance with auditing standards generally accepted in the United States of America; the standards applicable to financial audits contained in *Government Auditing Standards*, issued by the Comptroller General of the United States; and the audit requirements of Title 2 U.S. *Code of Federal Regulations* Part 200, *Uniform Administrative Requirements, Cost Principles, and Audit Requirements for Federal Awards* (Uniform Guidance). Our responsibilities under those standards and the Uniform Guidance are further described in the Auditors' Responsibilities for the Audit of Compliance section of our report.

We are required to be independent of the School and to meet our other ethical responsibilities, in accordance with relevant ethical requirements relating to our audit. We believe that the audit evidence we have obtained is sufficient and appropriate to provide a basis for our opinion on compliance for each major federal program. Our audit does not provide a legal determination of the School's compliance with the compliance requirements referred to above.

Responsibilities of Management for Compliance

Management is responsible for compliance with the requirements referred to above and for the design, implementation, and maintenance of effective internal control over compliance with the requirements of laws, statutes, regulations, rules, and provisions of contracts or grant agreements applicable to the School's federal programs.

Auditors' Responsibilities for the Audit of Compliance

Our objectives are to obtain reasonable assurance about whether material noncompliance with the compliance requirements referred to above occurred, whether due to fraud or error, and express an opinion on the School's compliance based on our audit. Reasonable assurance is a high level of assurance but is not absolute assurance and therefore is not a guarantee that an audit conducted in accordance with generally accepted auditing standards, *Government Auditing Standards*, and the Uniform Guidance will always detect material noncompliance when it exists. The risk of not detecting material noncompliance resulting from fraud is higher than for that resulting from error, as fraud may involve collusion, forgery, intentional omissions, misrepresentations, or the override of internal control. Noncompliance with the compliance requirements referred to above is considered material if there is a substantial likelihood that, individually or in the aggregate, it would influence the judgment made by a reasonable user of the report on compliance about the School's compliance with the requirements of each major federal program as a whole.

In performing an audit in accordance with generally accepted auditing standards, *Government Auditing Standards*, and the Uniform Guidance, we:

- Exercise professional judgment and maintain professional skepticism throughout the audit.
- Identify and assess the risks of material noncompliance, whether due to fraud or error, and design and perform audit procedures responsive to those risks. Such procedures include examining, on a test basis, evidence regarding the School's compliance with the compliance requirements referred to above and performing such other procedures as we considered necessary in the circumstances.
- Obtain an understanding of the School's internal control over compliance relevant to the audit in order to design audit procedures that are appropriate in the circumstances and to test and report on internal control over compliance in accordance with the Uniform Guidance, but not for the purpose of expressing an opinion on the effectiveness of the School's internal control over compliance. Accordingly, no such opinion is expressed.

We are required to communicate with those charged with governance regarding, among other matters, the planned scope and timing of the audit and any significant deficiencies and material weaknesses in internal control over compliance that we identified during the audit.

Report on Internal Control Over Compliance

A deficiency in internal control over compliance exists when the design or operation of a control over compliance does not allow management or employees, in the normal course of performing their assigned functions, to prevent, or detect and correct, noncompliance with a type of compliance requirement of a federal program on a timely basis. A *material weakness in internal control over compliance* is a deficiency, or a combination of deficiencies, in internal control over compliance, such that there is a reasonable possibility that material noncompliance with a type of compliance requirement of a federal program will not be prevented, or detected and corrected, on a timely basis. A *significant deficiency in internal control over compliance* is a deficiency, or a combination of deficiencies, in internal control over compliance with a type of compliance requirement of a federal program that is less severe than a material weakness in internal control over compliance, yet important enough to merit attention by those charged with governance.

Our consideration of internal control over compliance was for the limited purpose described in the Auditors' Responsibilities for the Audit of Compliance section above and was not designed to identify all deficiencies in internal control over compliance that might be material weaknesses or significant deficiencies in internal control over compliance. Given these limitations, during our audit we did not identify any deficiencies in internal control over compliance that we consider to be material weaknesses, as defined above. However, material weaknesses or significant deficiencies in internal control over compliance may exist that were not identified.

Our audit was not designed for the purpose of expressing an opinion on the effectiveness of internal control over compliance. Accordingly, no such opinion is expressed.

The purpose of this report on internal control over compliance is solely to describe the scope of our testing of internal control over compliance and the results of that testing based on the requirements of the Uniform Guidance. Accordingly, this report is not suitable for any other purpose.

PKF O'Connor Davies, LLP

Harrison, New York
October 25, 2022

Math, Engineering, and Science Academy (MESA) Charter High School

Schedule of Findings and Questioned Costs
Year Ended June 30, 2022

Section I - Summary of Auditors' Results

Financial Statements

Type of report the auditor issued on whether the financial statements audited were prepared in accordance with U.S. GAAP:

Unmodified

Internal control over financial reporting:

Material weakness(es) identified?

_____ yes X no

Significant deficiency(ies) identified?

_____ yes X none reported

Noncompliance material to the financial statements noted?

_____ yes X no

Federal Awards

Internal control over major federal programs:

Material weakness(es) identified?

_____ yes X no

Significant deficiency(ies) identified?

_____ yes X none reported

Type of auditors' report issued on compliance for major federal programs:

Unmodified

Any audit findings disclosed that are required to be reported in accordance with 2 CFR 200.516(a)?

_____ yes X no

Identification of major federal programs:

Federal Assistance Listing Number(s)

Name of Federal Program or Cluster

84.425D

Education Stabilization Fund/Elementary and Secondary School Emergency Relief Fund II

84.425U

Education Stabilization Fund/Elementary and Secondary School Emergency Relief Fund ARP

Dollar threshold used to distinguish between Type A and Type B programs:

\$750,000

Auditee qualified as low-risk auditee?

_____ yes X no

Section II – Financial Statement Findings

During our audit, we noted no material findings for the year ended June 30, 2022.

Section III – Federal Award Findings and Questioned Costs

During our audit, we noted no material instance of noncompliance and none of the costs tested which were reported in the federal financially assisted programs are questioned or recommended to be disallowed.

Section IV – Prior Year Findings

There were no findings in the prior year.

Board of Trustees
Math, Engineering, and Science Academy (MESA) Charter High School

Auditors' Communication on Internal Control

In planning and performing our audit of the financial statements of Math, Engineering, and Science Academy (MESA) Charter High School (the "School") as of and for the year ended June 30, 2021, in accordance with auditing standards generally accepted in the United States of America, we considered the Organization's internal control over financial reporting ("internal control") as a basis for designing audit procedures that are appropriate in the circumstances for the purpose of expressing our opinion on the financial statements, but not for the purpose of expressing an opinion on the effectiveness of the Organization's internal control. Accordingly, we do not express an opinion on the effectiveness of the Organization's internal control.

A deficiency in internal control exists when the design or operation of a control does not allow management or employees, in the normal course of performing their assigned functions, to prevent, or detect and correct, misstatements on a timely basis. A material weakness is a deficiency, or combination of deficiencies, in internal control, such that there is a reasonable possibility that a material misstatement of the entity's financial statements will not be prevented, or detected and corrected, on a timely basis.

Our consideration of internal control was for the limited purpose described in the first paragraph and was not designed to identify all deficiencies in internal control that might be deficiencies, significant deficiencies, or material weaknesses and, therefore, there can be no assurance that all such deficiencies have been identified.

We did not identify any deficiencies in internal control that we consider to be material weaknesses, as defined above.

This communication is intended solely for the information and use of management, the audit committee, the Board of Trustees, the State Education Department of the State University of New York, and others within the School and is not intended to be and should not be used by anyone other than these specified parties.

PKF O'Connor Davies, LLP

Harrison, NY
October 25, 2022

Board of Trustees
Math, Engineering, and Science Academy (MESA) Charter High School

Auditors' Communication on Internal Control

In planning and performing our audit of the financial statements of Math, Engineering, and Science Academy (MESA) Charter High School (the "School") as of and for the year ended June 30, 2021, in accordance with auditing standards generally accepted in the United States of America, we considered the Organization's internal control over financial reporting ("internal control") as a basis for designing audit procedures that are appropriate in the circumstances for the purpose of expressing our opinion on the financial statements, but not for the purpose of expressing an opinion on the effectiveness of the Organization's internal control. Accordingly, we do not express an opinion on the effectiveness of the Organization's internal control.

A deficiency in internal control exists when the design or operation of a control does not allow management or employees, in the normal course of performing their assigned functions, to prevent, or detect and correct, misstatements on a timely basis. A material weakness is a deficiency, or combination of deficiencies, in internal control, such that there is a reasonable possibility that a material misstatement of the entity's financial statements will not be prevented, or detected and corrected, on a timely basis.

Our consideration of internal control was for the limited purpose described in the first paragraph and was not designed to identify all deficiencies in internal control that might be deficiencies, significant deficiencies, or material weaknesses and, therefore, there can be no assurance that all such deficiencies have been identified.

We did not identify any deficiencies in internal control that we consider to be material weaknesses, as defined above.

This communication is intended solely for the information and use of management, the audit committee, the Board of Trustees, the State Education Department of the State University of New York, and others within the School and is not intended to be and should not be used by anyone other than these specified parties.

PKF O'Connor Davies, LLP

Harrison, NY
October 25, 2022

MATH ENGINEERING AND SCIENCE ACADEMY
 CHARTER HIGH SCHOOL AKA (MESA)
 231 PALMETTO STREET
 BROOKLYN NY 11221

Speak to a dedicated business solutions expert
 at 1-888-755-2172 — a one-stop number for
 both your business and personal needs.

ACCOUNT SUMMARY FOR PERIOD APRIL 01, 2022 - JUNE 30, 2022

Business Advantage Savings [REDACTED]		MATH ENGINEERING AND SCIENCE ACADEMY	
Previous Balance 03/31/22	\$76,838.69	Number of Days in Cycle	91
0 Deposits/Credits	\$0.00	Minimum Balance This Cycle	\$76,838.69
Interest Paid	\$19.17	Average Collected Balance	\$76,845.07
0 Debits	\$0.00	Interest Earned During this Cycle	\$19.17
Service Charges	\$0.00	Interest Paid Year-To-Date	\$38.11
Ending Balance 06/30/22	\$76,857.86	Annual Percentage Yield (This Statement Period)	0.10%

ACCOUNT DETAIL FOR PERIOD APRIL 01, 2022 - JUNE 30, 2022

Business Advantage Savings [REDACTED]		MATH ENGINEERING AND SCIENCE ACADEMY		
<i>Date</i>	<i>Description</i>	<i>Deposits/Credits</i>	<i>Withdrawals/Debits</i>	<i>Resulting Balance</i>
04/30	Interest paid	\$6.32		\$76,845.01
05/31	Interest paid	\$6.53		\$76,851.54
06/30	Interest paid	\$6.32		\$76,857.86
Total		\$19.17	\$0.00	

Thank you for banking with us.

An Important Message to Our Clients

What should I do if I find an error or problem on my statement?

In case of error or questions about your electronic transfers telephone us at 1-888-755-2172 or write us at Capital One, N.A., 7933 Preston Rd. Plano, Texas 75024, Attn: Customer Service Center as soon as you can, if you think your statement or receipt is wrong or if you need more information about a transfer on the statement or receipt.

For small business accounts: Please refer to your Electronic Fund Transfer Agreement/Disclosure for additional information.

For consumer accounts: We must hear from you no later than 60 days after we sent you the FIRST statement on which the error or problem appeared.

1. Tell us your name and account number (if any).
2. Describe the error or the transfer you are unsure about, and explain as clearly as you can why you believe it is an error or why you need more information.
3. Tell us the dollar amount of the suspected error.

We will investigate your complaint and will correct any error promptly. If we take more than 10 business days to do this, we will credit your account for the amount you think is in error, so that you will have the use of the money during the time it takes us to complete our investigation.



2021-22 Entry 4 C – Explanation for Documents not required

2. Single Audit – Included in MESA’s FY22 Audited Financial Statements

3. CSP Agreed-Upon Procedure Report: A CSP Agreed-Upon Procedure Report was not required because the school did not receive CSP funds in this fiscal year.

5. Corrective Action Plan for Audit Findings and Management Letter Recommendations: Not applicable because there were no findings.

**Disclosure of Financial Interest by a Current
or Former Trustee**

Trustee Name:

Eve Colavito

Name of Charter School Education Corporation:

MESA Charter High School

1. List all positions held on the education corporation Board of Trustees ("Board") (e.g., chair, vice-chair, treasurer, secretary, parent representative, etc.).

2. Are you related, by blood or marriage, to any person employed by the school and/or education corporation?

Yes No

If **Yes**, please describe the nature of your relationship and the person's position, job description, and other responsibilities with the school.

3. Are you related by blood, or marriage, or legal adoption/guardianship to any student currently enrolled in a school operated by the education corporation?

Yes No

If **Yes**, please describe the nature of your relationship and if the student could benefit from your participation.

4. Are you related, by blood or marriage, to any person that could otherwise benefit from your participation as a board member of the education corporation?

Yes No

If **Yes**, please describe the nature of your relationship and if this person could benefit from your participation.

5. Are you a past, current, or prospective employee of the charter school, education corporation, and/or an entity that provides comprehensive management services ("CMO"), whether for-profit or not-for-profit, which contracts, or may contract, with the charter school or education corporation; or do you serve as an employee, officer, or director of, or own a controlling interest in, a business or entity that contracts, or does business with, or plans to contract or do business with, the charter school, education corporation, and/or a CMO, whether for-profit or not-for-profit, including, but not limited to, the lease of real or personal property to the said entities?

Yes No

If **Yes**, please provide a description of the position(s) you hold, your responsibilities, your salary and your start date.

6. Identify each interest/transaction (and provide the requested information) that you, any of your immediate family members, and/or any persons who you reside with have held or engaged in with the charter school(s) operated by the education corporation during the time you have served on the Board, and in the six months prior to such service. If there has been no such interest or transaction, check **None**.

None

Date(s)	Nature of financial interest / transaction	Steps taken to avoid a conflict of interest, (e.g., did not vote, did not participate in discussion)	Name of person holding interest or engaging in transaction and relationship to you

7. Identify each individual, business, corporation, union association, firm, partnership, franchise holding company, joint-stock company, business or real estate trust, non-profit organization, or other organization or group of people doing business with the school(s) operated by the education corporation **and** in which such entity, during the time of your tenure as a trustee, you and/or your immediate family member(s) or person(s) you reside with had a financial interest or other relationship. If you are a member, director, officer, or employee of an organization formally partnered with and/or doing business with the school(s) through a management or services agreement, please identify only the name of the organization, your position in the organization, and the relationship between such organization and the school(s). If there was no financial interest, check **None**.

None

Organization conducting business with the school(s)	Nature of business conducted	Approximate value of the business conducted	Name of Trustee and/or immediate family member of household holding an interest in the organization conducting business with the school(s) and the nature of the interest	Steps taken to avoid conflict of interest

This document is considered a public record and, as such, may be made available to members of the public upon request under the Freedom of Information Law. The personal contact information provided below will be redacted.



Eve Colavito

7/12/22

Signature

Date

Acceptable signature formats include:

- Digitally certified PDF signature
- Print form, manually sign, scan to PDF

last revised 04/2022

**Disclosure of Financial Interest by a Current
or Former Trustee**

Trustee Name:

Adria Martig

Name of Charter School Education Corporation:

MESA Charter Highschool

1. List all positions held on the education corporation Board of Trustees ("Board") (e.g., chair, vice-chair, treasurer, secretary, parent representative, etc.).

Board Trustee

2. Are you related, by blood or marriage, to any person employed by the school and/or education corporation?

Yes No

If **Yes**, please describe the nature of your relationship and the person's position, job description, and other responsibilities with the school.

3. Are you related by blood, or marriage, or legal adoption/guardianship to any student currently enrolled in a school operated by the education corporation?

Yes No

If **Yes**, please describe the nature of your relationship and if the student could benefit from your participation.

4. Are you related, by blood or marriage, to any person that could otherwise benefit from your participation as a board member of the education corporation?

Yes No

If **Yes**, please describe the nature of your relationship and if this person could benefit from your participation.

5. Are you a past, current, or prospective employee of the charter school, education corporation, and/or an entity that provides comprehensive management services ("CMO"), whether for-profit or not-for-profit, which contracts, or may contract, with the charter school or education corporation; or do you serve as an employee, officer, or director of, or own a controlling interest in, a business or entity that contracts, or does business with, or plans to contract or do business with, the charter school, education corporation, and/or a CMO, whether for-profit or not-for-profit, including, but not limited to, the lease of real or personal property to the said entities?

Yes No

If **Yes**, please provide a description of the position(s) you hold, your responsibilities, your salary and your start date.

6. Identify each interest/transaction (and provide the requested information) that you, any of your immediate family members, and/or any persons who you reside with have held or engaged in with the charter school(s) operated by the education corporation during the time you have served on the Board, and in the six months prior to such service. If there has been no such interest or transaction, check **None**.

None


Date(s)	Nature of financial interest / transaction	Steps taken to avoid a conflict of interest, (e.g., did not vote, did not participate in discussion)	Name of person holding interest or engaging in transaction and relationship to you

7. Identify each individual, business, corporation, union association, firm, partnership, franchise holding company, joint-stock company, business or real estate trust, non-profit organization, or other organization or group of people doing business with the school(s) operated by the education corporation **and** in which such entity, during the time of your tenure as a trustee, you and/or your immediate family member(s) or person(s) you reside with had a financial interest or other relationship. If you are a member, director, officer, or employee of an organization formally partnered with and/or doing business with the school(s) through a management or services agreement, please identify only the name of the organization, your position in the organization, and the relationship between such organization and the school(s). If there was no financial interest, check **None**.

None

Organization conducting business with the school(s)	Nature of business conducted	Approximate value of the business conducted	Name of Trustee and/or immediate family member of household holding an interest in the organization conducting business with the school(s) and the nature of the interest	Steps taken to avoid conflict of interest

This document is considered a public record and, as such, may be made available to members of the public upon request under the Freedom of Information Law. The personal contact information provided below will be redacted.



07/12/2022

Signature

Date

Acceptable signature formats include:

- Digitally certified PDF signature
- Print form, manually sign, scan to PDF

last revised 04/2022

**Disclosure of Financial Interest by a Current
or Former Trustee**

Trustee Name:

Chester Mancini

Name of Charter School Education Corporation:

MESA Charter High School

1. List all positions held on the education corporation Board of Trustees ("Board") (e.g., chair, vice-chair, treasurer, secretary, parent representative, etc.).
Secretary

2. Are you related, by blood or marriage, to any person employed by the school and/or education corporation?

Yes No

If **Yes**, please describe the nature of your relationship and the person's position, job description, and other responsibilities with the school.

3. Are you related by blood, or marriage, or legal adoption/guardianship to any student currently enrolled in a school operated by the education corporation?

Yes No

If **Yes**, please describe the nature of your relationship and if the student could benefit from your participation.

4. Are you related, by blood or marriage, to any person that could otherwise benefit from your participation as a board member of the education corporation?

Yes No

If **Yes**, please describe the nature of your relationship and if this person could benefit from your participation.

5. Are you a past, current, or prospective employee of the charter school, education corporation, and/or an entity that provides comprehensive management services ("CMO"), whether for-profit or not-for-profit, which contracts, or may contract, with the charter school or education corporation; or do you serve as an employee, officer, or director of, or own a controlling interest in, a business or entity that contracts, or does business with, or plans to contract or do business with, the charter school, education corporation, and/or a CMO, whether for-profit or not-for-profit, including, but not limited to, the lease of real or personal property to the said entities?

Yes No

If **Yes**, please provide a description of the position(s) you hold, your responsibilities, your salary and your start date.

6. Identify each interest/transaction (and provide the requested information) that you, any of your immediate family members, and/or any persons who you reside with have held or engaged in with the charter school(s) operated by the education corporation during the time you have served on the Board, and in the six months prior to such service. If there has been no such interest or transaction, check **None**.

None

Date(s)	Nature of financial interest / transaction	Steps taken to avoid a conflict of interest, (e.g., did not vote, did not participate in discussion)	Name of person holding interest or engaging in transaction and relationship to you

7. Identify each individual, business, corporation, union association, firm, partnership, franchise holding company, joint-stock company, business or real estate trust, non-profit organization, or other organization or group of people doing business with the school(s) operated by the education corporation **and** in which such entity, during the time of your tenure as a trustee, you and/or your immediate family member(s) or person(s) you reside with had a financial interest or other relationship. If you are a member, director, officer, or employee of an organization formally partnered with and/or doing business with the school(s) through a management or services agreement, please identify only the name of the organization, your position in the organization, and the relationship between such organization and the school(s). If there was no financial interest, check **None**.

None

Organization conducting business with the school(s)	Nature of business conducted	Approximate value of the business conducted	Name of Trustee and/or immediate family member of household holding an interest in the organization conducting business with the school(s) and the nature of the interest	Steps taken to avoid conflict of interest

This document is considered a public record and, as such, may be made available to members of the public upon request under the Freedom of Information Law. The personal contact information provided below will be redacted.

Business Telephone:

5852330724

Business Address:

Carta, 1 World Trade Center, Flr 81, New York, NY 10007

E-mail Address:

chetmancini@gmail.com

Home Telephone:

5852330724

Home Address:

401 W 24th St, 8, New York, NY 10011



07/08/2022

Signature

Date

Acceptable signature formats include:

- Digitally certified PDF signature
- Print form, manually sign, scan to PDF

last revised 04/2022

**Disclosure of Financial Interest by a Current
or Former Trustee**

Trustee Name:

Agatha Patterson

Name of Charter School Education Corporation:

MESA Charter School

1. List all positions held on the education corporation Board of Trustees ("Board") (e.g., chair, vice-chair, treasurer, secretary, parent representative, etc.).

Treasurer

2. Are you related, by blood or marriage, to any person employed by the school and/or education corporation?

Yes No

If **Yes**, please describe the nature of your relationship and the person's position, job description, and other responsibilities with the school.

3. Are you related by blood, or marriage, or legal adoption/guardianship to any student currently enrolled in a school operated by the education corporation?

Yes No

If **Yes**, please describe the nature of your relationship and if the student could benefit from your participation.

4. Are you related, by blood or marriage, to any person that could otherwise benefit from your participation as a board member of the education corporation?

Yes No

If **Yes**, please describe the nature of your relationship and if this person could benefit from your participation.

5. Are you a past, current, or prospective employee of the charter school, education corporation, and/or an entity that provides comprehensive management services ("CMO"), whether for-profit or not-for-profit, which contracts, or may contract, with the charter school or education corporation; or do you serve as an employee, officer, or director of, or own a controlling interest in, a business or entity that contracts, or does business with, or plans to contract or do business with, the charter school, education corporation, and/or a CMO, whether for-profit or not-for-profit, including, but not limited to, the lease of real or personal property to the said entities?

Yes No

If **Yes**, please provide a description of the position(s) you hold, your responsibilities, your salary and your start date.

6. Identify each interest/transaction (and provide the requested information) that you, any of your immediate family members, and/or any persons who you reside with have held or engaged in with the charter school(s) operated by the education corporation during the time you have served on the Board, and in the six months prior to such service. If there has been no such interest or transaction, check **None**.

None

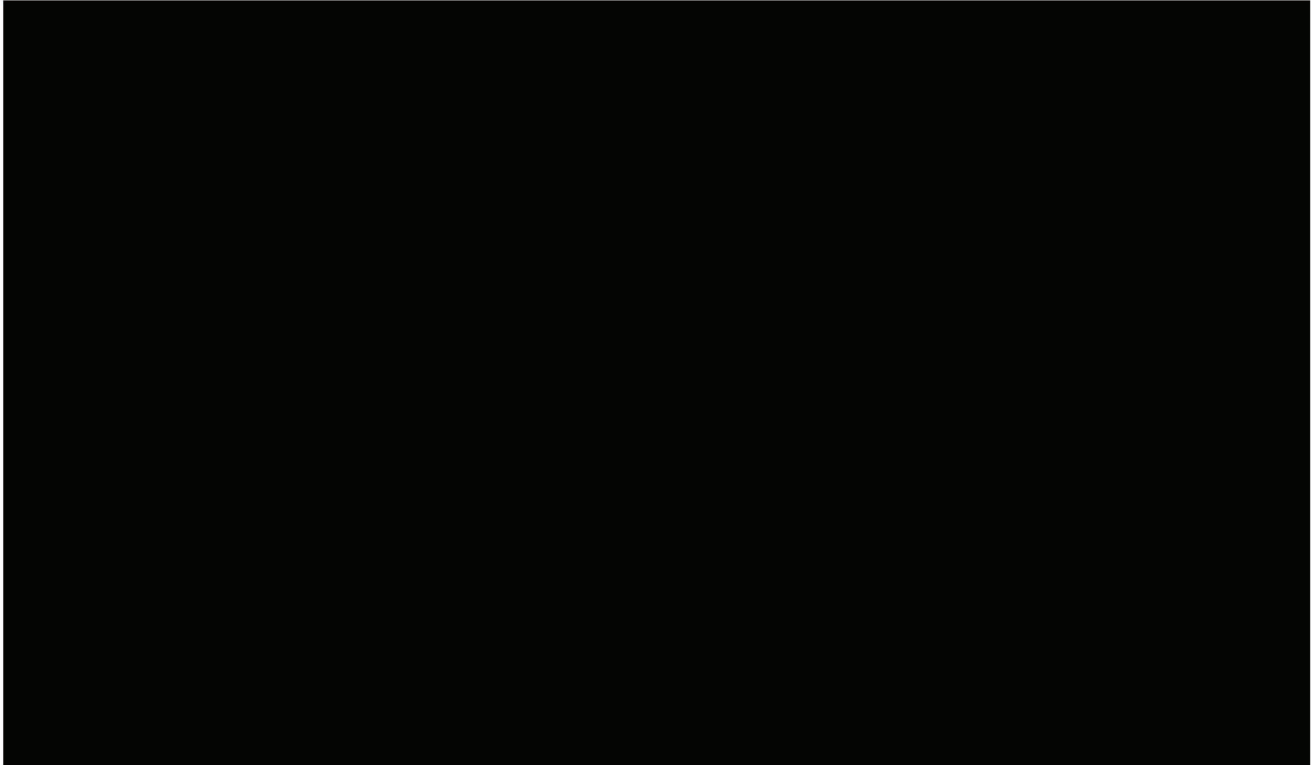
Date(s)	Nature of financial interest / transaction	Steps taken to avoid a conflict of interest, (e.g., did not vote, did not participate in discussion)	Name of person holding interest or engaging in transaction and relationship to you

7. Identify each individual, business, corporation, union association, firm, partnership, franchise holding company, joint-stock company, business or real estate trust, non-profit organization, or other organization or group of people doing business with the school(s) operated by the education corporation **and** in which such entity, during the time of your tenure as a trustee, you and/or your immediate family member(s) or person(s) you reside with had a financial interest or other relationship. If you are a member, director, officer, or employee of an organization formally partnered with and/or doing business with the school(s) through a management or services agreement, please identify only the name of the organization, your position in the organization, and the relationship between such organization and the school(s). If there was no financial interest, check **None**.

None

Organization conducting business with the school(s)	Nature of business conducted	Approximate value of the business conducted	Name of Trustee and/or immediate family member of household holding an interest in the organization conducting business with the school(s) and the nature of the interest	Steps taken to avoid conflict of interest

This document is considered a public record and, as such, may be made available to members of the public upon request under the Freedom of Information Law. The personal contact information provided below will be redacted.



7/24/2022

Signature

Date

Acceptable signature formats include:

- Digitally certified PDF signature
- Print form, manually sign, scan to PDF

last revised 04/2022

**Disclosure of Financial Interest by a Current
or Former Trustee**

Trustee Name:

Name of Charter School Education Corporation:

1. List all positions held on the education corporation Board of Trustees ("Board") (e.g., chair, vice-chair, treasurer, secretary, parent representative, etc.).

2. Are you related, by blood or marriage, to any person employed by the school and/or education corporation?

Yes **No**

If **Yes**, please describe the nature of your relationship and the person's position, job description, and other responsibilities with the school.

3. Are you related by blood, or marriage, or legal adoption/guardianship to any student currently enrolled in a school operated by the education corporation?

Yes **No**

If **Yes**, please describe the nature of your relationship and if the student could benefit from your participation.

-
4. Are you related, by blood or marriage, to any person that could otherwise benefit from your participation as a board member of the education corporation?

Yes No

If **Yes**, please describe the nature of your relationship and if this person could benefit from your participation.

5. Are you a past, current, or prospective employee of the charter school, education corporation, and/or an entity that provides comprehensive management services ("CMO"), whether for-profit or not-for-profit, which contracts, or may contract, with the charter school or education corporation; or do you serve as an employee, officer, or director of, or own a controlling interest in, a business or entity that contracts, or does business with, or plans to contract or do business with, the charter school, education corporation, and/or a CMO, whether for-profit or not-for-profit, including, but not limited to, the lease of real or personal property to the said entities?

Yes No

If **Yes**, please provide a description of the position(s) you hold, your responsibilities, your salary and your start date.

6. Identify each interest/transaction (and provide the requested information) that you, any of your immediate family members, and/or any persons who you reside with have held or engaged in with the charter school(s) operated by the education corporation during the time you have served on the Board, and in the six months prior to such service. If there has been no such interest or transaction, check **None**.

None

Date(s)	Nature of financial interest / transaction	Steps taken to avoid a conflict of interest, (e.g., did not vote, did not participate in discussion)	Name of person holding interest or engaging in transaction and relationship to you

7. Identify each individual, business, corporation, union association, firm, partnership, franchise holding company, joint-stock company, business or real estate trust, non-profit organization, or other organization or group of people doing business with the school(s) operated by the education corporation **and** in which such entity, during the time of your tenure as a trustee, you and/or your immediate family member(s) or person(s) you reside with had a financial interest or other relationship. If you are a member, director, officer, or employee of an organization formally partnered with and/or doing business with the school(s) through a management or services agreement, please identify only the name of the organization, your position in the organization, and the relationship between such organization and the school(s). If there was no financial interest, check **None**.

None

Organization conducting business with the school(s)	Nature of business conducted	Approximate value of the business conducted	Name of Trustee and/or immediate family member of household holding an interest in the organization conducting business with the school(s) and the nature of the interest	Steps taken to avoid conflict of interest

-

This document is considered a public record and, as such, may be made available to members of the public upon request under the Freedom of Information Law. The personal contact information provided below will be redacted.



E-mail Address:

Home Telephone:

Home Address:

Signature

Date

Acceptable signature formats include:

- Digitally certified PDF signature
- Print form, manually sign, scan to PDF

last revised 04/2022

**Disclosure of Financial Interest by a Current
or Former Trustee**

Trustee Name:

Maureen Ryan

Name of Charter School Education Corporation:

MESA Charter High School

1. List all positions held on the education corporation Board of Trustees ("Board") (e.g., chair, vice-chair, treasurer, secretary, parent representative, etc.).

Board Chair for 2021-2022 school year. Regular Board member for the 2022-2023 school year.

2. Are you related, by blood or marriage, to any person employed by the school and/or education corporation?

Yes No

If **Yes**, please describe the nature of your relationship and the person's position, job description, and other responsibilities with the school.

3. Are you related by blood, or marriage, or legal adoption/guardianship to any student currently enrolled in a school operated by the education corporation?

Yes No

If **Yes**, please describe the nature of your relationship and if the student could benefit from your participation.

4. Are you related, by blood or marriage, to any person that could otherwise benefit from your participation as a board member of the education corporation?

Yes No

If **Yes**, please describe the nature of your relationship and if this person could benefit from your participation.

5. Are you a past, current, or prospective employee of the charter school, education corporation, and/or an entity that provides comprehensive management services ("CMO"), whether for-profit or not-for-profit, which contracts, or may contract, with the charter school or education corporation; or do you serve as an employee, officer, or director of, or own a controlling interest in, a business or entity that contracts, or does business with, or plans to contract or do business with, the charter school, education corporation, and/or a CMO, whether for-profit or not-for-profit, including, but not limited to, the lease of real or personal property to the said entities?

Yes No

If **Yes**, please provide a description of the position(s) you hold, your responsibilities, your salary and your start date.

6. Identify each interest/transaction (and provide the requested information) that you, any of your immediate family members, and/or any persons who you reside with have held or engaged in with the charter school(s) operated by the education corporation during the time you have served on the Board, and in the six months prior to such service. If there has been no such interest or transaction, check **None**.

None

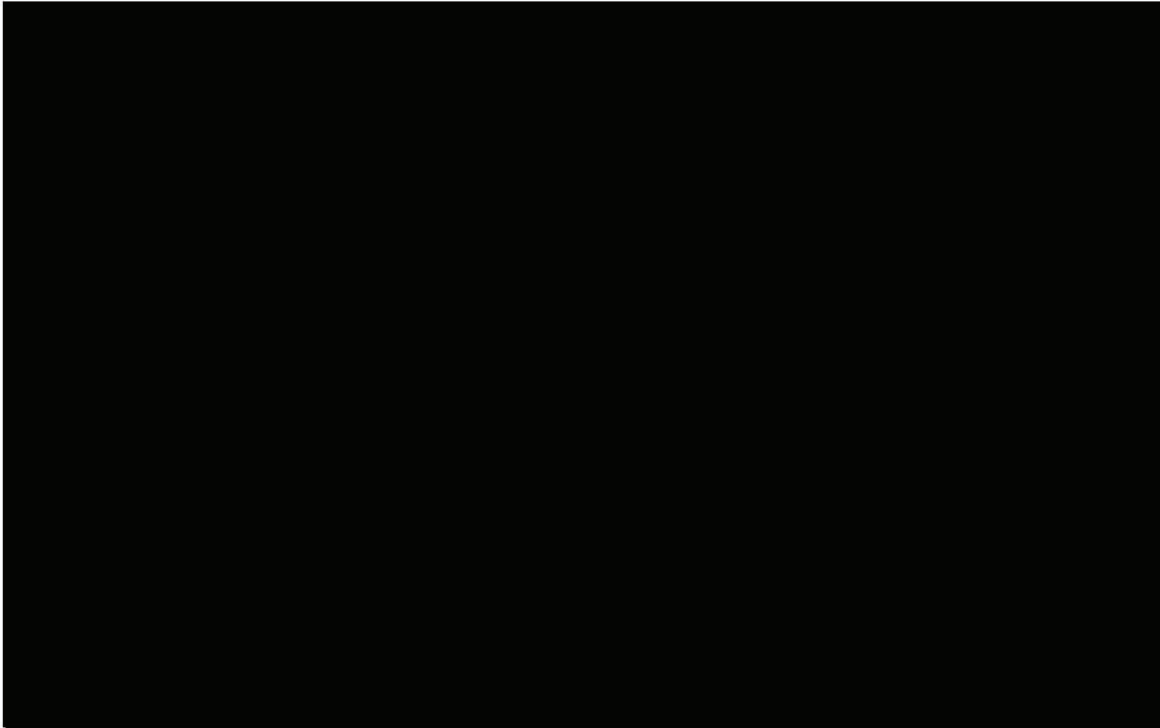
Date(s)	Nature of financial interest / transaction	Steps taken to avoid a conflict of interest, (e.g., did not vote, did not participate in discussion)	Name of person holding interest or engaging in transaction and relationship to you

7. Identify each individual, business, corporation, union association, firm, partnership, franchise holding company, joint-stock company, business or real estate trust, non-profit organization, or other organization or group of people doing business with the school(s) operated by the education corporation **and** in which such entity, during the time of your tenure as a trustee, you and/or your immediate family member(s) or person(s) you reside with had a financial interest or other relationship. If you are a member, director, officer, or employee of an organization formally partnered with and/or doing business with the school(s) through a management or services agreement, please identify only the name of the organization, your position in the organization, and the relationship between such organization and the school(s). If there was no financial interest, check **None**.

None

Organization conducting business with the school(s)	Nature of business conducted	Approximate value of the business conducted	Name of Trustee and/or immediate family member of household holding an interest in the organization conducting business with the school(s) and the nature of the interest	Steps taken to avoid conflict of interest

This document is considered a public record and, as such, may be made available to members of the public upon request under the Freedom of Information Law. The personal contact information provided below will be redacted.



Maureen Ryan

7/11/22

Signature

Date

Acceptable signature formats include:

- Digitally certified PDF signature
- Print form, manually sign, scan to PDF

last revised 04/2022

**Disclosure of Financial Interest by a Current
or Former Trustee**

Trustee Name:

Raul Rubio

Name of Charter School Education Corporation:

MESA Charter High School

1. List all positions held on the education corporation Board of Trustees ("Board") (e.g., chair, vice-chair, treasurer, secretary, parent representative, etc.).

Board Member

2. Are you related, by blood or marriage, to any person employed by the school and/or education corporation?

Yes No

If **Yes**, please describe the nature of your relationship and the person's position, job description, and other responsibilities with the school.

3. Are you related by blood, or marriage, or legal adoption/guardianship to any student currently enrolled in a school operated by the education corporation?

Yes No

If **Yes**, please describe the nature of your relationship and if the student could benefit from your participation.

4. Are you related, by blood or marriage, to any person that could otherwise benefit from your participation as a board member of the education corporation?

Yes No

If **Yes**, please describe the nature of your relationship and if this person could benefit from your participation.

5. Are you a past, current, or prospective employee of the charter school, education corporation, and/or an entity that provides comprehensive management services ("CMO"), whether for-profit or not-for-profit, which contracts, or may contract, with the charter school or education corporation; or do you serve as an employee, officer, or director of, or own a controlling interest in, a business or entity that contracts, or does business with, or plans to contract or do business with, the charter school, education corporation, and/or a CMO, whether for-profit or not-for-profit, including, but not limited to, the lease of real or personal property to the said entities?

Yes No

If **Yes**, please provide a description of the position(s) you hold, your responsibilities, your salary and your start date.

6. Identify each interest/transaction (and provide the requested information) that you, any of your immediate family members, and/or any persons who you reside with have held or engaged in with the charter school(s) operated by the education corporation during the time you have served on the Board, and in the six months prior to such service. If there has been no such interest or transaction, check **None**.

None

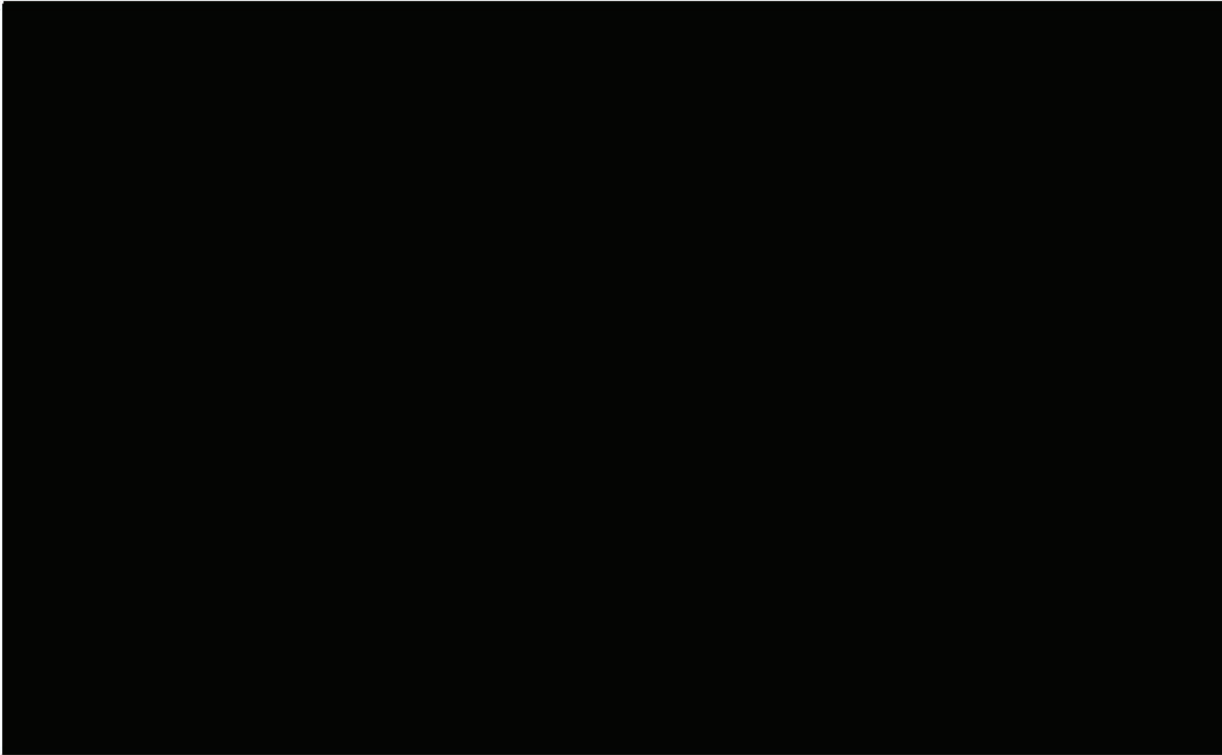
Date(s)	Nature of financial interest / transaction	Steps taken to avoid a conflict of interest, (e.g., did not vote, did not participate in discussion)	Name of person holding interest or engaging in transaction and relationship to you

7. Identify each individual, business, corporation, union association, firm, partnership, franchise holding company, joint-stock company, business or real estate trust, non-profit organization, or other organization or group of people doing business with the school(s) operated by the education corporation **and** in which such entity, during the time of your tenure as a trustee, you and/or your immediate family member(s) or person(s) you reside with had a financial interest or other relationship. If you are a member, director, officer, or employee of an organization formally partnered with and/or doing business with the school(s) through a management or services agreement, please identify only the name of the organization, your position in the organization, and the relationship between such organization and the school(s). If there was no financial interest, check **None**.

None

Organization conducting business with the school(s)	Nature of business conducted	Approximate value of the business conducted	Name of Trustee and/or immediate family member of household holding an interest in the organization conducting business with the school(s) and the nature of the interest	Steps taken to avoid conflict of interest

This document is considered a public record and, as such, may be made available to members of the public upon request under the Freedom of Information Law. The personal contact information provided below will be redacted.



Signature **Date**

Acceptable signature formats include:

- Digitally certified PDF signature
- Print form, manually sign, scan to PDF

last revised 04/2022

**Disclosure of Financial Interest by a Current
or Former Trustee**

Trustee Name:

KYM WARD GAFFNEY

Name of Charter School Education Corporation:

MESA MATH ENGINEERING SCIENCE ACADEMY

1. List all positions held on the education corporation Board of Trustees ("Board") (e.g., chair, vice-chair, treasurer, secretary, parent representative, etc.).

Board Member
Co Resource Chair

2. Are you related, by blood or marriage, to any person employed by the school and/or education corporation?

Yes No

If Yes, please describe the nature of your relationship and the person's position, job description, and other responsibilities with the school.

3. Are you related by blood, or marriage, or legal adoption/guardianship to any student currently enrolled in a school operated by the education corporation?

Yes No

If Yes, please describe the nature of your relationship and if the student could benefit from your participation.

4. Are you related, by blood or marriage, to any person that could otherwise benefit from your participation as a board member of the education corporation?

Yes No

If **Yes**, please describe the nature of your relationship and if this person could benefit from your participation.

5. Are you a past, current, or prospective employee of the charter school, education corporation, and/or an entity that provides comprehensive management services ("CMO"), whether for-profit or not-for-profit, which contracts, or may contract, with the charter school or education corporation; or do you serve as an employee, officer, or director of, or own a controlling interest in, a business or entity that contracts, or does business with, or plans to contract or do business with, the charter school, education corporation, and/or a CMO, whether for-profit or not-for-profit, including, but not limited to, the lease of real or personal property to the said entities?

Yes No

If **Yes**, please provide a description of the position(s) you hold, your responsibilities, your salary and your start date.

6. Identify each interest/transaction (and provide the requested information) that you, any of your immediate family members, and/or any persons who you reside with have held or engaged in with the charter school(s) operated by the education corporation during the time you have served on the Board, and in the six months prior to such service. If there has been no such interest or transaction, check **None**.

None

Date(s)	Nature of financial interest / transaction	Steps taken to avoid a conflict of interest, (e.g., did not vote, did not participate in discussion)	Name of person holding interest or engaging in transaction and relationship to you

7. Identify each individual, business, corporation, union association, firm, partnership, franchise holding company, joint-stock company, business or real estate trust, non-profit organization, or other organization or group of people doing business with the school(s) operated by the education corporation **and** in which such entity, during the time of your tenure as a trustee, you and/or your immediate family member(s) or person(s) you reside with had a financial interest or other relationship. If you are a member, director, officer, or employee of an organization formally partnered with and/or doing business with the school(s) through a management or services agreement, please identify only the name of the organization, your position in the organization, and the relationship between such organization and the school(s). If there was no financial interest, check **None**.

None

Organization conducting business with the school(s)	Nature of business conducted	Approximate value of the business conducted	Name of Trustee and/or immediate family member of household holding an interest in the organization conducting business with the school(s) and the nature of the interest	Steps taken to avoid conflict of interest

This document is considered a public record and, as such, may be made available to members of the public upon request under the Freedom of Information Law. The personal contact information provided below will be redacted.



Business Address:



Lynna J. Freney

Signature

7/11/22

Date

Acceptable signature formats include:

- Digitally certified PDF signature
- Print form, manually sign, scan to PDF

last revised 04/2022

**Disclosure of Financial Interest by a Current
or Former Trustee**

Trustee Name:

Jacques S. Pierre

Name of Charter School Education Corporation:

MESA Charter High School

1. List all positions held on the education corporation Board of Trustees ("Board") (e.g., chair, vice-chair, treasurer, secretary, parent representative, etc.).

Board of Trustees - member

2. Are you related, by blood or marriage, to any person employed by the school and/or education corporation?

Yes No

If **Yes**, please describe the nature of your relationship and the person's position, job description, and other responsibilities with the school.

3. Are you related by blood, or marriage, or legal adoption/guardianship to any student currently enrolled in a school operated by the education corporation?

Yes No

If **Yes**, please describe the nature of your relationship and if the student could benefit from your participation.

4. Are you related, by blood or marriage, to any person that could otherwise benefit from your participation as a board member of the education corporation?

Yes No

If **Yes**, please describe the nature of your relationship and if this person could benefit from your participation.

5. Are you a past, current, or prospective employee of the charter school, education corporation, and/or an entity that provides comprehensive management services ("CMO"), whether for-profit or not-for-profit, which contracts, or may contract, with the charter school or education corporation; or do you serve as an employee, officer, or director of, or own a controlling interest in, a business or entity that contracts, or does business with, or plans to contract or do business with, the charter school, education corporation, and/or a CMO, whether for-profit or not-for-profit, including, but not limited to, the lease of real or personal property to the said entities?

Yes No

If **Yes**, please provide a description of the position(s) you hold, your responsibilities, your salary and your start date.

6. Identify each interest/transaction (and provide the requested information) that you, any of your immediate family members, and/or any persons who you reside with have held or engaged in with the charter school(s) operated by the education corporation during the time you have served on the Board, and in the six months prior to such service. If there has been no such interest or transaction, check **None**.

None

Date(s)	Nature of financial interest / transaction	Steps taken to avoid a conflict of interest, (e.g., did not vote, did not participate in discussion)	Name of person holding interest or engaging in transaction and relationship to you

7. Identify each individual, business, corporation, union association, firm, partnership, franchise holding company, joint-stock company, business or real estate trust, non-profit organization, or other organization or group of people doing business with the school(s) operated by the education corporation **and** in which such entity, during the time of your tenure as a trustee, you and/or your immediate family member(s) or person(s) you reside with had a financial interest or other relationship. If you are a member, director, officer, or employee of an organization formally partnered with and/or doing business with the school(s) through a management or services agreement, please identify only the name of the organization, your position in the organization, and the relationship between such organization and the school(s). If there was no financial interest, check **None**.

None

Organization conducting business with the school(s)	Nature of business conducted	Approximate value of the business conducted	Name of Trustee and/or immediate family member of household holding an interest in the organization conducting business with the school(s) and the nature of the interest	Steps taken to avoid conflict of interest

This document is considered a public record and, as such, may be made available to members of the public upon request under the Freedom of Information Law. The personal contact information provided below will be redacted.



Handwritten signature in blue ink.

7/29/2022

Signature

Date

Acceptable signature formats include:

- Digitally certified PDF signature
- Print form, manually sign, scan to PDF

last revised 04/2022

**Disclosure of Financial Interest by a Current
or Former Trustee**

Trustee Name:

Angel Cortes

Name of Charter School Education Corporation:

Mesa Charter High School

1. List all positions held on the education corporation Board of Trustees ("Board") (e.g., chair, vice-chair, treasurer, secretary, parent representative, etc.).

Parent Representative, Vice-Chair, Chair

2. Are you related, by blood or marriage, to any person employed by the school and/or education corporation?

Yes No

If **Yes**, please describe the nature of your relationship and the person's position, job description, and other responsibilities with the school.

3. Are you related by blood, or marriage, or legal adoption/guardianship to any student currently enrolled in a school operated by the education corporation?

Yes No

If **Yes**, please describe the nature of your relationship and if the student could benefit from your participation.

4. Are you related, by blood or marriage, to any person that could otherwise benefit from your participation as a board member of the education corporation?

Yes

No

If **Yes**, please describe the nature of your relationship and if this person could benefit from your participation.

5. Are you a past, current, or prospective employee of the charter school, education corporation, and/or an entity that provides comprehensive management services ("CMO"), whether for-profit or not-for-profit, which contracts, or may contract, with the charter school or education corporation; or do you serve as an employee, officer, or director of, or own a controlling interest in, a business or entity that contracts, or does business with, or plans to contract or do business with, the charter school, education corporation, and/or a CMO, whether for-profit or not-for-profit, including, but not limited to, the lease of real or personal property to the said entities?

Yes

No

If **Yes**, please provide a description of the position(s) you hold, your responsibilities, your salary and your start date.

6. Identify each interest/transaction (and provide the requested information) that you, any of your immediate family members, and/or any persons who you reside with have held or engaged in with the charter school(s) operated by the education corporation during the time you have served on the Board, and in the six months prior to such service. If there has been no such interest or transaction, check **None**.



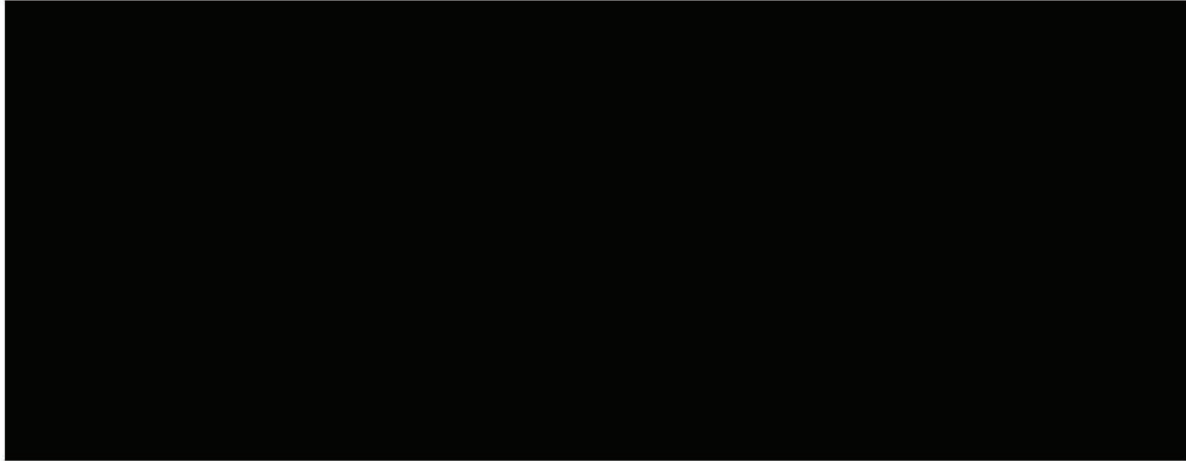
Date(s)	Nature of financial interest / transaction	Steps taken to avoid a conflict of interest, (e.g., did not vote, did not participate in discussion)	Name of person holding interest or engaging in transaction and relationship to you

7. Identify each individual, business, corporation, union association, firm, partnership, franchise holding company, joint-stock company, business or real estate trust, non-profit organization, or other organization or group of people doing business with the school(s) operated by the education corporation **and** in which such entity, during the time of your tenure as a trustee, you and/or your immediate family member(s) or person(s) you reside with had a financial interest or other relationship. If you are a member, director, officer, or employee of an organization formally partnered with and/or doing business with the school(s) through a management or services agreement, please identify only the name of the organization, your position in the organization, and the relationship between such organization and the school(s). If there was no financial interest, check **None**.



Organization conducting business with the school(s)	Nature of business conducted	Approximate value of the business conducted	Name of Trustee and/or immediate family member of household holding an interest in the organization conducting business with the school(s) and the nature of the interest	Steps taken to avoid conflict of interest

This document is considered a public record and, as such, may be made available to members of the public upon request under the Freedom of Information Law. The personal contact information provided below will be redacted.



Home Telephone:

Home Address:

DocuSigned by:
Angel Cortes
A6BFF40E04DB430...

7/21/2022

Signature

Date

Acceptable signature formats include:

- Digitally certified PDF signature
- Print form, manually sign, scan to PDF

last revised 04/2022

MINUTES OF A MEETING OF
THE BOARD OF TRUSTEES OF THE
MATH, ENGINEERING, AND SCIENCE ACADEMY (MESA)
CHARTER HIGH SCHOOL

October 26, 2021

A regular meeting of the Board of Trustees (the “**Board**”) of the Math, Engineering, And Science Academy Charter High School (the “**School**”), was held beginning at 6:15 local time pursuant to notice duly given.

The following Trustees were present: **Jacques Pierre, Chet Mancini, Angel Cortes, Maureen Ryan, Raul Rubio, Kym Ward Gaffney, Agatha Patterson,**

The following trustees were absent : **Adria Martig, Jeremy Lipstein Eve Colavito**

Arthur Samuels, Cassandra Franzese, and Lauren Rawles were also present at the meeting.

Maureen facilitated the meeting and Arthur recorded the minutes. **All of the participants were able to speak and be heard and were deemed to be present at the meeting pursuant to the School’s bylaws.**

After noting that a quorum was present, Maureen called the meeting to order.

- Angel motioned to approve the consent agenda, ratifying the following which had all been approved via email. Raul seconded. All voted to approve with no opposition.
 - The audit findings
 - School Leader Contracts
 - September meeting minutes

Public Comment. The Chair opened the floor for public comment on matters previously discussed at the meeting in accordance with Board policy regarding public comments, which policy was made available at the meeting. No one from the public was in attendance.

This concludes our formal approval portion of the meeting.

Adjournment. There being no further business to come before the Board, the meeting was adjourned.

Respectfully submitted,

DocuSigned by:

Arthur Samuels

292D61A98D3541E...

Arthur Samuels

Co-Executive Director, MESA

APPROVED:

DocuSigned by:

Maureen Ryan

A2DA529CA5B44E7...

Maureen Ryan

Board Chair

MINUTES OF A MEETING OF
THE BOARD OF TRUSTEES OF THE
MATH, ENGINEERING, AND SCIENCE ACADEMY (MESA)
CHARTER HIGH SCHOOL

January 25, 2022

A regular meeting of the Board of Trustees (the “**Board**”) of the Math, Engineering, And Science Academy Charter High School (the “**School**”), was held beginning at 5:30 local time pursuant to notice duly given.

The following Trustees were present: **Chet Mancini, Angel Cortes, Maureen Ryan, Jacques Pierre, Raul Rubio, Adria Martig, Agatha Patterson, Kym Ward Gaffney**

The following trustees were absent: **None**

Pagee Cheung, Arthur Samuels, Cassandra Franzese, and Lauren Rawles were also present at the meeting.

Maureen facilitated the meeting and Arthur recorded the minutes. **All of the participants were able to speak and be heard and were deemed to be present at the meeting pursuant to the School’s bylaws.**

After noting that a quorum was present, Angel called the meeting to order.

- Angel voted to approve the December Minutes. Chet seconded. All voted to approve with no opposition.

Public Comment. The Chair opened the floor for public comment on matters previously discussed at the meeting in accordance with Board policy regarding public comments, which policy was made available at the meeting. No one from the public was in attendance.

This concludes our formal approval portion of the meeting.

Adjournment. There being no further business to come before the Board, the meeting was adjourned.

Respectfully submitted,

DocuSigned by:
Arthur Samuels
292D61A98D3541E...
Arthur Samuels
Co-Executive Director, MESA

APPROVED:

DocuSigned by:
Maureen Ryan
A2DA529CA5B44E7...
Maureen Ryan
Board Chair

MINUTES OF A MEETING OF
THE BOARD OF TRUSTEES OF THE
MATH, ENGINEERING, AND SCIENCE ACADEMY (MESA)

CHARTER HIGH SCHOOL

November 23, 2021

A regular meeting of the Board of Trustees (the “**Board**”) of the Math, Engineering, And Science Academy Charter High School (the “**School**”), was held beginning at 5:30 local time pursuant to notice duly given.

The following Trustees were present: **Chet Mancini, Angel Cortes, Raul Rubio, Kym Ward Gaffney, Agatha Patterson, Eve Colavito**

The following trustees were absent : **Maureen Ryan, Adria Martig, Jacques Pierre**

Arthur Samuels, Pagee Cheung Cassandra Franzese, and Lauren Rawles were also present at the meeting.

Angel facilitated the meeting and Arthur recorded the minutes. **All of the participants were able to speak and be heard and were deemed to be present at the meeting pursuant to the School’s bylaws.**

After noting that a quorum was present, Angel called the meeting to order.

- Kym voted to accept the resignations of Eve Colavito and Jeremy Lipstein. Chet seconded. All voted to approve with no opposition.
- Chet voted to appoint Agatha Patterson as Treasurer. Kym seconded. All voted to approve with no opposition.
- Kym voted to approve the October Minutes. Raul seconded. All voted to approve with no opposition.

Public Comment. The Chair opened the floor for public comment on matters previously discussed at the meeting in accordance with Board policy regarding public comments, which policy was made available at the meeting. No one from the public was in attendance.

This concludes our formal approval portion of the meeting.

Adjournment. There being no further business to come before the Board, the meeting was adjourned.

Respectfully submitted,

DocuSigned by:

Arthur Samuels

292D61A98D3541E...

Arthur Samuels

Co-Executive Director, MESA

APPROVED:

DocuSigned by:

Maureen Ryan

A2DA529CA5B44E7...

Maureen Ryan

Board Chair

MINUTES OF A MEETING OF
THE BOARD OF TRUSTEES OF THE
MATH, ENGINEERING, AND SCIENCE ACADEMY (MESA)

CHARTER HIGH SCHOOL

September 28, 2021

A regular meeting of the Board of Trustees (the “**Board**”) of the Math, Engineering, And Science Academy Charter High School (the “**School**”), was held beginning at 5:30 local time pursuant to notice duly given.

The following Trustees were present: **Maureen Ryan, Angel Cortes, Chet Mancini, Jacques Pierre, Adria Martig, Agatha Patterson, Kym Ward Gaffney, Raul Rubio**

The following trustees were absent : **Eve Colavito, Jeremy Lipstein**

Arthur Samuels was also present at the meeting.

Maureen facilitated the meeting and Arthur recorded the minutes. **All of the participants were able to speak and be heard and were deemed to be present at the meeting pursuant to the School’s bylaws.**

After noting that a quorum was present, Maureen called the meeting to order.

- Jacques motioned to approve the minutes from the August meeting. Raul Seconded. All approved with no opposition.

Public Comment. The Chair opened the floor for public comment on matters previously discussed at the meeting in accordance with Board policy regarding public comments, which policy was made available at the meeting. No one from the public was in attendance.

This concludes our formal approval portion of the meeting.

Adjournment. There being no further business to come before the Board, the meeting was adjourned.

Respectfully submitted,

DocuSigned by:

Arthur Samuels

292D61A98D3541E...

Arthur Samuels
Executive Director, MESA

APPROVED:

DocuSigned by:

Maureen Ryan

A2DA529CA5B44E7...

Maureen Ryan
Board Chair

MINUTES OF A MEETING OF
THE BOARD OF TRUSTEES OF THE
MATH, ENGINEERING, AND SCIENCE ACADEMY (MESA)
CHARTER HIGH SCHOOL

July 27, 2021

A regular meeting of the Board of Trustees (the “**Board**”) of the Math, Engineering, And Science Academy Charter High School (the “**School**”), was held via Zoom at <https://us04web.zoom.us/j/71776347782?pwd=bDMyRHpSNHI2M3k3REoxRXE5eTVlQT09> due to the Coronavirus health emergency, beginning at 5:30 local time pursuant to notice duly given.

The following Trustees were present via videoconference: **Jacques Pierre, Chet Mancini, Adria Martig, Angel Cortes, Maureen Ryan, Kym Ward Gaffney, Eve Colavito**

The following trustees were absent : **Jeremy Lipstein, Agatha Patterson, Raul Rubio**

Arthur Samuels and Pagee Cheung were also present at the meeting.

Angel facilitated the meeting and Arthur recorded the minutes. **All of the participants were able to speak and be heard and were deemed to be present at the meeting pursuant to the School’s bylaws.**

After noting that a quorum was present, Angel called the meeting to order.

- Angel motioned to approve the amendment to the school’s Financial Policies and Procedures. Jacques Second. All voted to approve with no opposition.
- Jacques motioned to approve the minutes from the June meeting. Adria seconded. All approved with no opposition.

Public Comment. The Chair opened the floor for public comment on matters previously discussed at the meeting in accordance with Board policy regarding public comments, which policy was made available at the meeting. No one from the public was in attendance.

This concludes our formal approval portion of the meeting.

Adjournment. There being no further business to come before the Board, the meeting was adjourned.

Respectfully submitted,

DocuSigned by:
Arthur Samuels
292D61A98D3541E...
Arthur Samuels
Executive Director, MESA

APPROVED:

DocuSigned by:
Maureen Ryan
A2DA529CA5B44E7...
Maureen Ryan
Board Chair

MINUTES OF A MEETING OF
THE BOARD OF TRUSTEES OF THE
MATH, ENGINEERING, AND SCIENCE ACADEMY (MESA)

CHARTER HIGH SCHOOL

February 22, 2022

A regular meeting of the Board of Trustees (the “**Board**”) of the Math, Engineering, And Science Academy Charter High School (the “**School**”), was held beginning at 5:30 local time pursuant to notice duly given.

The following Trustees were present: **Chet Mancini, Angel Cortes, Maureen Ryan, Jacques Pierre, Adria Martig, Agatha Patterson, Kym Ward Gaffney, Raul Rubio**

The following trustees were absent: **None**

Pagee Cheung, Arthur Samuels, Aiko Mitsui, and Claudia Granados were also present at the meeting.

Maureen facilitated the meeting and Arthur recorded the minutes. **All of the participants were able to speak and be heard and were deemed to be present at the meeting pursuant to the School’s bylaws.**

After noting that a quorum was present, Maureen called the meeting to order.

- Angel made the following motion. Jacques seconded. All approved with no opposition. “The MESA Charter High School Board of Trustees, having conducted a thorough criminal history record check via fingerprinting which is deemed acceptable by NYSED, and having discovered no State or federal criminal history, or having provided information regarding such history to NYSED, if found, and having verified that any academic and/or professional credential or qualification presented by the proposed member is genuine, and having reviewed the application in its entirety, has voted to select Akiko Mitsui as a member to its Board of Trustees, with a term expiring on June 30, 2023, pending approval by NYSED. The resolution approving Akiko Mitsui is adopted upon NYSED’s approval.”
- Angel made the following motion. Jacques seconded. All approved with no opposition. “The MESA Charter High School Board of Trustees, having conducted a thorough criminal history record check via fingerprinting which is deemed acceptable by NYSED, and having discovered no State or federal criminal history, or having provided information regarding such history to NYSED, if found, and having verified that any academic and/or professional credential or qualification presented by the proposed member is genuine, and having reviewed the application in its

entirety, has voted to select Claudia Granados as a member to its Board of Trustees, with a term expiring on June 30, 2023, pending approval by NYSED. The resolution approving Claudia Granados is adopted upon NYSED's approval."

- Angel voted to approve the non-material revisions to the charter. Adria seconded. All voted to approve with no opposition.
- Jacques voted to approve the 990. Kym seconded. All voted to approve with no opposition.
- Adria voted to approve the January Minutes. Chet seconded. All voted to approve with no opposition.

Public Comment. The Chair opened the floor for public comment on matters previously discussed at the meeting in accordance with Board policy regarding public comments, which policy was made available at the meeting. No one from the public was in attendance.

This concludes our formal approval portion of the meeting.

Adjournment. There being no further business to come before the Board, the meeting was adjourned.

Respectfully submitted,

DocuSigned by:
Arthur Samuels
292D61A98D3541E...

Arthur Samuels
Co-Executive Director, MESA

APPROVED:

DocuSigned by:
Maureen Ryan
A2DA529CA5B44E7...

Maureen Ryan
Board Chair

MINUTES OF A MEETING OF
THE BOARD OF TRUSTEES OF THE
MATH, ENGINEERING, AND SCIENCE ACADEMY (MESA)

CHARTER HIGH SCHOOL

August 24, 2021

A regular meeting of the Board of Trustees (the “**Board**”) of the Math, Engineering, And Science Academy Charter High School (the “**School**”), was held beginning at 5:30 local time pursuant to notice duly given.

The following Trustees were present: **Jacques Pierre, Chet Mancini, Angel Cortes, Maureen Ryan, Jeremy Lipstein, Agatha Patterson,**

The following trustees were absent : **Raul Rubio, Adria Martig, Kym Ward Gaffney, Eve Colavito**

Arthur Samuels and Pagee Cheung were also present at the meeting.

Maureen facilitated the meeting and Arthur recorded the minutes. **All of the participants were able to speak and be heard and were deemed to be present at the meeting pursuant to the School’s bylaws.**

After noting that a quorum was present, Maureen called the meeting to order.

- Angel motioned to approve the amendment to the school’s Financial Policies and Procedures and revisions to the organizational chart. Agatha Second. All voted to approve with no opposition.
- Chet motioned to approve the minutes from the July meeting. Jacques seconded. Agatha abstained. All approved with no opposition.

Public Comment. The Chair opened the floor for public comment on matters previously discussed at the meeting in accordance with Board policy regarding public comments, which policy was made available at the meeting. No one from the public was in attendance.

This concludes our formal approval portion of the meeting.

Adjournment. There being no further business to come before the Board, the meeting was adjourned.

Respectfully submitted,

DocuSigned by:
Arthur Samuels
292D61A98D3541E...

Arthur Samuels
Executive Director, MESA

APPROVED:

DocuSigned by:
Maureen Ryan
A2DA529CA5B44E7...

Maureen Ryan
Board Chair

MINUTES OF A MEETING OF
THE BOARD OF TRUSTEES OF THE
MATH, ENGINEERING, AND SCIENCE ACADEMY (MESA)

CHARTER HIGH SCHOOL

June 27, 2022

A regular meeting of the Board of Trustees (the “**Board**”) of the Math, Engineering, And Science Academy Charter High School (the “**School**”), was held beginning at 5:30 PM local time pursuant to notice duly given.

The following Trustees were present: **Chet Mancini, Maureen Ryan, Jacques Pierre, Claudia Granados, Agatha Patterson, Angel Cortes**

The following trustees were absent: **Kym Ward Gaffney, Raul Rubio**

Arthur Samuels, Pagee Cheung were also present at the meeting.

Maureen facilitated the meeting and Arthur recorded the minutes. **All of the participants were able to speak and be heard and were deemed to be present at the meeting pursuant to the School’s bylaws.**

After noting that a quorum was present, Maureen called the meeting to order.

- Jacques voted to approve the amendment to the disciplinary policy, Angel seconded. All voted approve with no opposition.
- Jacques voted to approve the budget for FY 22-23, Agatha seconded. All voted to approve with no opposition.
- Claudia voted to approve the financial services contract, Jacques seconded. All voted to approve with no opposition.
- Agatha voted to approve the renewal consultant contract. Chet seconded. All voted to approve with no opposition.
- Jacques voted to approve the May Minutes. Chet seconded. All voted to approve with no opposition.

Public Comment. The Chair opened the floor for public comment on matters previously discussed at the meeting in accordance with Board policy regarding public comments, which policy was made available at the meeting. No one from the public was in attendance.

This concludes our formal approval portion of the meeting.

Adjournment. There being no further business to come before the Board, the meeting was adjourned.

Respectfully submitted,

DocuSigned by:

Arthur Samuels

292D61A98D3541E...

Arthur Samuels

Co-Executive Director, MESA

APPROVED:

DocuSigned by:

Angel Cortes

A6BFF40E04DB430...

Angel Cortes

Board Chair

MINUTES OF A MEETING OF
THE BOARD OF TRUSTEES OF THE
MATH, ENGINEERING, AND SCIENCE ACADEMY (MESA)
CHARTER HIGH SCHOOL

May 24, 2022

A regular meeting of the Board of Trustees (the “**Board**”) of the Math, Engineering, And Science Academy Charter High School (the “**School**”), was held beginning at 5:30 PM local time pursuant to notice duly given.

The following Trustees were present: **Chet Mancini, Maureen Ryan, Jacques Pierre, Kym Ward Gaffney, Angel Cortes**

The following trustees were absent: **Claudia Granados, Raul Rubio, Agatha Patterson**

Arthur Samuels, Pagee Cheung, and Lily Mancini were also present at the meeting.

Maureen facilitated the meeting and Arthur recorded the minutes. **All of the participants were able to speak and be heard and were deemed to be present at the meeting pursuant to the School’s bylaws.**

After noting that a quorum was present, Maureen called the meeting to order.

- Jacques voted to approve the April Minutes. Kym seconded. All voted to approve with no opposition.
- Angel voted to accept the resignation of Adria Martig. Jacques seconded. All voted to approve with no opposition.

Public Comment. The Chair opened the floor for public comment on matters previously discussed at the meeting in accordance with Board policy regarding public comments, which policy was made available at the meeting. No one from the public was in attendance.

This concludes our formal approval portion of the meeting.

Adjournment. There being no further business to come before the Board, the meeting was adjourned.

Respectfully submitted,

DocuSigned by:

Arthur Samuels

292D61A98D3541E...

Arthur Samuels

Co-Executive Director, MESA

APPROVED:

DocuSigned by:

Maureen Ryan

A2DA529CA5B44E7...

Maureen Ryan

Board Chair

MINUTES OF A MEETING OF
THE BOARD OF TRUSTEES OF THE
MATH, ENGINEERING, AND SCIENCE ACADEMY (MESA)
CHARTER HIGH SCHOOL

March 29, 2022

A regular meeting of the Board of Trustees (the “**Board**”) of the Math, Engineering, And Science Academy Charter High School (the “**School**”), was held beginning at 5:30 local time pursuant to notice duly given.

The following Trustees were present: **Chet Mancini, Angel Cortes, Maureen Ryan, Adria Martig, Agatha Patterson, Kym Ward Gaffney, Raul Rubio**

The following trustees were absent: **Jacques Pierre, Claudia Granados**

Arthur Samuels, was also present at the meeting.

Maureen facilitated the meeting and Arthur recorded the minutes. **All of the participants were able to speak and be heard and were deemed to be present at the meeting pursuant to the School’s bylaws.**

After noting that a quorum was present, Maureen called the meeting to order.

- Angel voted to approve the February Minutes. Adria seconded. All voted to approve with no opposition.

Public Comment. The Chair opened the floor for public comment on matters previously discussed at the meeting in accordance with Board policy regarding public comments, which policy was made available at the meeting. No one from the public was in attendance.

This concludes our formal approval portion of the meeting.

Adjournment. There being no further business to come before the Board, the meeting was adjourned.

Respectfully submitted,

DocuSigned by:
Arthur Samuels
292D61A98D3541E...
Arthur Samuels
Co-Executive Director, MESA

APPROVED:

DocuSigned by:
Maureen Ryan
A2DA529CA5B44E7...
Maureen Ryan
Board Chair

MINUTES OF A MEETING OF
THE BOARD OF TRUSTEES OF THE
MATH, ENGINEERING, AND SCIENCE ACADEMY (MESA)
CHARTER HIGH SCHOOL

December 21, 2021

A regular meeting of the Board of Trustees (the “**Board**”) of the Math, Engineering, And Science Academy Charter High School (the “**School**”), was held beginning at 5:30 local time pursuant to notice duly given.

The following Trustees were present: **Chet Mancini, Angel Cortes, Kym Ward Gaffney, Agatha Patterson, Maureen Ryan**

The following trustees were absent : **Raul Rubio, Adria Martig, Jacques Pierre**

Pagee Cheung was also present at the meeting.

Maureen facilitated the meeting and Pagee recorded the minutes. **All of the participants were able to speak and be heard and were deemed to be present at the meeting pursuant to the School’s bylaws.**

After noting that a quorum was present, Angel called the meeting to order.

- Kym voted to approve the November Minutes. Angel seconded. All voted to approve with no opposition.

Public Comment. The Chair opened the floor for public comment on matters previously discussed at the meeting in accordance with Board policy regarding public comments, which policy was made available at the meeting. No one from the public was in attendance.

This concludes our formal approval portion of the meeting.

Adjournment. There being no further business to come before the Board, the meeting was adjourned.

Respectfully submitted,

DocuSigned by:
Pagee Cheung
0D53B7438ECD4E7...

Pagee Cheung
Co-Executive Director, MESA

APPROVED:

DocuSigned by:
Maureen Ryan
A2DA529CA5B44E7...

Maureen Ryan
Board Chair

MINUTES OF A MEETING OF
THE BOARD OF TRUSTEES OF THE
MATH, ENGINEERING, AND SCIENCE ACADEMY (MESA)
CHARTER HIGH SCHOOL

April 26, 2022

A regular meeting of the Board of Trustees (the “**Board**”) of the Math, Engineering, And Science Academy Charter High School (the “**School**”), was held beginning at 5:30 PM local time pursuant to notice duly given.

The following Trustees were present: **Chet Mancini, Maureen Ryan, Adria Martig, Agatha Patterson, Kym Ward Gaffney, Angel Cortes, Jacques Pierre**

The following trustees were absent: **Claudia Granados, Raul Rubio,**

Arthur Samuels and Pagee Cheung were also present at the meeting.

Maureen facilitated the meeting and Arthur recorded the minutes. **All of the participants were able to speak and be heard and were deemed to be present at the meeting pursuant to the School’s bylaws.**

After noting that a quorum was present, Maureen called the meeting to order.

- Angel voted to approve the March Minutes. Chet seconded. Jacques abstained. All voted to approve with no opposition.

Public Comment. The Chair opened the floor for public comment on matters previously discussed at the meeting in accordance with Board policy regarding public comments, which policy was made available at the meeting. No one from the public was in attendance.

This concludes our formal approval portion of the meeting.

Adjournment. There being no further business to come before the Board, the meeting was adjourned.

Respectfully submitted,

DocuSigned by:
Arthur Samuels

292D61A98D3541E...

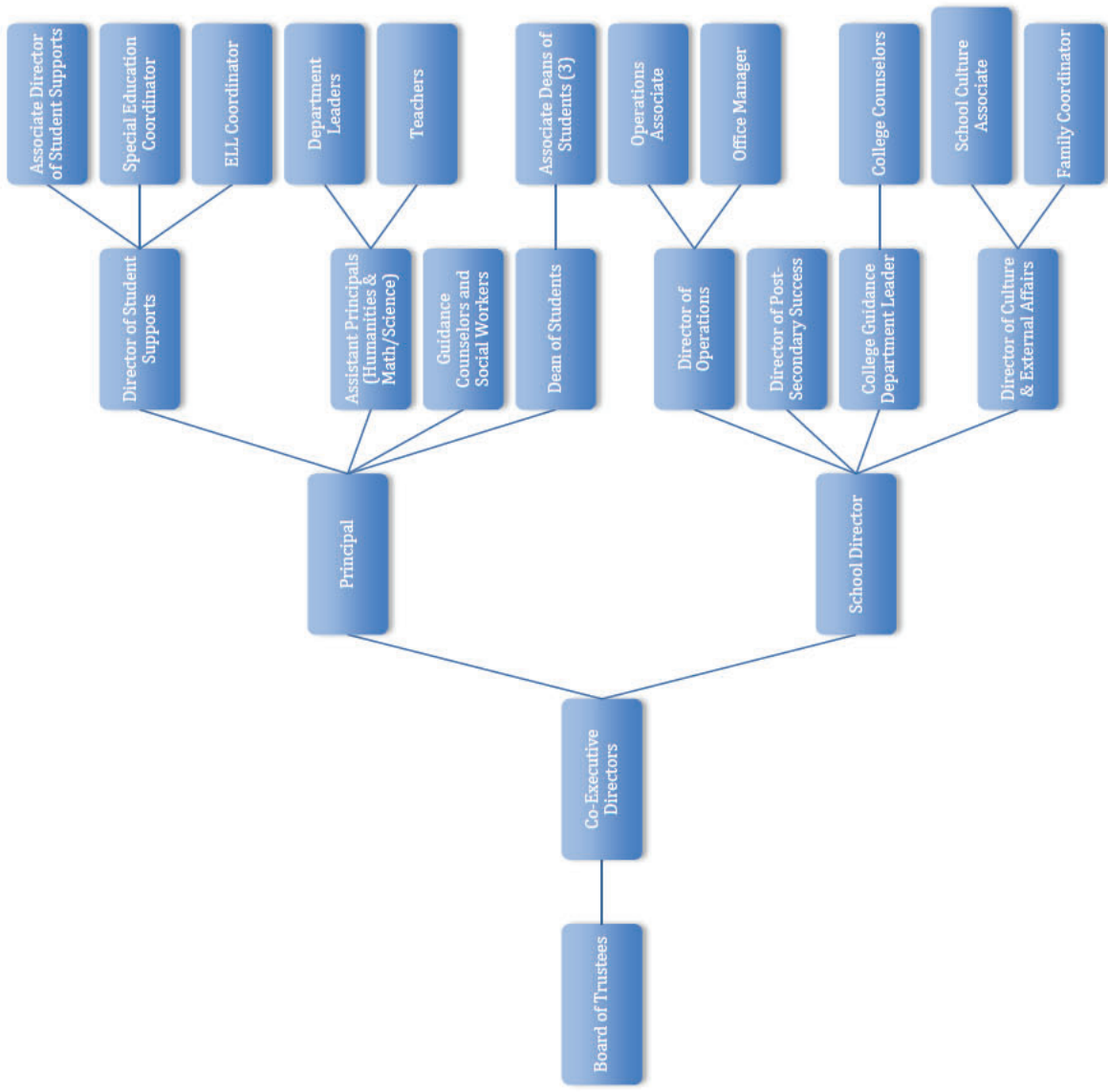
Arthur Samuels
Co-Executive Director, MESA

APPROVED:

DocuSigned by:
Maureen Ryan

A2DA529CA5B44E7...

Maureen Ryan
Board Chair





MESA Charter High School 2022- 2023 Calendar

Aug-22				
Mon	Tues	Wed	Thur	Fri
1	2	3	4	5
8 SI	9 SI	10 SI	11 SI	12 SI
15 SI	16 SI/R	17 SI/R	18 SI	19 SI
22 SV	23 SV	24 SV	25 SV	26 SV
29	30	31		

Sep-22				
Mon	Tues	Wed	Thur	Fri
			1	2
5 H	6	7	8	9
12	13	14	15	16
19	20	21	22	23
26	27	28	29	30

Oct-22				
Mon	Tues	Wed	Thur	Fri
3	4	5	6	7
10 H	11	12 ADV	13	14
17	18	19	20	21
24	25	26	27	28
31 PD				

Nov-22				
Mon	Tues	Wed	Thur	Fri
	1	2	3	4
7	8	9	10	11
14	15 RP	16 E	17 E	18 PD
21 H	22 H	23 H	24 H	25 H
28	29	30		

Dec-22				
Mon	Tues	Wed	Thur	Fri
			1	2
5	6	7	8	9
12	13	14	15	16
19	20	21	22	23
26 H	27 H	28 H	29 H	30 H

Jan-23				
Mon	Tues	Wed	Thur	Fri
2 H	3 H	4 H	5 H	6 H
9	10	11	12	13
16 H	17	18	19	20
23	24 R	25 R	26 R	27 R
30	31			

SI: Summer Institute (school closed to students)
 PD: Professional Development Day (school closed to students)
 I: Intersession Programming
 SV: Summer Vista (students released at 1:30)
 M: Mock Regents

H: Holiday (school closed to all)
 RP: Reading period (exam review)
 E: MESA Exams
 R: Regents Exams (only certain students)
 ADV: Advisor Conferences

Feb-23				
Mon	Tues	Wed	Thur	Fri
		1	2	3
6	7	8 ADV	9	10
13	14	15	16	17
20 H	21 H	22 H	23 H	24 H
27 PD	28			

Mar-23				
Mon	Tues	Wed	Thur	Fri
		1	2	3
6	7	8	9	10
13	14 RP	15 E	16 E	17 PD
20	21	22	23	24
27	28	29	30	31

Apr-23				
Mon	Tues	Wed	Thur	Fri
3 I	4 I	5 I	6 I	7 H
10 H	11 H	12 H	13 H	14 H
17	18	19	20	21
24	25	26	27	28

May-23				
Mon	Tues	Wed	Thur	Fri
1	2	3	4	5
8	9	10 ADV	11	12
15	16	17 M	18	19
22	23	24 M	25	26
29 H	30 PD	31		

Jun-23				
Mon	Tues	Wed	Thur	Fri
			1	2
5	6	7	8	9
12 E	13 E	14 R	15 R	16 R
19 R	20 R	21 R	22 R	23
26	27	28	29	30

Jul-23				
Mon	Tues	Wed	Thur	Fri
3	4	5	6	7
10	11	12	13	14
17	18	19	20	21
24 STR	25 STR	26 STR	26 STR	28 STR
31 STR				

SI: Summer Institute (school closed to students)
 PD: Professional Development Day (school closed to students)
 I: Intersession Programming
 SV: Summer Vista (students released at 1:30)
 M: Mock Regents
 ADV: Advisor Conferences

H: Holiday (school closed to all)
 R: Reading period (exam review)
 E: Exams
 R: Regents Exams (only certain students)
 STR: Summer Targeted Remediation for students who qualify

Number of Instructional Days Per Month
 August - 2
 September - 21
 October - 19
 November - 17
 December - 17
 January - 16
 February - 14
 March - 23
 April - 14
 May - 21
 June - 22
 Total 186
 Summer Instruction: July and August - 9