

Application: Icahn Charter School 1

Richard Santiago - rsantiago@ccics.org
2021-2022 Annual Report

Summary

ID: 0000000019

Last submitted: Nov 1 2022 03:22 PM (EDT)

Labels: SUNY Trustees

Entry 1 School Info and Cover Page

Completed Jul 8 2022

[Instructions](#)

Required of ALL Charter Schools

Each Annual Report begins with a completed School Information and Cover Page. The information is collected in a survey format within Annual Report portal. When entering information in the portal, some of the following items may not appear, depending on your authorizer and/or your responses to related items.

Entry 1 School Information and Cover Page

(New schools that were not open for instruction for the 2021-2022 school year are not required to complete or submit an annual report this year).

Please be advised that you will need to complete this cover page (including signatures) before all of the other tasks assigned to you by your school's authorizer are visible on your task page. While completing this cover page task, please ensure that you select the correct authorizer **(as of June 30, 2022)** or you may not be assigned the correct tasks.

BASIC INFORMATION

a. SCHOOL NAME

(Select name from the drop down menu)

ICAHN CHARTER SCHOOL 1 800000046301

a1. Popular School Name

(No response)

b. CHARTER AUTHORIZER (As of June 30th, 2021)

Please select the correct authorizer as of June 30, 2022 or you may not be assigned the correct tasks.

SUNY BOARD OF TRUSTEES

d. DISTRICT / CSD OF LOCATION

CSD # 9 - BRONX

e. DATE OF INITIAL CHARTER

3/2001

f. DATE FIRST OPENED FOR INSTRUCTION

9/2001

c. School Unionized

Is your charter school unionized?

No

h. SCHOOL WEB ADDRESS (URL)

icahncharterschool1.org

i. Total Approved Charter Enrollment for 2021-2022 School Year (exclude Pre-K program enrollment)

324

j. Total Enrollment on June 30, 2022 (exclude Pre-K program enrollment)

311

k. Grades Served during the 2021-2022 School Year (exclude Pre-K program students)

Check all that apply

Grades Served

K, 1, 2, 3, 4, 5, 6, 7, 8

I1. DOES THE SCHOOL CONTRACT WITH A CHARTER OR EDUCATIONAL MANAGEMENT ORGANIZATION?

No

FACILITIES INFORMATION

m. FACILITIES

Will the school maintain or operate multiple sites in 2022-2023?

	Yes, 2 sites
--	--------------

ICAHN CHARTER SCHOOL 1 800000046301

School Site 1 (Primary)

m1. SCHOOL SITES

Please provide information on Site 1 for the upcoming school year.

	Physical Address	Phone Number	District/CSD	Grades to be Served at Site for coming year (K-5, 6-9, etc.)	Receives Rental Assistance for Which Grades (If yes, enter the appropriate grades. If no, enter No).
Site 1	1525 Brook Avenue, Bronx, NY 10457	718-716-8105	NYC CSD 9	k-4	No

m1a. Please provide the contact information for Site 1.

	Name	Title	Work Phone	Alternate Phone	Email Address
School Leader	Lawford Cunningham	Principal	718-716-8105		lcunningham@ccics.org
Operational Leader	Lawford Cunningham	Principal	718-716-8105		lcunningham@ccics.org
Compliance Contact	etom@ccics.org	Superintendent	718-828-0034		etom@ccics.org
Complaint Contact	etom@ccics.org	Superintendent	718-828-0034		etom@ccics.org
DASA Coordinator	Lawford Cunningham	Principal	718-716-8105		lcunningham@ccics.org
Phone Contact for After Hours Emergencies					

m1b. Is site 1 in public (co-located) space or in private space?

Private Space

IF LOCATED IN PRIVATE SPACE IN NYC OR IN DISTRICTS OUTSIDE NYC

m1d. Upload a current Certificate of Occupancy (COO) and the annual Fire Inspection Report for school site 1 if located in private space in NYC or located outside of NYC .

Certificate of Occupancy and Fire Inspection. Provide a copy of a current and non-expired certificate of occupancy (if outside NYC or in private space in NYC). For schools that are not in district space (NYC co-locations), provide a copy of a current and non-expired certificate of occupancy, and a copy of the current annual fire inspection results, which should be dated on or after July 1, 2021.

- **Fire inspection certificates must be updated annually. For the upcoming school year 2022-2023, the fire inspection certificate must be dated after July 1, 2021.**
- **If the fire inspection certificate is dated after the August 1, 2022 submission of the Annual Report, please submit the new certificate with the Annual Report entries due on November 1, 2022.**

Site 1 Certificate of Occupancy (COO)

[Certificate of Occupancy.pdf](#)

Filename: Certificate of Occupancy.pdf **Size:** 44.0 kB

Site 1 Fire Inspection Report

School Site 2

m2. SCHOOL SITES

Please provide information on Site 2 for the upcoming school year.

	Physical Address	Phone Number	District/CSD	Grades to be Served at Site for coming year (K-5, 6-9, etc.)	Receives Rental Assistance for Which Grades (If yes, enter the appropriate grades. If no, enter No).
Site 2	1506 Brook Avenue Bronx, NY 10457	718-716-8105	NYC CSD 9	5-8	no

m2a. Please provide the contact information for Site 2.

	Name	Title	Work Phone	Alternate Phone	Email Address
School Leader	Lawford Cunningham	Principal	718-716-8105		lcunningham@ccics.org
Operational Leader	Lawford Cunningham	Principal	718-716-8105		lcunningham@ccics.org
Compliance Contact	Edward Tom		718-828-0034		etom@ccics.org
Complaint Contact	Edward Tom		718-828-0034		etom@ccics.org
DASA Coordinator	Lawford Cunningham	Principal	718-716-8105		lcunningham@ccics.org
Phone Contact for After Hours Emergencies					

m2b. Is site 2 in public (co-located) space or in private space?

Private Space

IF LOCATED IN PRIVATE SPACE IN NYC OR IN DISTRICTS OUTSIDE NYC

m1d. Upload a current Certificate of Occupancy (COO) and the annual Fire Inspection Report for school site 1 if located in private space in NYC or located outside of NYC .

Certificate of Occupancy and Fire Inspection. Provide a copy of a current and non-expired certificate of occupancy (if outside NYC or in private space in NYC). For schools that are not in district space (NYC co-locations), provide a copy of a current and non-expired certificate of occupancy, and a copy of the current annual fire inspection results, which should be dated on or after July 1, 2022.

- **Fire inspection certificates must be updated annually. For the upcoming school year 2022-2023, the fire inspection certificate must be dated after July 1, 2022.**
- **If the fire inspection certificate expires after the August 1, 2022 submission of the Annual Report, please submit the new certificate with the Annual Report entries due on November 1, 2022. Please note in the portal that this is the case**

Site 1 Certificate of Occupancy (COO)

[Certificate of Occupancy.pdf](#)

Filename: Certificate of Occupancy.pdf **Size:** 34.4 kB

Site 2 Fire Inspection Report

CHARTER REVISIONS DURING THE 2021-2022 SCHOOL YEAR

n1. Were there any revisions to the school's charter during the 2021-2022 school year? (Please include approved or pending material and non-material charter revisions).

No

o. Has your school's Board of Trustee's approved a budget for the 2021-2022 FY?

Yes

ATTESTATIONS

p. Individual Primarily Responsible for Submitting the Annual Report. (To write type in a phone number with an extension, please use this format: 123-456-7890-3. The dash and number 3 at the end of the phone number refers to the individual's phone extension. Do not type in the work extension or the abbreviation for it - just the dash and the extension number after the phone number).

Name	Richard Santiago
Position	Deputy Superintendent
Phone/Extension	718-794-2341
Email	rsantiago@ccics.org

p. Our signatures (Executive Director/School Leader/Head of School and Board President) below attest that our school has reviewed, understands and will comply with the employee clearance and fingerprint requirements as outlined in Entry 10 and found in the [NYSED CSO Fingerprint Clearance Oct 2019 Memo](#). Click **YES to agree.**

Responses Selected:

Yes

q. Our signatures (Executive Director/School Leader/Head of School and Board President) below attest that all of the information contained herein is truthful and accurate and that this charter school is in compliance with all aspects of its charter, and with all pertinent Federal, State, and local laws, regulations, and rules. We understand that if any information in any part of this report is found to have been deliberately misrepresented, that will constitute grounds for the revocation of our charter. Click **YES** to agree and then use the mouse on your PC or the stylus on your mobile device to sign your name).

Responses Selected:

Yes

Signature, Head of Charter School

.

Signature, President of the Board of Trustees

.

Date

(No response)

Thank you.



Entry 3 Accountability Plan Progress Reports

Incomplete

Instructions

SUNY-Authorized Charter Schools ONLY- Complete Template and Upload to Epicenter

SUNY-authorized charter schools must download an Accountability Plan Progress Report template at

[Accountability Plan Progress Report](#). After completing, SUNY-authorized charter schools must upload the document into the SUNY Epicenter system by **September 15, 2022**. SUNY CSI will forward to NYSED CSO.

PLEASE NOTE: This is a required task, and it is marked optional for administrative purposes only.

Entry 4 - Audited Financial Statements

Incomplete

Required of ALL Charter Schools

ALL SUNY-authorized charter schools must upload the financial statements and related documents in PDF format into the SUNY Epicenter system no later than **November 1, 2022**. SUNY CSI will forward to NYSED CSO. **SUNY-authorized charter schools** are asked to ensure that security features such as password protection are turned off.

ALL Regents, NYCDOE, and Buffalo BOE-authorized charter schools must upload final, audited financial statements to the [Annual Report Portal](#) no later than **November 1, 2022**. Upload the independent auditor's report, any advisory and/or management letter, and the internal controls report as one submission, combined into a PDF file, ensuring that security features such as password protections are removed from all school uploaded documents.

PLEASE NOTE: This task appears as visible and optional task in the online portal until August 1 2022 but will be identified as a required task thereafter and due on November 1, 2022. This is a required task, and it is marked optional for administrative purposes only.

Entry 4a - Audited Financial Report Template (SUNY)

Incomplete

Instructions - SUNY-Authorized Charter Schools ONLY

SUNY-authorized schools must download the Excel spreadsheet entitled "Audited Financial Report Template" at <http://www.newyorkcharters.org/fiscal/>. After completing, schools must upload the document into the SUNY Epicenter system no later than **November 1, 2022**. SUNY CSI will forward to NYSED CSO.

PLEASE NOTE: This is a required task, and it is marked optional for administrative purposes only.

Entry 4c - Additional Financial Documents

Incomplete Hidden from applicant

Instructions - Regents, NYCDOE and Buffalo BOE authorized schools must upload financial documents and submit by **November 1, 2022**. The items listed below should be uploaded, with an explanation if not applicable or available. For example, a "federal Single Audit was not required because the school did not expend federal funds of more than the \$750,000 Threshold."

1. Advisory and/or Management letter
2. Federal Single Audit
3. CSP Agreed-Upon Procedure Report
4. Evidence of Required Escrow Account for each school^[1]
5. Corrective Action Plan for Audit Findings and Management Letter Recommendations

[1] Note: For BOR schools chartered or renewed after the 2017-2018 school year, the escrow account per school is \$100,000.

PLEASE NOTE: This is a required task, and it is marked optional for administrative purposes only.

Entry 4d - Financial Services Contact Information

Incomplete Hidden from applicant

Regents, NYCDOE, and Buffalo BOE authorized schools should enter financial contact information directly into the form within the portal by **November 1, 2022**.

Form for "Financial Services Contact Information"

1. School Based Fiscal Contact Information

	School Based Fiscal Contact Name	School Based Fiscal Contact Email	School Based Fiscal Contact Phone

2. Audit Firm Contact Information

	School Audit Contact Name	School Audit Contact Email	School Audit Contact Phone	Years Working With This Audit Firm

3. If applicable, please provide contact information for the school's outsourced financial services firm.

	Firm Name	Contact Person	Mailing Address	Email	Phone	Years With Firm

Entry 5 - Fiscal Year 2022-2023 Budget

Incomplete

SUNY-authorized charter schools should download the [2022-23 Budget and Quarterly Report Template and the 2022-23 Budget Narrative Questionnaire](#) from the SUNY website and upload the completed template into Epicenter. SUNY CSI will forward to NYSED CSO. **Due November 1, 2022.**

Regents, NYCDOE, and Buffalo BOE authorized charter schools should upload a copy of the school's FY22 Budget using the [2022-2023 Budget Template](#) in the portal or from the Annual Report website. **Due November 1, 2022.**

The assumptions column should be completed for all revenue and expense items unless the item is self-explanatory. Where applicable, reference the page number or section in the application narrative that indicates the assumption being made. For instance, student enrollment would reference the applicable page number in Section I, C of the application narrative.

PLEASE NOTE: This is a required task, and it is marked optional for administrative purposes only.

Entry 6 - Board of Trustees Disclosure of Financial Interest Form

Completed Jul 29 2022

Due on August 1, 2022, each member of the charter school's Board of Trustees who served on a charter school education corporation governing one or more charter schools for any period during the 2021-2022 school year must complete and sign a [Trustee Disclosure of Financial Interest Form](#). Acceptable signature formats include:

- Digitally certified PDF signature (i.e., DocuSign)
- Manual signature (1. download to print, 2. manually sign, 3. scan signed document to PDF, and 4. upload into portal)

All completed forms must be collected and uploaded in .PDF format for each individual member. **The education corporation is responsible for completing the form for trustees who left the board during the reporting year.**

Forms completed from past years will not be accepted. **Only the latest version of the form** (updated in April, 2022) is acceptable.).

Trustees serving on an education corporation that governs more than one school are not required to complete a separate disclosure for each school governed by the education corporation. In the Disclosure of Financial Interest Form, trustees must disclose information relevant to any of the schools served by the governing education corporation.

[ICS 1 2 5 7](#)

Filename: ICS 1 2 5 7.pdf **Size:** 11.6 MB

Entry 7 BOT Membership Table

Completed Jul 8 2022

Instructions

Required of ALL charter schools

ALL charter schools or education corporations governing multiple schools must complete the Board of Trustees Membership Table within the online portal. Please be sure to include and identify parents who are members of the Board of Trustees and indicate whether parents are voting or non-voting members.

Entry 7 BOT Table

1. SUNY-AUTHORIZED charter schools are required to provide information for VOTING Trustees only.
2. REGENTS, NYCDOE, and BUFFALO BOE-AUTHORIZED charter schools are required to provide information for all --VOTING and NON-VOTING-- trustees.

ICAHN CHARTER SCHOOL 1 800000046301

Authorizer:

Who is the authorizer of your charter school?

SUNY

1. 2021-2022 Board Member Information (Enter info for each BOT member)

	Trustee Name	Trustee Email Address	Position on the Board	Committee Affiliations	Voting Member Per By-Laws (Y/N)	Number of Terms Served	Start Date of Current Term (MM/DD /YYYY)	End Date of Current Term (MM/DD /YYYY)	Board Meetings Attended During 2021-2022
1	Gail Golden		Chair	Education	Yes	19	09/01/2021	08/31/2022	10
2	Edward Shanahan		Trustee/Member	Education	Yes	19	09/01/2021	08/31/2022	9
3	Seymour Fliegel		Trustee/Member	Education	Yes	19	09/01/2021	08/31/2022	5 or less

4	Ka en Mandel Baum		Trustee/Member	Finance	Yes	19	09/01/2021	08/31/2022	10
5	Robert Sancho		Trustee/Member	Finance	Yes	19	09/01/2021	08/31/2022	8
6	Diane Fellows		Trustee/Member	Education	Yes	5	09/01/2021	08/31/2022	10
7	Rolando Aviles, Jr.		Parent Rep	Parent	Yes	4	09/01/2021	08/31/2022	5 or less
8									
9									

1a. Are there more than 9 members of the Board of Trustees?

No

2. INFORMATION ABOUT MEMBERS OF THE BOARD OF TRUSTEES

1. SUNY-AUTHORIZED charter schools provide response relative to VOTING Trustees only.
2. REGENTS, NYCDOE, and BUFFALO BOE-AUTHORIZED charter schools provide a response relative to all trustees.

a. Total Number of BOT Members on June 30, 2022	7
b.Total Number of Members Added During 2021-2022	0
c. Total Number of Members who Departed during 2021-2022	0
d.Total Number of members, as set in Bylaws, Resolution or Minutes	7

3. Number of Board meetings held during 2021-2022

10

4. Number of Board meetings scheduled for 2022-2023

10

Total number of Voting Members on June 30, 2022:

7

Total number of Voting Members added during the 2021-2022 school year:

0

Total number of Voting Members who departed during the 2021-2022 school year:

0

Total Maximum Number of Voting members in 2021-2022, as set by the board in bylaws, resolution, or minutes:

7

Thank you.

Entry 8 Board Meeting Minutes

Incomplete Hidden from applicant

Instructions - Required of Regents, NYCDOE, and Buffalo BOE Authorized Schools ONLY

Schools must upload a complete set of monthly board meeting minutes (July 2021-June 2022), which should match the number of meetings held during the 2021-2022 school year, as indicated in the above table. The minutes provided must be the final version approved by the school's Board of Trustees and may be uploaded individually or as one single combined file. Board meeting minutes must be submitted by **August 1, 2022**.

Entry 9 Enrollment & Retention

Completed Jul 8 2022

[Instructions for submitting Enrollment and Retention Efforts](#)

Required of ALL Charter Schools

Describe the good faith efforts the charter school has made in 2021-2022 toward meeting targets to attract and retain the enrollment of Students with Disabilities (SWDs), English Language Learners (ELLs), and students who are economically disadvantaged. In addition, describe the school's plans for meeting or making progress toward meeting its enrollment and retention targets in 2022-2023.

Entry 9 Enrollment and Retention of Special Populations

Recruitment/Attraction Efforts Toward Meeting Targets

	Describe Recruitment Efforts in 2021-2022	Describe Recruitment Plans in 2022-2023
	<p>ICAHN 1-7 has undertaken efforts throughout the charter period to attract and retain students with disabilities and English language learners. During the student application process, school literature in both English and Spanish is distributed throughout CSD 9 for Icahn 1, CSD 11 for Icahn 2-5, CSD 9 and 12 for Icahn 6 and CSD 8 for Icahn 7. Specific community outreach efforts and interactions with local schools serving significant relevant student populations are carried out.</p> <p>Provisions for the attraction and retention of students with disabilities and English language learners are contained in the ICAHN 1-7 Student Enrollment and Retention Plan, which was designed to facilitate the meeting or exceeding of enrollment and retention target student populations established by the SUNY Trustees for:</p> <ul style="list-style-type: none"> • Students with disabilities, • Students who are English language learners • Students who are eligible to participate in the federal free and reduced-price lunch program. <p>Recruitment - Formal recruitment of prospective students with disabilities and those who are English language learners (ELLs) begins each year on December</p>	<p>ICAHN 1-7 has undertaken efforts throughout the charter period to attract and retain students with disabilities and English language learners. During the student application process, school literature in both English and Spanish is distributed throughout CSD 9 for Icahn 1, CSD 11 for Icahn 2-5, CSD 9 and 12 for Icahn 6 and CSD 8 for Icahn 7. Specific community outreach efforts and interactions with local schools serving significant relevant student populations are carried out.</p> <p>Provisions for the attraction and retention of students with disabilities and English language learners are contained in the ICAHN 1-7 Student Enrollment and Retention Plan, which was designed to facilitate the meeting or exceeding of enrollment and retention target student populations established by the SUNY Trustees for:</p> <ul style="list-style-type: none"> • Students with disabilities, • Students who are English language learners • Students who are eligible to participate in the federal free and reduced-price lunch program. <p>Recruitment - Formal recruitment of prospective students with disabilities and those who are English language learners (ELLs) begins each year on December</p>

Economically Disadvantaged

1st. ICAHN 1-7 advertises an open registration process in the English and Spanish languages. If they choose, families of these students can meet with ICAHN 1-7 staff members and review the expectations of the school. ICAHN 1-7 maintains a policy of equitable admissions access to all students in every phase of its admissions process. ICAHN 1-7 shall not discriminate against any student based on race, ethnicity, national origin, gender, or disability or for any other basis that would be unlawful for a public school. Icahn 1-7 shall be open to any child who is eligible under the laws of New York State for admission to a public school, and ICAHN 1-7 shall ensure compliance with all applicable anti-discrimination laws governing public schools, including Title VI of the Civil Rights Act and Paragraph 2854 (2) of the New York Education Law, governing admission to a charter school. New students will be admitted each year without regard to prior measures of achievement or aptitude, athletic ability, disability, handicapped condition, ethnicity, race, creed, gender, national origin, religion, or ancestry. Interested families will submit applications during the period between December 1st and April 1st, at which point students will be accepted. If the number of applicants to ICAHN 1 - 7 exceeds capacity, a lottery or a random selection process will be conducted. The lottery will be held within the first week of April.

1st. ICAHN 1-7 advertises an open registration process in the English and Spanish languages. If they choose, families of these students can meet with ICAHN 1-7 staff members and review the expectations of the school. ICAHN 1-7 maintains a policy of equitable admissions access to all students in every phase of its admissions process. ICAHN 1-7 shall not discriminate against any student based on race, ethnicity, national origin, gender, or disability or for any other basis that would be unlawful for a public school. Icahn 1-7 shall be open to any child who is eligible under the laws of New York State for admission to a public school, and ICAHN 1-7 shall ensure compliance with all applicable anti-discrimination laws governing public schools, including Title VI of the Civil Rights Act and Paragraph 2854 (2) of the New York Education Law, governing admission to a charter school. New students will be admitted each year without regard to prior measures of achievement or aptitude, athletic ability, disability, handicapped condition, ethnicity, race, creed, gender, national origin, religion, or ancestry. Interested families will submit applications during the period between December 1st and April 1st, at which point students will be accepted. If the number of applicants to ICAHN 1 - 7 exceeds capacity, a lottery or a random selection process will be conducted. The lottery will be held within the first week of April.

Outreach - ICAHN 1-7 will undertake the measures below, among others, to recruit student applicants, including students with disabilities and English language learners (and will provide translation services, if necessary, for all promotional materials and any person-to-person interaction requiring an English translation):

- (1) Posting flyers and placing notices in local Spanish language newspapers, supermarkets, churches, community centers, apartment complexes, and local daycare centers
- (2) Conducting open houses at after-school programs and youth centers;
- (3) Visiting local organizations in surrounding neighborhoods, speaking at community meetings and distributing information packets; and
- (4) Canvassing neighborhoods to further reach interested families.
- (5) Email registry used within the local district

Specific measures will be designed and implemented to reach parents for/of:

- Whom English is not their primary language
- Students with disabilities

Outreach - ICAHN 1-7 will undertake the measures below, among others, to recruit student applicants, including students with disabilities and English language learners (and will provide translation services, if necessary, for all promotional materials and any person-to-person interaction requiring an English translation):

- (1) Posting flyers and placing notices in local Spanish language newspapers, supermarkets, churches, community centers, apartment complexes, and local daycare centers
- (2) Conducting open houses at after-school programs and youth centers;
- (3) Visiting local organizations in surrounding neighborhoods, speaking at community meetings and distributing information packets; and
- (4) Canvassing neighborhoods to further reach interested families.
- (5) Email registry used within the local district

Specific measures will be designed and implemented to reach parents for/of:

- Whom English is not their primary language
- Students with disabilities

ICAHN 1-7 has undertaken efforts throughout the charter period to attract and retain students with disabilities and English language learners. During the student

ICAHN 1-7 has undertaken efforts throughout the charter period to attract and retain students with disabilities and English language learners. During the student

application process, school literature in both English and Spanish is distributed throughout CSD 9 for Icahn 1, CSD 11 for Icahn 2-5, CSD 9 and 12 for Icahn 6 and CSD 8 for Icahn 7. Specific community outreach efforts and interactions with local schools serving significant relevant student populations are carried out.

Provisions for the attraction and retention of students with disabilities and English language learners are contained in the ICAHN 1-7 Student Enrollment and Retention Plan, which was designed to facilitate the meeting or exceeding of enrollment and retention target student populations established by the SUNY Trustees for:

- Students with disabilities,
- Students who are English language learners
- Students who are eligible to participate in the federal free and reduced-price lunch program.

Recruitment - Formal recruitment of prospective students with disabilities and those who are English language learners (ELLs) begins each year on December 1st. ICAHN 1-7 advertises an open registration process in the English and Spanish languages. If they choose, families of these students can meet with ICAHN 1-7 staff members and review the expectations of the school. ICAHN 1-7 maintains a policy of equitable admissions access to

application process, school literature in both English and Spanish is distributed throughout CSD 9 for Icahn 1, CSD 11 for Icahn 2-5, CSD 9 and 12 for Icahn 6 and CSD 8 for Icahn 7. Specific community outreach efforts and interactions with local schools serving significant relevant student populations are carried out.

Provisions for the attraction and retention of students with disabilities and English language learners are contained in the ICAHN 1-7 Student Enrollment and Retention Plan, which was designed to facilitate the meeting or exceeding of enrollment and retention target student populations established by the SUNY Trustees for:

- Students with disabilities,
- Students who are English language learners
- Students who are eligible to participate in the federal free and reduced-price lunch program.

Recruitment - Formal recruitment of prospective students with disabilities and those who are English language learners (ELLs) begins each year on December 1st. ICAHN 1-7 advertises an open registration process in the English and Spanish languages. If they choose, families of these students can meet with ICAHN 1-7 staff members and review the expectations of the school. ICAHN 1-7 maintains a policy of equitable admissions access to

English Language Learners

all students in every phase of its admissions process. ICAHN 1-7 shall not discriminate against any student based on race, ethnicity, national origin, gender, or disability or for any other basis that would be unlawful for a public school. Icahn 1-7 shall be open to any child who is eligible under the laws of New York State for admission to a public school, and ICAHN 1-7 shall ensure compliance with all applicable anti-discrimination laws governing public schools, including Title VI of the Civil Rights Act and Paragraph 2854 (2) of the New York Education Law, governing admission to a charter school. New students will be admitted each year without regard to prior measures of achievement or aptitude, athletic ability, disability, handicapped condition, ethnicity, race, creed, gender, national origin, religion, or ancestry. Interested families will submit applications during the period between December 1st and April 1st, at which point students will be accepted. If the number of applicants to ICAHN 1 - 7 exceeds capacity, a lottery or a random selection process will be conducted. The lottery will be held within the first week of April.

Outreach - ICAHN 1-7 will undertake the measures below, among others, to recruit student applicants, including students with disabilities and English language learners (and will provide translation services, if necessary, for all promotional

all students in every phase of its admissions process. ICAHN 1-7 shall not discriminate against any student based on race, ethnicity, national origin, gender, or disability or for any other basis that would be unlawful for a public school. Icahn 1-7 shall be open to any child who is eligible under the laws of New York State for admission to a public school, and ICAHN 1-7 shall ensure compliance with all applicable anti-discrimination laws governing public schools, including Title VI of the Civil Rights Act and Paragraph 2854 (2) of the New York Education Law, governing admission to a charter school. New students will be admitted each year without regard to prior measures of achievement or aptitude, athletic ability, disability, handicapped condition, ethnicity, race, creed, gender, national origin, religion, or ancestry. Interested families will submit applications during the period between December 1st and April 1st, at which point students will be accepted. If the number of applicants to ICAHN 1 - 7 exceeds capacity, a lottery or a random selection process will be conducted. The lottery will be held within the first week of April.

Outreach - ICAHN 1-7 will undertake the measures below, among others, to recruit student applicants, including students with disabilities and English language learners (and will provide translation services, if necessary, for all promotional

materials and any person-to-person interaction requiring an English translation):

- (1) Posting flyers and placing notices in local Spanish language newspapers, supermarkets, churches, community centers, apartment complexes, and local daycare centers
- (2) Conducting open houses at after-school programs and youth centers;
- (3) Visiting local organizations in surrounding neighborhoods, speaking at community meetings and distributing information packets; and
- (4) Canvassing neighborhoods to further reach interested families.
- (5) Email registry used within the local district

Specific measures will be designed and implemented to reach parents for/of:

- Whom English is not their primary language
- Students with disabilities

materials and any person-to-person interaction requiring an English translation):

- (1) Posting flyers and placing notices in local Spanish language newspapers, supermarkets, churches, community centers, apartment complexes, and local daycare centers
- (2) Conducting open houses at after-school programs and youth centers;
- (3) Visiting local organizations in surrounding neighborhoods, speaking at community meetings and distributing information packets; and
- (4) Canvassing neighborhoods to further reach interested families.
- (5) Email registry used within the local district

Specific measures will be designed and implemented to reach parents for/of:

- Whom English is not their primary language
- Students with disabilities

ICAHN 1-7 has undertaken efforts throughout the charter period to attract and retain students with disabilities and English language learners. During the student application process, school literature in both English and Spanish is distributed throughout CSD 9 for Icahn 1, CSD 11 for Icahn 2-5, CSD 9 and 12 for Icahn 6 and CSD 8 for Icahn 7. Specific community outreach efforts and interactions with local schools serving significant relevant

ICAHN 1-7 has undertaken efforts throughout the charter period to attract and retain students with disabilities and English language learners. During the student application process, school literature in both English and Spanish is distributed throughout CSD 9 for Icahn 1, CSD 11 for Icahn 2-5, CSD 9 and 12 for Icahn 6 and CSD 8 for Icahn 7. Specific community outreach efforts and interactions with local schools serving significant relevant

student populations are carried out.

Provisions for the attraction and retention of students with disabilities and English language learners are contained in the ICAHN 1-7 Student Enrollment and Retention Plan, which was designed to facilitate the meeting or exceeding of enrollment and retention target student populations established by the SUNY Trustees for:

- Students with disabilities,
- Students who are English language learners
- Students who are eligible to participate in the federal free and reduced-price lunch program.

Recruitment - Formal recruitment of prospective students with disabilities and those who are English language learners (ELLs) begins each year on December 1st. ICAHN 1-7 advertises an open registration process in the English and Spanish languages. If they choose, families of these students can meet with ICAHN 1-7 staff members and review the expectations of the school. ICAHN 1-7 maintains a policy of equitable admissions access to all students in every phase of its admissions process. ICAHN 1-7 shall not discriminate against any student based on race, ethnicity, national origin, gender, or disability or for any other basis that would be unlawful for a public school. Icahn 1-7 shall be open to any child who is eligible

student populations are carried out.

Provisions for the attraction and retention of students with disabilities and English language learners are contained in the ICAHN 1-7 Student Enrollment and Retention Plan, which was designed to facilitate the meeting or exceeding of enrollment and retention target student populations established by the SUNY Trustees for:

- Students with disabilities,
- Students who are English language learners
- Students who are eligible to participate in the federal free and reduced-price lunch program.

Recruitment - Formal recruitment of prospective students with disabilities and those who are English language learners (ELLs) begins each year on December 1st. ICAHN 1-7 advertises an open registration process in the English and Spanish languages. If they choose, families of these students can meet with ICAHN 1-7 staff members and review the expectations of the school. ICAHN 1-7 maintains a policy of equitable admissions access to all students in every phase of its admissions process. ICAHN 1-7 shall not discriminate against any student based on race, ethnicity, national origin, gender, or disability or for any other basis that would be unlawful for a public school. Icahn 1-7 shall be open to any child who is eligible

Students with Disabilities

under the laws of New York State for admission to a public school, and ICAHN 1-7 shall ensure compliance with all applicable anti-discrimination laws governing public schools, including Title VI of the Civil Rights Act and Paragraph 2854 (2) of the New York Education Law, governing admission to a charter school. New students will be admitted each year without regard to prior measures of achievement or aptitude, athletic ability, disability, handicapped condition, ethnicity, race, creed, gender, national origin, religion, or ancestry. Interested families will submit applications during the period between December 1st and April 1st, at which point students will be accepted. If the number of applicants to ICAHN 1 - 7 exceeds capacity, a lottery or a random selection process will be conducted. The lottery will be held within the first week of April.

Outreach - ICAHN 1-7 will undertake the measures below, among others, to recruit student applicants, including students with disabilities and English language learners (and will provide translation services, if necessary, for all promotional materials and any person-to-person interaction requiring an English translation):

(1) Posting flyers and placing notices in local Spanish language newspapers, supermarkets, churches, community centers, apartment complexes, and local

under the laws of New York State for admission to a public school, and ICAHN 1-7 shall ensure compliance with all applicable anti-discrimination laws governing public schools, including Title VI of the Civil Rights Act and Paragraph 2854 (2) of the New York Education Law, governing admission to a charter school. New students will be admitted each year without regard to prior measures of achievement or aptitude, athletic ability, disability, handicapped condition, ethnicity, race, creed, gender, national origin, religion, or ancestry. Interested families will submit applications during the period between December 1st and April 1st, at which point students will be accepted. If the number of applicants to ICAHN 1 - 7 exceeds capacity, a lottery or a random selection process will be conducted. The lottery will be held within the first week of April.

Outreach - ICAHN 1-7 will undertake the measures below, among others, to recruit student applicants, including students with disabilities and English language learners (and will provide translation services, if necessary, for all promotional materials and any person-to-person interaction requiring an English translation):

(1) Posting flyers and placing notices in local Spanish language newspapers, supermarkets, churches, community centers, apartment complexes, and local

	<p>daycare centers (2) Conducting open houses at after-school programs and youth centers; (3) Visiting local organizations in surrounding neighborhoods, speaking at community meetings and distributing information packets; and (4) Canvassing neighborhoods to further reach interested families. (5) Email registry used within the local district</p> <p>Specific measures will be designed and implemented to reach parents for/of:</p> <ul style="list-style-type: none"> • Whom English is not their primary language • Students with disabilities 	<p>daycare centers (2) Conducting open houses at after-school programs and youth centers; (3) Visiting local organizations in surrounding neighborhoods, speaking at community meetings and distributing information packets; and (4) Canvassing neighborhoods to further reach interested families. (5) Email registry used within the local district</p> <p>Specific measures will be designed and implemented to reach parents for/of:</p> <ul style="list-style-type: none"> • Whom English is not their primary language • Students with disabilities
--	--	--

Retention Efforts Toward Meeting Targets

	Describe Retention Efforts in 2021-2022	Describe Retention Plans in 2022-2023
	<p>ICAHN 1-7 has undertaken efforts throughout the charter period to attract and retain students with disabilities and English language learners. During the student application process, school literature in both English and Spanish is distributed throughout CSD 9 for Icahn 1, CSD 11 for Icahn 2-5, CSD 9 and 12 for Icahn 6 and CSD 8 for Icahn 7. Specific community outreach efforts and interactions with local schools serving significant relevant student populations are carried out.</p>	<p>ICAHN 1-7 has undertaken efforts throughout the charter period to attract and retain students with disabilities and English language learners. During the student application process, school literature in both English and Spanish is distributed throughout CSD 9 for Icahn 1, CSD 11 for Icahn 2-5, CSD 9 and 12 for Icahn 6 and CSD 8 for Icahn 7. Specific community outreach efforts and interactions with local schools serving significant relevant student populations are carried out.</p>

Provisions for the attraction and retention of students with disabilities and English language learners are contained in the ICAHN 1-7 Student Enrollment and Retention Plan, which was designed to facilitate the meeting or exceeding of enrollment and retention target student populations established by the SUNY Trustees for:

- Students with disabilities,
- Students who are English language learners
- Students who are eligible to participate in the federal free and reduced-price lunch program.

Recruitment - Formal recruitment of prospective students with disabilities and those who are English language learners (ELLs) begins each year on December 1st. ICAHN 1-7 advertises an open registration process in the English and Spanish languages. If they choose, families of these students can meet with ICAHN 1-7 staff members and review the expectations of the school. ICAHN 1-7 maintains a policy of equitable admissions access to all students in every phase of its admissions process. ICAHN 1-7 shall not discriminate against any student based on race, ethnicity, national origin, gender, or disability or for any other basis that would be unlawful for a public school. Icahn 1-7 shall be open to any child who is eligible under the laws of New York State for admission to a public school,

Provisions for the attraction and retention of students with disabilities and English language learners are contained in the ICAHN 1-7 Student Enrollment and Retention Plan, which was designed to facilitate the meeting or exceeding of enrollment and retention target student populations established by the SUNY Trustees for:

- Students with disabilities,
- Students who are English language learners
- Students who are eligible to participate in the federal free and reduced-price lunch program.

Recruitment - Formal recruitment of prospective students with disabilities and those who are English language learners (ELLs) begins each year on December 1st. ICAHN 1-7 advertises an open registration process in the English and Spanish languages. If they choose, families of these students can meet with ICAHN 1-7 staff members and review the expectations of the school. ICAHN 1-7 maintains a policy of equitable admissions access to all students in every phase of its admissions process. ICAHN 1-7 shall not discriminate against any student based on race, ethnicity, national origin, gender, or disability or for any other basis that would be unlawful for a public school. Icahn 1-7 shall be open to any child who is eligible under the laws of New York State for admission to a public school,

Economically Disadvantaged

and ICAHN 1-7 shall ensure compliance with all applicable anti-discrimination laws governing public schools, including Title VI of the Civil Rights Act and Paragraph 2854 (2) of the New York Education Law, governing admission to a charter school. New students will be admitted each year without regard to prior measures of achievement or aptitude, athletic ability, disability, handicapped condition, ethnicity, race, creed, gender, national origin, religion, or ancestry. Interested families will submit applications during the period between December 1st and April 1st, at which point students will be accepted. If the number of applicants to ICAHN 1 - 7 exceeds capacity, a lottery or a random selection process will be conducted. The lottery will be held within the first week of April.

Outreach - ICAHN 1-7 will undertake the measures below, among others, to recruit student applicants, including students with disabilities and English language learners (and will provide translation services, if necessary, for all promotional materials and any person-to-person interaction requiring an English translation):

- (1) Posting flyers and placing notices in local Spanish language newspapers, supermarkets, churches, community centers, apartment complexes, and local daycare centers
- (2) Conducting open houses at

and ICAHN 1-7 shall ensure compliance with all applicable anti-discrimination laws governing public schools, including Title VI of the Civil Rights Act and Paragraph 2854 (2) of the New York Education Law, governing admission to a charter school. New students will be admitted each year without regard to prior measures of achievement or aptitude, athletic ability, disability, handicapped condition, ethnicity, race, creed, gender, national origin, religion, or ancestry. Interested families will submit applications during the period between December 1st and April 1st, at which point students will be accepted. If the number of applicants to ICAHN 1 - 7 exceeds capacity, a lottery or a random selection process will be conducted. The lottery will be held within the first week of April.

Outreach - ICAHN 1-7 will undertake the measures below, among others, to recruit student applicants, including students with disabilities and English language learners (and will provide translation services, if necessary, for all promotional materials and any person-to-person interaction requiring an English translation):

- (1) Posting flyers and placing notices in local Spanish language newspapers, supermarkets, churches, community centers, apartment complexes, and local daycare centers
- (2) Conducting open houses at

	<p>after-school programs and youth centers;</p> <p>(3) Visiting local organizations in surrounding neighborhoods, speaking at community meetings and distributing information packets; and</p> <p>(4) Canvassing neighborhoods to further reach interested families.</p> <p>(5) Email registry used within the local district</p> <p>Specific measures will be designed and implemented to reach parents for/of:</p> <ul style="list-style-type: none"> • Whom English is not their primary language • Students with disabilities 	<p>after-school programs and youth centers;</p> <p>(3) Visiting local organizations in surrounding neighborhoods, speaking at community meetings and distributing information packets; and</p> <p>(4) Canvassing neighborhoods to further reach interested families.</p> <p>(5) Email registry used within the local district</p> <p>Specific measures will be designed and implemented to reach parents for/of:</p> <ul style="list-style-type: none"> • Whom English is not their primary language • Students with disabilities
	<p>ICAHN 1-7 has undertaken efforts throughout the charter period to attract and retain students with disabilities and English language learners. During the student application process, school literature in both English and Spanish is distributed throughout CSD 9 for Icahn 1, CSD 11 for Icahn 2-5, CSD 9 and 12 for Icahn 6 and CSD 8 for Icahn 7. Specific community outreach efforts and interactions with local schools serving significant relevant student populations are carried out.</p> <p>Provisions for the attraction and retention of students with disabilities and English language learners are contained in the ICAHN 1-7 Student Enrollment and Retention Plan, which was designed to facilitate the meeting or exceeding of</p>	<p>ICAHN 1-7 has undertaken efforts throughout the charter period to attract and retain students with disabilities and English language learners. During the student application process, school literature in both English and Spanish is distributed throughout CSD 9 for Icahn 1, CSD 11 for Icahn 2-5, CSD 9 and 12 for Icahn 6 and CSD 8 for Icahn 7. Specific community outreach efforts and interactions with local schools serving significant relevant student populations are carried out.</p> <p>Provisions for the attraction and retention of students with disabilities and English language learners are contained in the ICAHN 1-7 Student Enrollment and Retention Plan, which was designed to facilitate the meeting or exceeding of</p>

English Language Learners

enrollment and retention target student populations established by the SUNY Trustees for:

- Students with disabilities,
- Students who are English language learners
- Students who are eligible to participate in the federal free and reduced-price lunch program.

Recruitment - Formal recruitment of prospective students with disabilities and those who are English language learners (ELLs) begins each year on December 1st. ICAHN 1-7 advertises an open registration process in the English and Spanish languages. If they choose, families of these students can meet with ICAHN 1-7 staff members and review the expectations of the school. ICAHN 1-7 maintains a policy of equitable admissions access to all students in every phase of its admissions process. ICAHN 1-7 shall not discriminate against any student based on race, ethnicity, national origin, gender, or disability or for any other basis that would be unlawful for a public school. Icahn 1-7 shall be open to any child who is eligible under the laws of New York State for admission to a public school, and ICAHN 1-7 shall ensure compliance with all applicable anti-discrimination laws governing public schools, including Title VI of the Civil Rights Act and Paragraph 2854 (2) of the New York Education Law, governing admission to a charter school. New students will

enrollment and retention target student populations established by the SUNY Trustees for:

- Students with disabilities,
- Students who are English language learners
- Students who are eligible to participate in the federal free and reduced-price lunch program.

Recruitment - Formal recruitment of prospective students with disabilities and those who are English language learners (ELLs) begins each year on December 1st. ICAHN 1-7 advertises an open registration process in the English and Spanish languages. If they choose, families of these students can meet with ICAHN 1-7 staff members and review the expectations of the school. ICAHN 1-7 maintains a policy of equitable admissions access to all students in every phase of its admissions process. ICAHN 1-7 shall not discriminate against any student based on race, ethnicity, national origin, gender, or disability or for any other basis that would be unlawful for a public school. Icahn 1-7 shall be open to any child who is eligible under the laws of New York State for admission to a public school, and ICAHN 1-7 shall ensure compliance with all applicable anti-discrimination laws governing public schools, including Title VI of the Civil Rights Act and Paragraph 2854 (2) of the New York Education Law, governing admission to a charter school. New students will

be admitted each year without regard to prior measures of achievement or aptitude, athletic ability, disability, handicapped condition, ethnicity, race, creed, gender, national origin, religion, or ancestry. Interested families will submit applications during the period between December 1st and April 1st, at which point students will be accepted. If the number of applicants to ICAHN 1 - 7 exceeds capacity, a lottery or a random selection process will be conducted. The lottery will be held within the first week of April.

Outreach - ICAHN 1-7 will undertake the measures below, among others, to recruit student applicants, including students with disabilities and English language learners (and will provide translation services, if necessary, for all promotional materials and any person-to-person interaction requiring an English translation):

- (1) Posting flyers and placing notices in local Spanish language newspapers, supermarkets, churches, community centers, apartment complexes, and local daycare centers
- (2) Conducting open houses at after-school programs and youth centers;
- (3) Visiting local organizations in surrounding neighborhoods, speaking at community meetings and distributing information packets; and
- (4) Canvassing neighborhoods to further reach interested families.

be admitted each year without regard to prior measures of achievement or aptitude, athletic ability, disability, handicapped condition, ethnicity, race, creed, gender, national origin, religion, or ancestry. Interested families will submit applications during the period between December 1st and April 1st, at which point students will be accepted. If the number of applicants to ICAHN 1 - 7 exceeds capacity, a lottery or a random selection process will be conducted. The lottery will be held within the first week of April.

Outreach - ICAHN 1-7 will undertake the measures below, among others, to recruit student applicants, including students with disabilities and English language learners (and will provide translation services, if necessary, for all promotional materials and any person-to-person interaction requiring an English translation):

- (1) Posting flyers and placing notices in local Spanish language newspapers, supermarkets, churches, community centers, apartment complexes, and local daycare centers
- (2) Conducting open houses at after-school programs and youth centers;
- (3) Visiting local organizations in surrounding neighborhoods, speaking at community meetings and distributing information packets; and
- (4) Canvassing neighborhoods to further reach interested families.

	<p>(5) Email registry used within the local district</p> <p>Specific measures will be designed and implemented to reach parents for/of:</p> <ul style="list-style-type: none"> • Whom English is not their primary language • Students with disabilities 	<p>(5) Email registry used within the local district</p> <p>Specific measures will be designed and implemented to reach parents for/of:</p> <ul style="list-style-type: none"> • Whom English is not their primary language • Students with disabilities
	<p>ICAHN 1-7 has undertaken efforts throughout the charter period to attract and retain students with disabilities and English language learners. During the student application process, school literature in both English and Spanish is distributed throughout CSD 9 for Icahn 1, CSD 11 for Icahn 2-5, CSD 9 and 12 for Icahn 6 and CSD 8 for Icahn 7. Specific community outreach efforts and interactions with local schools serving significant relevant student populations are carried out.</p> <p>Provisions for the attraction and retention of students with disabilities and English language learners are contained in the ICAHN 1-7 Student Enrollment and Retention Plan, which was designed to facilitate the meeting or exceeding of enrollment and retention target student populations established by the SUNY Trustees for:</p> <ul style="list-style-type: none"> • Students with disabilities, • Students who are English language learners • Students who are eligible to participate in the federal free and 	<p>ICAHN 1-7 has undertaken efforts throughout the charter period to attract and retain students with disabilities and English language learners. During the student application process, school literature in both English and Spanish is distributed throughout CSD 9 for Icahn 1, CSD 11 for Icahn 2-5, CSD 9 and 12 for Icahn 6 and CSD 8 for Icahn 7. Specific community outreach efforts and interactions with local schools serving significant relevant student populations are carried out.</p> <p>Provisions for the attraction and retention of students with disabilities and English language learners are contained in the ICAHN 1-7 Student Enrollment and Retention Plan, which was designed to facilitate the meeting or exceeding of enrollment and retention target student populations established by the SUNY Trustees for:</p> <ul style="list-style-type: none"> • Students with disabilities, • Students who are English language learners • Students who are eligible to participate in the federal free and

Students with Disabilities

reduced-price lunch program.

Recruitment - Formal recruitment of prospective students with disabilities and those who are English language learners (ELLs) begins each year on December 1st. ICAHN 1-7 advertises an open registration process in the English and Spanish languages. If they choose, families of these students can meet with ICAHN 1-7 staff members and review the expectations of the school. ICAHN 1-7 maintains a policy of equitable admissions access to all students in every phase of its admissions process. ICAHN 1-7 shall not discriminate against any student based on race, ethnicity, national origin, gender, or disability or for any other basis that would be unlawful for a public school. Icahn 1-7 shall be open to any child who is eligible under the laws of New York State for admission to a public school, and ICAHN 1-7 shall ensure compliance with all applicable anti-discrimination laws governing public schools, including Title VI of the Civil Rights Act and Paragraph 2854 (2) of the New York Education Law, governing admission to a charter school. New students will be admitted each year without regard to prior measures of achievement or aptitude, athletic ability, disability, handicapped condition, ethnicity, race, creed, gender, national origin, religion, or ancestry. Interested families will submit applications during the period between December

reduced-price lunch program.

Recruitment - Formal recruitment of prospective students with disabilities and those who are English language learners (ELLs) begins each year on December 1st. ICAHN 1-7 advertises an open registration process in the English and Spanish languages. If they choose, families of these students can meet with ICAHN 1-7 staff members and review the expectations of the school. ICAHN 1-7 maintains a policy of equitable admissions access to all students in every phase of its admissions process. ICAHN 1-7 shall not discriminate against any student based on race, ethnicity, national origin, gender, or disability or for any other basis that would be unlawful for a public school. Icahn 1-7 shall be open to any child who is eligible under the laws of New York State for admission to a public school, and ICAHN 1-7 shall ensure compliance with all applicable anti-discrimination laws governing public schools, including Title VI of the Civil Rights Act and Paragraph 2854 (2) of the New York Education Law, governing admission to a charter school. New students will be admitted each year without regard to prior measures of achievement or aptitude, athletic ability, disability, handicapped condition, ethnicity, race, creed, gender, national origin, religion, or ancestry. Interested families will submit applications during the period between December

1st and April 1st, at which point students will be accepted. If the number of applicants to ICAHN 1 - 7 exceeds capacity, a lottery or a random selection process will be conducted. The lottery will be held within the first week of April.

Outreach - ICAHN 1-7 will undertake the measures below, among others, to recruit student applicants, including students with disabilities and English language learners (and will provide translation services, if necessary, for all promotional materials and any person-to-person interaction requiring an English translation):

- (1) Posting flyers and placing notices in local Spanish language newspapers, supermarkets, churches, community centers, apartment complexes, and local daycare centers
- (2) Conducting open houses at after-school programs and youth centers;
- (3) Visiting local organizations in surrounding neighborhoods, speaking at community meetings and distributing information packets; and
- (4) Canvassing neighborhoods to further reach interested families.
- (5) Email registry used within the local district

Specific measures will be designed and implemented to reach parents for/of:

- Whom English is not their primary language

1st and April 1st, at which point students will be accepted. If the number of applicants to ICAHN 1 - 7 exceeds capacity, a lottery or a random selection process will be conducted. The lottery will be held within the first week of April.

Outreach - ICAHN 1-7 will undertake the measures below, among others, to recruit student applicants, including students with disabilities and English language learners (and will provide translation services, if necessary, for all promotional materials and any person-to-person interaction requiring an English translation):

- (1) Posting flyers and placing notices in local Spanish language newspapers, supermarkets, churches, community centers, apartment complexes, and local daycare centers
- (2) Conducting open houses at after-school programs and youth centers;
- (3) Visiting local organizations in surrounding neighborhoods, speaking at community meetings and distributing information packets; and
- (4) Canvassing neighborhoods to further reach interested families.
- (5) Email registry used within the local district

Specific measures will be designed and implemented to reach parents for/of:

- Whom English is not their primary language

Entry 10 - Teacher and Administrator Attrition

Completed Jul 8 2022

Form for "Entry 10 - Teacher and Administrator Attrition" Revised to Employee Fingerprint Requirements Attestation

A. TEACH System - Employee Clearance

Charter schools must ensure that all prospective employees^[1] receive clearance through [the NYSED Office of School Personnel Review and Accountability](#) (OSPRA) prior to employment. **This includes paraprofessionals and other school personnel who are provided or assigned by the district of location, or related/contracted service providers.** After an employee has been cleared, schools are required to maintain proof of such clearance in the file of each employee. For the safety of all students, charter schools must take immediate steps to terminate the employment of individuals who have been denied clearance. Once the employees have been terminated, the school must terminate the request for clearance in the TEACH system.

In the Annual Report, charter schools are asked to confirm that all employees have been cleared through the NYSED TEACH system; and, if denied clearance, confirm that the individual or employee has been removed from the TEACH system, and is not employed by the school.

^[1] Employees who must be cleared include, but are not limited to, teachers, administrative staff, janitors, security personnel and cafeteria workers, and other staff who are present when children are in the school building. **This includes paraprofessionals and other school personnel that are provided or assigned by the district of location, as well as related/contracted service providers.** See NYSED memorandum dated October 1, 2019 at <http://www.nysed.gov/common/nysed/files/programs/charter-schools/employeefingerprintoct19.pdf> or visit the NYSED website at: <http://www.highered.nysed.gov/tsei/ospra/fingerprintingcharts.html> for more information regarding who must be fingerprinted. Also see, 8 NYCRR §87.2.

B. Emergency Conditional Clearances

Emergency Conditional Clearances

Charter schools are **strongly discouraged** from using the emergency conditional clearance provisions for prospective employees. This is because the school must request clearance through NYSED TEACH, and the school's emergency conditional clearance of the employee terminates automatically once the school receives notification from NYSED regarding the clearance request. Status notification is provided for all prospective employees through the NYSED TEACH portal within 48 hours after the clearance request is submitted. Therefore, at most, a school's emergency conditional clearance will be valid for only 48 hours after approval by the board.

Schools are not permitted to renew or in any way re-establish a prospective employee's emergency conditional clearance after status notification is sent by NYSED through the TEACH portal.

Schools are asked to attest that they have reviewed and understand these requirements. More information can be found in the memo at [NYSED CSO Employee Clearance and Fingerprint Memo 10-2019](#).

Attestation

Responses Selected:

I hereby attest that the school has reviewed, understands, and will comply with these requirements.

Entry 11 Percent of Uncertified Teachers

In Progress Last edited: Jul 8 2022 Hidden from applicant

Instructions

Required of Regents, NYCDOE, and Buffalo BOE Authorized Charter Schools ONLY

The table below reflects the information collected through the online portal for compliance with New York State Education Law 2854(3)(a-1) for teaching staff qualifications. Uncertified teachers are those not certified pursuant to the State Certification Requirements established by the NYSED Commissioner of Education.

Enter the relevant full-time equivalent (FTE) count of teachers in each column. For example, a school with 20 full-time teachers and 5 half-time teachers would have an FTE count of 22.5.

Entry 11 Uncertified Teachers

School Name:

Instructions for Reporting Percent of Uncertified Teachers

Required of Regents, NYCDOE, and Buffalo BOE Authorized Charter Schools

The table below reflects the information collected through the online portal for compliance with New York State Education Law 2854(3)(a-1) for teaching staff qualifications. Uncertified teachers are those not certified pursuant to the State Certification Requirements established by the NYSED Commissioner of Education. Enter the relevant full-time equivalent (FTE) count of teachers in each column. For example, a school with 20 full-time teachers and 5 half-time teachers would have an FTE count of 22.5.

If more than one line applies to a teacher, please include in only one FTE uncertified category. Please do not include paraprofessionals, such as teacher aides.

CATEGORY A. 30% OR 5 UNCERTIFIED TEACHERS WHICHEVER IS LESS

	FTE Count
i. FTE count of uncertified teacher with at least three years of elementary, middle or secondary classroom teaching experience (as of June 30, 2022)	
ii. FTE count of uncertified teachers who are tenured or tenure track college faculty (as of June 30, 2022)	
iii. FTE count of uncertified teachers with two years of Teach for America experience (as of June 30, 2022)	
iv. FTE count of uncertified teachers with exceptional business, professional, artistic, athletic, or military experience (as June 30, 2022)	
Total Category A: 5 or 30% whichever is less	0

CATEGORY B. PLUS FIVE UNCERTIFIED TEACHERS IN MATHEMATICS, SCIENCE, COMPUTER SCIENCE, TECHNOLOGY OR CAREER AND TECHNICAL EDUCATION.

	FTE Count
i. Mathematics	
ii. Science	
iii. Computer Science	
iv. Technology	
v. Career and Technical Education	
Total Category B: not to exceed 5	0

CATEGORY C: PLUS 5 ADDITIONAL UNCERTIFIED TEACHERS

	FTE Count
i. FTE count of uncertified teacher with at least three years of elementary, middle or secondary classroom teaching experience (as of June 30, 2022)	
ii. FTE count of uncertified teachers who are tenured or tenure track college faculty (as of June 30, 2022)	
iii. FTE count of uncertified teachers with two years of Teach for America experience (as of June 30, 2022)	
iv. FTE count of uncertified teachers with exceptional business, professional, artistic, athletic, or military experience (as June 30, 2022)	
Total Category C: not to exceed 5	0

TOTAL FTE COUNT OF UNCERTIFIED TEACHERS (Sum of Categories A, B AND C)

(Include teachers who do not fit in one of these categories or if did fit would exceed the numerical limits for that category)

	FTE Count
Total	

CATEGORY D: TOTAL FTE COUNT OF UNCATEGORIZED, UNCERTIFIED TEACHERS

(Include teachers who do not fit in one of these categories or if did fit would exceed the numerical limits for that category)

	FTE Count
Total Category D	

CATEGORY E: TOTAL FTE COUNT OF CERTIFIED TEACHERS

	FTE Count
Total Category E	

CATEGORY F: TOTAL FTE COUNT OF ALL TEACHERS

Please do not include paraprofessionals, such as teacher aides.

	FTE Count
Total Category F	

Thank you.



Entry 12 Organization Chart

Completed Jul 8 2022 Hidden from applicant

Instructions

Required of Regents, NYCDOE, and Buffalo BOE Authorized Charter Schools ONLY

Upload the 2021-2022 **Organization Chart**. The organization chart should include position titles and reporting relationships. Employee names should **not** appear on the chart.

Icahn Charter School Organization Chart

Filename: Icahn Charter School Organization Chart.pdf **Size:** 89.0 kB

Entry 13 School Calendar

Completed Jul 8 2022

[Instructions for submitting School Calendar](#)

Required of ALL Charter Schools

If the charter school has a tentative calendar based on available information and guidance at the time, please submit with the August 1, 2022 submission. Charter schools must upload a final school calendar into the portal and may do so at any time but no later than **September 15, 2022**.

School calendars must meet the [minimum instructional requirements](#) as required of other public schools *"... unless the school's charter requires more instructional time than is required under the regulations."*

Board of Regents-authorized charter schools also are required to submit school calendars that clearly indicate the start and end date of the instructional year AND the number of instructional hours and/or instructional days for each month. See an example of a calendar showing the requested information. Schools are encouraged to use a calendar template and ensure there is a monthly tally of instructional days.

PLEASE NOTE: This is a required task, and it is marked optional for administrative purposes only.

FINAL SY22-23 Family Calendar

Filename: FINAL SY22 23 Family Calendar.pdf **Size:** 202.2 kB

Entry 14 Links to Critical Documents on School Website

Completed Jul 8 2022

Instructions

Required of ALL Charter Schools noting that SUNY-authorized charter schools are not required to submit item 5: Authorizer-approved DASA policy and NYSED-Approved School Discipline Policy

By law, each charter school is required to maintain certain notices and policies listed on its website. Please insert the [link](#) from the school's website for each of the items:

1. Current Annual Report (i.e., 2021-2022 Annual Report);[\[1\]](#)
2. Board meeting notices, agendas and documents;
3. New York State School Report Card;
4. Authorizer-approved DASA Policy and NYSED-Approved School Discipline Policy **(For Regents, NYCDOE, and Buffalo BOE-Authorized Charter Schools ONLY)**;

5. District-wide safety plan, not a building level safety plan (as per the September 2021 [Emergency Response Plan Memo](#);
6. Authorizer-approved FOIL Policy; and
7. Subject matter list of FOIL records. (Example: See [NYSED Subject Matter List](#))

[1] Each charter school is required to make the Annual Report publicly available by August 1 and to post on their respective charter school website. Each school should post an updated and complete version to include accountability data and financial statements that are not or may not be available until after the August deadline (i.e., Repost when financials have been submitted in November.)

Form for Entry 14 Links to Critical Documents on School Website

School Name: Icahn Charter School 1

Required of ALL Charter Schools noting that SUNY-authorized charter schools are not required to submit item 4: Authorizer-approved DASA policy and NYSED-Approved School Discipline Policy

By law, each charter school is required to maintain certain notices and policies listed on its website. Please insert the link from the school’s website for each of the items:

	Link to Documents
1. Current Annual Report (i.e., 2021-2022 Annual Report)	http://www.ica hncharterschool1.org/
2. Board meeting notices, agendas and documents	http://www.ica hncharterschool1.org/
3. New York State School Report Card	http://www.ica hncharterschool1.org/
4. Authorizer-approved DASA Policy and NYSED-Approved School Discipline Policy (For Regents, NYCDOE, and Buffalo BOE-Authorized Charter Schools ONLY)	http://www.ica hncharterschool1.org/
5. District-wide safety plan, not a building level safety plan (as per the September 2021 Emergency Response Plan Memo	http://www.ica hncharterschool1.org/
6. Authorizer-approved FOIL Policy	http://www.ica hncharterschool1.org/
7. Subject matter list of FOIL records. (Example: See NYSED Subject Matter List)	http://www.ica hncharterschool1.org/

Thank you.



Entry 15 Staff Roster

Incomplete Hidden from applicant

INSTRUCTIONS

Required of Regents and NYCDOE-authorized Charter Schools ONLY

Please click on the MS Excel [Faculty/Staff Roster Template](#) and provide the following information for **ANY and ALL** instructional and non-instructional employees.

Use of the 2021-2022 Annual Report Faculty/Staff roster template is required. Each of the data elements, with the exception of the Notes, are required, and use of the drop-down options, when provided, is also required. Reminders: Please use the notes section provided to add any additional information as deemed necessary. Failure to adhere to the guidelines and validations in the Staff Roster Template will result in a resubmission of a fully corrected roster.

Please note the roster should include all staff employed any point from July 1, 2021 to June 30, 2022, including those employed on June 30th.

Financial Statements with Reports of
Independent Certified Public
Accountants

Icahn Charter School 1

June 30, 2022 and 2021

Contents

	Page
Report of Independent Certified Public Accountants	3
Financial Statements	
Statements of financial position	5
Statements of activities	6
Statement of functional expenses	7
Statements of cash flows	9
Notes to financial statements	10
Supplementary Information	
Report of Independent Certified Public Accountants on Internal Control Over Financial Reporting and on Compliance and Other Matters Required by <i>Government Auditing Standards</i>	19

GRANT THORNTON LLP

186 Wood Ave. S., 4th Floor
Iselin, NJ 08830

D +1 212 599 0100

F +1 212 370 4520

REPORT OF INDEPENDENT CERTIFIED PUBLIC ACCOUNTANTS

To the Board of Directors of
Icahn Charter School 1

Opinion

We have audited the financial statements of Icahn Charter School 1 (the “Charter School”), which comprise the statements of financial position as of June 30, 2022 and 2021, and the related statements of activities, functional expenses, and cash flows for the years then ended, and the related notes to the financial statements.

In our opinion, the accompanying financial statements present fairly, in all material respects, the financial position of the Charter School as of June 30, 2022 and 2021, and the changes in its net assets and its cash flows for the years then ended in accordance with accounting principles generally accepted in the United States of America.

Basis for opinion

We conducted our audits of the financial statements in accordance with auditing standards generally accepted in the United States of America (US GAAS). Our responsibilities under those standards are further described in the Auditor’s Responsibilities for the Audit of the Financial Statements section of our report. We are required to be independent of the Charter School and to meet our other ethical responsibilities in accordance with the relevant ethical requirements relating to our audits. We believe that the audit evidence we have obtained is sufficient and appropriate to provide a basis for our audit opinion.

Responsibilities of management for the financial statements

Management is responsible for the preparation and fair presentation of the financial statements in accordance with accounting principles generally accepted in the United States of America, and for the design, implementation, and maintenance of internal control relevant to the preparation and fair presentation of financial statements that are free from material misstatement, whether due to fraud or error.

In preparing the financial statements, management is required to evaluate whether there are conditions or events, considered in the aggregate, that raise substantial doubt about the Charter School’s ability to continue as a going concern for one year after the date the financial statements are available to be issued.

Auditor’s responsibilities for the audit of the financial statements

Our objectives are to obtain reasonable assurance about whether the financial statements as a whole are free from material misstatement, whether due to fraud or error, and to issue an auditor’s report that includes our opinion. Reasonable assurance is a high level of assurance but is not absolute assurance and therefore is not a guarantee that an audit conducted in accordance with US GAAS will always detect a material misstatement when it exists. The risk of not detecting a material misstatement resulting from fraud is higher than for one resulting from error, as fraud

may involve collusion, forgery, intentional omissions, misrepresentations, or the override of internal control. Misstatements are considered material if there is a substantial likelihood that, individually or in the aggregate, they would influence the judgment made by a reasonable user based on the financial statements.

In performing an audit in accordance with US GAAS, we:

- Exercise professional judgment and maintain professional skepticism throughout the audit.
- Identify and assess the risks of material misstatement of the financial statements, whether due to fraud or error, and design and perform audit procedures responsive to those risks. Such procedures include examining, on a test basis, evidence regarding the amounts and disclosures in the financial statements.
- Obtain an understanding of internal control relevant to the audit in order to design audit procedures that are appropriate in the circumstances, but not for the purpose of expressing an opinion on the effectiveness of the Charter School's internal control. Accordingly, no such opinion is expressed.
- Evaluate the appropriateness of accounting policies used and the reasonableness of significant accounting estimates made by management, as well as evaluate the overall presentation of the financial statements.
- Conclude whether, in our judgment, there are conditions or events, considered in the aggregate, that raise substantial doubt about the Charter School's ability to continue as a going concern for a reasonable period of time.

We are required to communicate with those charged with governance regarding, among other matters, the planned scope and timing of the audit, significant audit findings, and certain internal control-related matters that we identified during the audit.

Other reporting required by *Government Auditing Standards*

In accordance with *Government Auditing Standards*, we have also issued our report dated November 1, 2022, on our consideration of the Charter School's internal control over financial reporting and on our tests of its compliance with certain provisions of laws, regulations, contracts, and grant agreements and other matters. The purpose of that report is solely to describe the scope of our testing of internal control over financial reporting and compliance and the results of that testing, and not to provide an opinion on the effectiveness of the Charter School's internal control over financial reporting or on compliance. That report is an integral part of an audit performed in accordance with *Government Auditing Standards* in considering the Charter School's internal control over financial reporting and compliance.



Iselin, New Jersey
November 1, 2022

Icahn Charter School 1

STATEMENTS OF FINANCIAL POSITION

June 30, 2022 and 2021

	<u>2022</u>	<u>2021</u>
ASSETS		
Cash and cash equivalents	\$ 1,499,402	\$ 1,747,443
Restricted cash	75,000	75,000
Grants and contracts receivable	613,669	304,934
Due from school districts	83,155	57,184
Prepaid expenses	15,571	20,370
Contributions and other receivables	433,126	766,417
Other assets	36,212	-
Capital assets, net	8,830,251	9,490,524
	<u>8,830,251</u>	<u>9,490,524</u>
Total assets	<u>\$ 11,586,386</u>	<u>\$ 12,461,872</u>
LIABILITIES AND NET ASSETS		
Liabilities		
Accounts payable and accrued expenses	\$ 421,265	\$ 162,977
Accrued payroll and benefits	1,884,861	1,693,928
Due to school district	-	35,874
Deferred revenue	69,771	47,393
Obligations under capital leases	125,663	92,872
	<u>125,663</u>	<u>92,872</u>
Total liabilities	<u>2,501,560</u>	<u>2,033,044</u>
Commitments and contingencies		
Net assets		
Without donor restrictions	1,252,572	2,107,058
With donor restrictions	7,832,254	8,321,770
	<u>7,832,254</u>	<u>8,321,770</u>
Total net assets	<u>9,084,826</u>	<u>10,428,828</u>
Total liabilities and net assets	<u>\$ 11,586,386</u>	<u>\$ 12,461,872</u>

The accompanying notes are an integral part of these financial statements.

Icahn Charter School 1

STATEMENTS OF ACTIVITIES

Years ended June 30, 2022 and 2021

	2022			2021		
	Without Donor Restrictions	With Donor Restrictions	Total	Without Donor Restrictions	With Donor Restrictions	Total
Revenues, gains and other support						
Public School District:						
Resident student enrollment	\$ 5,289,010	\$ -	\$ 5,289,010	\$ 5,230,030	\$ -	\$ 5,230,030
Contributed services - students with disabilities	-	-	-	9,602	-	9,602
Grants and contracts:						
State and local	24,800	-	24,800	25,465	-	25,465
Federal - Title and IDEA	238,474	-	238,474	226,775	-	226,775
Federal - Other	599,472	-	599,472	172,405	-	172,405
Other grants	30,701	-	30,701	41,391	-	41,391
Net assets released from restrictions	489,516	(489,516)	-	489,516	(489,516)	-
Total revenues, gains and other support	6,671,973	(489,516)	6,182,457	6,195,184	(489,516)	5,705,668
Expenses						
Program services:						
Regular education	6,160,966	-	6,160,966	4,692,545	-	4,692,545
Special education	217,157	-	217,157	187,844	-	187,844
Total program services	6,378,123	-	6,378,123	4,880,389	-	4,880,389
Supporting services:						
Management and general	1,150,991	-	1,150,991	975,670	-	975,670
Total operating expenses	7,529,114	-	7,529,114	5,856,059	-	5,856,059
(Deficit) surplus from school operations	(857,141)	(489,516)	(1,346,657)	339,125	(489,516)	(150,391)
Other revenue						
Other income	2,655	-	2,655	1,802	-	1,802
CHANGE IN NET ASSETS	(854,486)	(489,516)	(1,344,002)	340,927	(489,516)	(148,589)
Net assets, beginning of year	2,107,058	8,321,770	10,428,828	1,766,131	8,811,286	10,577,417
Net assets, end of year	\$ 1,252,572	\$ 7,832,254	\$ 9,084,826	\$ 2,107,058	\$ 8,321,770	\$ 10,428,828

The accompanying notes are an integral part of these financial statements.

Icahn Charter School 1

STATEMENT OF FUNCTIONAL EXPENSES

Year ended June 30, 2022

	Program services			Management and General	2022 Total
	Regular Education	Special Education	Total		
Personnel service costs					
Administrative staff personnel	\$ 285,468	\$ -	\$ 285,468	\$ 395,721	\$ 681,189
Instructional personnel	3,030,013	101,994	3,132,007	-	3,132,007
Non-instructional personnel	-	-	-	355,190	355,190
Total personnel service costs	3,315,481	101,994	3,417,475	750,911	4,168,386
Fringe benefits and payroll taxes	731,828	8,575	740,403	103,923	844,326
Retirement	26,018	5,100	31,118	25,530	56,648
Legal	3,404	-	3,404	582	3,986
Accounting/audit services	27,830	2,221	30,051	5,140	35,191
Other purchasing/professional consulting service	60,202	-	60,202	1,701	61,903
Building and land rent/lease	39,540	3,156	42,696	7,303	49,999
Repairs and maintenance	220,317	11,177	231,494	39,598	271,092
Insurance	80,824	-	80,824	13,825	94,649
Utilities	101,841	8,072	109,913	18,801	128,714
Supplies/material	213,546	11,491	225,037	-	225,037
Equipment/furnishing	195	-	195	1,841	2,036
Staff development	222,459	-	222,459	-	222,459
Marketing/recruitment	17,231	-	17,231	2,947	20,178
Technology	193,596	2,574	196,170	33,555	229,725
Telephone	15,623	1,247	16,870	2,886	19,756
Student service	228,578	11,725	240,303	-	240,303
Office expense	14,836	644	15,480	33,697	49,177
Depreciation	629,138	48,874	678,012	97,351	775,363
Other	18,479	307	18,786	11,400	30,186
Total expenses	\$ 6,160,966	\$ 217,157	\$ 6,378,123	\$ 1,150,991	\$ 7,529,114

The accompanying notes are an integral part of this financial statement.

Icahn Charter School 1

STATEMENT OF FUNCTIONAL EXPENSES

Year ended June 30, 2021

	Program services			Management and General	2021 Total
	Regular Education	Special Education	Total		
Personnel service costs					
Administrative staff personnel	\$ 274,070	\$ -	\$ 274,070	\$ 300,107	\$ 574,177
Instructional personnel	2,367,575	88,447	2,456,022	-	2,456,022
Non-instructional personnel	-	-	-	322,547	322,547
Total personnel service costs	2,641,645	88,447	2,730,092	622,654	3,352,746
Fringe benefits and payroll taxes	585,979	7,445	593,424	88,986	682,410
Retirement	62,329	4,422	66,751	21,366	88,117
Legal	529	-	529	104	633
Accounting/audit services	26,299	2,363	28,662	5,646	34,308
Other purchasing/professional consulting service	19,514	9,602	29,116	1,680	30,796
Building and land rent/lease	38,329	3,444	41,773	8,228	50,001
Repairs and maintenance	179,315	5,290	184,605	36,362	220,967
Insurance	50,306	-	50,306	9,909	60,215
Utilities	63,055	5,497	68,552	13,503	82,055
Supplies/material	54,812	2,961	57,773	-	57,773
Equipment/furnishing	-	-	-	86	86
Staff development	149,274	-	149,274	-	149,274
Marketing/recruitment	12,602	-	12,602	2,482	15,084
Technology	161,615	2,802	164,417	32,385	196,802
Telephone	19,925	1,790	21,715	4,277	25,992
Student service	13,220	777	13,997	-	13,997
Office expense	17,652	1,434	19,086	14,535	33,621
Depreciation	587,611	51,152	638,763	104,211	742,974
Other	8,534	418	8,952	9,256	18,208
Total expenses	\$ 4,692,545	\$ 187,844	\$ 4,880,389	\$ 975,670	\$ 5,856,059

The accompanying notes are an integral part of this financial statement.

Icahn Charter School 1

STATEMENTS OF CASH FLOWS

For the years ended June 30, 2022 and 2021

	<u>2022</u>	<u>2021</u>
Cash flows from operating activities:		
Cash receipts from:		
Public school district	\$ 5,311,388	\$ 5,230,398
Grants and contracts	892,032	(228,439)
Other	2,657	1,802
Cash payments for:		
Vendors	(1,493,393)	(902,894)
Employee salaries and benefits	<u>(4,878,426)</u>	<u>(3,957,975)</u>
Net cash (used in) provided by operating activities	<u>(165,742)</u>	<u>142,892</u>
Cash flows from investing activities:		
Purchases of furniture, fixtures and equipment	<u>(43,632)</u>	<u>(271,971)</u>
Cash flows from financing activities:		
Capital lease payments	<u>(38,667)</u>	<u>(37,053)</u>
NET DECREASE IN CASH, CASH EQUIVALENTS, AND RESTRICTED CASH	(248,041)	(166,132)
Cash and cash equivalents and Restricted Cash, beginning of year	<u>1,822,443</u>	<u>1,988,575</u>
Cash and cash equivalents and Restricted Cash, end of year	<u><u>\$ 1,574,402</u></u>	<u><u>\$ 1,822,443</u></u>
Reconciliation of change in net assets to net cash (used in) provided by operating activities:		
Change in net assets	\$ (1,344,002)	\$ (148,589)
Adjustments to reconcile change in net assets to net cash (used in) provided by operating activities:		
Depreciation	775,363	742,974
Change in assets and liabilities:		
Grants and contracts receivable	(308,735)	(124,022)
Due from school district	(25,971)	58,673
Prepaid expenses	4,799	44,789
Contributions and other receivables	333,291	(638,727)
Other assets	(36,212)	6,783
Accounts payable and accrued expenses	258,288	(528)
Accrued payroll and benefits	190,933	165,298
Due to school districts	(35,874)	35,874
Deferred revenue	<u>22,378</u>	<u>367</u>
Net cash (used in) provided by operating activities	<u><u>\$ (165,742)</u></u>	<u><u>\$ 142,892</u></u>
Supplemental disclosure of cash flow information:		
Assets acquired under capital leases	\$ 131,563	\$ -

The accompanying notes are an integral part of these financial statements.

Icahn Charter School 1

NOTES TO THE FINANCIAL STATEMENTS

June 30, 2022 and 2021

NOTE A - NATURE OF OPERATIONS

The Icahn Charter School 1 (the "Charter School") is an educational corporation formed to operate a charter school located in the City of New York, County of the Bronx. On March 20, 2001, the Board of Regents of the University of the State of New York, for and on behalf of the State Education Department, granted a provisional charter valid for a term of five years, incorporating the Charter School. The charter was renewed in 2020 for a term up through and including July 31, 2026.

The central mission of the Charter School, using the Core Knowledge curriculum developed by E.D. Hirsch, is to provide students with a rigorous academic program offered in an extended day/year setting. Students are expected to graduate armed with the skills and knowledge to participate successfully in the most rigorous academic environments and have a sense of personal and community responsibility. The Charter School is coeducational and nonsectarian and commenced instruction on September 4, 2001.

The Charter School is exempt from federal income tax under Section 501(a) of the Internal Revenue Code and is classified as an organization described in Section 501(c)(3).

In March of 2020 the World Health Organization officially declared COVID-19, a disease caused by the novel coronavirus, a pandemic. This caused many local and national governments, including New York State, to impose restrictions on business operations, travel and time spent outside the home. The outbreak has adversely impacted the level of economic activity around the world and disrupted normal business activity in every sector of the economy. The full impact of the COVID-19 outbreak continues to evolve as of the date of this report. External factors, including the duration and intensity of the pandemic, the shape of the economic recovery across the globe, as well as timing and widespread adoption of vaccines, will all have an impact on the School's operating results. Due to the many uncertainties associated with the pandemic, management is unable to determine the full magnitude it may have on the School's financial condition, liquidity and future results, or the implications on instruction and the student experience.

NOTE B - SUMMARY OF SIGNIFICANT ACCOUNTING POLICIES

Basis of Presentation

The Charter School's policy is to prepare its financial statements in conformity with accounting principles generally accepted in the United States of America ("US GAAP") using the accrual basis of accounting. Consequently, certain revenue and related assets are recognized when pledged or earned and certain expenses are recognized when the obligation is incurred.

Net Asset Classification

The Charter School reports information regarding their financial position and changes in net assets according to the existence or absence of donor-imposed restrictions, as follows:

Net Assets without Donor Restriction

Represent net assets which are not restricted by donors. Net assets without donor restrictions are net assets of the Charter School that are fully available, at the discretion of the Board of Directors and management, for the Charter School to utilize in any of its programs or supporting services.

Icahn Charter School 1

NOTES TO THE FINANCIAL STATEMENTS - CONTINUED

June 30, 2022 and 2021

Net Assets with Donor Restriction

Represent net assets which are subject to donor-imposed restrictions whose use is restricted by time and/or purpose. The Charter School's net assets with donor restrictions are all subject to donor-imposed restrictions that require the Charter School to use or expend the gifts as specified, based on purpose or passage of time.

Net assets with donor restrictions may also include amounts with donor stipulations that the corpus of the gifts be maintained in perpetuity, but allows for the expenditure of net investment income and gains earned on the corpus for either specified or unspecified purposes. The Charter School did not have any such amounts as of June 30, 2022 or 2021.

Revenue

Revenue is recorded on the accrual basis of accounting. The Charter School derives its revenue primarily from state and local capitation from the public school districts based on student enrollment, contributions and grants.

Revenues are reported as increases in net assets without donor restrictions unless use of the related assets is limited by explicit donor-imposed restrictions. Public school district revenues (state and local capitation) received from the New York City Department of Education Office of Charter Schools are recognized over the period earned. Revenue from grants and contracts is recognized as the related expenses are incurred, or services performed, in accordance with the terms of the respective grant or contract agreement. Amounts received in advance are reported as deferred revenue.

The Charter School records contributions of cash and other assets when an unconditional promise to give such assets is received from a donor. Contributions are recorded at the fair market value of the assets received and are classified as either with or without donor restrictions depending on whether the donor has imposed a restriction on the use of such assets.

The Charter School reports gifts of cash or other assets within net assets with donor restrictions if they are received with donor stipulations that limit the use of the donated assets. Contributions not expected to be received within one year are recognized as support with donor restrictions and are discounted using a credit adjusted discount rate assigned in the year the pledge originates. When a donor restriction expires, that is, when a stipulated time restriction ends or purpose restriction is accomplished, net assets with donor restrictions are reclassified to net assets without donor restrictions and reported in the statement of activities as net assets released from restrictions. Donor-restricted contributions whose restrictions are met in the same fiscal year are reported as revenues without donor restrictions.

The Charter School follows guidance requiring evaluation of whether a transfer of assets is: (1) an exchange transaction in which a resource provider is receiving commensurate value in return for the resources transferred; or (2) a contribution. If the transfer of assets is determined to be a contribution, the Charter School evaluates whether the contribution is conditional based upon whether the agreement includes both (1) one or more barriers that must be overcome before the Charter School is entitled to the assets transferred and promised and (2) a right of return of assets transferred or a right of release of a promisor's obligation to transfer assets.

Receivables

Receivables contain some level of uncertainty surrounding timing and amount of collection. As such, the carrying value of the related receivables is reduced by an appropriate allowance for uncollectible accounts. The Charter School determines its allowance by considering a number of factors, including the length of time receivables are past due, the Charter School's previous loss history, the donor's current ability to pay

Icahn Charter School 1

NOTES TO THE FINANCIAL STATEMENTS - CONTINUED

June 30, 2022 and 2021

its obligation, and the condition of the general economy and the industry as a whole. Receivables outstanding longer than the payment terms are considered past due. As of June 30, 2022 and 2021, there was no allowance for uncollectible receivables. Grants and contracts receivables and contributions and other receivables as of June 30, 2022 and 2021 are expected to be collected within one year.

The Charter School writes off receivables when they are deemed to be uncollectible, and payments subsequently received on such receivables are recorded as income in the period received.

Cash and Cash Equivalents and Restricted Cash

Cash and cash equivalents are recorded at fair value, and are comprised of highly liquid financial instruments with original maturities of three months or less at the time of purchase. Included in cash and cash equivalents at June 30, 2022 and 2021 is a reserve fund of \$85,000 and \$79,000, respectively, for the maintenance of the building. Furthermore, a reserve fund of \$75,000 to cover debts in the event of the Charter School's dissolution is included as restricted cash within the statement of financial position.

Concentration of Credit Risk

Certain financial instruments potentially subject the Charter School to concentration of credit risk. These financial instruments consist primarily of cash and cash equivalents. The Charter School maintains its cash in various bank accounts, which may exceed federally insured limits at times. The Charter School has not experienced, nor does it anticipate, any losses with respect to these bank accounts.

Capital Assets

Furniture, fixtures, equipment, library, software, and textbooks are stated at cost net of depreciation, or fair value at date of contribution, if donated. The Charter School capitalizes all property and equipment with a cost of at least \$1,000 and an estimated useful life of more than one year. Depreciation of furniture, fixtures, equipment, library, software and textbooks is computed in the month in which the assets are acquired, utilizing the straight-line basis, over their estimated useful lives, as follows:

	<u>Useful lives</u>
Furniture and fixtures	3 years
Renovations and improvements	10-20 years
Building	30 years
Equipment	3-5 years
Library, software and textbooks	3 years

Classification of Expenses

Expenses attributable to more than one program or supporting service are allocated based on relevant drivers such as the full-time student equivalent calculations utilized by the School.

Taxes

The Charter School follows guidance that clarifies the accounting for uncertainty in tax positions taken or expected to be taken in a tax return, including issues relating to financial statement recognition and measurement. This guidance provides that the tax effects from an uncertain tax position can only be recognized in the financial statements if the position is "more-likely-than-not" to be sustained if the position were to be challenged by a taxing authority. The assessment of the tax position is based solely on the technical merits of the position, without regard to the likelihood that the tax position may be challenged.

Icahn Charter School 1

NOTES TO THE FINANCIAL STATEMENTS - CONTINUED

June 30, 2022 and 2021

The Charter School is exempt from federal income tax under IRC section 501(c)(3), though it is subject to tax on income unrelated to its exempt purpose, unless that income is otherwise excluded by the Code. The Charter School has processes presently in place to ensure the maintenance of its tax-exempt status; to identify and report unrelated business income; to determine its filing and tax obligations in jurisdictions for which it was nexus; and to identify and evaluate other matters that may be considered tax positions. The Charter School has determined that there are no material uncertain tax positions that require recognition or disclosure in the financial statements. In addition, the Charter School has not recorded a provision for income taxes as it has no material tax liability from unrelated business income activities.

Use of Estimates

The preparation of financial statements in conformity with U.S. GAAP requires management to make estimates and assumptions that affect the reported amounts of assets and liabilities, disclosure of contingent assets and liabilities at the date of the financial statements, and the reported amounts of revenues and expenses during the reporting period. Actual results could differ from those estimates.

New Accounting Pronouncements

In September 2020, the FASB issued ASU 2020-07, *Not-for-Profit Entities (Topic 958): Presentation and Disclosures by Not-for-Profit Entities for Contributed Nonfinancial Assets*. ASU 2020-07 clarifies the presentation and disclosure of contributed nonfinancial assets with an intention to provide the reader of the financial statements a clearer understanding of what type of nonfinancial assets were received and how they are used and recognized. The provisions of ASU 2020-07 are effective for annual reporting periods beginning after June 15, 2021, and retrospective application is required. The adoption of ASU 2020-07 as of and for the year ended June 30, 2022 did not have a material impact on the Charter School's financial statements.

NOTE C - CAPITAL ASSETS, NET

At June 30, 2022 and 2021, capital assets consisted of the following:

	2022	2021
Library, software and textbooks	\$ 287,067	\$ 287,067
Renovations and improvements	1,136,572	1,136,572
Building	14,685,478	14,685,478
Equipment	1,572,893	1,665,512
Furniture and fixtures	365,548	343,980
	18,047,559	18,118,609
Less: Accumulated depreciation	(9,217,308)	(8,628,085)
	<u>\$ 8,830,251</u>	<u>\$ 9,490,524</u>

Included in equipment as of June 30, 2022 and 2021 are assets acquired under capital leases at a cost of approximately \$131,000 and \$246,000 with accumulated depreciation of approximately \$7,000 and \$158,000, respectively.

Depreciation expense totaled approximately \$775,000 and \$743,000 for the years ended June 30, 2022 and 2021, respectively.

Icahn Charter School 1

NOTES TO THE FINANCIAL STATEMENTS - CONTINUED

June 30, 2022 and 2021

NOTE D - RELATED PARTY TRANSACTIONS

Administrative Support

Legal services are provided by the Inwood Opportunity LLC (the "Company"), a foundation for which Carl C. Icahn serves as a trustee, at no cost to the Charter School. These amounts have not been reflected as in-kind contributions in the accompanying financial statements, as neither the Charter School nor the Company has a readily measurable or objective basis for determining such amounts.

Facilities

During 2001, the Foundation for a Greater Opportunity (the "Foundation") (an affiliated entity) entered into a 99 year ground lease for land located at 1525 Brook Avenue, Bronx, New York with the Children's Rescue Fund (the "Fund"). Subsequent to entering into the ground lease, the Foundation constructed a building on this land and has an operating lease with the Charter School for its use which commenced in September 2001. The original lease expired on September 1, 2011. The lease was renewed through August 31, 2026 and provides for rental payments of \$50,000 for each year of occupancy. Total rent expense for the years ended June 30, 2022 and 2021 was approximately \$50,000.

During 2006, the Foundation entered into another 99 year ground lease for land located at 1520 Brook Avenue, Bronx, New York with the Fund. Subsequent to entering into the ground lease, the Foundation subleased the land to the New York City School Construction Authority ("SCA") in connection with the construction of a charter public middle school. On October 24, 2006, the Foundation then entered into an agreement with the SCA to construct a charter public middle school on the subleased land. Upon completion of construction and issuance of the certificate of occupancy, title to the middle school building was transferred to the New York City Department of Education and leased back to the Foundation. Although the lease is between the Foundation and the SCA, the lease agreement designates the Charter School as the initial user of the premises. The lease has a 30-year term and the Foundation is obligated to pay rent of \$1 per year. In accordance with the lease agreement, the Foundation concurrently entered into a use agreement with the Charter School for the use of the leased land and building for a corresponding 30-year term.

The Foundation accounted for this arrangement as an agency transaction on behalf of the Charter School as the Charter School is the ultimate beneficiary of the imputed fair value of the 30 year lease agreement. During the year ended June 30, 2009, upon receiving the building to use, the Charter School has recorded the imputed fair value of the building of approximately \$14,700,000, within capital assets and recognized contributions revenue with donor restrictions which will be amortized over the 30-year term and released from the restrictions accordingly.

Other

Certain expenses are shared amongst the seven Icahn Charter Schools (affiliated entities) and amounts may also be received on behalf of another Icahn Charter School. Shared expenses primarily related to prorated salaries, based on student enrollment, for administrators at the Charter School who serve in a management capacity at other Icahn Charter Schools. At June 30, 2022 and 2021, accounts payable and accrued expenses included approximately \$35,000 and \$39,000, respectively, and other receivables included approximately \$433,000 and \$766,000, respectively, pertaining to these related party transactions.

Icahn Charter School 1

NOTES TO THE FINANCIAL STATEMENTS - CONTINUED

June 30, 2022 and 2021

NOTE E - NET ASSETS WITH DONOR RESTRICTIONS

At June 30, 2022 and 2021, net assets with donor restrictions consisted of the following:

	<u>2022</u>	<u>2021</u>
Restricted as to purpose:		
Middle School	<u>\$ 7,832,254</u>	<u>\$ 8,321,770</u>

During the years ended June 30, 2022 and 2021, net assets were released from donor restrictions by incurring expenses satisfying the purpose, or by meeting the time restrictions as follows:

	<u>2022</u>	<u>2021</u>
Middle School	<u>\$ 489,516</u>	<u>\$ 489,516</u>

NOTE F - CONTRIBUTED SERVICES

The Charter School utilizes certain transportation and food services provided by the New York City public school system at no cost. The Charter School is unable to determine the fair value for these services, and as such, this is not reflected on the accompanying financial statements.

NOTE G - CONCENTRATION OF REVENUES

The Charter School receives a majority of its revenues from the New York State Education Department through the New York City Department of Education Office of Charter Schools. The New York City Department of Education provides general operating support to the Charter School based upon the location and the number of students enrolled. Operating support provided to the Charter School by the New York City Department of Education totaled approximately \$5,289,000 and \$5,240,000 for the years ended June 30, 2022 and 2021, respectively. The Charter School is dependent upon this level of funding in order to continue its operations.

NOTE H - OBLIGATION UNDER CAPITAL LEASES

Certain long-term leases covering equipment are classified as capital leases. Accordingly, equipment is capitalized as leased property and amortized on a straight-line basis over the term of the lease. The corresponding obligation under the capital leases represents the present value of the rental payments discounted by interest rates implicit in the lease agreements.

Icahn Charter School 1

NOTES TO THE FINANCIAL STATEMENTS - CONTINUED

June 30, 2022 and 2021

Annual payments due subsequent to June 30, 2022 follow:

<u>Years Ending June 30,</u>	
2023	\$ 29,433
2024	29,433
2025	29,433
2026	29,433
2027	<u>22,074</u>
Total	139,806
Less: interest	<u>14,143</u>
	<u>\$ 125,663</u>

NOTE I - PENSION PLAN

The Charter School has a defined contribution plan (the "Plan"), administered by T-Rowe Price, for all full-time personnel. Contributions by the Charter School to the Plan totaled approximately \$57,000 and \$88,000 for the years ended June 30, 2022 and 2021, respectively.

NOTE J - COMMITMENTS AND CONTINGENCIES

Government Agency Audits

The Charter School participates in a number of federal and state programs. These programs require that the Charter School comply with certain requirements of laws, regulations, contracts, and agreements applicable to the programs in which it participates. All funds expended in connection with government grants and contracts are subject to audit by government agencies. While the ultimate liability, if any, from such audits of government contracts by government agencies is presently not determinable, it should not, in the opinion of management, have a material effect on the Charter School's financial position or change in net assets. Accordingly, no provision for any such liability that may result has been made in the accompanying financial statements.

Litigation

The Charter School may be involved in various legal actions from time to time arising in the normal course of business. In the opinion of management, there are no matters outstanding that would have a material adverse effect on the financial statements of the Charter School.

NOTE K - LIQUIDITY

The school regularly monitors liquidity to meet its operating expenses and other contractual commitments. Strong emphasis on budget and treasury management is undertaken in an effort to anticipate organizational needs during both the short-term and long-term. For the purpose of analyzing resources available to meet general expenditures over a 12-month period, the school considers all expenditures related to its ongoing activities of teaching its public school students to be general operating expenditures.

Icahn Charter School 1

NOTES TO THE FINANCIAL STATEMENTS - CONTINUED

June 30, 2022 and 2021

The following financial assets could be readily made available within one year of the statement of financial position date to meet general operating expenditures as of June 30:

	<u>2022</u>	<u>2021</u>
Cash and cash equivalents	\$ 1,499,402	\$ 1,747,443
Grants and contracts receivable	613,669	304,934
Due from school districts	83,155	57,184
Contributions and other receivables	<u>433,126</u>	<u>766,417</u>
Total financial assets available within one year	<u>\$ 2,629,352</u>	<u>\$ 2,875,978</u>

The school maintained a net assets with donor restrictions balance of approximately \$7,832,000 and \$8,322,000 as of June 30, 2022 and 2021, respectively. The amounts that are restricted are not excluded from the above calculation of available assets to meet general operating expenses as the entire restricted amounts relate to the use of a building for stipulated purposes, and the satisfaction of such restriction is not dependent on the future outlay of financial assets.

NOTE L - SUBSEQUENT EVENTS

The Charter School evaluated its June 30, 2022 financial statements for subsequent events through November 1, 2022, the date the financial statements were available to be issued. The Charter School is not aware of any subsequent events which would require recognition or disclosure in the accompanying financial statements.

SUPPLEMENTARY INFORMATION

GRANT THORNTON LLP

186 Wood Ave. S.
4th Floor
Iselin, NJ 08830

D +1 732 516 5500

F +1 732 516 5502

REPORT OF INDEPENDENT CERTIFIED PUBLIC ACCOUNTANTS ON INTERNAL CONTROL OVER FINANCIAL REPORTING AND ON COMPLIANCE AND OTHER MATTERS REQUIRED BY *GOVERNMENT AUDITING STANDARDS*

To the Board of Directors of:
Icahn Charter School 1

We have audited, in accordance with auditing standards generally accepted in the United States of America and the standards applicable to financial audits contained in *Government Auditing Standards* issued by the Comptroller General of the United States (*Government Auditing Standards*), the financial statements of Icahn Charter School 1 (the "Charter School"), which comprise the statement of financial position as of June 30, 2022, and the related statements of activities, functional expenses, and cash flows for the year then ended, and the related notes to the financial statements, and have issued our report thereon dated November 1, 2022.

Report on internal control over financial reporting

In planning and performing our audit of the financial statements, we considered the Charter School's internal control over financial reporting ("internal control") as a basis for designing audit procedures that are appropriate in the circumstances for the purpose of expressing our opinion on the financial statements, but not for the purpose of expressing an opinion on the effectiveness of the Charter School's internal control. Accordingly, we do not express an opinion on the effectiveness of the Charter School's internal control.

A deficiency in internal control exists when the design or operation of a control does not allow management or employees, in the normal course of performing their assigned functions, to prevent, or detect and correct, misstatements on a timely basis. A material weakness is a deficiency, or a combination of deficiencies, in internal control, such that there is a reasonable possibility that a material misstatement of the Charter School's financial statements will not be prevented, or detected and corrected, on a timely basis. A significant deficiency is a deficiency, or a combination of deficiencies, in internal control that is less severe than a material weakness, yet important enough to merit attention by those charged with governance.

Our consideration of internal control was for the limited purpose described in the first paragraph of this section and was not designed to identify all deficiencies in internal control that might be material weaknesses or significant deficiencies. Given these limitations, during our audit we did not identify any deficiencies in internal control that we consider to be material weaknesses. However, material weaknesses or significant deficiencies may exist that were not identified.

Report on compliance and other matters

As part of obtaining reasonable assurance about whether the Charter School's financial statements are free from material misstatement, we performed tests of its compliance with certain provisions of laws, regulations, contracts, and grant agreements, noncompliance with which could have a direct and material effect on the financial statements. However, providing an opinion on compliance with those provisions was not an objective of our audit, and accordingly, we do not express such an opinion. The results of our tests disclosed no instances of noncompliance or other matters that are required to be reported under *Government Auditing Standards*.

Purpose of this report

The purpose of this report is solely to describe the scope of our testing of internal control and compliance and the results of that testing, and not to provide an opinion on the effectiveness of the Charter School's internal control or on compliance. This report is an integral part of an audit performed in accordance with *Government Auditing Standards* in considering the Charter School's internal control and compliance. Accordingly, this report is not suitable for any other purpose.

Grant Thornton LLP

Iselin, New Jersey
November 1, 2022

**Disclosure of Financial Interest by a Current
or Former Trustee**

Trustee Name:

Dr Diane Fellows

Name of Charter School Education Corporation:

Icahn Charter Schools

1. List all positions held on the education corporation Board of Trustees ("Board") (e.g., chair, vice-chair, treasurer, secretary, parent representative, etc.).

Trustee of the Board

2. Are you related, by blood or marriage, to any person employed by the school and/or education corporation?

Yes No

If **Yes**, please describe the nature of your relationship and the person's position, job description, and other responsibilities with the school.

3. Are you related by blood, or marriage, or legal adoption/guardianship to any student currently enrolled in a school operated by the education corporation?

Yes No

If **Yes**, please describe the nature of your relationship and if the student could benefit from your participation.

4. Are you related, by blood or marriage, to any person that could otherwise benefit from your participation as a board member of the education corporation?

Yes No

If **Yes**, please describe the nature of your relationship and if this person could benefit from your participation.

5. Are you a past, current, or prospective employee of the charter school, education corporation, and/or an entity that provides comprehensive management services ("CMO"), whether for-profit or not-for-profit, which contracts, or may contract, with the charter school or education corporation; or do you serve as an employee, officer, or director of, or own a controlling interest in, a business or entity that contracts, or does business with, or plans to contract or do business with, the charter school, education corporation, and/or a CMO, whether for-profit or not-for-profit, including, but not limited to, the lease of real or personal property to the said entities?

Yes No

If **Yes**, please provide a description of the position(s) you hold, your responsibilities, your salary and your start date.

6. Identify each interest/transaction (and provide the requested information) that you, any of your immediate family members, and/or any persons who you reside with have held or engaged in with the charter school(s) operated by the education corporation during the time you have served on the Board, and in the six months prior to such service. If there has been no such interest or transaction, check **None**.

None

Date(s)	Nature of financial interest / transaction	Steps taken to avoid a conflict of interest, (e.g., did not vote, did not participate in discussion)	Name of person holding interest or engaging in transaction and relationship to you

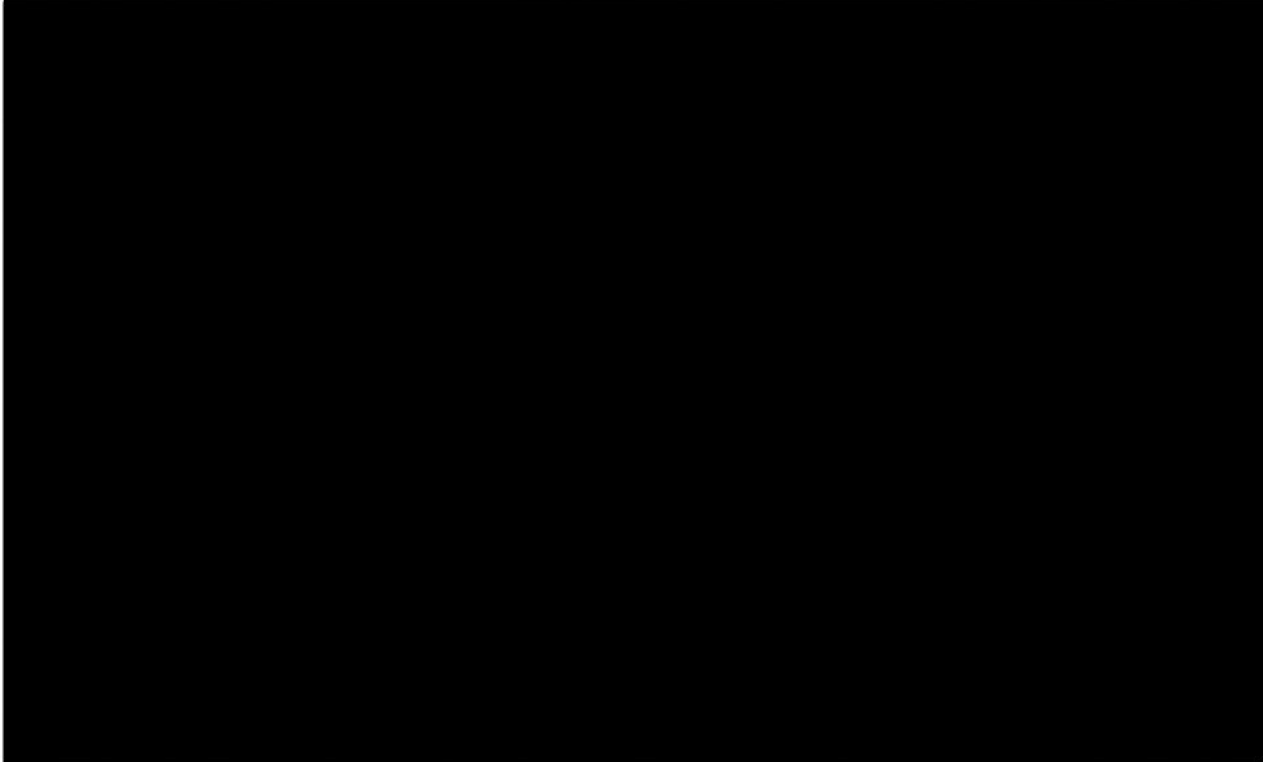
7. Identify each individual, business, corporation, union association, firm, partnership, franchise holding company, joint-stock company, business or real estate trust, non-profit organization, or other organization or group of people doing business with the school(s) operated by the education corporation **and** in which such entity, during the time of your tenure as a trustee, you and/or your immediate family member(s) or person(s) you reside with had a financial interest or other relationship. If you are a member, director, officer, or employee of an organization formally partnered with and/or doing business with the school(s) through a management or services agreement, please identify only the name of the organization, your position in the organization, and the relationship between such organization and the school(s). If there was no financial interest, check **None**.

None

Organization conducting business with the school(s)	Nature of business conducted	Approximate value of the business conducted	Name of Trustee and/or immediate family member of household holding an interest in the organization conducting business with the school(s) and the nature of the interest	Steps taken to avoid conflict of interest

-

This document is considered a public record and, as such, may be made available to members of the public upon request under the Freedom of Information Law. The personal contact information provided below will be redacted.



Alicia J. [unclear]

June 6, 2022

Signature

Date

Acceptable signature formats include:

- Digitally certified PDF signature
- Print form, manually sign, scan to PDF

last revised 04/2022

**Disclosure of Financial Interest by a Current or
Former Trustee**

Trustee Name:

EDWARD J.SHANAHAN

Name of Charter School Education Corporation:

Icahn Charter School 1, 2, 3, 4, 5, 6 and 7

1. 1. List all positions held on the education corporation Board of Trustees ("Board") (e.g., chair, vice-chair, treasurer, secretary, parent representative, etc.).

Board member

1. 2. Are you related, by blood or marriage, to any person employed by the school and/or education corporation?

No

If **Yes**, please describe the nature of your relationship and the person's position, job description, and other responsibilities with the school.

1. 3. Are you related by blood, or marriage, or legal adoption/guardianship to any student currently enrolled in a school operated by the education corporation?

No

If **Yes**, please describe the nature of your relationship and if the student could benefit from your participation.

1. 4. Are you related, by blood or marriage, to any person that could otherwise benefit from your participation as a board member of the education corporation?

No

If **Yes**, please describe the nature of your relationship and if this person could benefit

from your participation.

1. 5. Are you a past, current, or prospective employee of the charter school, education corporation, and/or an entity that provides comprehensive management services ("CMO"), whether for-profit or not-for-profit, which contracts, or may contract, with the charter school or education corporation; or do you serve as an employee, officer, or director of, or own a controlling interest in, a business or entity that contracts, or does business with, or plans to contract or do business with, the charter school, education corporation, and/or a CMO, whether for-profit or not-for-profit, including, but not limited to, the lease of real or personal property to the said entities?

No

If **Yes**, please provide a description of the position(s) you hold, your responsibilities, your salary and your start date.

1. 6. Identify each interest/transaction (and provide the requested information) that you, any of your immediate family members, and/or any persons who you reside with have held or engaged in with the charter school(s) operated by the education corporation during the time you have served on the Board, and in the six months prior to such service. If there has been no such interest or transaction, check **None**.

X None

Date(s)	Nature of financial interest/transaction	Steps taken to avoid a conflict of interest, (e.g., did not vote, did not participate in discussion)	Name of person holding interest or engaging in transaction and relationship to you

1. 7. Identify each individual, business, corporation, union association, firm, partnership, franchise holding company, joint-stock company, business or real estate trust, non-profit organization, or other organization or group of people doing business with the school(s) operated by the education corporation **and** in which such entity, during

the time of your tenure as a trustee, you and/or your immediate family member(s) or person(s) you reside with had a financial interest or other relationship. If you are a member, director, officer, or employee of an organization formally partnered with and/or doing business with the school(s) through a management or services agreement, please identify only the name of the organization, your position in the organization, and the relationship between such organization and the school(s). If there was no financial interest, check **None**.

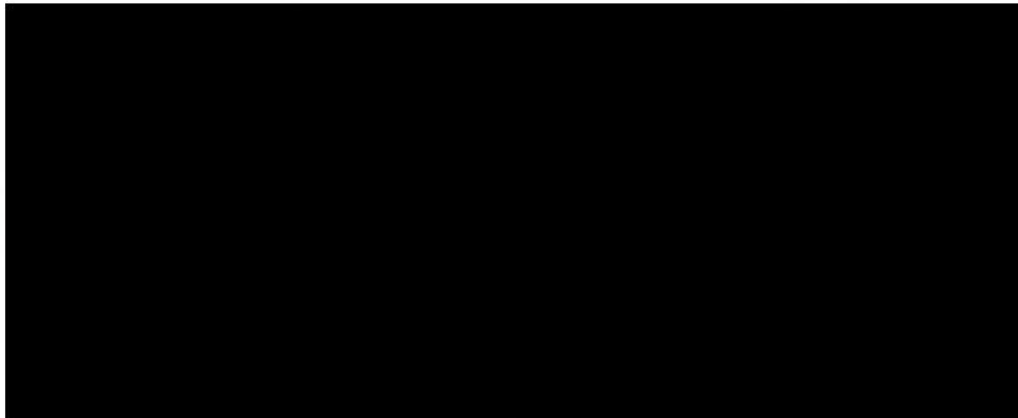
X None

Organization conducting business with the school(s)	Nature of business conducted	Approximate value of the business conducted	Name of Trustee and/or immediate family member of household holding an interest in the organization conducting business with the school(s) and the nature of the interest	Steps taken to avoid conflict of interest

This document is considered a public record and, as such, may be made available to members of the public upon request under the Freedom of Information Law. The personal contact information provided below will be redacted.

Business Telephone:

Business Address:



Edward J. Sheel

Signature

Acceptable signature formats include:

- • Digitally certified PDF signature
- • Print form, manually sign, scan to PDF

Date July 26, 2022

last revised 04/2022

**Disclosure of Financial Interest by a Current
or Former Trustee**

Trustee Name:

Paul Gaeder Scarn

Name of Charter School Education Corporation:

Carl E Scarn Charter Schools 1-7

1. List all positions held on the education corporation Board of Trustees ("Board") (e.g., chair, vice-chair, treasurer, secretary, parent representative, etc.).

Chair

2. Are you related, by blood or marriage, to any person employed by the school and/or education corporation?

Yes No

If **Yes**, please describe the nature of your relationship and the person's position, job description, and other responsibilities with the school.

3. Are you related by blood, or marriage, or legal adoption/guardianship to any student currently enrolled in a school operated by the education corporation?

Yes No

If **Yes**, please describe the nature of your relationship and if the student could benefit from your participation.

4. Are you related, by blood or marriage, to any person that could otherwise benefit from your participation as a board member of the education corporation?

Yes No

If **Yes**, please describe the nature of your relationship and if this person could benefit from your participation.

5. Are you a past, current, or prospective employee of the charter school, education corporation, and/or an entity that provides comprehensive management services ("CMO"), whether for-profit or not-for-profit, which contracts, or may contract, with the charter school or education corporation; or do you serve as an employee, officer, or director of, or own a controlling interest in, a business or entity that contracts, or does business with, or plans to contract or do business with, the charter school, education corporation, and/or a CMO, whether for-profit or not-for-profit, including, but not limited to, the lease of real or personal property to the said entities?

Yes No

If **Yes**, please provide a description of the position(s) you hold, your responsibilities, your salary and your start date.

6. Identify each interest/transaction (and provide the requested information) that you, any of your immediate family members, and/or any persons who you reside with have held or engaged in with the charter school(s) operated by the education corporation during the time you have served on the Board, and in the six months prior to such service. If there has been no such interest or transaction, check **None**.

None

Date(s)	Nature of financial interest / transaction	Steps taken to avoid a conflict of interest, (e.g., did not vote, did not participate in discussion)	Name of person holding interest or engaging in transaction and relationship to you

7. Identify each individual, business, corporation, union association, firm, partnership, franchise holding company, joint-stock company, business or real estate trust, non-profit organization, or other organization or group of people doing business with the school(s) operated by the education corporation and in which such entity, during the time of your tenure as a trustee, you and/or your immediate family member(s) or person(s) you reside with had a financial interest or other relationship. If you are a member, director, officer, or employee of an organization formally partnered with and/or doing business with the school(s) through a management or services agreement, please identify only the name of the organization, your position in the organization, and the relationship between such organization and the school(s). If there was no financial interest, check **None**.

None

Organization conducting business with the school(s)	Nature of business conducted	Approximate value of the business conducted	Name of Trustee and/or immediate family member of household holding an interest in the organization conducting business with the school(s) and the nature of the interest	Steps taken to avoid conflict of interest

This document is considered a public record and, as such, may be made available to members of the public upon request under the Freedom of Information Law. The personal contact information provided below will be redacted.



Paul Baeder 6/4/22
Signature Date

Acceptable signature formats include:

- Digitally certified PDF signature
- Print form, manually sign, scan to PDF

last revised 04/2022

**Disclosure of Financial Interest by a Current
or Former Trustee**

Trustee Name:

Karen Mandelbaum

Name of Charter School Education Corporation:

Isahn Charter School 1234567

1. List all positions held on the education corporation Board of Trustees ("Board") (e.g., chair, vice-chair, treasurer, secretary, parent representative, etc.).

Financial Committee & Grievance Committees

2. Are you related, by blood or marriage, to any person employed by the school and/or education corporation?

Yes No

If Yes, please describe the nature of your relationship and the person's position, job description, and other responsibilities with the school.

3. Are you related by blood, or marriage, or legal adoption/guardianship to any student currently enrolled in a school operated by the education corporation?

Yes No

If Yes, please describe the nature of your relationship and if the student could benefit from your participation.

4. Are you related, by blood or marriage, to any person that could otherwise benefit from your participation as a board member of the education corporation?

Yes No

If **Yes**, please describe the nature of your relationship and if this person could benefit from your participation.

5. Are you a past, current, or prospective employee of the charter school, education corporation, and/or an entity that provides comprehensive management services ("CMO"), whether for-profit or not-for-profit, which contracts, or may contract, with the charter school or education corporation; or do you serve as an employee, officer, or director of, or own a controlling interest in, a business or entity that contracts, or does business with, or plans to contract or do business with, the charter school, education corporation, and/or a CMO, whether for-profit or not-for-profit, including, but not limited to, the lease of real or personal property to the said entities?

Yes No

If **Yes**, please provide a description of the position(s) you hold, your responsibilities, your salary and your start date.

6. Identify each interest/transaction (and provide the requested information) that you, any of your immediate family members, and/or any persons who you reside with have held or engaged in with the charter school(s) operated by the education corporation during the time you have served on the Board, and in the six months prior to such service. If there has been no such interest or transaction, check **None**.

None

Date(s)	Nature of financial interest / transaction	Steps taken to avoid a conflict of interest, (e.g., did not vote, did not participate in discussion)	Name of person holding interest or engaging in transaction and relationship to you

7. Identify each individual, business, corporation, union association, firm, partnership, franchise holding company, joint-stock company, business or real estate trust, non-profit organization, or other organization or group of people doing business with the school(s) operated by the education corporation **and** in which such entity, during the time of your tenure as a trustee, you and/or your immediate family member(s) or person(s) you reside with had a financial interest or other relationship. If you are a member, director, officer, or employee of an organization formally partnered with and/or doing business with the school(s) through a management or services agreement, please identify only the name of the organization, your position in the organization, and the relationship between such organization and the school(s). If there was no financial interest, check **None**.

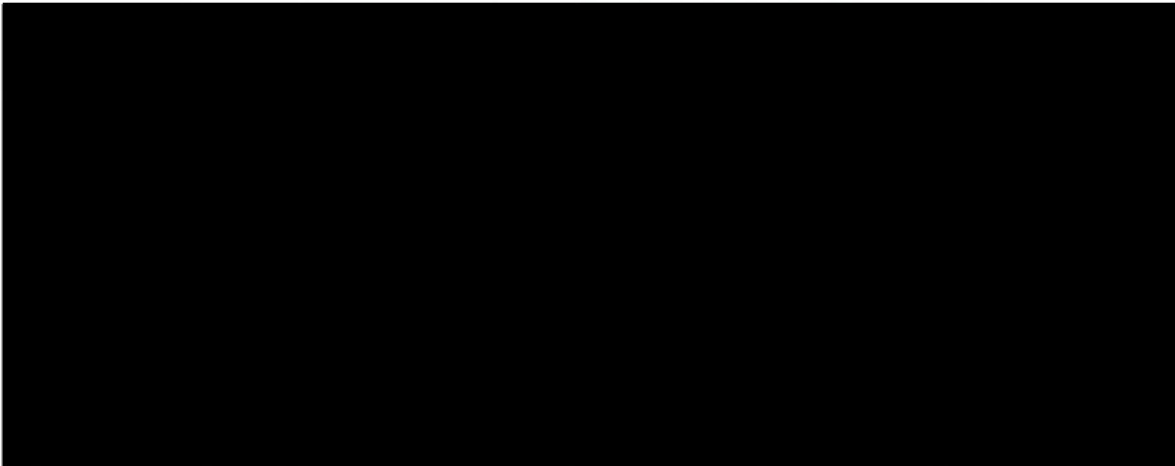
None

Organization conducting business with the school(s)	Nature of business conducted	Approximate value of the business conducted	Name of Trustee and/or immediate family member of household holding an interest in the organization conducting business with the school(s) and the nature of the interest	Steps taken to avoid conflict of interest

This document is considered a public record and, as such, may be made available to members of the public upon request under the Freedom of Information Law. The personal contact information provided below will be redacted.

Business Telephone:

Business Address:



Helen Mandelbaum _____ *6/6/2022*
Signature **Date**

- Acceptable signature formats include:
- Digitally certified PDF signature
 - Print form, manually sign, scan to PDF

last revised 04/2022

**Disclosure of Financial Interest by a Current
or Former Trustee**

Trustee Name:

Robert Sancho

Name of Charter School Education Corporation:

Icahn Charter School 1, 2, 3, 4, 5, 6, and 7

1. List all positions held on the education corporation Board of Trustees ("Board") (e.g., chair, vice-chair, treasurer, secretary, parent representative, etc.).

Trustee

2. Are you related, by blood or marriage, to any person employed by the school and/or education corporation?

Yes No

If **Yes**, please describe the nature of your relationship and the person's position, job description, and other responsibilities with the school.

3. Are you related by blood, or marriage, or legal adoption/guardianship to any student currently enrolled in a school operated by the education corporation?

Yes No

If **Yes**, please describe the nature of your relationship and if the student could benefit from your participation.

4. Are you related, by blood or marriage, to any person that could otherwise benefit from your participation as a board member of the education corporation?

Yes No

If **Yes**, please describe the nature of your relationship and if this person could benefit from your participation.

5. Are you a past, current, or prospective employee of the charter school, education corporation, and/or an entity that provides comprehensive management services ("CMO"), whether for-profit or not-for-profit, which contracts, or may contract, with the charter school or education corporation; or do you serve as an employee, officer, or director of, or own a controlling interest in, a business or entity that contracts, or does business with, or plans to contract or do business with, the charter school, education corporation, and/or a CMO, whether for-profit or not-for-profit, including, but not limited to, the lease of real or personal property to the said entities?

Yes No

If **Yes**, please provide a description of the position(s) you hold, your responsibilities, your salary and your start date.

6. Identify each interest/transaction (and provide the requested information) that you, any of your immediate family members, and/or any persons who you reside with have held or engaged in with the charter school(s) operated by the education corporation during the time you have served on the Board, and in the six months prior to such service. If there has been no such interest or transaction, check **None**.

None

Date(s)	Nature of financial interest / transaction	Steps taken to avoid a conflict of interest, (e.g., did not vote, did not participate in discussion)	Name of person holding interest or engaging in transaction and relationship to you

7. Identify each individual, business, corporation, union association, firm, partnership, franchise holding company, joint-stock company, business or real estate trust, non-profit organization, or other organization or group of people doing business with the school(s) operated by the education corporation and in which such entity, during the time of your tenure as a trustee, you and/or your immediate family member(s) or person(s) you reside with had a financial interest or other relationship. If you are a member, director, officer, or employee of an organization formally partnered with and/or doing business with the school(s) through a management or services agreement, please identify only the name of the organization, your position in the organization, and the relationship between such organization and the school(s). If there was no financial interest, check **None**.

None

Organization conducting business with the school(s)	Nature of business conducted	Approximate value of the business conducted	Name of Trustee and/or immediate family member of household holding an interest in the organization conducting business with the school(s) and the nature of the interest	Steps taken to avoid conflict of interest

This document is considered a public record and, as such, may be made available to members of the public upon request under the Freedom of Information Law. The personal contact information provided below will be redacted.

Business Telephone:

Business Address:



A handwritten signature in black ink, appearing to be "Robert S. ...".

1/6/22

Signature

Date

Acceptable signature formats include:

- Digitally certified PDF signature
- Print form, manually sign, scan to PDF

last revised 04/2022



DEPARTMENT OF BUILDINGS

CERTIFICATE OF OCCUPANCY

BOROUGH Bronx

DATE:

NO. 200661514 E

ZONING DISTRICT R7-1

This certificate supersedes C.O. No

THIS CERTIFIES that the new ~~alter~~ ~~existing~~

buildings ~~promises~~ located at

408 Claremont Parkway, BRONX, N.Y.

Block 2896 Lot 88

CONFORMS SUBSTANTIALLY TO THE APPROVED PLANS AND SPECIFICATIONS AND TO THE REQUIREMENTS OF ALL APPLICABLE LAWS, RULES, AND REGULATIONS FOR THE USES AND OCCUPANCIES SPECIFIED HEREIN.

PERMISSIBLE USE AND OCCUPANCY

STORY	LIVE LOAD LBS. PER SQ. FT.	MAXIMUM NO. OF PERSONS PERMITTED	ZONING DWELLING OR ROOMING UNITS	BUILDING CODE HABITABLE ROOMS	ZONING USE GROUP	BUILDING CODE OCCUPANCY GROUP	DESCRIPTION OF USE
1st floor	100	300		10	3	6	[REDACTED]

OPEN SPACE USES NONE
(SPECIFY PARKING SPACES, LOADING BERTHS, OTHER USES, NONE)

NO CHANGE OF USE OR OCCUPANCY SHALL BE MADE UNLESS
A NEW AMENDED CERTIFICATE OF OCCUPANCY IS OBTAINED
THIS CERTIFICATE OF OCCUPANCY IS ISSUED SUBJECT TO FURTHER LIMITATIONS, CONDITIONS AND
SPECIFICATIONS NOTED ON THE REVERSE SIDE.

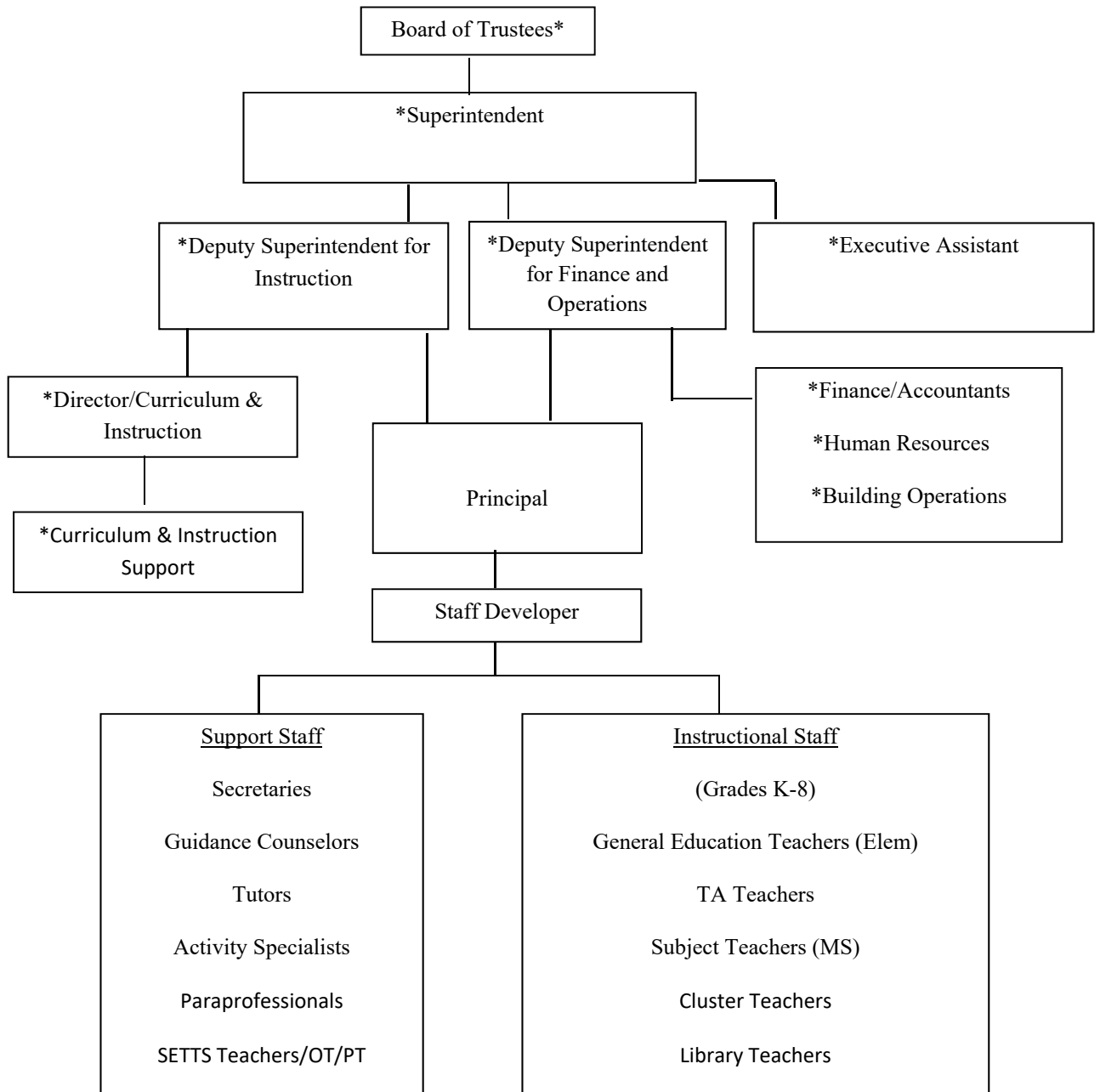
BOROUGH SUPERINTENDENT *William A. Shaker*

COMMISSIONER *[Signature]*
1986

ORIGINAL

OFFICE COPY - DEPARTMENT OF BUILDINGS

COPY



Icahn Charter School Organization Chart

*Network Shared Positions



ICAHN CHARTER SCHOOLS

2022-2023 School Year Calendar

Date	Weekday	Event
August 29-Sept. 1	Monday-Thursday	New Teacher Professional Development 8/29-9/1
September 1-2 & September 6-9	Thursday-Friday Tuesday-Friday	All Staff Report for Professional Development [There will be no classes for students]
September 5	Monday	Labor Day [Schools Closed]
*September 12	Monday	First Day of School for all Students
September 26-27	Monday & Tuesday	Rosh Hashanah [Schools Closed]
October 5	Wednesday	Yom Kippur [Schools Closed]
October 10	Monday	Indigenous Peoples' Day [Schools Closed]
November 8	Tuesday	Election Day [Remote Learning Day for Students] *All Staff Report for Professional Development
November 11	Friday	Veterans Day [Schools Closed]
November 24-25	Thursday & Friday	Thanksgiving Recess [Schools Closed]
December 26-30	Monday-Friday	Winter Recess [Schools Closed]
January 2	Monday	New Year's Day [Observed, Schools Closed] *All Staff & Students Return on Tuesday, January 3rd
January 16	Monday	Rev. Dr. Martin Luther King Jr. Day [Schools Closed]
February 20-24	Monday-Friday	Midwinter Recess [Schools Closed]
April 6-14	Thursday & Friday Monday-Friday	Spring Recess [Schools Closed]
April 21	Friday	Eid al-Fitr [Schools Closed]
May 29	Monday	Memorial Day [Schools Closed]
June 19	Monday	Juneteenth [Schools Closed]
June 30	Friday	Last Day of School for Students [12:00 pm Dismissal]