

Application: Exploration Elementary Charter School for Science and Technology

Casandra Vargas - cvargas@explorationrochester.org
Annual Reports

Summary

ID: 0000000265
Status: Liaison Review
Labels: Board of Regents

Entry 1 School Info and Cover Page

Completed Aug 3 2020

Instructions

Required of ALL Charter Schools

Each Annual Report begins with a completed School Information and Cover Page. The information is collected in a survey format within Annual Report portal. When entering information in the portal, some of the following items may not appear, depending on your authorizer and/or your responses to related items.

Entry 1 School Information and Cover Page

(New schools that were not open for instruction for the 2019-20 school year are not required to complete or submit an annual report this year).

Please be advised that you will need to complete this cover page (including signatures) before all of the other tasks assigned to you by your school's authorizer are visible on your task page. While completing this cover page task, please ensure that you select the correct authorizer **(as of June 30, 2020)** or you may not be assigned the correct tasks.

BASIC INFORMATION

a. SCHOOL NAME

(Select name from the drop down menu)

EXPLORATION ELEMENTARY CHARTER SCHOOL FOR SCIENCE AND TECHNOLOGY 261600861102

a1. Popular School Name

(No response)

b. CHARTER AUTHORIZER (As of June 30th, 2020)

Please select the correct authorizer as of June 30, 2020 or you may not be assigned the correct tasks.

BOARD OF REGENTS

c. DISTRICT / CSD OF LOCATION

ROCHESTER CITY SD

d. DATE OF INITIAL CHARTER

8/2015

e. DATE FIRST OPENED FOR INSTRUCTION

8/2017

f. APPROVED SCHOOL MISSION (Regents, NYCDOE, and Buffalo BOE authorized schools only)

MISSION STATEMENT

The mission of Exploration Elementary Charter School for Science and Technology (Exploration) is to engage students, their families, and the community in the processes of scientific inquiry and the use of innovative technology to develop the social, emotional, and academic tools necessary to thrive in school and in today's interconnected world.

g. KEY DESIGN ELEMENTS (Regents, NYCDOE, and Buffalo BOE authorized schools only)

KEY DESIGN ELEMENTS (Briefly describe each Key Design Elements (KDE) as presented in the schools approved charter. KDEs are those general aspects of the school that are innovative or unique to the school’s mission and goals, are core to the school’s overall design, and are critical to its success.

KDE 1	<p>Cross-Cutting Curricular, Scientific Inquiry, and Lab-Based Learning Opportunities:</p> <p>Students at Exploration Elementary Charter School attend Science Lab and Maker Space on a weekly basis in which they engage in opportunities to practice both the scientific method and engineering design process. In each situation, students are presented with overarching questions or problems and challenged to use critical thinking, creativity and collaboration to answer the question or develop solutions to the problem. Through our efforts to integrate STEM practices across curriculum, students develop ways to communicate results through written expression and technology driven presentations. Teachers facilitate learning by guiding students in research, data collection and analysis, making connections to the real world and drawing conclusions.</p>
KDE 2	<p>Balanced and Differentiated Instruction:</p> <p>Exploration is proud of the balanced and</p>

	<p>differentiated instruction that is provided to the Explorers.</p> <ul style="list-style-type: none"> -Students receive daily hands-on science (and lab) instruction aligned with NGSS -Extended school day provided to all -Each student receives daily intervention (math or ELA) during RtI time -Curricular resources are aligned to the CCLS, therefore, ensuring success on NYS testing for grades 3-4 -Through our partnership with Rochester Museum and Science Center, our students participate in the scientific inquiry approach, lab-based learning, cross curricular opportunities and curriculum that supports all students -Social emotional learning is infused within our students day -Students are given a baseline assessment to determine their learning needs -Use of data to inform curricular decisions -Use of a positive behavior management system (Wellness Center for students that struggle)
KDE 3	<p>Ongoing Professional Development and Learning (PD):</p> <p>Exploration strives to grow their employees just as they do for their students. During Summer PD days before the first day of school for SY 19-20, teachers and staff were provided training to support them in the roll out of routines, rituals, and academic curriculum. Teachers engaged in sessions around SchoolTool (student management system), Math Investigations, Lucy Calkins, The First 6 Weeks of School, and KaleidoscopeMe. Throughout the school year on the monthly half day Fridays, teachers and staff continued to receive training furthering their understanding of Math Investigations. In addition to that, they received training on PlayWorks to bring active movement into the classroom. Staff also received PlayWorks training during the COVID-19 closure. They also participated in several online professional development opportunities that they received via email during COVID-19.</p>

KDE 4	<p>Data-Driven Instruction and Accountability Aligned to Rigorous Academic Standards:</p> <p>As a school, Exploration ensures that the data we collect about the learning of our students drives our instruction. This means that teachers as well as intervention specialists and counselors test and record students' outcomes in many areas of need. Students are given a baseline each year both in an on-line evaluation and an in-person evaluation to assess their knowledge based on the New York State standards which are both rigorous and attainable. These assessments are ongoing through the year and are both formative and summative. This drives our instruction and tracks the growth of our students. For the 2020-2021 school year, teachers will be creating a data notebook for their classrooms and will be setting goals aligned with state standards for any Tier 2 and Tier 3 students. Teachers will be collecting that data and using it to look for students who may not be making sufficient progress. It will be able to be looked at through numbers and visual graphs. Teachers will have the support for research based interventions in ELA, Math and Behavioral needs. It will be shared and reviewed in cycles during the year. This will be a team approach as we support our students in all areas. Exploration is confident that the overall curriculum is targeting students of all levels both with academics and social emotional needs.</p>
KDE 5	<p>Community Connections and Partnerships:</p> <p>Exploration is proud of the community connections and partnerships that they have created and maintained throughout the 2019-2020 school year. Exploration partners with Rochester Museum and Science Center (RMSC) to bring the highest quality STEM curriculum to our Explorers as well as offer</p>

Explorers opportunities to visit and interact with the exhibits in the museum that align with the quarterly curriculum. RMSC also comes to the school to provide educational opportunities for Explorers to bring to life the curriculum they are learning about. In addition, RMSC hosted one of Exploration's monthly family nights where the museum was closed down to the public and open only for Exploration Staff, Explorers, and their families.

When it comes to social and emotional support for Explorers, Exploration partners with KaleidoscopeMe, EnCompass Learning, and the Catholic Family Center. KaleidoscopeMe provides Exploration with Tier 1 supports for classroom teachers and the Wellness Center. KaleidoscopeMe is rooted providing programs to Exploration's students that build character, instill life-enhancing values, and promote healthy choices through yoga, music, and movement.

EnCompass Learning provides Exploration with Navigation Services. Navigation is similar to case management in that it provides whole family support to overcome challenges inside and outside the classroom. Family Navigation supports students' academic success through building trusted relationships, safe and supported conditions and rigorous and culturally responsive academic support. The program is a partnership between schools, families, Navigators and the community with the goal of working together to support students in their academic success. Family Navigators provide coaching and parent support for school meetings and navigating the barriers to getting to and connecting to schools.

The Catholic Family Center provides an onsite therapist to support the social, emotional, and behavioral needs of Exploration's students whose families have enrolled their child into this therapy program. This therapist meets with these students once a week and partners with the family and teachers to support the needs of each of those

	students.
KDE 6	<p>Serving the Diverse Needs of all Students:</p> <p>Exploration strives to meet the diverse needs of all students. Exploration does this by providing quarterly assessments and using these assessments to make educational decisions about next steps in the classroom. In addition to classroom data dives to make next steps in instruction, Exploration's Intervention team meets quarterly to re-evaluate students falling in the red and yellow tiers in the RtI model. Also, Exploration has a Reading Coach that supports classroom teachers in their data analysis and their groupings to make instructional decisions on interventions and guided reading groups. This Reading Coach is also the facilitator of the Instructional Support Team. This team analyzes students that are referred and meets to create interventions and data collection forms for the classroom teacher to implement. Interventions are then reviewed on a six week basis to evaluate the student's progress. If a student is not responding, the Special Education Teacher(s) are looped in to consult with to determine (1) a different research based intervention to try and/or (2) if we may need to go to the Committee on Special Education.</p>
KDE 7	(No response)
KDE 8	(No response)
KDE 9	(No response)
KDE 10	(No response)

Need additional space for variables

No

h. SCHOOL WEB ADDRESS (URL)

explorationrochester.org

i. TOTAL MAX APPROVED ENROLLMENT FOR THE 2019-2020 SCHOOL YEAR (exclude Pre-K program enrollment)

325

j. TOTAL STUDENT ENROLLMENT ON JUNE 30, 2020 (exclude Pre-K program enrollment)

282

k. GRADES SERVED IN SCHOOL YEAR 2019-2020 (exclude Pre-K program students)

Check all that apply

Grades Served

K, 1, 2, 3

l1. DOES THE SCHOOL CONTRACT WITH A CHARTER OR EDUCATIONAL MANAGEMENT ORGANIZATION?

No

FACILITIES INFORMATION

m. FACILITIES

Will the school maintain or operate multiple sites in 2020-2021?

	No, just one site.
--	--------------------

School Site 1 (Primary)

m1. SCHOOL SITES

Please provide information on Site 1 for the upcoming school year.

	Physical Address	Phone Number	District/CSD	Grades to be Served at Site for coming year (K-5, 6-9, etc.)	Receives Rental Assistance for Which Grades (If yes, enter the appropriate grades. If no, enter No).
Site 1	1001 Lake Ave. Rochester, NY 14613	585-498-4700	Rochester	K-4	No

m1a. Please provide the contact information for Site 1.

	Name	Work Phone	Alternate Phone	Email Address
School Leader	Rachelle Simmons	585-498-4700		rsimmons@exporochester.org
Operational Leader	Casandra Vargas	585-498-4700		cvargas@exporochester.org
Compliance Contact	Casandra Vargas	585-498-4700		cvargas@exporochester.org
Complaint Contact	Rachelle Simmons	585-498-4700		rsimmons@exporochester.org
DASA Coordinator	Courtney Hawkins	585-498-4700		chawkins@exporochester.org
Phone Contact for After Hours Emergencies	Rachelle Simmons	585-498-4700		rsimmons@exporochester.org

m1b. Is site 1 in public (co-located) space or in private space?

Private Space

IF LOCATED IN PRIVATE SPACE IN NYC OR IN DISTRICTS OUTSIDE NYC

m1d. Upload a current Certificate of Occupancy (COO) and the annual Fire Inspection Report for school site 1 if located in private space in NYC or located outside of NYC .

Certificate of Occupancy and Fire Inspection. Provide a copy of a current and non-expired certificate of occupancy (if outside NYC or in private space in NYC). For schools that are not in district space (NYC co-locations), provide a copy of a current and non-expired certificate of occupancy, and a copy of the current annual fire inspection results, which should be dated on or after July 1, 2020.

Site 1 Certificate of Occupancy (COO)

[COO.pdf](#)

Filename: COO.pdf **Size:** 132.6 kB

Site 1 Fire Inspection Report

[Fire Report.pdf](#)

Filename: Fire Report.pdf **Size:** 94.0 kB

CHARTER REVISIONS DURING THE 2019-2020 SCHOOL YEAR

n1. Were there any revisions to the school's charter during the 2019-2020 school year? (Please include approved or pending material and non-material charter revisions).

No

PLEASE NOTE CHARTER SCHOOLS WILL NO LONGER SUBMIT FINANCIAL STATEMENTS, ANNUAL BUDGETS, AND RELATED FISCAL DATA VIA THE ANNUAL REPORT. HOWEVER, NYSED BOARD OF REGENTS WOULD LIKE TO KNOW IF YOUR SCHOOL'S BOARD OF TRUSTEES HAS APPROVED A BUDGET FOR THE 2020-2021 FISCAL YEAR.

o. Has your school's Board of Trustee's approved a budget for the 2020-2021 FY?

Yes

ATTESTATION

p. Individual Primarily Responsible for Submitting the Annual Report.

Name	Rachelle Simmons
Position	School Leader
Phone/Extension	585-498-4700-4712
Email	rsimmons@exporochester.org

p. Our signatures (Executive Director/School Leader/Head of School and Board President) below attest that all of the information contained herein is truthful and accurate and that this charter school is in compliance with all aspects of its charter, and with all pertinent Federal, State, and local laws, regulations, and rules. We understand that if any information in any part of this report is found to have been deliberately misrepresented, that will constitute grounds for the revocation of our charter. Check **YES if you agree and then use the mouse on your PC or the stylus on your mobile device to sign your name).**

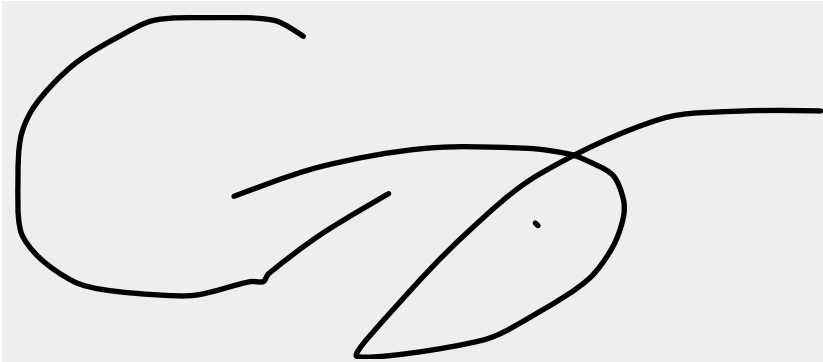
Responses Selected:

Yes

Signature, Head of Charter School

A handwritten signature in black ink on a light gray background. The signature is cursive and reads "Rachelle Simmons".

Signature, President of the Board of Trustees



Date

Aug 3 2020

Thank you.



Entry 2 NYS School Report Card

Completed Aug 3 2020 Hidden from applicant

[Instructions](#)

SUNY-authorized charter schools only

Provide a direct web link to the most recent New York State School Report Card for the charter school (See <https://reportcards.nysed.gov/>) . This report captures school-level enrollment and demographic information, staff qualifications, electronic student records, and attendance rates, as prescribed by New York State statute (8 NYCRR 119.3).

Entry 2 NYS School Report Card Link

**EXPLORATION ELEMENTARY CHARTER SCHOOL FOR SCIENCE AND TECHNOLOGY
261600861102**

NEW YORK STATE REPORT CARD

Provide a direct URL or web link to the most recent New York State School Report Card for the charter school (See <https://reportcards.nysed.gov/>).

(Charter schools completing year one will not yet have a School Report Card or link to one.

Please type "URL is not available" in the space provided.)

<https://data.nysed.gov/profile.php?instid=800000086905>

Entry 3 Progress Toward Goals

Completed Nov 2 2020

Instructions

Regents, NYCDOE, and Buffalo BOE-authorized charter schools

For the 2019-2020 school year, any academic or organization goals that cannot be evaluated due to school closure resulting in a lack of data and changes in testing, surveying, and other usual practices should be reported as "N/A".

Entry 3 Progress Toward Goals

PROGRESS TOWARD CHARTER GOALS

Board of Regents-authorized and NYCDOE-authorized charter schools only.

Complete the tables provided. List each goal and measure as contained in the school's currently approved charter, and indicate whether the school has met or not met the goal. Please provide information for all goals no later than November 2, 2020.

1. ACADEMIC STUDENT PERFORMANCE GOALS

For the 2019-2020 school year, any academic goals that cannot be evaluated due to school closure resulting in a lack of data and changes in testing, surveying, and other usual practices should be reported as “N/A”.

2019-20 Progress Toward Attainment of Academic Goals

	Academic Student Performance Goal	Measure Used to Evaluate Progress Toward Attainment of Goal	Goal - Met, Not Met or Unable to Assess	If not met, describe efforts the school will take to meet goal. If unable to assess goal, type N/A for Not Applicable
Academic Goal 1				
Academic Goal 2				
Academic Goal 3				
Academic Goal 4				
Academic Goal 5				
Academic Goal 6				
Academic Goal 7				
Academic Goal 8				
Academic Goal 9				
Academic Goal 10				

2. Do have more academic goals to add?

No

3. Do have more academic goals to add?

(No response)

4. ORGANIZATION GOALS

For the 2019-2020 school year, any organization goals that cannot be evaluated due to school closure resulting in a lack of data and changes in testing, surveying, and other usual practices should be reported as “N/A”.

2019-2020 Progress Toward Attainment of Organization Goals

	Organizational Goal	Measure Used to Evaluate Progress	Goal - Met, Not Met, or Unable to Assess	If not met, describe efforts the school will take to meet goal. If unable to assess goal, type N/A for Not Applicable
Org Goal 1				
Org Goal 2				
Org Goal 3				
Org Goal 4				
Org Goal 5				
Org Goal 6				
Org Goal 7				

Org Goal 8				
Org Goal 9				
Org Goal 10				
Org Goal 11				
Org Goal 12				
Org Goal 13				
Org Goal 14				
Org Goal 15				
Org Goal 16				
Org Goal 17				
Org Goal 18				
Org Goal 19				
Org Goal 20				

5. Do have more organizational goals to add?

No

6. FINANCIAL GOALS

2019-2020 Progress Toward Attainment of Financial Goals

	Financial Goals	Measure Used to Evaluate Progress	Goal - Met, Not Met, or Partially Met	If not met, describe efforts the school will take to meet goal.
Financial Goal 1				
Financial Goal 2				
Financial Goal 3				
Financial Goal 4				
Financial Goal 5				

7. Do have more financial goals to add?

No

Thank you.

Entry 3 Accountability Plan Progress Reports

Incomplete Hidden from applicant

Instructions

SUNY-Authorized Charter Schools ONLY

SUNY-authorized charter schools must download an [Accountability Plan Progress Report template](#). After completing, schools must upload the document into the by September 15, 2020.

Entry 7 Disclosure of Financial Interest Form

Completed Aug 3 2020

Instructions - Multiple Uploads Permitted

Required of ALL Charter Schools by August 3

Each member of the charter school's Board of Trustees who served on a charter school education corporation governing one or more charter schools for any period during the 2019-2020 school year must complete a signed:

- **Regents, NYCDOE, and Buffalo BOE Authorized Schools:** [Disclosure of Financial Interest Form](#)
- **SUNY- Authorized Charter Schools:** [Trustee Financial Disclosure Form](#)

All completed forms must be collected and uploaded in .PDF format for each individual member. If a trustee is not able or available to complete the form by the deadline, the education corporation is responsible for doing so on behalf of the trustee. (Forms completed from past years will not be accepted).

Trustees serving on an education corporation that governs more than one school are not required to complete a separate disclosure for each school governed by the education corporation. In the Disclosure of Financial Interest Form, trustees must disclose information relevant to any of the schools served by the governing education corporation.

BOT FDS

Filename: BOT FDS.pdf **Size:** 575.3 kB

Entry 8 BOT Membership Table

Completed Aug 3 2020

Instructions

Required of All charter schools

ALL charter schools or education corporations governing multiple schools must complete the Board of Trustees Membership Table within the online portal. Please be sure to include and identify parents who are members of the Board of Trustees and indicate whether parents are voting or non-voting members.

Entry 8 BOT Table

1. SUNY-AUTHORIZED charter schools are required to provide information for VOTING Trustees only.
2. REGENTS, NYCDOE, and BUFFALO BOE-AUTHORIZED charter schools are required to provide information for all --VOTING and NON-VOTING-- trustees.

EXPLORATION ELEMENTARY CHARTER SCHOOL FOR SCIENCE AND TECHNOLOGY 261600861102

1. 2019-2020 Board Member Information (Enter info for each BOT member)

	Trustee Name and Email Address	Position on the Board	Committee Affiliations	Voting Member Per By-Laws (Y/N)	Number of Terms Served	Start Date of Current Term (MM/DD/YYYY)	End Date of Current Term (MM/DD/YYYY)	Board Meetings Attended During 2019-2020
1	Carlos Cong [REDACTED]	Chair	Executive , Academic s, Finance	Yes	1	01/01/2018	12/31/2020	11
2	Maya Crane	Vice Chair	Human Resource s, Communi ty Partnersh ips	Yes	1	09/03/2018	09/31/2021	11
3	Kimberly Lamagli	Secretary	Audit/Fin ance	Yes	1	08/01/2018	08/01/2021	10
4	Lonnette Merrima m	Treasurer	Finance/ Governan ce/Faciliti es	Yes	1	06/01/2018	06/01/2021	9
5	Kevin Williams	Trustee/M ember	Executive / Human Resource s	Yes	1	01/01/2018	12/31/2020	10
6	Sam	Trustee/M ember	Academic s	Yes	1	02/14/2020	02/14/2023	5 or less
7	Samanth a Colson	Trustee/M ember	Finance	Yes	1	02/14/2020	02/14/2023	5 or less
8								
9								

1a. Are there more than 9 members of the Board of Trustees?

No

2. INFORMATION ABOUT MEMBERS OF THE BOARD OF TRUSTEES

1. SUNY-AUTHORIZED charter schools provide response relative to VOTING Trustees only.
2. REGENTS, NYCDOE, and BUFFALO BOE-AUTHORIZED charter schools provide a response relative to all trustees.

a. Total Number of BOT Members on June 30, 2020	7
b.Total Number of Members Added During 2019-2020	2
c. Total Number of Members who Departed during 2019-2020	1
d.Total Number of members, as set in Bylaws, Resolution or Minutes	At least 5 no more then 11

3. Number of Board meetings held during 2019-2020

14

4. Number of Board meetings scheduled for 2020-2021

12

Thank you.

Entry 9 Board Meeting Minutes

Completed Aug 3 2020

Instructions

Schools must upload a complete set of monthly board meeting minutes (July 2019-June 2020), which should match the number of meetings held during the 2019-2020 school year, as indicated in the above table. The minutes provided must be the final version approved by the school's Board of Trustees and may be uploaded individually or as one single combined file. Board meeting minutes must be submitted by August 3, 2020.

[BOT Mins](#)

Filename: BOT Mins.pdf **Size:** 45.3 kB

Entry 10 Enrollment & Retention

Completed Aug 3 2020

[Instructions for submitting Enrollment and Retention Efforts](#)

ALL charter schools must complete this section. Describe the efforts the charter school has made toward meeting targets in 2018-2019 to attract and retain enrollment of Students with Disabilities (SWDs), English Language Learners/Multilingual Learners (ELLs/MLLs), and students who are economically disadvantaged. In addition, describe the school's plans for meeting or making progress toward meeting its enrollment and retention targets in 2019-2020.

Entry 10 Enrollment and Retention of Special Populations

[Instructions for Reporting Enrollment and Retention Strategies](#)

Describe the efforts the charter school has made in 2019-2020 toward meeting targets to attract and retain enrollment of students with disabilities, English language learners/Multilingual learners, and students who are economically disadvantaged. In addition, describe the school's plans for meeting or making progress toward meeting its enrollment and retention targets in 2020-2021.

EXPLORATION ELEMENTARY CHARTER SCHOOL FOR SCIENCE AND TECHNOLOGY 261600861102

Recruitment/Attraction Efforts Toward Meeting Targets

	Describe Recruitment Efforts in 2019-2020	Describe Recruitment Plans in 2020-2021
		GoodSchoolsRoc provided support with recruitment

Economically Disadvantaged	<p>Social Media blasts Postcard mailers</p> <p>Door-to-door visits Community Banners Kindergarten screenings Attended Head Start Open Houses</p> <p>Attend Charter School Open Houses</p> <p>Direct mailings to RCSD pre-K populations</p> <p>Brochures in school and community locations</p> <p>Billboards Radio advertisements</p> <p>Request for parent support (word of mouth)</p>	<p>Provided translation services for families TESOL Services</p> <p>Advertisement on the radio in Spanish</p> <p>Social Media blasts Postcard mailers</p> <p>Door-to-door visits Community Banners Kindergarten screenings Attended Head Start Open Houses</p> <p>Attend Charter School Open Houses</p> <p>Direct mailings to RCSD pre-K populations</p> <p>Brochures in school and community locations</p> <p>Billboards Radio advertisements</p> <p>Request for parent support (word of mouth)</p>
English Language Learners/Multilingual Learners	<p>Provided translation services for families TESOL Services</p> <p>Advertisement on the radio in Spanish</p> <p>Social Media blasts Postcard mailers</p> <p>Door-to-door visits Community Banners Kindergarten screenings Attended Head Start Open Houses</p> <p>Attend Charter School Open Houses</p> <p>Direct mailings to RCSD pre-K populations</p> <p>Brochures in school and community locations</p> <p>Billboards Radio advertisements</p> <p>Request for parent support (word of mouth)</p>	<p>GoodSchoolsRoc provided support with recruitment</p> <p>Provided translation services for families TESOL Services</p> <p>Advertisement on the radio in Spanish</p> <p>Social Media blasts Postcard mailers</p> <p>Door-to-door visits Community Banners Kindergarten screenings Attended Head Start Open Houses</p> <p>Attend Charter School Open Houses</p> <p>Direct mailings to RCSD pre-K populations</p> <p>Brochures in school and community locations</p> <p>Billboards Radio advertisements</p> <p>Request for parent support (word of mouth)</p>
		<p>GoodSchoolsRoc provided support with recruitment</p> <p>Provided translation services for</p>

Students with Disabilities	<p>Reached out to families regarding special programming</p> <p>Social Media blasts Postcard mailers</p> <p>Door-to-door visits Community Banners Kindergarten screenings</p> <p>Attended Head Start Open Houses</p> <p>Attend Charter School Open Houses</p> <p>Direct mailings to RCSD pre-K populations</p> <p>Brochures in school and community locations</p> <p>Billboards Radio advertisements</p> <p>Request for parent support (word of mouth)</p>	<p>families TESOL Services</p> <p>Advertisement on the radio in Spanish</p> <p>Social Media blasts Postcard mailers</p> <p>Door-to-door visits Community Banners Kindergarten screenings</p> <p>Attended Head Start Open Houses</p> <p>Attend Charter School Open Houses</p> <p>Direct mailings to RCSD pre-K populations</p> <p>Brochures in school and community locations</p> <p>Billboards Radio advertisements</p> <p>Request for parent support (word of mouth)</p>
----------------------------	--	---

Retention Efforts Toward Meeting Targets

	Describe Retention Efforts in 2019-2020	Describe Retention Plans in 2020-2021
Economically Disadvantaged	<p>Positive social media campaigns</p> <p>Increased PBIS programming school wide, hosting events each Friday for all students</p> <p>Expo Closet</p> <p>Foodlink Backpack Programming</p> <p>Visits and supports for McKinney Vento students (family visit programming) Catholic Family Center counseling onsite</p> <p>School wide use of Class Dojo to communicate with families</p> <p>Parent satisfaction survey Family Corner on Exploration website</p> <p>Education Success Foundation</p> <p>Navigation services for identified families</p> <p>Monthly family night events</p>	<p>Positive social media campaigns</p> <p>Increased PBIS programming school wide, hosting events each Wednesday for all students virtually</p> <p>Expo Closet</p> <p>Foodlink Backpack Programming</p> <p>Virtual Visits and supports for McKinney Vento students (family virtual visit programming)</p> <p>Catholic Family Center virtual counseling</p> <p>School wide use of Class Tag to communicate with families</p> <p>Parent satisfaction survey Family Corner on Exploration website</p> <p>Education Success Foundation</p> <p>Navigation services for identified</p>

	<p>Lollypop Farms</p> <p>Pet Therapy</p> <p>4H programming</p> <p>Classroom yoga and mindfulness curriculum used daily</p> <p>Actively seeking partnerships and resources (grants/community resources) to support Economically Disadvantaged children</p>	<p>families</p> <p>Virtual quarterly family night events</p> <p>Virtual classroom yoga and mindfulness curriculum used daily</p> <p>Actively seeking partnerships and resources (grants/community resources) to support Economically Disadvantaged children</p>
English Language Learners/Multilingual Learners	<p>Positive social media campaigns (multilingual posts) Increased PBIS programming school wide, hosting events each Friday for all students</p> <p>Expo Closet</p> <p>Visits and supports for McKinney Vento students (family visit programming) Catholic Family Center on-site counseling</p> <p>School wide use of Class Dojo to communicate with families</p> <p>Parent satisfaction survey Family Corner on Exploration website</p> <p>Education Success Foundation</p> <p>Navigation services for identified families</p> <p>Increasing Spanish-speaking staff</p> <p>Actively seeking partnerships and resources(grants/community resources) to support ELL students and Multilingual Learners</p>	<p>Positive social media campaigns (multilingual posts) Increased PBIS programming school wide, hosting virtual events each Wednesday for all students</p> <p>Expo Closet</p> <p>Virtual visits and supports for McKinney Vento students (family visit programming) Catholic Family Centen virtual counseling</p> <p>School wide use of Class Tag to communicate with families</p> <p>Parent satisfaction survey Family Corner on Exploration website</p> <p>Education Success Foundation</p> <p>Navigation services for identified families</p> <p>Increasing Spanish-speaking staff</p> <p>Actively seeking partnerships and resources(grants/community resources) to support ELL students and Multilingual Learners</p>
Students with Disabilities	<p>Positive social media campaigns</p> <p>Classroom accommodations and modifications for identified students</p> <p>Busing supports (monitors)</p> <p>Met with Dr.Heatly(UofR) to help implement additional students supports and best practices</p>	<p>Establishing The Wellness Center</p> <p>Working with Deb Hanmer to create school wide MTSS Process</p> <p>Increasing number of Special Education Teachers</p> <p>Increasing Rtl blocks for 3rd and 4th grade</p>

	Safety plans Behavior plans Coordinated services with RCSD for IEP services Collaborated with families and connected them with resources	students Actively seeking partnerships and resources (grants/community resources) to support students with disabilities
--	--	---

Entry 12 Percent of Uncertified Teachers

Completed Aug 3 2020

Instructions

Required of Regents, NYCDOE, and Buffalo BOE Authorized Charter Schools ONLY

The table below reflects the information collected through the online portal for compliance with New York State Education Law 2854(3)(a-1) for teaching staff qualifications. Uncertified teachers are those not certified pursuant to the State Certification Requirements established by the NYSED Commissioner of Education.

Entry 12 Uncertified Teachers

School Name: EXPLORATION ELEMENTARY CHARTER SCHOOL FOR SCIENCE AND TECHNOLOGY
261600861102

Instructions for Reporting Percent of Uncertified Teachers

Required of Regents, NYCDOE, and Buffalo BOE Authorized Charter Schools

The table below reflects the information collected through the online portal for compliance with New York State Education Law 2854(3)(a-1) for teaching staff qualifications. Uncertified teachers are those not certified pursuant to the State Certification Requirements established by the NYSED Commissioner of Education. Enter the relevant full-time equivalent (FTE) count of teachers in each column. For example, a school with 20 full-time teachers and 5 half-time teachers would have an FTE count of 22.5.

If more than one line applies to a teacher, please include in only one FTE uncertified category. Please do not include paraprofessionals, such as teacher aides.

CATEGORY A. 30% OR 5 UNCERTIFIED TEACHERS WHICHEVER IS LESS

	FTE Count
i. FTE count of uncertified teacher with at least three years of elementary, middle or secondary classroom teaching experience (as of June 30, 2020)	4
ii. FTE count of uncertified teachers who are tenured or tenure track college faculty (as of June 30, 2020)	0
iii. FTE count of uncertified teachers with two years of Teach for America experience (as of June 30, 2020)	0
iv. FTE count of uncertified teachers with exceptional business, professional, artistic, athletic, or military experience (as June 30, 2020)	2
Total Category A: 5 or 30% whichever is less	6.0

CATEGORY B. PLUS FIVE UNCERTIFIED TEACHERS IN MATHEMATICS, SCIENCE, COMPUTER SCIENCE, TECHNOLOGY OR CAREER AND TECHNICAL EDUCATION.

	FTE Count
i. FTE count of uncertified teacher with at least three years of elementary, middle or secondary classroom teaching experience (as of June 30, 2020)	0
ii. FTE count of uncertified teachers who are tenured or tenure track college faculty (as of June 30, 2020)	0
iii. FTE count of uncertified teachers with two years of Teach for America experience (as of June 30, 2020)	0
iv. FTE count of uncertified teachers with exceptional business, professional, artistic, athletic, or military experience (as June 30, 2020)	0
Total Category B: not to exceed 5	0.0

CATEGORY C: PLUS 5 ADDITIONAL UNCERTIFIED TEACHERS

	FTE Count
i. FTE count of uncertified teacher with at least three years of elementary, middle or secondary classroom teaching experience (as of June 30, 2020)	0
ii. FTE count of uncertified teachers who are tenured or tenure track college faculty (as of June 30, 2020)	0
iii. FTE count of uncertified teachers with two years of Teach for America experience (as of June 30, 2020)	0
iv. FTE count of uncertified teachers with exceptional business, professional, artistic, athletic, or military experience (as June 30, 2020)	0
Total Category C: not to exceed 5	0.0

CATEGORY D: TOTAL FTE COUNT OF UNCATEGORIZED, UNCERTIFIED TEACHERS

(Include teachers who do not fit in one of these categories or if did fit would exceed the numerical limits for that category)

	FTE Count
Total Category D	0

CATEGORY E: TOTAL FTE COUNT OF CERTIFIED TEACHERS

	FTE Count
Total Category E	15

CATEGORY F: TOTAL FTE COUNT OF ALL TEACHERS

Please do not include paraprofessionals, such as teacher aides.

	FTE Count
Total Category F	21



Thank you.

Entry 13 Organization Chart

Completed Aug 3 2020

[Instructions](#)

Required of Regents, NYCDOE, and Buffalo BOE Authorized Charter Schools ONLY

Upload the 2019-2020 **Organization Chart**. The organization chart should include position titles and reporting relationships. Employee names should not appear on the chart.

[Organizational Chart](#)

Filename: Organizational Chart 4u8i5fq.pdf **Size:** 63.0 kB

Entry 14 School Calendar

Completed Aug 3 2020

[Instructions for submitting School Calendar](#)

Required of ALL Charter Schools

Given these uncertain and changing times, charter schools may or may not have a school calendar ready to upload by the submission deadline this year of August 3, 2020. If the charter school has a tentative calendar based on available information and guidance at the time, please submit with the August 3rd submission. Charter schools will be able to upload an updated school calendar into the portal at any time but no later than **September 15, 2020**.

School calendars must meet the [minimum instructional requirements](#) adopted by the Board of Regents in 2018.

Board of Regents-authorized charter schools are required to submit school calendars that clearly indicate the start and end date of the instructional year AND the number of instructional hours and/or instructional days for each month.

[Calendar 2020-21 school year](#)

Filename: Calendar 2020 21 school year.pdf **Size:** 248.0 kB

Entry 15 Links to Critical Documents on School Website

Completed Aug 3 2020

Instructions

Required of Regents, NYCDOE, and Buffalo BOE Authorized Charter Schools ONLY

By law, each charter school is required to maintain certain notices and policies listed on its website. Please insert the link from the school's website for each of the items:

1. Most recently filed Annual Report (i.e., 2018-19 Annual Report);
2. Most recent board meeting notice, documents to be discussed at the meeting (if any), and webcast of Board meetings (if held virtually per Governor's Executive Order);
3. Link to New York State School Report Card;
4. Lottery Notice announcing date of lottery;
5. Authorizer-approved DASA Policy;
6. District-wide safety plan and Authorizer-approved Discipline Policy (as per August 29, 2019 [Emergency Response Plan Memo](#));
7. Authorizer-approved FOIL Policy; and
8. Subject matter list of FOIL records.
9. Link to School Reopening Plan

Form for Entry 15 Links to Critical Documents on School Website

School Name: Exploration Elementary Charter School for Science and Technology

Required of Regents, NYCDOE, and Buffalo BOE Authorized Charter Schools ONLY

By law, each charter school is required to maintain certain notices and policies listed on its website. Please insert the link from the school's website for each of the items:

	Link to Documents
1. Most Recent Annual Report (i.e., 2018-19)	https://www.explorationrochester.org
2. Most Recent Board Meeting Notice and Related Agenda Item Documents	https://www.explorationrochester.org/trustees
2a. Webcast of Board Meetings (per Governor's Executive Order)	https://www.explorationrochester.org/trustees
3. Link to NYS School Report Card	https://www.explorationrochester.org
4. Most Recent Lottery Notice Announcing Lottery	https://www.goodschoolsroc.org/portfolio-items/exploration-elementary-charter-school-for-science-technology/
5. Authorizer-Approved DASA Policy	https://www.explorationrochester.org/title-ix-dasa
6. District-wide Safety Plan	https://www.explorationrochester.org
6a. Authorizer-Approved Discipline Policy (as per August 29, 2019 Emergency Response Plan Memo)	https://14772b88-4fea-440e-9121-436fd4eaaeab.filesusr.com/ugd/c5580c_699d4aed20b547acbde62f7873ec96fc.pdf
7. Authorizer-Approved FOIL Policy	https://www.explorationrochester.org/trustees
8. Subject matter list of FOIL records	https://www.explorationrochester.org/trustees
9. Link to School Reopening Plan	https://www.explorationrochester.org/reopeningplan

Thank you.



Entry 16 COVID 19 Related Information

Completed Aug 3 2020

Instructions

Required of ALL charter schools

Please provide the number of students attending instruction on the last day instruction was provided

within physical school facilities and the number of students participating in virtual programming on the last day such programming was offered for the 2019-2020 school year.

If applicable, please provide the name and publisher of all end of year assessments provided by grade level as well as the number of participating students. Board of Regents-authorized charter schools are encouraged to refer to Appendix B of the [Remote Monitoring and Oversight Plan Spring 2020](#) remote for best practices regarding end of year assessments in a remote learning environment.

Entry 16 COVID 19 Related Information

School Name: Exploration Elementary Charter School for Science and Technology

TABLE 1: 2019-2020 Enrollment, Attendance and Participation Between March-June 2020

Please provide the number of students attending instruction on the last day instruction was provided within physical school facilities and the number of students participating in virtual programming on the last day such programming was offered for the 2019-2020 school year.

	Number of students enrolled in school on the last day instruction was provided within physical school facilities	Number of students attending instruction on the last day instruction was provided within physical school facilities	Number of students participating in virtual programming on the last day such programming was offered for the 2019-20 school year
	282	232	242

Table 2: 2019-2020 Assessments and Grade Participation

If applicable, please provide the name and publisher of all end of year assessments provided by grade level as well as the number of participating students. Board of Regents-authorized charter schools are encouraged to refer to Appendix B of the [Remote Monitoring and Oversight Plan Spring 2020](#) remote for best practices regarding end of year assessments in a remote learning environment.

Assess	Grade	Grade	Grade	Grade 3	Grade 4	Grade 5	Grade 6	Grade 7	Grade 8	Grade 9	Grade	Grade	Grade	Grade	Number

	me nt Title	K	1	2								10	11	12	r of Parti cipa ting Stud ents
	i- Rea dy Mat h	✓	✓	✓	✓	✗	✗	✗	✗	✗	✗	✗	✗	✗	128
	i- Rea dy ELA	✓	✓	✓	✓	✗	✗	✗	✗	✗	✗	✗	✗	✗	160
		✗	✗	✗	✗	✗	✗	✗	✗	✗	✗	✗	✗	✗	
		✗	✗	✗	✗	✗	✗	✗	✗	✗	✗	✗	✗	✗	
		✗	✗	✗	✗	✗	✗	✗	✗	✗	✗	✗	✗	✗	
		✗	✗	✗	✗	✗	✗	✗	✗	✗	✗	✗	✗	✗	
		✗	✗	✗	✗	✗	✗	✗	✗	✗	✗	✗	✗	✗	
		✗	✗	✗	✗	✗	✗	✗	✗	✗	✗	✗	✗	✗	
		✗	✗	✗	✗	✗	✗	✗	✗	✗	✗	✗	✗	✗	
		✗	✗	✗	✗	✗	✗	✗	✗	✗	✗	✗	✗	✗	
		✗	✗	✗	✗	✗	✗	✗	✗	✗	✗	✗	✗	✗	
		✗	✗	✗	✗	✗	✗	✗	✗	✗	✗	✗	✗	✗	
		✗	✗	✗	✗	✗	✗	✗	✗	✗	✗	✗	✗	✗	
		✗	✗	✗	✗	✗	✗	✗	✗	✗	✗	✗	✗	✗	
		✗	✗	✗	✗	✗	✗	✗	✗	✗	✗	✗	✗	✗	
		✗	✗	✗	✗	✗	✗	✗	✗	✗	✗	✗	✗	✗	
		✗	✗	✗	✗	✗	✗	✗	✗	✗	✗	✗	✗	✗	

		X	X	X	X	X	X	X	X	X	X	X	X	X	
		X	X	X	X	X	X	X	X	X	X	X	X	X	
		X	X	X	X	X	X	X	X	X	X	X	X	X	
		X	X	X	X	X	X	X	X	X	X	X	X	X	
		X	X	X	X	X	X	X	X	X	X	X	X	X	
		X	X	X	X	X	X	X	X	X	X	X	X	X	
		X	X	X	X	X	X	X	X	X	X	X	X	X	
		X	X	X	X	X	X	X	X	X	X	X	X	X	
		X	X	X	X	X	X	X	X	X	X	X	X	X	
		X	X	X	X	X	X	X	X	X	X	X	X	X	
Tota															288.
I															0

Entry 17 Staff Roster - NEW TASK For Regents Schools Only

Completed Aug 3 2020

[INSTRUCTIONS - NEW TASK FOR REGENTS-AUTHORIZED CHARTER SCHOOLS](#)

Please provide the full name of **ANY and ALL instructional and non-instructional employees** and their respective positions/titles, and employment start dates in the charter school by clicking on the MS Excel file link to the [Staff Roster](#).

[Staff Roster as of 8-3-2020](#)

Filename: Staff Roster as of 8 3 2020 GCERoxi.xlsx **Size:** 16.7 kB

<p align="center">Disclosure of Financial Interest by a Current or Proposed Board of Trustees Member</p>

Name:

Carlos Cong

Name of Charter School Education Corporation (the Charter School Name, if the charter school is the only school operated by the education corporation):

Exploration Charter for Science and Technology

1. List all positions held on the education corporation Board of Trustees ("Board") (e.g. president, treasurer, parent representative).

Board Chair.

2. ☐ Are you an employee of any school operated by the education corporation?
____ Yes ☒ No

If **Yes**, for each school, please provide a description of the position(s) you hold, your responsibilities, your salary and your start date.

3. Are you related, by blood or marriage, to any person employed by the school?

If **Yes**, please describe the nature of your relationship and how this person could benefit from your participation.

No

4. Are you related, by blood, marriage, or legal adoption/guardianship, to any student currently enrolled in the school?

If **Yes**, please describe the nature of your relationship and how this person could benefit from your participation.

NO

5. Are you related, by blood or marriage, to any person that could otherwise benefit from your participation as a board member of this school?

If Yes, please describe the nature of your relationship and how this person could benefit from your participation.

No

6. Are you a past, current, or prospective employee of the charter school, education corporation, and/or an entity that provides comprehensive management services ("CMO"), whether for-profit or not-for-profit, which contracts, or may contract, with the charter school or education corporation; or do you serve as an employee, officer, or director of, or own a controlling interest in, a business or entity that contracts, or does business with, or plans to contract or do business with, the charter school, education corporation, and/or a CMO, whether for-profit or not-for-profit, including, but not limited to, the lease of real or personal property to the said entities?

___ Yes ☐ . No ☐

If Yes, please provide a description of the position(s) you hold, your responsibilities, your salary and your start date.

7. Identify each interest/transaction (and provide the requested information) that you or any of your immediate family members or any persons who live with you in your house have held or engaged in with the charter school(s) operated by the education corporation during the time you have served on the Board, and in the six-month period prior to such service. If there has been no such interest or transaction, write **None**. Please note that if you answered **Yes** to Questions 2-3 above, you need not disclose again your employment status, salary, etc.

Date(s)	Nature of financial interest/transaction	Steps taken to avoid a conflict of interest, (e.g., did not vote, did not participate in discussion)	Name of person holding interest or engaging in transaction and relationship to you
<i>None</i>	<i>None</i>	<i>None</i>	<i>None.</i>

8. Identify each individual, business, corporation, union association, firm, partnership, franchise holding company, joint-stock company, business or real estate trust, non-profit organization, or other organization or group of people doing business with the school(s) operated by the education corporation **and** in which such entity, during the time of your tenure as a trustee, you and/or your immediate family member(s) or person(s) living in your house had a financial interest or other relationship. If you are a member, director, officer or employee of an organization formally partnered with the school(s) that is/are doing business with the school(s) through a management or services agreement, please identify only the name of the organization, your position in the organization, and the relationship between such organization and the school(s). If there was no financial interest, write "**None.**"

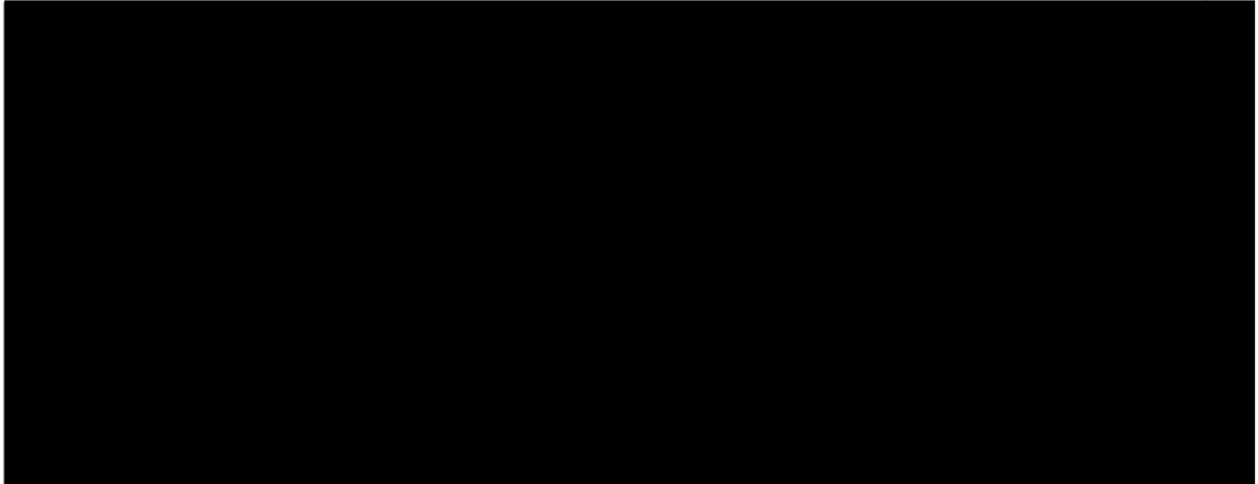
Organization conducting business with the school(s)	Nature of business conducted	Approximate value of the business conducted	Name of Trustee and/or immediate family member of household holding an interest in the organization conducting business with the school(s) and the nature of the interest	Steps taken to avoid conflict of interest
Paychex	Payroll/Time and Attendance	~ \$45k YoY	Myself	recuse myself from any vote or discussion around Paychex

Carlos Cong (Digital signature, August 3rd, 3:49pm)

Signature

Date

Please note that this document is considered a public record and, as such, may be made available to members of the public upon request under the Freedom of Information Law. Personal contact information provided below will be redacted.



last revised 06/6/2020

**Disclosure of Financial Interest by a Current or Proposed Board of
Trustees Member**

Name:
Maya Crane

Name of Charter School Education Corporation (the Charter School Name, if the charter school is the only school operated by the education corporation):

___Exploration Elementary Charter School or Science and Technology___

1. List all positions held on the education corporation Board of Trustees ("Board") (e.g. president, treasurer, parent representative).

Vice President

2. Are you an employee of any school operated by the education corporation?
___Yes_x___No

If **Yes**, for each school, please provide a description of the position(s) you hold, your responsibilities, your salary and your start date.

3. Are you related, by blood or marriage, to any person employed by the school?

If **Yes**, please describe the nature of your relationship and how this person could benefit from your participation.

No

4. Are you related, by blood, marriage, or legal adoption/guardianship, to any student currently enrolled in the school?

If **Yes**, please describe the nature of your relationship and how this person could benefit from your participation.

No

5. Are you related, by blood or marriage, to any person that could otherwise benefit from your participation as a board member of this school?

If Yes, please describe the nature of your relationship and how this person could benefit from your participation.

No

6. Are you a past, current, or prospective employee of the charter school, education corporation, and/or an entity that provides comprehensive management services ("CMO"), whether for-profit or not-for-profit, which contracts, or may contract, with the charter school or education corporation; or do you serve as an employee, officer, or director of, or own a controlling interest in, a business or entity that contracts, or does business with, or plans to contract or do business with, the charter school, education corporation, and/or a CMO, whether for-profit or not-for-profit, including, but not limited to, the lease of real or personal property to the said entities?

___ Yes _x_ No

If **Yes**, please provide a description of the position(s) you hold, your responsibilities, your salary and your start date.

7. Identify each interest/transaction (and provide the requested information) that you or any of your immediate family members or any persons who live with you in your house have held or engaged in with the charter school(s) operated by the education corporation during the time you have served on the Board, and in the six-month period prior to such service. If there has been no such interest or transaction, write **None**. Please note that if you answered **Yes** to Questions 2-3 above, you need not disclose again your employment status, salary, etc.

Date(s)	Nature of financial interest/transaction	Steps taken to avoid a conflict of interest, (e.g., did not vote, did not participate in discussion)	Name of person holding interest or engaging in transaction and relationship to you

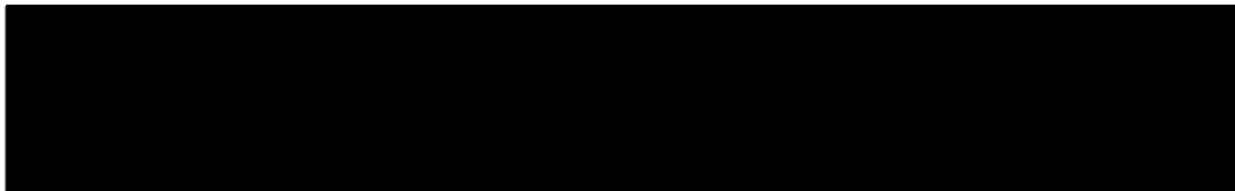
8. Identify each individual, business, corporation, union association, firm, partnership, franchise holding company, joint-stock company, business or real estate trust, non-profit organization, or other organization or group of people doing business with the school(s) operated by the education corporation **and** in which such entity, during the time of your tenure as a trustee, you and/or your immediate family member(s) or person(s) living in your house had a financial interest or other relationship. If you are a member, director, officer or employee of an organization formally partnered with the school(s) that is/are doing business with the school(s) through a management or services agreement, please identify only the name of the organization, your position in the organization, and the relationship between such organization and the school(s). If there was no financial interest, write "**None.**"

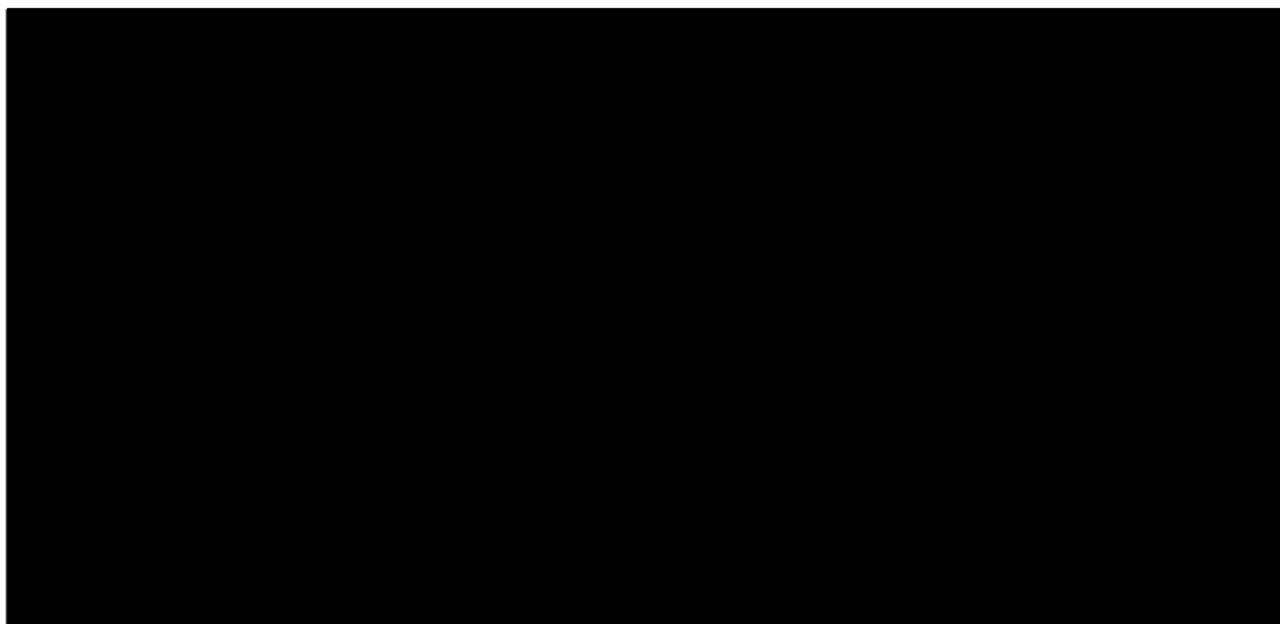
Organization conducting business with the school(s)	Nature of business conducted	Approximate value of the business conducted	Name of Trustee and/or immediate family member of household holding an interest in the organization conducting business with the school(s) and the nature of the interest	Steps taken to avoid conflict of interest

Maya L Crane
Signature

8/3/2020
Date

Please note that this document is considered a public record and, as such, may be made available to members of the public upon request under the Freedom of Information Law. Personal contact information provided below will be redacted.





Disclosure of Financial Interest by a Current or Proposed Board of Trustees Member

Name:

SAM PITTS

Name of Charter School Education Corporation (the Charter School Name, if the charter school is the only school operated by the education corporation):

Exploration Elementary Charter School

1. List all positions held on the education corporation Board of Trustees ("Board") (e.g. president, treasurer, parent representative).

Board Member

2. Are you an employee of any school operated by the education corporation?
 Yes X No

If **Yes**, for each school, please provide a description of the position(s) you hold, your responsibilities, your salary and your start date.

3. Are you related, by blood or marriage, to any person employed by the school? No

If **Yes**, please describe the nature of your relationship and how this person could benefit from your participation.

~~No~~

N/A

4. Are you related, by blood, marriage, or legal adoption/guardianship, to any student currently enrolled in the school? No

If **Yes**, please describe the nature of your relationship and how this person could benefit from your participation.

N/A

5. Are you related, by blood or marriage, to any person that could otherwise benefit from your participation as a board member of this school?

No

If Yes, please describe the nature of your relationship and how this person could benefit from your participation.

N/A

6. Are you a past, current, or prospective employee of the charter school, education corporation, and/or an entity that provides comprehensive management services ("CMO"), whether for-profit or not-for-profit, which contracts, or may contract, with the charter school or education corporation; or do you serve as an employee, officer, or director of, or own a controlling interest in, a business or entity that contracts, or does business with, or plans to contract or do business with, the charter school, education corporation, and/or a CMO, whether for-profit or not-for-profit, including, but not limited to, the lease of real or personal property to the said entities?

___ Yes X No

If **Yes**, please provide a description of the position(s) you hold, your responsibilities, your salary and your start date.

N/A

7. Identify each interest/transaction (and provide the requested information) that you or any of your immediate family members or any persons who live with you in your house have held or engaged in with the charter school(s) operated by the education corporation during the time you have served on the Board, and in the six-month period prior to such service. If there has been no such interest or transaction, write **None**. Please note that if you answered **Yes** to Questions 2-3 above, you need not disclose again your employment status, salary, etc.

Date(s)	Nature of financial interest/transaction	Steps taken to avoid a conflict of interest, (e.g., did not vote, did not participate in discussion)	Name of person holding interest or engaging in transaction and relationship to you
Please write "None" if applicable. Do not leave this space blank. None			

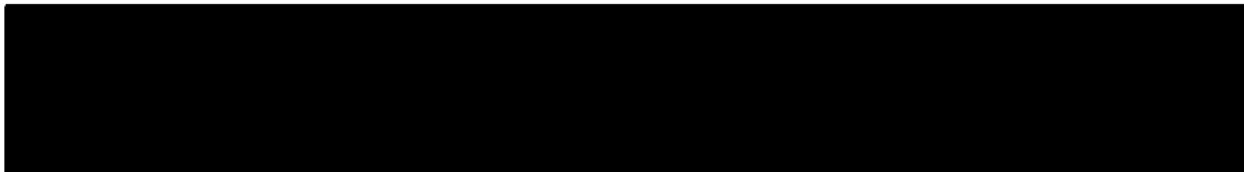
8. Identify each individual, business, corporation, union association, firm, partnership, franchise holding company, joint-stock company, business or real estate trust, non-profit organization, or other organization or group of people doing business with the school(s) operated by the education corporation **and** in which such entity, during the time of your tenure as a trustee, you and/or your immediate family member(s) or person(s) living in your house had a financial interest or other relationship. If you are a member, director, officer or employee of an organization formally partnered with the school(s) that is/are doing business with the school(s) through a management or services agreement, please identify only the name of the organization, your position in the organization, and the relationship between such organization and the school(s). If there was no financial interest, write "**None**."

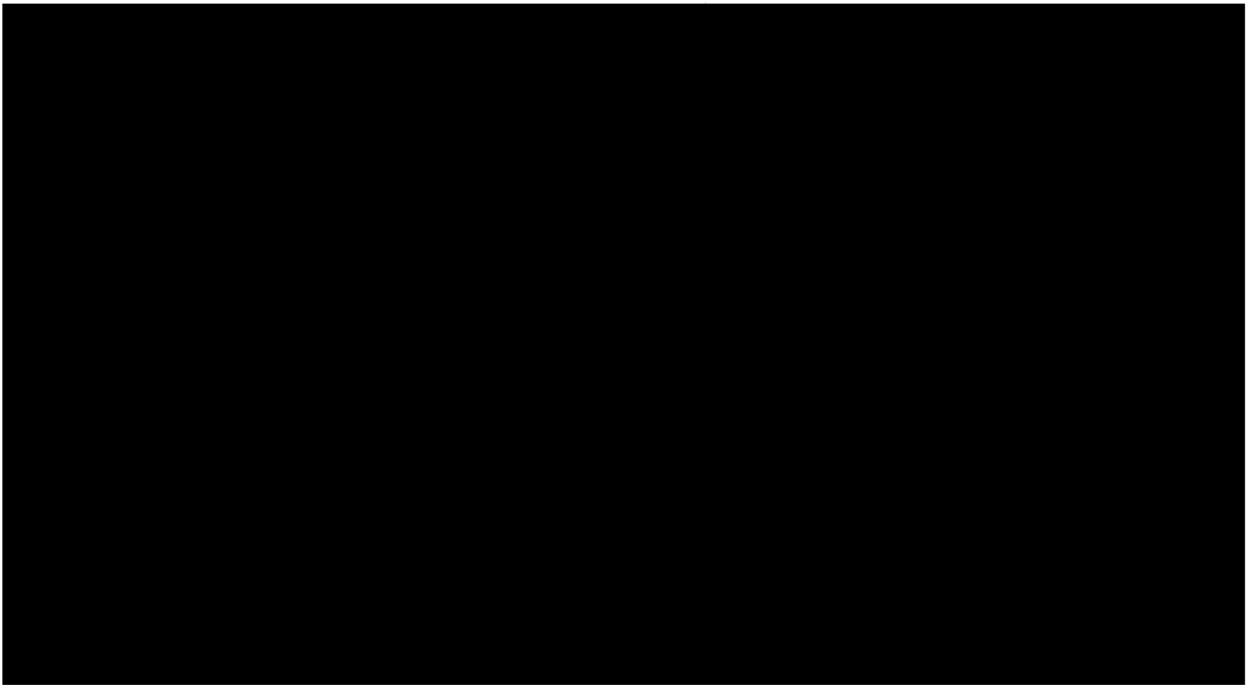
Organization conducting business with the school(s)	Nature of business conducted	Approximate value of the business conducted	Name of Trustee and/or immediate family member of household holding an interest in the organization conducting business with the school(s) and the nature of the interest	Steps taken to avoid conflict of interest
<i>Please write "None" if applicable. Do not leave this space blank.</i>				
None				


Signature

8/31/2020
Date

Please note that this document is considered a public record and, as such, may be made available to members of the public upon request under the Freedom of Information Law. Personal contact information provided below will be redacted.





Disclosure of Financial Interest by a Current or Proposed Charter School Education Corporation Trustee

Trustee Name:

_____Kimberly LoMaglio_____

Name of Charter School Education Corporation (for an unmerged school, this is the Charter School Name):

Exploration Elementary Charter School for Science & Technology

1. List all positions held on the education corporation board (e.g., president, treasurer, parent representative).
 - a. Board Secretary
 - b. Finance Committee Participant

2. Is the trustee an employee of any school operated by the Education Corporation?
_____Yes _X_ No

If **Yes**, for each school, please provide a description of the position(s) you hold, your responsibilities, your salary and your start date.

3. Is the trustee an employee or agent of the management company or institutional partner of the charter school(s) governed by the Education Corporation?
_____Yes _X_ No

If **Yes**, for each school, please provide a description of the position(s) you hold, your responsibilities, your salary and your start date.

4. Identify each interest/transaction (and provide the requested information) that you or any of your immediate family members or any persons who live with you in your house have held or engaged in with the charter school(s) governed by the Education Corporation during the time you have served on the board, and in the six-month period prior to such service. If there has been no such financial interest or transaction, write **None**. Please note that if you answered **Yes** to Questions 2-4 above, you need not disclose again your employment status, salary, etc.

Date(s)	Nature of Financial Interest/Transaction	Steps taken to avoid a conflict of interest, (e.g., did not vote, did not participate in	Name of person holding interest or engaging in transaction and
---------	--	--	--

		discussion)	relationship to yourself
None			

5. Identify each individual, business, corporation, union association, firm, partnership, committee proprietorship, franchise holding company, joint stock company, business or real estate trust, non-profit organization, or other organization or group of people doing business with the school(s) governed by the Education Corporation **and** in which such entity, during the time of your tenure as a trustee, you and/or your immediate family member(s) or person(s) living in your house had a financial interest or other relationship. If you are a member, director, officer or employee of an organization formally partnered with the school(s) that is/are doing business with the school(s) through a management or services agreement, please identify only the name of the organization, your position in the organization, and the relationship between such organization and the school(s). If there was no financial interest, write **None**.

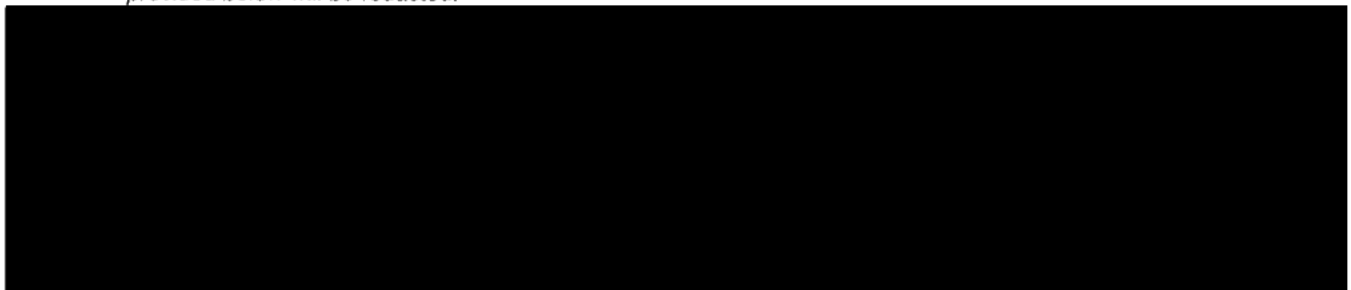
Organization conducting business with the school(s)	Nature of business conducted	Approximate value of the business conducted	Name of Trustee and/or immediate family member of household holding an interest in the organization conducting business with the school(s) and the nature of the interest	Steps Taken to Avoid Conflict of Interest
Paychex Inc.	Payroll Services		Kimberly LoMaglio (self) – employee of Paychex Inc.	I recuse myself from conversations and votes surrounding this service.

Kimberly LoMaglio
 Signature

8/3/20

Date

Please note that this document is considered a public record and as such, may be made available to members of the public upon request under the Freedom of Information Law. Personal contact information provided below will be redacted.





Disclosure of Financial Interest by a Current or Proposed Board of Trustees Member

Name:

Samantha S. Colson

Name of Charter School Education Corporation (the Charter School Name, if the charter school is the only school operated by the education corporation):

Exploration Elementary Charter School for Science and Technology

1. List all positions held on the education corporation Board of Trustees ("Board") (e.g. president, treasurer, parent representative). Member

2. Are you an employee of any school operated by the education corporation?
____ **Yes** X ____ **No**

If **Yes**, for each school, please provide a description of the position(s) you hold, your responsibilities, your salary and your start date.

3. Are you related, by blood or marriage, to any person employed by the school?
No

If **Yes**, please describe the nature of your relationship and how this person could benefit from your participation.

4. Are you related, by blood, marriage, or legal adoption/guardianship, to any student currently enrolled in the school? No

If **Yes**, please describe the nature of your relationship and how this person could benefit from your participation.

5. Are you related, by blood or marriage, to any person that could otherwise benefit from your participation as a board member of this school? No

If Yes, please describe the nature of your relationship and how this person could benefit from your participation.

6. Are you a past, current, or prospective employee of the charter school, education corporation, and/or an entity that provides comprehensive management services ("CMO"), whether for-profit or not-for-profit, which contracts, or may contract, with the charter school or education corporation; or do you serve as an employee, officer, or director of, or own a controlling interest in, a business or entity that contracts, or does business with, or plans to contract or do business with, the charter school, education corporation, and/or a CMO, whether for-profit or not-for-profit, including, but not limited to, the lease of real or personal property to the said entities?

___ Yes X ___ No

If **Yes**, please provide a description of the position(s) you hold, your responsibilities, your salary and your start date.

7. Identify each interest/transaction (and provide the requested information) that you or any of your immediate family members or any persons who live with you in your house have held or engaged in with the charter school(s) operated by the education corporation during the time you have served on the Board, and in the six-month period prior to such service. If there has been no such interest or transaction, write **None**. Please note that if you answered **Yes** to Questions 2-3 above, you need not disclose again your employment status, salary, etc.

Date(s)	Nature of financial interest/transaction	Steps taken to avoid a conflict of interest, (e.g., did not vote, did not participate in discussion)	Name of person holding interest or engaging in transaction and relationship to you
NONE	NONE	NONE	NONE

8. Identify each individual, business, corporation, union association, firm, partnership, franchise holding company, joint-stock company, business or real estate trust, non-profit organization, or other organization or group of people doing business with the school(s) operated by the education corporation and in which such entity, during the time of your tenure as a trustee, you and/or your immediate family member(s) or person(s) living in your house had a financial interest or other relationship. If you are a member, director, officer or employee of an organization formally partnered with the school(s) that is/are doing business with the school(s) through a management or services agreement, please identify only the name of the organization, your position in the organization, and the relationship between such organization and the school(s). If there was no financial interest, write "**None**."

Organization conducting business with the school(s)	Nature of business conducted	Approximate value of the business conducted	Name of Trustee and/or immediate family member of household holding an interest in the organization conducting business with the school(s) and the nature of the interest	Steps taken to avoid conflict of interest
NONE	NONE	NONE	NONE	NONE

Samantha S. Colson

08/02/2020

Signature

Date

Please note that this document is considered a public record and, as such, may be made available to members of the public upon request under the Freedom of Information Law. Personal contact information provided below will be redacted.



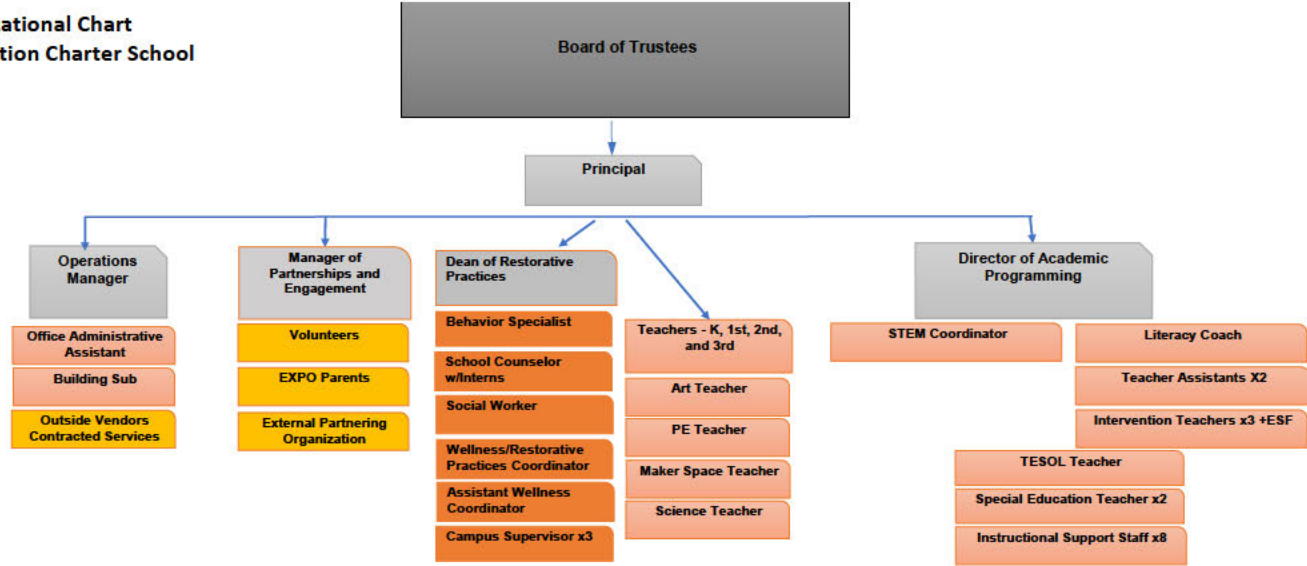


last revised 06/8/2020

All board meeting mins can be found on our website (explorationrochester.org) or by clicking the link below:

<https://www.explorationrochester.org/trustees>

Organizational Chart
Exploration Charter School



Exploration Elementary Charter School | 2020-2021 Calendar

School Hours: 9:00am - 4:00pm
Friday (half day dismissal): 9:00am - 12:30pm

4 Independence Day

JULY 2020						
S	M	T	W	Th	F	S
			1	2	3	4
5	6	7	8	9	10	11
12	13	14	15	16	17	18
19	20	21	22	23	24	25
26	27	28	29	30	31	
						0

1 Winter Recess
18 M.L. King Day
29 End of Marking Period 2

JANUARY 2021						
S	M	T	W	Th	F	S
					1	2
3	4	5	6	7	8	9
10	11	12	13	14	15	16
17	18	19	20	21	22	23
24	25	26	27	28	29	30
31						19

21-31 Staff PD

AUGUST 2020						
S	M	T	W	Th	F	S
						1
2	3	4	5	6	7	8
9	10	11	12	13	14	15
16	17	18	19	20	21	22
23	24	25	26	27	28	29
30	31					0

15-19 Mid-winter Recess
25 Family Night

FEBRUARY 2021						
S	M	T	W	Th	F	S
	1	2	3	4	5	6
7	8	9	10	11	12	13
14	15	16	17	18	19	20
21	22	23	24	25	26	27
28						
						15

1-2 Staff PD
3 Meet & Greet
(9:00-11:00 a.m.-5:00-7:00 p.m.)
4-8 Labor Day
9 First day of school
17 Open House
(6:00-7:30pm)

SEPTEMBER 2020						
S	M	T	W	Th	F	S
		1	2	3	4	5
6	7	8	9	10	11	12
13	14	15	16	17	18	19
20	21	22	23	24	25	26
27	28	29	30			
						16

4 Parent-Teacher Conferences
5 Parent-Teacher Conferences
25 Family Night
29-31 Spring Recess

MARCH 2021						
S	M	T	W	Th	F	S
	1	2	3	4	5	6
7	8	9	10	11	12	13
14	15	16	17	18	19	20
21	22	23	24	25	26	27
28	29	30	31			
						20

8 District Half-day
9 District Day
12 Columbus Day
29 Family Night

OCTOBER 2020						
S	M	T	W	Th	F	S
				1	2	3
4	5	6	7	8	9	10
11	12	13	14	15	16	17
18	19	20	21	22	23	24
25	26	27	28	29	30	31
						20

1-2 Spring Recess
16 End of Marking Period 3
20-22 NYS ELA Testing
30 District Day
(Parent-Teacher Conferences)

APRIL 2021						
S	M	T	W	Th	F	S
				1	2	3
4	5	6	7	8	9	10
11	12	13	14	15	16	17
18	19	20	21	22	23	24
25	26	27	28	29	30	
						19

3 District Day
6 End of Marking Period 1
11 Veterans' Day
12 Parent-Teacher Conferences
13 Parent-Teacher Conferences
25-27 Thanksgiving Recess

NOVEMBER 2020						
S	M	T	W	Th	F	S
1	2	3	4	5	6	7
8	9	10	11	12	13	14
15	16	17	18	19	20	21
22	23	24	25	26	27	28
29	30					
						16

4-6 NYS Mathematics Testing
27 Family Night
31 Memorial Day

MAY 2021						
S	M	T	W	Th	F	S
						1
2	3	4	5	6	7	8
9	10	11	12	13	14	15
16	17	18	19	20	21	22
23	24	25	26	27	28	29
30	31					20

24-31 Winter Recess

DECEMBER 2020						
S	M	T	W	Th	F	S
		1	2	3	4	5
6	7	8	9	10	11	12
13	14	15	16	17	18	19
20	21	22	23	24	25	26
27	28	29	30	31		
						17

1-3 NYS Science Performance Test
7 NYS Science Written Test
18 End of Marking Period 4
25 Last day for students
(1/2-day, early dismissal)
30 Last day for staff

JUNE 2021						
S	M	T	W	Th	F	S
		1	2	3	4	5
6	7	8	9	10	11	12
13	14	15	16	17	18	19
20	21	22	23	24	25	26
27	28	29	30			
						19

Key:
 Holiday- No School for Staff & Students
 District Day- No School for Students
 NYS Assessment Day
 Early Dismissal Day -12:30 Dismissal
 Last Day of school for students -12:30 Dismissal

Teacher Days= 197 (including District Days) Student Days= 181

Exploration Elementary Charter School | 2020-2021 Calendar

School Hours: 9:00am - 4:00pm

Friday (half day dismissal): 9:00am - 12:30pm

General Information and Fire/Life Safety History

Inspection Date:

7/8/20

1. Primary Use:

INSTRUCTIONAL

2. Fire Sprinkler System?

No

2a. Sprinkler alarm?

No

3. Fire Hydrant System?

Yes

3a. Hydrant Ownership:

Public owned

4. Building Ownership:

Leased

4a. Owner Name:

Education Success Foundation

4a. Owner Address:

4 Lakeview Park

4a. Owner Address2:

Rochester NY 14613

4a. Owner Phone #:

(585) 498-4700

5. Leased To Others?:

Yes

5a. Tenant Name:

Academy Health Sciences

5a. Tenant Address:

1001 Lake Ave

5a. Tenant Address2:

Rochester NY 14613

5a. Tenant Phone #:

(585) 498-4700

6. Square footage:**8a. Fire drill manuals distributed?**

Yes

8f. Average evacuation time:

5 minutes 30 seconds

8g. Arson/Fire Prevention?

Yes

8h. Prevention/Evacuation Training?

Yes

9. Fire Dept. notified via alarm?

Yes

10. Any Fires?

No

10a. Number of fires:

0

10b. Number of injuries:

0

10c. Cost of Damage:

0

Inspector Notified of previous fire report?

Yes

FIRE & EMERGENCY DRILLS

	Date	Type
1	Sep 13, 2019	Evacuation
2	Oct 10, 2019	Lockdown
3	Nov 4, 2019	Evacuation
4	Nov 18, 2019	Evacuation
5	Nov 25, 2019	Evacuation
6	Nov 26, 2019	Evacuation
7	Dec 11, 2019	Lockdown

	Date	Type
8	Jan 22, 2020	Lockdown
9	Feb 13, 2020	Evacuation
10	Feb 26, 2020	Lockdown
11		
12	Oct 4, 2019	Evacuation

EMERGENCY EVACUATION DRILLS

	Date
1	Oct 4, 2019
2	Nov 4, 2019
3	Nov 18, 2019
4	Nov 25, 2019
5	Nov 26, 2019
6	Feb 13, 2020
7	
8	
9	
10	
11	
12	Sep 13, 2019

Insufficient Fire & Emergency Drills Reason

- Unable to complete the 8th evacuation date due to COVID-19

Insufficient Emergency Evacuation Drills Reason

- Unable to complete the 8th evacuation date due to COVID-19

Initial Inspector

Brian Anten

Phone #: (Phone Number) [REDACTED]

Certification #: (Certification Number) [REDACTED]

Email: brian.anten@cityofrochester.gov

Building Administrator

Rachelle Simmons

Phone #: (Phone Number) [REDACTED]

Building Overview

ID:**District Location:**

EXPLORATION ELE CS - SCIENCE-TECHNOL

Building Type:

INSTRUCTIONAL

Name & Address:NAZARETH ACADEMY BUILDING
1001 LAKE AVENUE
ROCHESTER, NY 14613**Inspection History**

Date Created:

Aug 3, 2020

Created By:

rachele.simmons

Date Modified:

Aug 3, 2020

Modified By:

rachele.simmons

Date Certified:

Aug 3, 2020

Certified By:

rachele.simmons

Certificate History

Certificate Type**Certificate of Occupancy****Date Certified**

Aug 3, 2020

Certified By

rachele.simmons

Non-conformances

Item	Date Corrected	Date Reinspected
12D-2	Jul 8, 2020	Jul 8, 2020



CERTIFICATE OF OCCUPANCY

VALID FOR FACILITY:

NAZARETH ACADEMY BUILDING
1001 LAKE AVENUE
ROCHESTER, NEW YORK 14613

DISTRICT:

EXPLORATION ELE CS - SCIENCE-TECHNOL
RACHELLE SIMMONS
1001 LAKE AVE
ROCHESTER, NEW YORK 14613

Building ID: 261600918001

Issuance Date: August 03, 2020

Effective Date: August 01, 2020

Expiration Date: August 01, 2021

OBTAIN FIRE SAFETY REPORT FROM DISTRICT OFFICE

THIS CERTIFICATE VOIDS ANY PREVIOUSLY ISSUED