



Civil Rights for Newcomers and Immigrants

Office of Bilingual Education and World Languages
http://www.nysed.gov/bilingual_ed



Office of Bilingual Education and World Languages
89 Washington Avenue, EB 301
Albany, NY 12234



Newcomers and Immigrants





Key Terms



Newcomer
English Language
Learners (ELLs)



Students with
Interrupted/Inconsistent
Formal Education (SIFE)



Unaccompanied
Youth



Migratory Child





Key Terms



Newcomer
English
Language
Learners (ELLs)

Students who:

- Have been in our schools for 3 years or less
- Are ELLs
- May be elementary or secondary students
- May have temporary protected status



Click for
Resource Link



Key Terms



Students with Interrupted/Inconsistent Formal Education (SIFE)

Students who:

- Are ELLs who have attended schools in the US for less than 12 months
- Are 2+ years below grade level in home language literacy and/or math as scored on the Multilingual Literacy SIFE Screener (MLS)
- Have inconsistent/interrupted schooling



Click for Resource Link





Key Terms

Students who:

- May not have parent/formal guardians
- May have a sponsor with/without legal custody



Unaccompanied
Youth





Key Terms

Students who:

- Have parents/guardians who are migrant workers
- May move across the country in search of seasonal/temporary work
- May experience social/cultural isolation, poor health, and poverty
- May have lower academic achievement as a result of constant mobility



Migratory
Child





Resources Newcomers and Immigrants

Students in need of:

- Trauma-sensitive strategies
- Social Emotional Learning (SEL) and Adverse Childhood Experiences (ACEs) support
- Mental health counseling



**SOCIAL EMOTIONAL LEARNING: A
GUIDE TO SYSTEMIC WHOLE SCHOOL
IMPLEMENTATION**



A GUIDE TO SYSTEMIC WHOLE SCHOOL IMPLEMENTATION



**Trauma-Sensitive Strategies
for School Success**





Laws and Funding McKinney-Vento Act & Title I Part A

Students in need of:

- Temporary housing
- Immediate enrollment
- Free school meals
- School supplies
- Clothes & eyeglasses
- Counseling



NYSTEACHS.org



**The New York State Technical and Educational
Assistance Center for Homeless Students**

McKinney-Vento Homeless Education





Laws and Funding Title I Part C Migrant Education

Students entitled to:

- Support for educational inconsistencies
- Support for their parents as partners in their education
- Additional academic support
- Educational supplies and transportation
- Counseling





Laws and Funding Title III Part A ELL and Immigrant

Students entitled to:

- Supplemental language supports
- Additional student/family supports beyond the school day
- Family literacy and supports



Title III Compliance and Reporting

2022-2023 Title III Application Information



2022-2023 LEA Application for ESSA-Funded Programs

NYSED has developed the 2022-23 LEA Application for ESSA-Funded Programs to support the timely administration of federal funds to LEAs across the state. Consistent with the USDE requirements, the new online application will replace the traditional Consolidated Application.





Laws and Funding Special Education CR Part 200

Students in need of:

- Special Education Services
- Surrogate parent
- Rights advocate





Guidance for Leaders on Newcomers and Immigrants



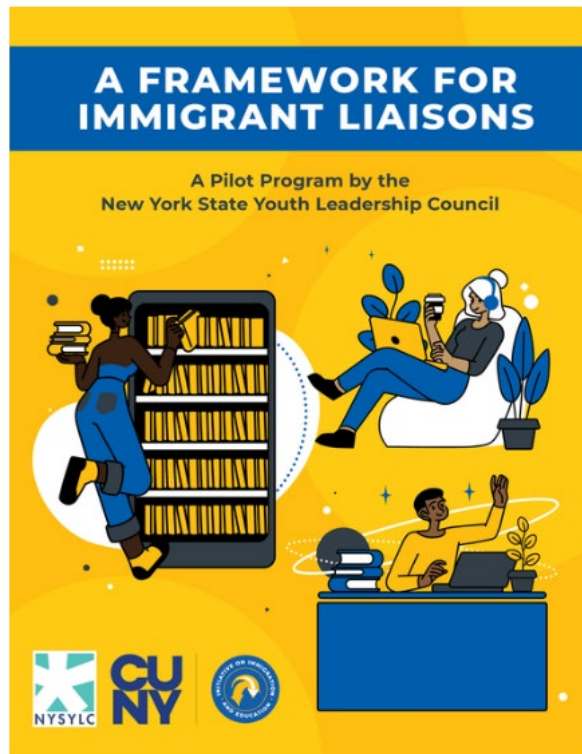
- Home Language Questionnaire (HLQ)
- Interview
- NYSITELL
- Placement – 10 days

CR Part 154 for
English Language Learners (ELLs)





Guidance for Leaders on Newcomers and Immigrants



- Support for immigrants (especially undocumented)
- Understand intersections of immigration and education
- Actions taken in schools to create a more welcoming environment
- Connect to initiatives such as culturally responsive and Diversity, Equity, and Inclusion (DEI) efforts

CUNY IIE Framework for Immigrant Liaisons





Best Practices

This population of students must be handled with care. Consider how you respond to students and families with potential:

- Adverse Childhood Experiences (ACEs)
- Culture shock from a recent relocation
- Trauma from relocation or as a result of the reasons that drove the family away from their home
- Language struggle
- Medical and mental health needs





Students without Records



Placement Tests



Interviews



Unofficial
Records





Need more support? Questions?

The guides are organized by the New York State region:

[Capital Region CBO Guide](#) 

[Hudson Valley CBO Guide](#) 

[Long Island CBO Guide](#) 

[Mid-state CBO Guide](#) 

[Mid-west CBO Guide](#) 

[New York City CBO Guide](#) 

[Western Region CBO Guide](#) 



U.S. Citizenship
and Immigration
Services

<https://www.uscis.gov/>



<http://www.nysed.gov/bilingual-ed/guide-community-based-organizations-immigrants>





Need more support? Questions?

Office of Bilingual Education and World Languages (OBEWL)

Our mission is to ensure that all New York State English Language Learners (ELLs) attain the highest level of academic success and that all Multilingual Learners (MLs) – which include ELLs, Former/Ever ELLs, World Languages students, and heritage speakers of World Languages – achieve the highest level of language proficiency in English and in one or more other languages. Our Vision is to provide leadership that embraces linguistically diverse learners to establish a Multilingual Society.

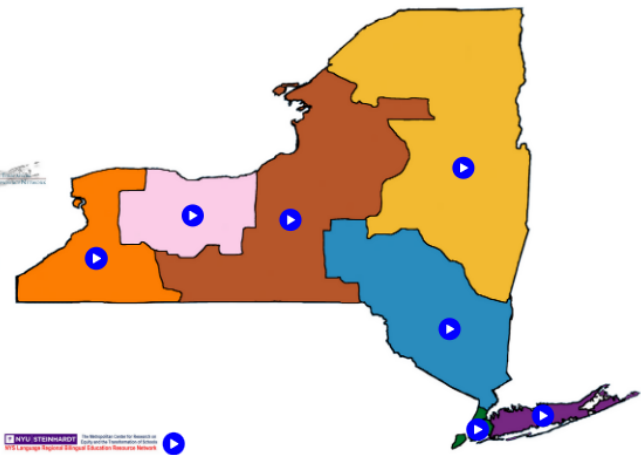



OBEWL at NYSED



NYS RBERN REGIONS

- CAPITAL DISTRICT AT QUESTAR III BOCES 
- HUDSON VALLEY AT SW BOCES 
- LONG ISLAND AT EASTERN SUFFOLK BOCES 
- MID-STATE AT OCM BOCES 
- MIDWEST AT MONROE 2 ORLEANS BOCES 
- NYC AT FORDHAM UNIVERSITY 
- WEST AT ERIE 1 BOCES 
- ALL COLORS: STATEWIDE LANGUAGE RBERN AT NYU 



Regional Bilingual Education Resource Network (RBERN)





Elisa Alvarez, Associate Commissioner
OFFICE OF BILINGUAL EDUCATION AND WORLD LANGUAGES

<http://www.p12.nysed.gov/biling/bilinged/>

OBEWL@NYSED.GOV

ELL Parent Hotline at 1-800-469-8224

nysparenthotline@nyu.edu

REGIONAL BILINGUAL EDUCATION RESOURCE NETWORKS

<http://www.nysed.gov/bilingual-ed/regional-supportrberns>





THANK YOU!

