

MID-WEST REGIONAL BILINGUAL EDUCATION RESOURCE NETWORK

Hi!

嗨

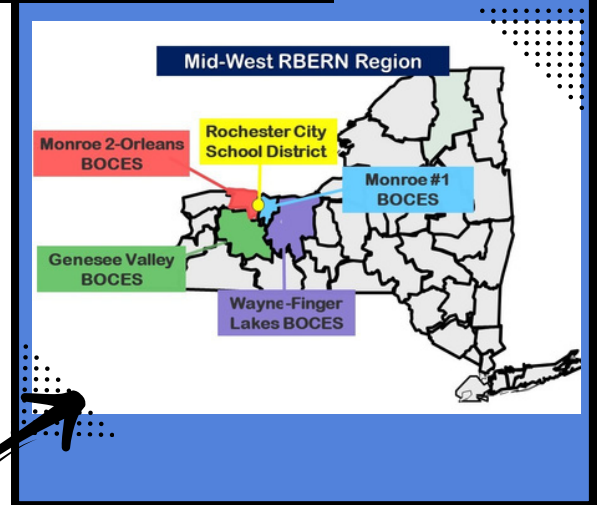
Hola!



Our Goal:

The purpose of Mid-West RBERN is to build capacity within school communities to cultivate strong leaders, high quality, meaningful instruction, and welcoming, inclusive environments for Multilingual Learners (MLLs). We are committed to developing partnerships that result in equitable educational outcomes for MLLs by capitalizing on the backgrounds, cultures, and strengths of diverse students and educators.

Our Region:

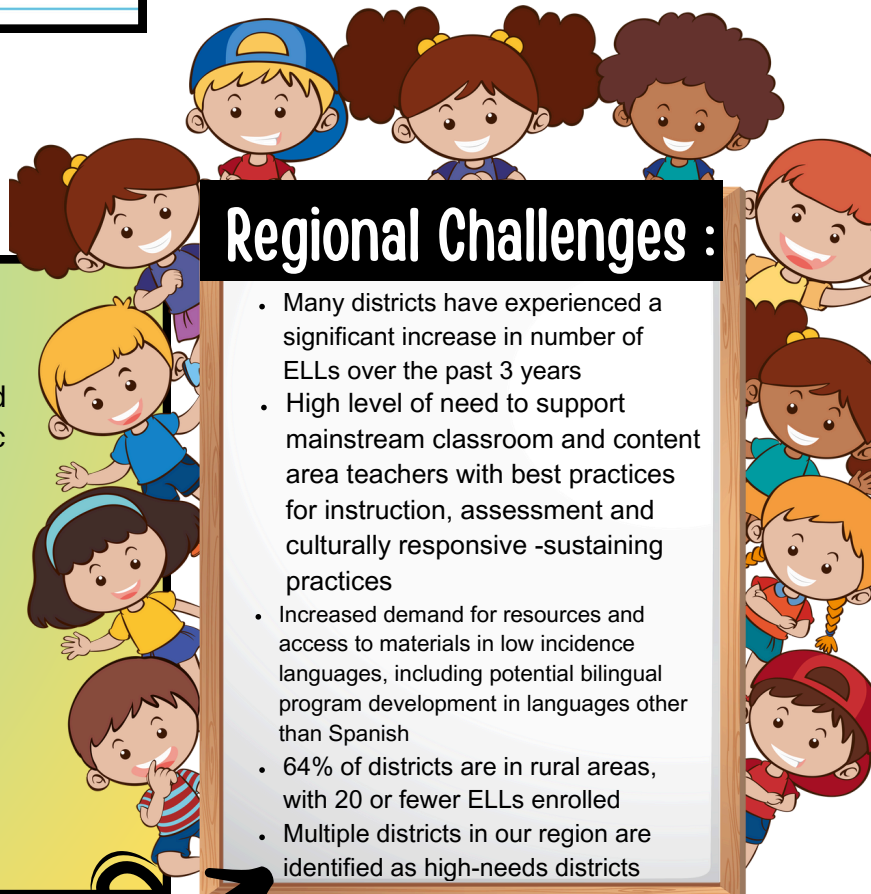


Our Services:

- Development and delivery of professional development on high quality instruction and assessment practices that support academic achievement for ELL/MLs
- Technical assistance on the design, implementation, and enhancement of educational programs for ELL/MLs
- Technical assistance and workshops on state and federal laws, regulations, and policies
- Support network for resources and collaboration for the education of ELL/MLs

Regional Challenges :

- Many districts have experienced a significant increase in number of ELLs over the past 3 years
- High level of need to support mainstream classroom and content area teachers with best practices for instruction, assessment and culturally responsive -sustaining practices
- Increased demand for resources and access to materials in low incidence languages, including potential bilingual program development in languages other than Spanish
- 64% of districts are in rural areas, with 20 or fewer ELLs enrolled
- Multiple districts in our region are identified as high-needs districts



Contact Us

Staff Member



Nicole Bell

Coordinator/Director

✉ nbell@monroe2boces.org

☎ (585) 352-2791



Jennifer Raponi

Professional Development Specialist

✉ jraponi@monroe2boces.org

☎ (585) 352-2757



Anna Stukes

Professional Development Specialist

✉ astukes@monroe2boces.org

☎ (585) 352-2797



Cori Smith

Professional Development Specialist

✉ csmith@monroe2boces.org

☎ (585) 352-2671



Chris Bethmann

Professional Development Specialist

✉ cbethman@monroe2boces.org

☎ (585) 352-2711

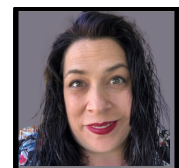


Jodi Hyland-Haak

Professional Development Specialist

✉ jhyland@monroe2boces.org

☎ (585) 352-2797



Gia Callari

Department Support Specialist

✉ gcallari@monroe2boces.org

☎ (585) 352-2790

Area of Expertise

- Parent/Family Engagement
- Migrant Education
- Elementary ENL Instruction & Arts Integration
- Students with Interrupted Formal Education (SIFE)
- Literacy for ELLs
- Early Childhood ENL Education & Preschool Initiatives
- Puerto Rican Hispanic Youth Leadership Institute (PRHYLI)
- NYS Seal of Biliteracy
- Spanish Language Arts Education
- ENL Instruction & Career and Technical Education (CTE)
- CR-SE
- Co-Teaching
- Secondary ENL Instruction
- Coaching
- NYSITELL/NYSESLAT
- Special Education
- Migrant Education
- Parent/Family Engagement
- Administrative Support
- Financial and Technical Assistance
- Travel and Conference Facilitation



Mid-West RBERN

Monroe 2- Orleans BOCES
3599 Big Ridge Road
Spencerport, NY 14559

✉ midwestrbern@monroe2boces.org

☎ (585) 352-2790

🌐 www.monroe2boces.org/rbern



The Regional Bilingual Education Resource Network (RBERN) is supported by the New York State Education Department, Office of Bilingual Education and World Languages (OBEWL). For more information, please visit www.nysed.gov/bilingual-ed/regional-supportrbens