

# Mid-West Regional Bilingual Education Resource Network (RBERN)



## **Our Goal:**

The purpose of Mid-West RBERN is to build capacity within school communities to cultivate strong leaders, high quality, meaningful instruction, and welcoming, inclusive environments for Multilingual Learners (MLLs). We are committed to developing partnerships that result in equitable educational outcomes for MLLs by capitalizing on the backgrounds, cultures, and strengths of diverse students and educators.

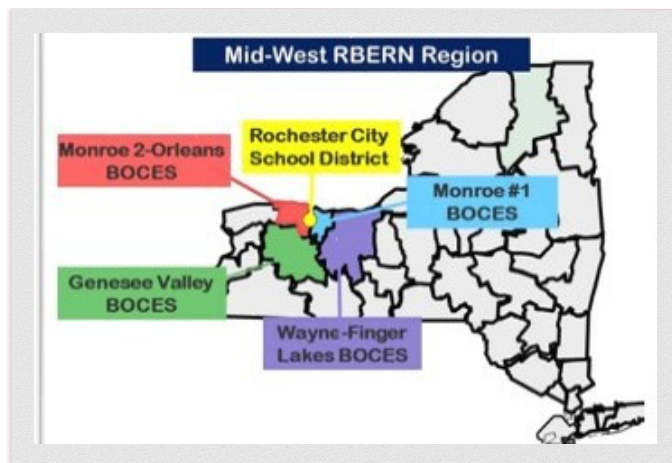
## **Our Services:**

- Development and delivery of professional development on high quality instruction and assessment practices that support academic achievement for ELL/MLLs
- Technical assistance on the design, implementation and enhancement of educational programs for ELL/MLLs
- Technical assistance and workshops on state and federal laws, regulations, and policies
- Support Network for Resources and Collaboration for the education of ELL/MLLs

## **Our Region:**

Mid-West RBERN supports schools and districts located in the following regions:

Monroe #1 BOCES  
Monroe 2-Orleans BOCES  
Genesee Valley BOCES  
Wayne-Finger Lakes BOCES  
Rochester City School District



The ELLs in our region speak **99 different languages**.

The top five languages in our region are **Spanish, Arabic, Nepali, Somali, and Chinese**.

## **Regional Challenges:**

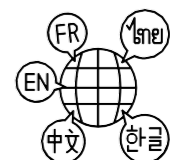
Many districts in our region have experienced a significant increase in numbers of ELLs over the past three years.

There is high level of need to support mainstream classroom and content area teachers with best practices for instruction, assessment and culturally responsive-sustaining practices.

There is an increased demand for resources and access to materials in low incidence languages, including potential bilingual program development in languages other than Spanish.

In our region, 64% of districts are in rural areas, with 20 or fewer ELLs enrolled

Multiple districts in our region are identified as high-needs districts



## Contact Mid-West RBERN

### Staff Member:

### Area of Expertise:

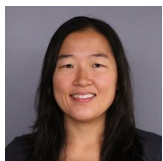
**Dr. Sabrina Nudo**

Coordinator

[snudo@monroe2boces.org](mailto:snudo@monroe2boces.org)

(585) 352-2791

World Language  
Bilingual Education  
Program Evaluation

**Nicole Bell**

Professional Development Specialist

[nbell@monroe2boces.org](mailto:nbell@monroe2boces.org)

(585) 352-2711

Parent & Family Engagement  
Migrant Education  
Elementary ENL Instruction & Arts  
Integration

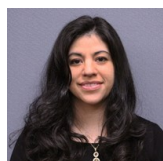
**Jennifer Raponi**

Professional Development Specialist

[jraponi@monroe2boces.org](mailto:jraponi@monroe2boces.org)

(585) 352-2757

Students with Interrupted Formal  
Education (SIFE)  
Literacy for ELLs  
Early Childhood ENL Education &  
Preschool Initiatives

**Anna Stukes**

Professional Development Specialist

[astukes@monroe2boces.org](mailto:astukes@monroe2boces.org)

(585) 352-2797

Puerto Rican Hispanic Youth  
Leadership Institute (PR/HYLI)  
NYS Seal of Biliteracy  
Spanish Language Arts Education

**Cori Smith**

Professional Development Specialist

[csmith@monroe2boces.org](mailto:csmith@monroe2boces.org)

(585) 352-2671

ENL Instruction & Career and  
Technical Education (CTE)  
CR-SE  
Co-Teaching

**Gia Callari**

Department Support

[gcallari@monroe2boces.org](mailto:gcallari@monroe2boces.org)

(585) 352 -2790

Administrative Support  
Financial and Technological  
Assistance  
Travel and Conference Facilitation

**Mid-West RBERN**

Monroe 2-Orleans BOCES

3599 Big Ridge Road

Spencerport, NY 14559

**Email:** [Midwestrbern@monroe2boces.org](mailto:Midwestrbern@monroe2boces.org)

**Phone:** (585) 352-2790

**Fax:** (585) 352-2613

**Website:** [www.monroe2boces.org/rbern](http://www.monroe2boces.org/rbern)

The Regional Bilingual Education Resource Network (RBERN) is supported by the New York State Education Department, Office of Bilingual Education and World Languages (OBEWL).

For more information, please visit:

[www.nysed.gov/bilingual-ed/regional-supportrborns](http://www.nysed.gov/bilingual-ed/regional-supportrborns)