

Understanding the 2025-26 School Year Reporting Data Resources

**2025-26 School Year
Preliminary Determinations**



Data Resource Rollout Timeline



Early Fall 2025
Reimagine Phase
Resources
Published



November 2025
Preliminary
Determinations
Released with Excel
File and Report Guide



**November/
December 2025**
Preliminary
Determinations
Appeal Window



**Mid to Late
January 2026**
Final
Determinations
Released



Early 2026
School Report
Card Published



Spring 2026
Engage in
Improvement
Planning with
Supplemental
Supports

Data Resources Crosswalk

Resource	Excel File and Report Guide	SIRS Reports	School Report Card	Local Data	NYSED Resources
How is this resource useful?	<ul style="list-style-type: none">• Provide accountability indicator level data• Can be used to identify areas of high and borderline needs, as well as areas of strength and growth	<ul style="list-style-type: none">• Allows local education agencies to zoom in on specific subgroups and results by indicator	<ul style="list-style-type: none">• Allows all stakeholders to review publicly available data so they can participate in continuous improvement efforts and decision-making processes	<ul style="list-style-type: none">• Can be used to help identify areas of need and evaluate impacts of programs and curricula	<ul style="list-style-type: none">• Support greater understanding of accountability system, data, and support models• Provide information about supports available to help guide continuous improvement planning

Preliminary Determinations Excel File

Accountability Status Identification and Exit Rules

School Support Models

- All Students group is identified for CSI if it met the Identification Scenario or Graduation Rate Criteria.
- Subgroup is identified for CSI if it was ATSI during 2024–25 SY and did not meet the Exit Criteria.
- Subgroup is identified for ATSI if it was TSI during 2024–25 SY and met ATSI Identification Scenario Criteria.
- Subgroup is identified for PTSI-2 if it was PTSI-1 during 2024–25 SY and met TSI Identification Scenario Criteria.
- Subgroup is identified for PTSI-1 if it was LSI during 2024–25 SY and met TSI Identification Scenario Criteria.
- All Students group identified for CSI and a subgroup identified for ATSI or TSI for ≥ 1 years during the 2024–25 SY may exit if it met the Exit Criteria.
- All Students group and subgroups that are not identified for CSI, ATSI, TSI, PTSI are identified for LSI.
- All Students group identified for CSI based upon 2017–18 SY results that have not exited based on 2024–25 SY results are identified for Receivership.

District Support Models

- A district with at least one school identified for CSI, ATSI, or TSI based on 2024–25 SY results is a Target district.
- A district with no component schools identified for CSI, ATSI, or TSI is identified for LSI.

2025–26 School Year Preliminary Accountability Status Report Guide

School/District Status

CSI	Comprehensive Support and Improvement
ATSI	Additional Targeted Support and Improvement
TSI	Targeted Support and Improvement
LSI	Local Support and Improvement
TD	Target District

Footnotes

#	Based on finding of extenuating or extraordinary circumstances.
*	Determined using a self-assessment process.

• For more information contact accountinfo@nysed.gov.

Subgroup Status

CSI	Comprehensive Support and Improvement
ATSI	Additional Targeted Support and Improvement
TSI	Targeted Support and Improvement
PTSI-2	Local Support and Improvement: Potential TSI (Second Year Identified)
PTSI-1	Local Support and Improvement: Potential TSI (First Year Identified)
LSI	Local Support and Improvement
-	Not accountable for the subgroup

Elementary-Middle Subgroup Accountability Status																	High School Subgroup Accountability Status									
District BEDS	District Name	District/School BEDS Code	District/School Name	2024–25 Accountability Status	2025–26 Accountability Status	Met Criteria for Receivership	All Students	Students with Disabilities	Native American	Asian	Black	Hispanic	White	English Language Learners	Econ. Disadvantaged	Multiracial	All Students	Students with Disabilities	Native American	Asian	Black	Hispanic	White	English Language Learners	Econ. Disadvantaged	Multiracial
	District A		District A	TD	TD		CSI	LSI			TSI	LSI	PTSI-2		PTSI-1	LSI										
	District A		School A	TSI	CSI		LSI	ATSI							LSI											
	District A		School B	TSI	ATSI		LSI	ATSI							LSI											
	District A		School C	CSI	CSI		CSI	CSI			CSI	ATSI	ATSI		ATSI	ATSI										
	District A		School D	CSI	CSI												CSI	PTSI-1			ATSI	PTSI-1		LSI	PTSI-1	
	District A		School E	CSI	CSI												CSI	PTSI-2			PTSI-2	PTSI-1	LSI	PTSI-1	PTSI-1	LSI

<

>

Status Summary

Elementary-Middle

High School

+

Preliminary Determinations Excel File

	A	F	G	H	I	J	K	L
1	Accountability Status Identification and Exit Rules							
2	<ul style="list-style-type: none">• Accountability statuses are determined for schools only. District data are provided for informational purposes.• All Students group is identified for CSI if it met Scenario 1 or 2 (column 10).• Subgroup is identified for CSI if it was ATSI during 2024–25 school year (SY) and did not meet the Exit Criteria (columns 10, 16, and 17).• Subgroup is identified for ATSI if it was TSI during 2024–25 SY and met Scenario 1 or 2 (column 10).• Subgroup is identified for PTSI-2 if it was PTSI-1 during 2024–25 SY and met Scenario 1 or 2 (column 10).• Subgroup is identified for PTSI-1 if it was LSI during 2024–25 SY and met Scenario 1 or 2 (column 10).• All Students group and subgroups that are not identified for CSI, ATSI, TSI, PTSI-2, or PTSI-1 are identified for LSI.• All Students group and subgroups that are identified for CSI, ATSI, or TSI may exit in the second year after initial identification (“2024-25 Years Identified” is ≥ 1) and if they met the Exit Criteria (columns 10, 16, and 17).							
3								
4								
5								
6								
7								
8								
9								
10								
11								
--	2025–26 School Year Preliminary Accountability Status Report Guide							

Preliminary Determinations Excel File

N	O	P	Q	R	S	T
---	---	---	---	---	---	---

Accountability Statuses

CSI	Comprehensive Support and Improvement
ATSI	Additional Targeted Support and Improvement
TSI	Targeted Support and Improvement
PTSI-2	Local Support and Improvement: Potential TSI (Second Year
PTSI-1	Local Support and Improvement: Potential TSI (First Year
LSI	Local Support and Improvement

Footnotes

#	Based on finding of extenuating or extraordinary circumstances.
+	Determined using a self-assessment process.
*	Data were not submitted to the Department.

- For more information contact accountinfo@nysed.gov.

Preliminary Determinations Excel File

	V	W	X	Y	Z	AA	AB	AC	AD	AE	AF	AG	AH	AI	AJ	AK	AL	AM	AN	
1	Identification Scenario Criteria								Exit Criteria											
2	Scenario	Weighted	Core	Grad Rate	ELP	Attendance	CCCR		CSI/ATSI	To exit, the All Students group identified for CSI or any subgroup identified for ATSI must not meet Scenario 1 or 2 in the second year after initial identification ("2024-25 Years Identified" is ≥1) and must meet one of the following conditions based upon 2024-25 SY results: • The 2024–25 SY Weighted Average Achievement Index is higher than at the time of identification (2021–22). • The 2024–25 SY Core Subject Performance Index is higher than at the time of identification (2021–22). • The 2024–25 SY Graduation Rate is higher than at the time of identification (2021–22). For schools identified for CSI due to Graduation Rate based on 2021-22 SY results, the 4 Yr, 5 Yr, or 6 Yr Graduation Rate is ≥ 67%.										
3	1	Level 1	Level 1	Level 1	At Least One Level 1															
4	2	Level 1 or 2	Either Level 1		At Least One Level 1															
5																				
6	Identification Graduation Rate Criteria																			
7	All Students group is identified for CSI if the 4 Yr Graduation Rate is < 67% and the 5 Yr and 6 Yr Graduation Rates are not ≥ 67%.																			
8																				
9																				
10									TSI		To exit, a subgroup must not meet Scenario 1 or 2 in the second year after initial identification ("2024-25 Years Identified" is ≥1).									
									PTSI-1, PTSI-2		To exit, a subgroup must not meet Scenario 1 or 2.									

NYSED School and District Accountability Resources and Data webpage:



<https://www.nysed.gov/accountability/school-and-district-accountability-resources-and-data>

Preliminary Determinations Excel File

4	5	6	7	8	9	10	11	12	13	14	15	16	17
District/School Name	Subgroup	2024-25 Accountability Status	2024-25 Years Identified	2025-26 Accountability Status	2025-26 Years Identified	Identification Criteria						CSI/ATSI Exit Criteria	
						Identification Scenario Criteria	Weighted Avg. Ach. Level	Core Subject Perf. Index Level	Growth Level	English Language Proficiency Level	Attendance Level	Condition 1: Did Not Meet Identification Scenario Criteria	Condition 2: Made Absolute Improvement
District A	All Students												
District A	ELL												
District A	ED												
District A	Multiracial												
District A	SWD												
District A	Asian												
District A	Black												
District A	Hispanic												
District A	White												
School A	All Students	LSI		CSI	0	1	1	1	1		2		
School A	ED	LSI		PTSI-1		2	2	1	1		2		
School A	Multiracial	LSI		LSI			2	1			2		
School A	SWD	LSI		LSI			2	2	1		3		
School A	Black	TSI	0	TSI	1		1	1			2		
School A	Hispanic	LSI		LSI			2	1			2		
School A	White	PTSI-1		PTSI-2		1	1	1	1		3		
School B	All Students	LSI		LSI			2	2	2		2		
School B	ED	LSI		LSI			2	1	2		2		

Preliminary Determinations Excel File

28	29	30	31	32	33	34	35	36	37	38	39	40	41	42	43
Core Subject Performance							Graduation Rate						English Language Proficiency (ELP)		
ELA Index	Math Index	Science Index	Social Studies Index	Core Subject Perf. Index	Core Subject Perf. Level	Core Subject Perf. Level Range	4 Yr Grad. Rate (2020 4 Yr)	5 Yr Grad. Rate (2019 5 Yr)	6 Yr Grad. Rate (2018 6 Yr)	Unwtd. Avg. Grad. Rate	Grad. Rate Level	Grad. Rate Level Range	ELP Success Ratio	ELP Level	ELP Level Range
149.8	95.5	169.1	172.4	141.9			71.9	77.0	82.1	77.0					
75	137.5	183.3	212.5				50.0	100.0	0.0						

50	51	52
2021-22 Reference for CSI/ATSI Exit Criteria		
Weighted Avg. Ach. Index	Core Subject Perf. Index	Unwtd. Avg. Grad. Rate

2025–26 SY Preliminary Accountability Status Report Guide

Indicator Level Cut Points

Tables A-1 and A-2 provide the minimum and maximum ranges by level and subgroup for each elementary/middle and high school level indicator.

Table A-1. Elementary/Middle (EM) School Level

All Students										
Level	Weighted		Core		Student Growth		ELP		Attendance	
	Index		Index		Index		Success Ratio		Index	
	Min	Max	Min	Max	Min	Max	Min	Max	Min	Max
1	7.4	86.3	0	86.5	0	45.0	0	0.49	0	133.5
2	86.4	130.8	86.6	131.2	45.1	50.0	0.50	0.99	133.6	191
3	130.9	156.3	131.3	158.1	50.1	54.0	1.00	1.24	191.1	208
4	156.4	245.2	158.2	250	54.1	100	1.25+	--	208.1	250
Students with Disabilities										
Level	Weighted		Core		Student Growth		ELP		Attendance	
	Index		Index		Index		Success Ratio		Index	
	Min	Max	Min	Max	Min	Max	Min	Max	Min	Max
1	0	37.5	0	37	0	45.0	0	0.49	0	124.8
2	37.6	69.6	37.1	71.8	45.1	50.0	0.50	0.99	124.9	177.8
3	69.7	92.2	71.9	96.8	50.1	54.0	1.00	1.24	177.9	197.8
4	92.3	237.5	96.9	250	54.1	100	1.25+	--	197.9	250

Features

- Overview of New York State Accountability Support Models
- Detailed explanations of Identification and Exit Criteria
- Detailed description of Preliminary Accountability Determinations Excel file structure and contents
- Accountability Indicator Level Cut Points
- Links to additional resources

SIRS Reports

Data Refresh Date: Jun 24, 2025
 Attendance Through: Jun 14, 2025
 Last Attendance Date Loaded: Jun 13, 2025

[Report Documentation](#)

Student Subgroup (accountability subgroups are marked with an asterisk (*))	Elementary/Middle Level Attendance for Accountability (Grades 1-8 and Age Equivalent)						EM Enrolled 30 Days but Present 0 (g)
	Cohort (a)	Level 1 (b)	Level 2 (c)	Level 3 (d)	Level 4 (e)	Estimated Attendance Index (f) = 100 * (c+2d+2.5e)/a	
*All Students	208	44	26	66	72	162.5	0
Female	101	17	12	36	36	172.3	0
Male	104	27	14	27	36	151.9	0
Nonbinary	3	0	0	3	0	200	0
*Black	45	15	2	15	13	143.3	0
*Hispanic	31	8	2	6	10	141.9	0
*Asian/Pacific Islander	7	1	1	2	3	178.6	0
Asian	6	0	1	2	3	208.3	0
Native Hawaiian/Other Pacific Islander	1	1	0	0	0	0	0
*White	90	11	10	33	36	184.4	0
*Multiracial	35	9	6	10	10	145.7	0
General Education Students	146	20	20	54	52	176.7	0
*Students with Disabilities	62	24	6	12	20	129	0
Former Students with Disabilities	9	1	2	2	4	177.8	0
Not English Language Learner	194	40	23	63	68	164.4	0
*English Language Learner	14	4	3	3	4	135.7	0
Formerly English Language Learner	2	0	0	0	2	250	0
*Economically Disadvantaged	147	43	21	42	41	141.2	0
Not Economically Disadvantaged	61	1	5	24	31	213.9	0

Accountability Reports

Weighted Average Achievement/ Core Subject Performance (EM Level)	SIRS 106
Weighted Average Achievement/ Core Subject Performance (HS Level)	SIRS 114
Student Growth	SIRS 112
Graduation Rate	SIRS 105
ELP	SIRS 113
Attendance	SIRS 116
CCCR	SIRS 108

Putting It All Together



Support leaders in understanding data and resources available to them



Utilize cut points, MIPs, and LTGs as references for goal-setting



Identify and understand the “red flags” in your data



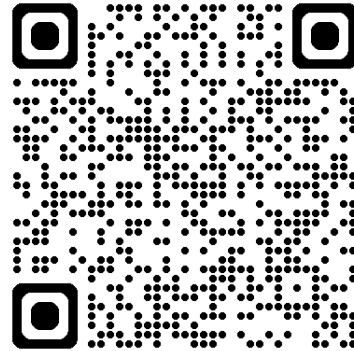
Use this information to develop actionable steps in improvement planning



Example 1

High School Level Data

Example 1: High School Data



[Scan the QR code above or click here to view the video for Example 1](#)

Example 1: High School Data



Next Steps:

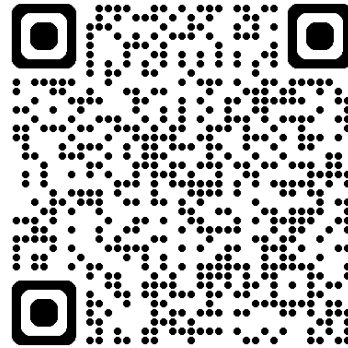
- Locate attendance trends
- Identify students with Level 1s and 2s for interventions
- Analyze programmatic needs affecting attendance
- Combine state attendance data with local data to address attendance needs



Example 2

Elementary/Middle Level Data

Example 2: Elementary Middle Data



[Scan the QR Code above or click here to view the video for Example 2](#)

Example 2: Elementary Middle Data



Next Steps:

- Even when identified for LSI, Level 1s and “borderline” Level 2s can be targets for improvement
- Within an accountability level, address student needs
- Consider programmatic analysis

New York State School Report Card

— What data would you like to see?

Accountability Data

Select all in content area ☐

Build
Report

Clear

Check
All

Data used to determine a school's or district's accountability status under the New York State ESSA Plan, a list of all NYS district and school statuses, amount of funds received by districts and schools under the Title I School Improvement Grant, and strategies implemented in these schools to demonstrate improvement.

For information about the New York State accountability system, see [Understanding the New York State Accountability System under the Every Student Succeeds Act \(ESSA\) for 2024-25 Accountability Statuses Based on 2023-24 Results](#).

- ☐ NYS District and School Accountability Statuses
- ☐ Section 1003 School Improvement Funds
- ☐ NYS Measures of Interim Progress and Long-Term Goals

Elementary/Middle-Level Indicators

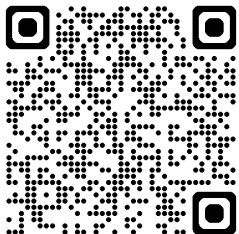
Secondary-Level Indicators

- ☐ Core Subject Performance
- ☐ Weighted Average Performance
- ☐ English Language Proficiency
- ☐ Chronic Absenteeism
- ☐ Participation Rate

- ☐ Core Subject Performance
- ☐ Weighted Average Performance
- ☐ Graduation Rate (as of August of the previous reporting year)
- ☐ English Language Proficiency
- ☐ Chronic Absenteeism
- ☐ Participation Rate

Changes for 2025–2026 SY SRC

- Student Growth, CCCR, and Attendance indicator data will be available.
- No district-level subgroup accountability data or statuses will be displayed.
- Statewide MIPs and LTGs will be included.
- Chronic Absenteeism data will be displayed, but in a different section of the SRC.



<https://data.nysed.gov/>

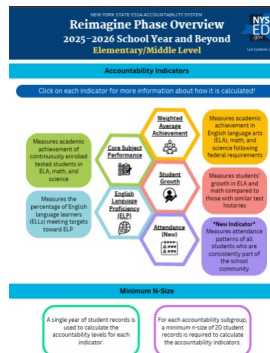
Office of Accountability: Policy, Analytics, and Research Update



Reimagine Phase Accountability System Resources

<https://www.nysed.gov/accountability/school-and-district-accountability-resources-and-data>

- Fact Sheets
- Webinars
- Technical Assistance Documents
 - Q and A
 - Core Subject Performance and Attendance Indicator Cut Points
 - MIPs and LTGs
- SIRS Reports and Links



NYS ED New York State
EDUCATION DEPARTMENT
Knowledge > Skill > Opportunity

**Every Student Succeeds Act (ESSA)
Accountability System**

**Reimagine Phase Webinars:
Identification and Exit Criteria**

2025-26 School Year (SY) Based on 2024-25 SY Results and Beyond

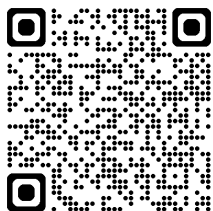
Understanding the New York State
Accountability System under the Every
Student Succeeds Act (ESSA) for 2025–
2026 Accountability Statuses Based on
2024–2025 Results



New York State Education Department
Office of Accountability
September 2025

Additional NYSED Resources

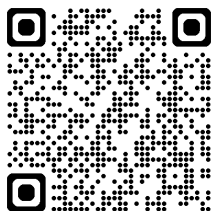
Office of Accountability website



<https://www.nysed.gov/accountability/>

- Recent News, full ESSA Plan, additional resources, and program office contact information

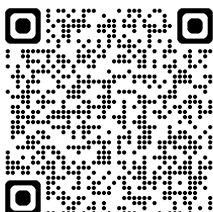
Continuous Improvement webpage



<https://www.nysed.gov/accountability/continuous-improvement>

- Additional resources and supports for identified schools and districts

Student Information Repository System Guidance website



<https://www.nysed.gov/information-reporting-services/student-information-repository-system-sirs-guidance>

- SIRS Manual, NYSED Data Elements, and additional technical guidance



Thank You!

Email us:
accountinfo@nysed.gov