



INDICATOR INFO SESSION 5: ENGLISH LANGUAGE PROFICIENCY

New York State Education Department (NYSED)
Wednesday, February 1, 2023

Welcome

Indicator Info Session 5: English Language Proficiency



Overview

The purpose of these sessions is to provide information about how accountability determinations were calculated using 2021-22 school year results.

- United States Department of Education (USDE) approved 1-year ESSA Accountability State Plan Addendum
- PDF version and recording available on:

<http://www.nysed.gov/accountability/school-and-district-accountability>

All mics have been muted and videos have been turned off

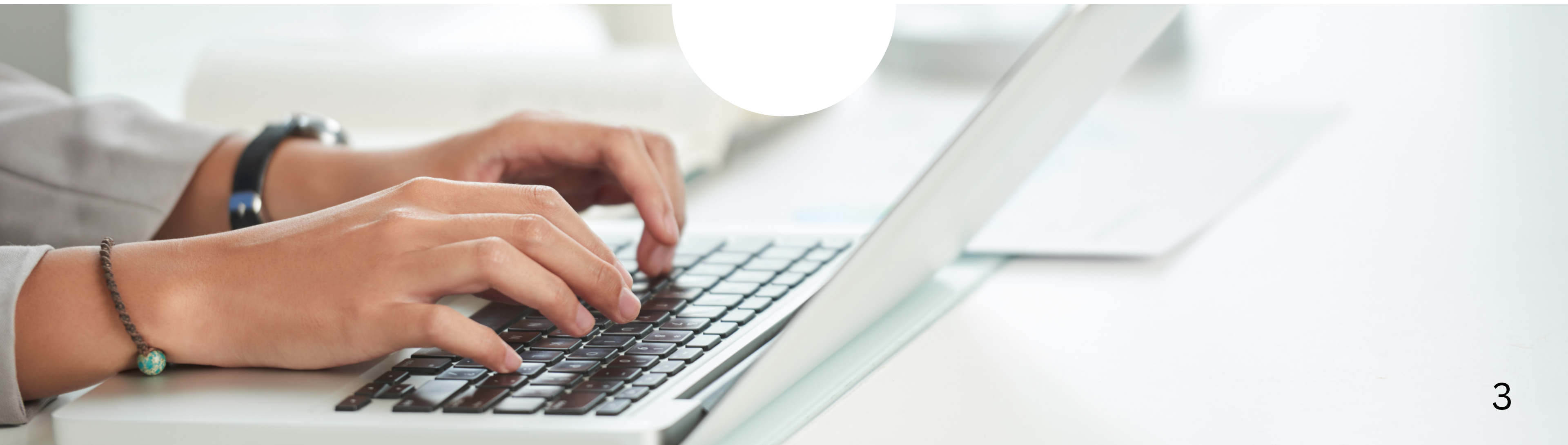


QUESTIONS?
Please submit your questions in the chat box. Include:
name, title, district



Questions and Answers

Questions can be submitted through the chat function.
All further questions after this session can be submitted to accountinfo@nysed.gov.





English Language Proficiency

How is this indicator calculated at the Elementary/Middle and High School Levels?

One



Preliminary Determinations

How are accountability indicators used to determine supports for the 2022-23 school year?

Two



English Language Proficiency

Entering

Emerging

Transitioning

Expanding

Can exit at this level
(3 or 4 on Grades 3-8 ELA assessment
or 65 or above on Regents ELA)

Commanding

Can exit at this level



English Language Proficiency

Benchmark

Expected students to make Sufficient Progress on NYSESLAT

Progress Rate

Actual students demonstrating Sufficient Progress

Success Ratio

Determined by dividing the Progress Rate by the Benchmark

1

English Language Proficiency



2

English Language Proficiency

Benchmark =

$$\frac{\text{sum of individual ELL probabilities of demonstrating Sufficient Progress}}{\text{\# of enrolled ELLs}}$$

Progress Rate =

$$\frac{\text{weighted \# of ELLs to demonstrate making Sufficient Progress}}{\text{\# of enrolled ELLs}}$$

3

English Language Proficiency

ELP Level Assignment

$$\text{Success Ratio} = \frac{\text{Progress Rate}}{\text{Benchmark}}$$

Success Ratio	Level
Less than 0.5	1
0.5 to .99	2
1 to 1.24	3
Greater than or equal to 1.25	4

3

English Language Proficiency

Example of Student Data

Student	Individual Probability of Making Progress	Made Progress?	Years Identified as ELL
K	0.2	N	2
L	0.8	Y	3
M	0.5	Y	4

Example of Calculations

	Formula	Calculation Using Example
Benchmark	(Sum of Individual Probabilities) ÷ # of Enrolled ELLs	$(0.2+0.8+0.5) \div 3 = 0.5 = 50\%$
Progress Rate	(Sum of Students who Made Progress) ÷ # of Enrolled ELLs	$2 \div 3 = 0.67 = 67\%$
Success Ratio	Progress Rate ÷ Benchmark	$0.67 \div 0.5 = 1.34$



Preliminary Determinations

Elementary/Middle School CSI Identification Scenarios

Scenarios	Weighted	Core	English Language Proficiency	Chronic Absenteeism
1	Both Level 1		Any Level (None, 1-4)	
2	Level 2	Level 1	Both Not Level 3 or 4	
3	Level 1	None	Both Not Level 3 or 4	
4	Level 1	Level 2	Both Not Level 3 or 4	
5	Level 3	Level 1	Both Not Level 3 or 4	
6	Level 1	Level 3	Both Not Level 3 or 4	

High School CSI Identification Scenarios

Scenarios	Weighted	Core	Grad Rate	English Language Proficiency	Chronic Absenteeism
1	Both Level 1		Level 1	Any Level (None, 1-4)	
2	Level 2	Level 1	Level 1	Both Not Level 3 or 4	
3	Level 1	None	Level 1	Both Not Level 3 or 4	
4	Level 1	Level 2	Level 1	Both Not Level 3 or 4	
5	Both Level 1		Level 2	Both Not Level 3 or 4	
6	Level 1	Level 2	Level 2	Both Not Level 3 or 4	
7	Level 2	Level 1	Level 2	Both Not Level 3 or 4	

Further Resources

<http://www.nysed.gov/accountability/school-and-district-accountability>

<https://www.p12.nysed.gov/irs/>



Webinar:

Preparing for the Every Student Succeeds Act (ESSA) Accountability System Restart for the 2022-23 School Year



Document:

Understanding the New York State Accountability System under the Every Student Succeeds Act (ESSA) for 2022-2023 Accountability Statuses Based on 2021-2022 Results



Data Reports:

Schools and districts can view data submitted via the Student Information Repository System (SIRS) used for making accountability determinations

Questions and Answers

Questions can be submitted through the chat function.

Please include your name, work title if applicable, and district represented in your question.

All further questions after this session can be submitted to accountinfo@nysed.gov.



THANK YOU

—
accountinfo@nysed.gov

THIS IS THE FINAL INFO SESSION

All recordings/slides posted:

www.nysed.gov/accountability/school-and-district-accountability

