



Coaches' Connection

Focus: Using Assessments to Drive Instruction

What is Data-Informed Instruction?

Data-informed instruction is a process of collecting and analyzing data from one or multiple sources to inform teachers on “the next steps(s)”.

Assessment...

- Drives instruction
- Can be quick
- Can be formal or informal
- Can be pre-planned or on-the-spot
- Occurs consistently as a unit begins, throughout the unit and as the unit ends
- Can occur prior to, during, and after instruction
- Can include student readiness, interest and learning profiles, growth toward established benchmarks, etc.
- Can help students chart and contribute to their own growth
- MAY be differentiated

Assessment is not...

- Paper and pencil tests given regularly
- Punishment
- Disconnected from the units/lessons
- About getting a numeric grade every time

What can be assessed?

READINESS

- Skills
- Content Knowledge
- Concepts



INTEREST

- Interest Surveys
- Interest Centers
- Self Selection



LEARNING PROFILES

- Areas of Strength and Weaknesses
- Work Preferences
- Self Awareness



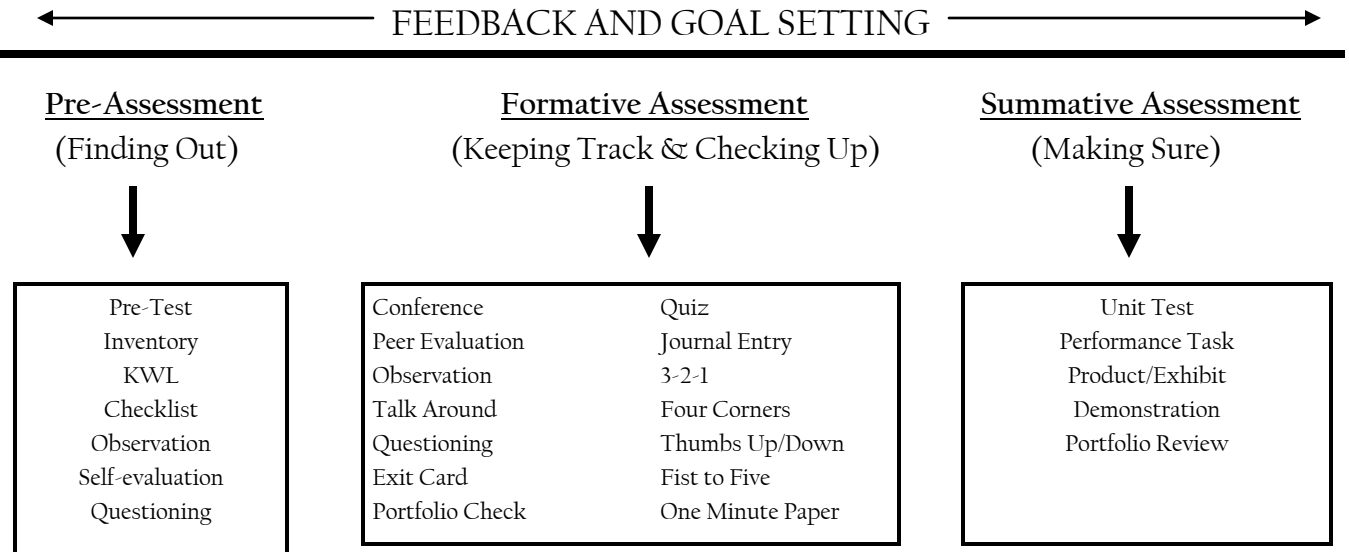
Pre-Assessment...

- ⇒ Provides data to determine options for students
- ⇒ Helps determine differences before planning
- ⇒ Helps teachers design activities that are respectful and challenging
- ⇒ Allows teachers to meet students where they are
- ⇒ Identifies a starting point for instruction
- ⇒ Identifies gaps in learning
- ⇒ Makes efficient use of instructional time

Three Questions that Help....

1. What do I know about my students now?
2. What is the nature and content of the final assessment for this unit or period of time?
3. What don't I know about the content knowledge, the critical thinking, and the process or skill demonstration of my students?

The Assessment Continuum



Click here for a list of formative assessments and explanations: http://www.aft.org/pdfs/teachers/teach11materials/t11_providingh3.pdf

Keeping Track of Data...How do I do it?

Clipboard & student roster(s)

This is great for keeping track of informal formative assessment data like observation, class discussions, or questioning and other quick checks for understanding such as exit or entrance cards, four corners, 3-2-1 summarizer, etc.

Sticky notes & a seating chart

Keep notes on each student right at their seat (on the seating chart!). Sticky notes can be transferred to student data folders or other more formal tracking system.

Student Data Folders

Use individual student folders to keep track of student progress.

Visit the link: [http://quality.cr.k12.ia.us/Tutorials/data folders/data folder index.html](http://quality.cr.k12.ia.us/Tutorials/data%20folders/data%20folder%20index.html)

Keeping Track of Data...How do I do it? (continued)

Classroom Data Centers

Visually display class goals and achievement to keep students informed of progress. **Do not post individual student data!!** This is for posting class goals and achievement, e.g., whole class reading fluency rate, reading level, overall assessment achievement, achievement on a particular learning target or standard, etc. A great video showing Data Center use at all grade levels: <http://vimeo.com/63678224>

Planbook

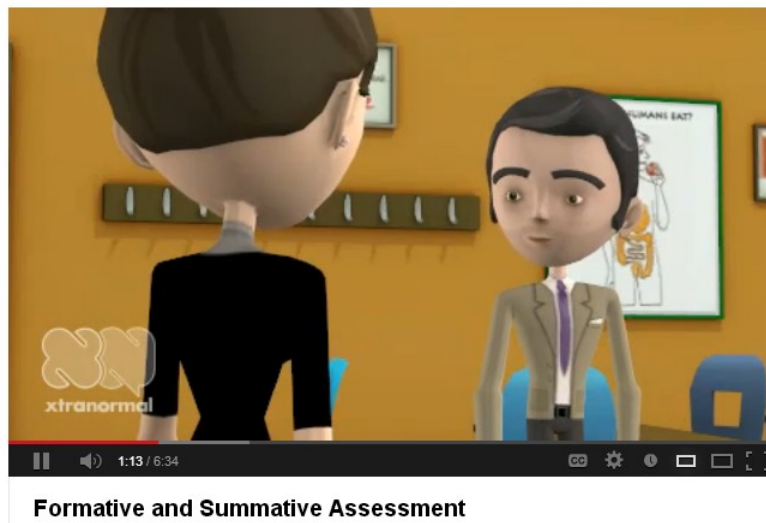
Use your planbook to keep track of daily or weekly data.

Data Binder

Use a data binder to collect assessment data, grouping information, and even individual student information.

Excel Spreadsheet

Spreadsheets can be used to keep track of data, analyze trends, and identify gaps.



A great video explaining formative and summative assessment.

<http://www.youtube.com/watch?v=u0nSW3W4MW0>

Data Analysis Using Excel

	1	2	3	4	5	6	7	8	9	10	11	12	13	14	15	16	17	18	19	20	21
1		1	2	3	4	5	6	7	8	9	10	11	12	13	14	15					
2	Abby	1	0	1	1	0	1	1	1	0	1	1	0	1	1	1					
3	Betty	0	1	1	1	0	1	1	1	0	1	1	1	1	0	1			AVG		75%
4	Carl	0	1	1	0	1	1	1	1	0	1	1	1	1	1	0					
5	Dan	1	1	1	1	1	1	1	0	1	1	0	0	0	1	1					
6	Ernie	1	0	1	1	0	1	1	0	0	1	1	1	0	1	0					
7	Frank	1	1	1	1	1	1	1	1	1	1	1	1	1	1	1					
8	Greg	1	1	0	1	1	0	1	0	1	0	1	1	0	1	0					
9	Hank	1	0	1	1	0	1	1	0	1	1	0	0	0	0	0					
10	Irene	1	1	0	1	1	1	1	1	1	1	1	1	1	1	1					
11	Jake	0	1	1	1	1	1	1	1	1	1	1	1	1	1	1					
12	Kristen	0	1	1	1	1	0	1	1	1	1	1	1	1	1	1					
13	Larry	1	1	1	0	1	1	0	1	1	0	0	0	1	1	0					
14	Mary	1	1	1	1	1	1	1	1	1	1	1	0	1	1	0					
15	Nancy	1	1	1	1	1	1	0	1	1	0	1	1	0	1	1					
16	Omthal	1	1	0	1	1	1	0	1	1	1	1	1	1	1	1					
17	Peggy	1	1	1	1	1	1	0	1	0	1	1	1	1	1	1					
18		75%	81%	81%	88%	75%	88%	75%	75%	69%	81%	81%	69%	63%	94%	25%					

CHECK THIS VIDEO OUT!!

Simple Data Analysis for Teachers Using Excel

<http://www.youtube.com/watch?v=WoEdTQxiV30>

Step by step directions on how to input student grades and then easily turn those grades into a gap analysis in seconds.

	1	2	3	4	5	6	7	8	9	10	11	12	13	14	15	16	17	18	19	20	21
1		1	2	3	4	5	6	7	8	9	10	11	12	13	14	15					
2	Abby	1	0	1	1	0	1	1	1	0	1	1	0	1	1	1					
3	Betty	0	1	1	1	0	1	1	1	0	1	1	1	1	0	1					
4	Carl	0	1	1	0	1	1	1	1	0	1	1	1	1	1	0					
5	Dan	1	1	1	1	1	1	1	0	1	1	0	0	0	1	0					
6	Ernie	1	0	1	1	0	1	1	0	0	1	1	1	0	1	0					
7	Frank	1	1	1	1	1	1	1	1	1	1	1	1	1	1	1					
8	Greg	1	1	0	1	1	0	1	0	1	1	0	1	0	1	0					
9	Hank	1	0	1	1	0	1	1	0	1	1	0	0	0	0	0					
10	Irene	1	1	0	1	1	1	1	1	1	1	1	1	1	1	1					
11	Jake	0	1	1	1	1	1	1	1	1	1	1	1	1	1	1					
12	Kristen	0	1	1	1	1	0	1	1	1	1	1	1	1	1	1					
13	Larry	1	1	1	0	1	1	0	1	1	0	0	0	1	1	0					
14	Mary	1	1	1	1	1	1	1	1	1	1	1	0	1	1	0					
15	Nancy	1	1	1	1	1	1	0	1	1	0	1	1	0	1	1					
16	Omthal	1	1	0	1	1	1	0	1	1	1	1	1	1	1	1					
17	Peggy	1	1	1	1	1	1	1	0	1	0	1	1	1	1	1					
18		75%	81%	81%	88%	75%	88%	75%	75%	69%	81%	81%	69%	63%	94%	25%					

Data Analysis for Teachers Using Excel (Part 2)

<http://www.youtube.com/watch?v=kUx6PGiE1nw&list=UU8kcl3a75YnNdrelCCePfqg&index=8>

Please email us your ideas/requests for next season's Coaches' Connection.

Created and submitted by CS Instructional Coaches:
Kristen Foland: kfoland@cssd.org
Freya Mercer: fmercer@cssd.org
Mark Trabucco: mtrabucco@cssd.org